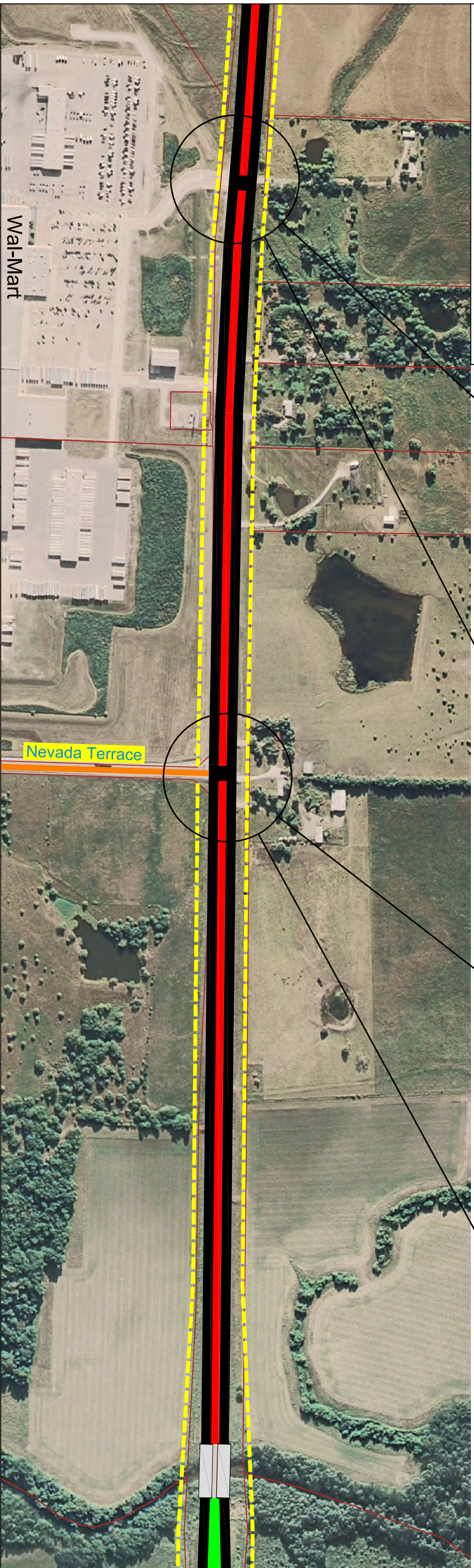
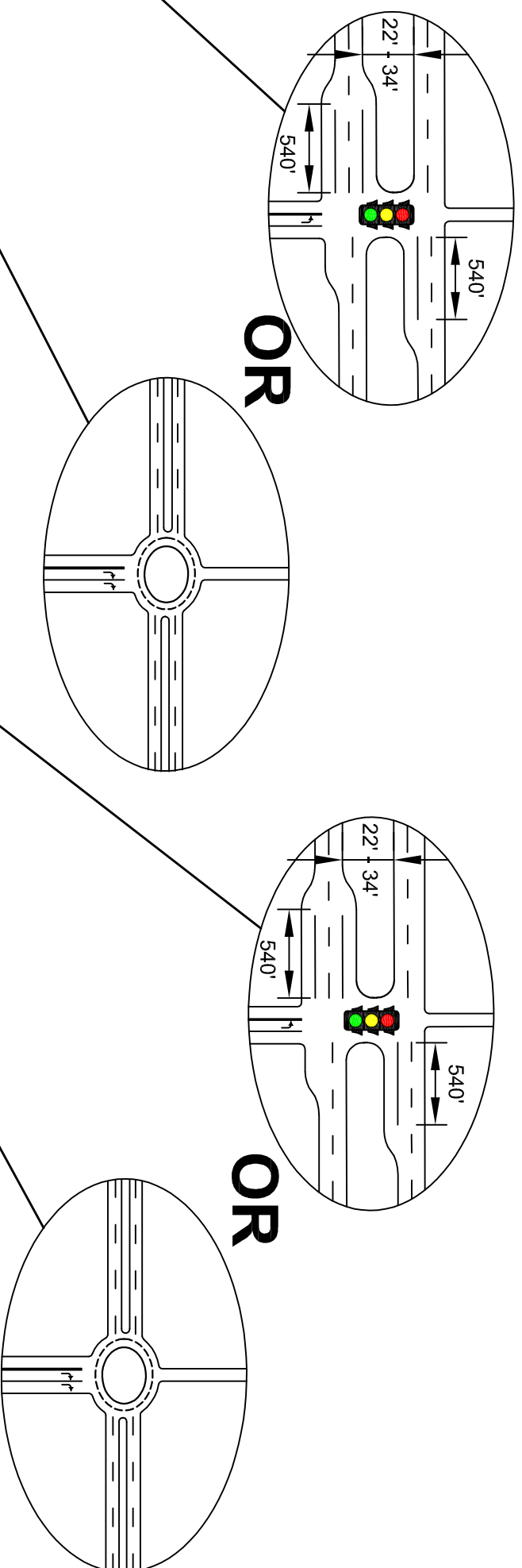


RECOMMENDED IMPROVEMENTS

- At Wal-Mart Distribution Center (main drive) intersection
- Add EB right turn land and EB and WB left turn lane to remove turning vehicles from through traffic
 - Alternative 1. Add traffic signal when warranted to improve intersection operation
 - Alternative 2. Construct roundabout to improve intersection operation
- Nevada Terrace intersection
- Add EB right turn land and EB and WB left turn lane to remove turning vehicles from through traffic
 - Alternative 1. Add traffic signal when warranted to improve intersection operation
 - Alternative 2. Construct roundabout to improve intersection operation



400'

0'

400'

<p>LEGEND</p> <ul style="list-style-type: none"> Proposed ROW Existing Parcel Line Bridge Rural Expressway (4 Lane w/ Depressed Median) Urban Expressway (4 Lane w/ Raised Median) Urban Arterial (5 Lane TWT) Urban Arterial (5 Lane w/ Raised Median) 2 - Lane Highway with Improved Shoulders 	<ul style="list-style-type: none"> Existing Arterial Proposed Arterial Existing Collector Proposed Collector
--	--

Disclaimer: These concepts are current as of August 2009 and depict KDOT's recommended improvements for K-68 from I-35 to the State Line. The exact location, design, and right-of-way for the corridor cannot be determined from these concepts and could be different from that shown. Additional preliminary design will need to be performed to further refine these improvements and the right-of-way requirements.

K-68 CORRIDOR STUDY

PLATE 2 OF 32

AERIAL DATE: 2007

October - 09