

STORM LEGEND	
—	N/A
—	ACCEPTABLE
—	MARGINAL
—	INADEQUATE



US-24 Corridor Study



Completed by HWS, in association with: George Butler & Associates, Gould Evans, Richard Caplan & Associates and Stinson Morrison Hecker.



STORM LEGEND

- N/A
- ACCEPTABLE
- MARGINAL
- INADEQUATE



US-24 Corridor Study



Completed by HWS, in association with: George Butler & Associates, Gould Evans, Richard Caplan & Associates and Stinson Morrison Hecker.



STORM LEGEND	
—	N/A
—	ACCEPTABLE
—	MARGINAL
—	INADEQUATE



US-24

Corridor Study

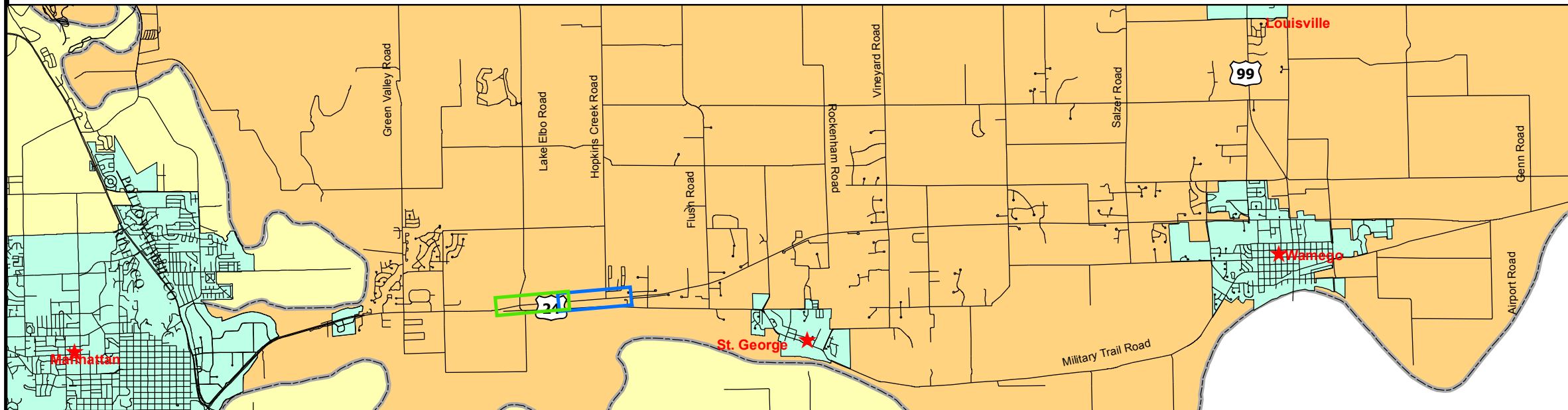


Completed by HWS, in association with: George Butler & Associates, Gould Evans, Richard Caplan & Associates and Stinson Morrison Hecker.



STORM LEGEND

- N/A
- ACCEPTABLE
- MARGINAL
- INADEQUATE



US-24
Corridor Management Plan

HWS **GouldEvans** **RCA** **GBA** **STINSON MORRISON HECKER**

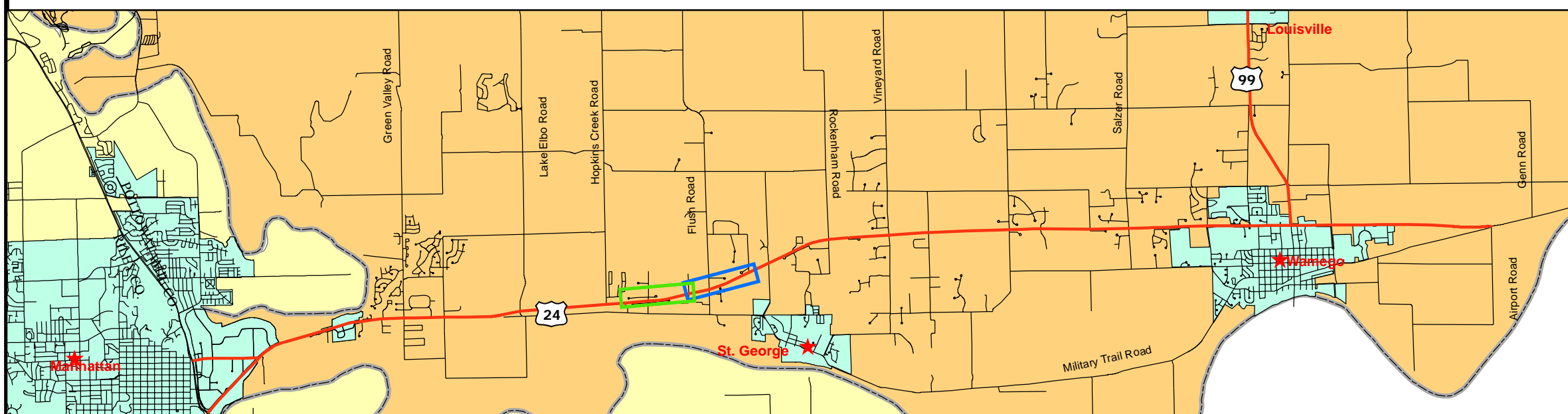
Completed by HWS, in association with: George Butler & Associates, Gould Evans, Richard Caplan & Associates and Stinson Morrison Hecker.

STORM SEWER
SHEET 4 OF 13



STORM LEGEND

- N/A
- ACCEPTABLE
- MARGINAL
- INADEQUATE



US-24 Corridor Study



Completed by HWS, in association with: George Butler & Associates, Gould Evans, Richard Caplan & Associates and Stinson Morrison Hecker.



STORM LEGEND	
—	N/A
—	ACCEPTABLE
—	MARGINAL
—	INADEQUATE

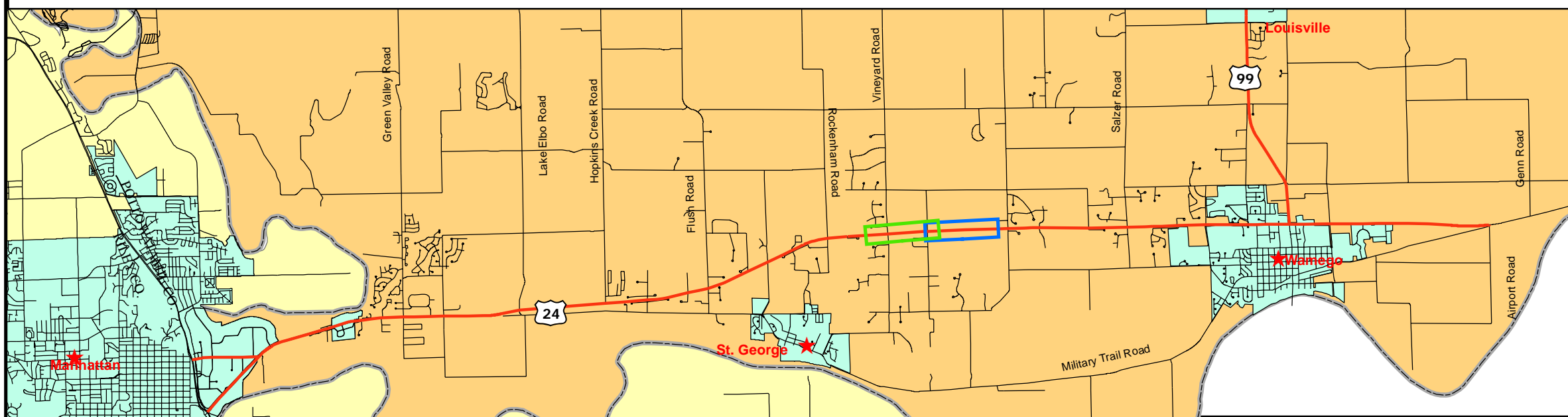


Completed by HWS, in association with: George Butler & Associates, Gould Evans, Richard Caplan & Associates and Stinson Morrison Hecker.



STORM LEGEND

- N/A
- ACCEPTABLE
- MARGINAL
- INADEQUATE



US-24 Corridor Study



Completed by HWS, in association with: George Butler & Associates, Gould Evans, Richard Caplan & Associates and Stinson Morrison Hecker.



STORM LEGEND

- N/A
- ACCEPTABLE
- MARGINAL
- INADEQUATE



US-24 Corridor Study

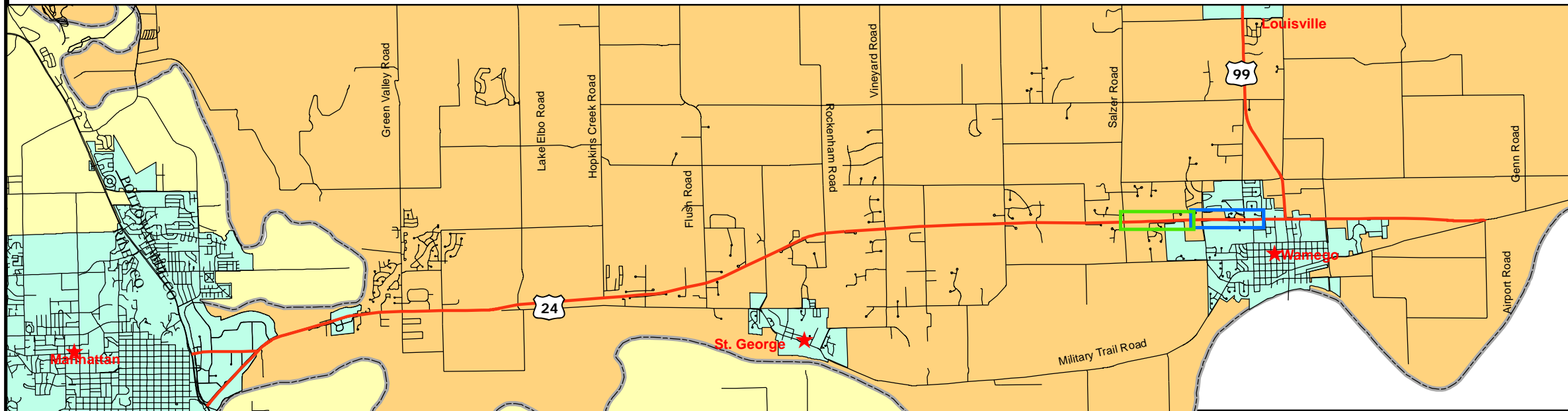


Completed by HWS, in association with: George Butler & Associates, Gould Evans, Richard Caplan & Associates and Stinson Morrison Hecker.



STORM LEGEND

- N/A
- ACCEPTABLE
- MARGINAL
- INADEQUATE



US-24 Corridor Study



Completed by HWS, in association with: George Butler & Associates, Gould Evans, Richard Caplan & Associates and Stinson Morrison Hecker.



STORM LEGEND

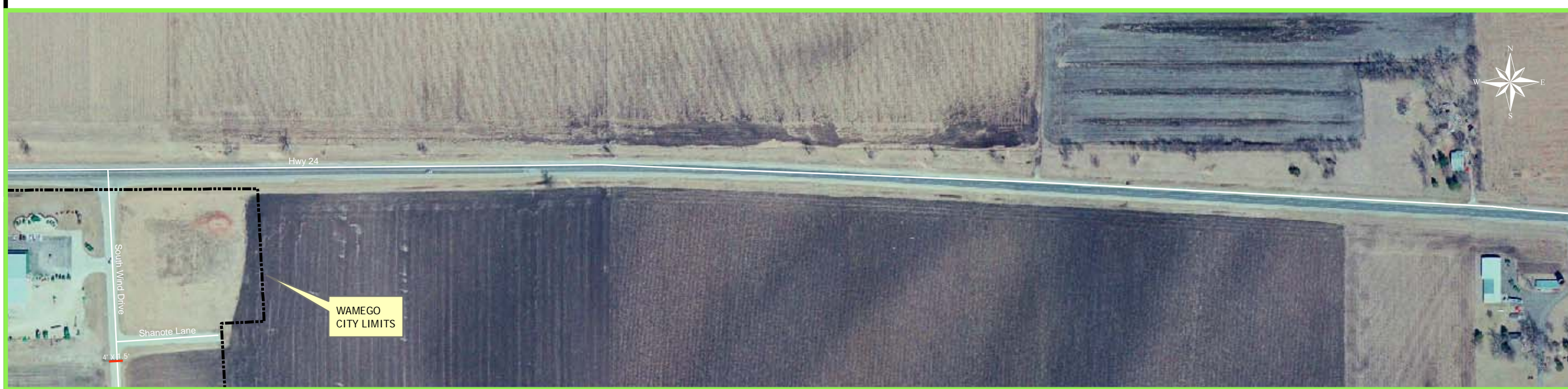
- N/A
- ACCEPTABLE
- MARGINAL
- INADEQUATE



US-24
Corridor Study



Completed by HWS, in association with: George Butler & Associates, Gould Evans, Richard Caplan & Associates and Stinson Morrison Hecker.



STORM LEGEND

- N/A
- ACCEPTABLE
- MARGINAL
- INADEQUATE



US-24

Corridor Study

Completed by HWS, in association with: George Butler & Associates, Gould Evans, Richard Caplan & Associates and Stinson Morrison Hecker.



STORM LEGEND

- N/A
- ACCEPTABLE
- MARGINAL
- INADEQUATE



US-24 Corridor Study



Completed by HWS, in association with: George Butler & Associates, Gould Evans, Richard Caplan & Associates and Stinson Morrison Hecker.



STORM LEGEND	
—	N/A
—	ACCEPTABLE
—	MARGINAL
—	INADEQUATE



Completed by HWS, in association with: George Butler & Associates, Gould Evans, Richard Caplan & Associates and Stinson Morrison Hecker.