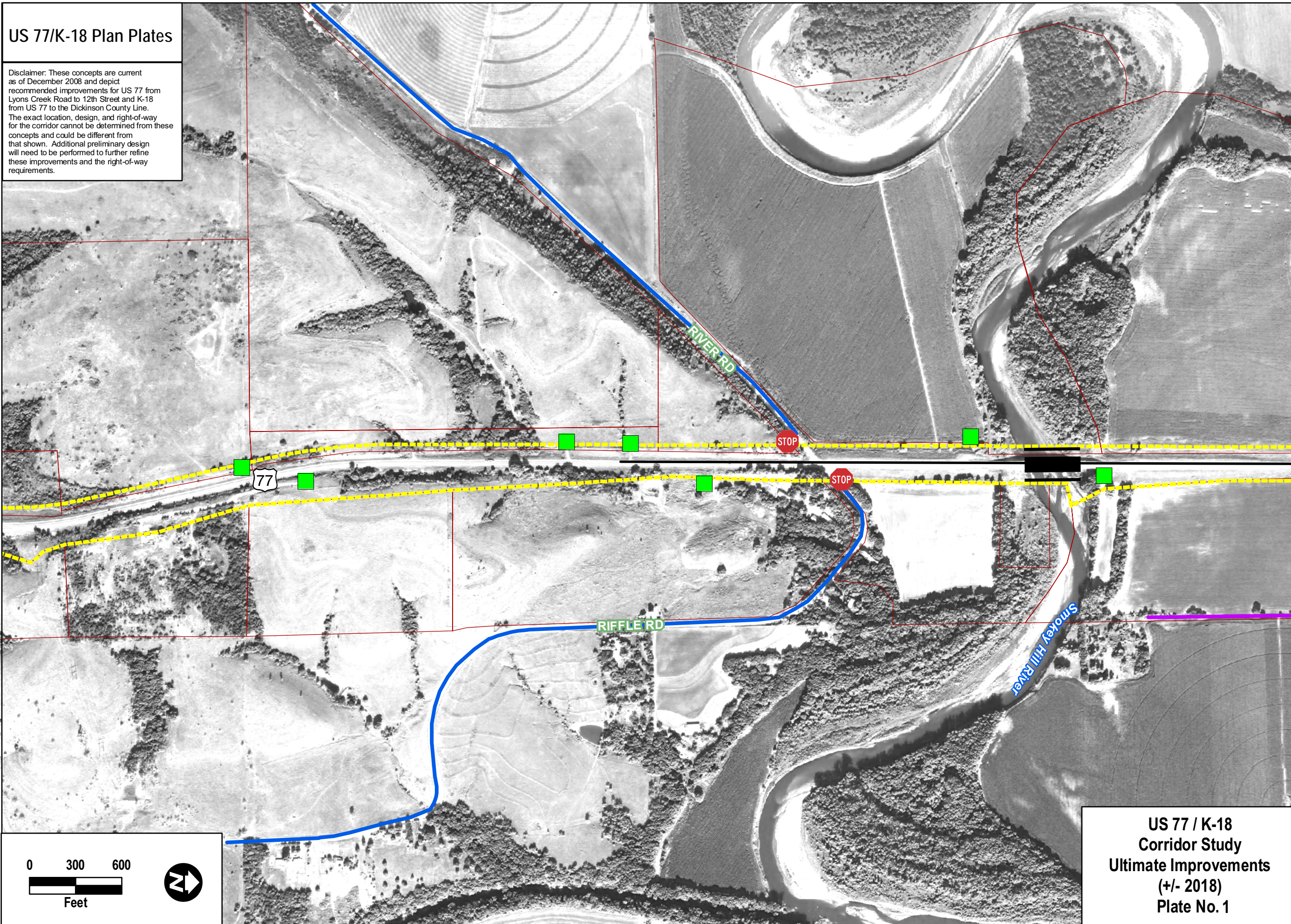
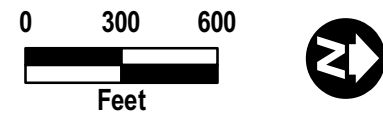


US 77/K-18 Plan Plates

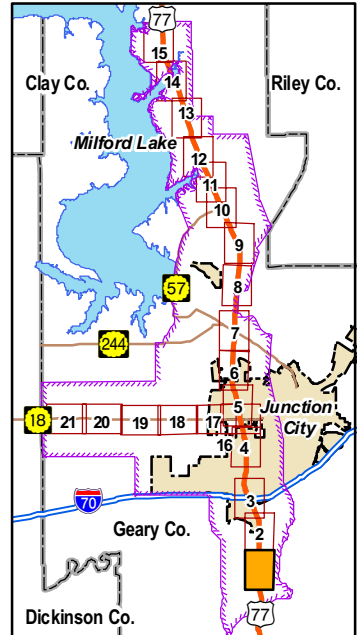
Disclaimer: These concepts are current as of December 2008 and depict recommended improvements for US 77 from Lyons Creek Road to 12th Street and K-18 from US 77 to the Dickinson County Line. The exact location, design, and right-of-way for the corridor cannot be determined from these concepts and could be different from that shown. Additional preliminary design will need to be performed to further refine these improvements and the right-of-way requirements.



- US-77/K-18 Mainline**
 - 4 Lane Section
 - 2 - 3 Lane Section
 - Pedestrian Connection
 - Future Access Removal
 - Opportunity Access Removal (Grandfathered Access)
 - Pavement Removal
 - Bridge
 - Proposed Right of Way
- Parallel Road Network**
 - Arterial
 - Collector
 - Local Road
 - New Roadway (All Types)
- Parcel Boundaries
- Corps of Engineers Limits
- City Limits

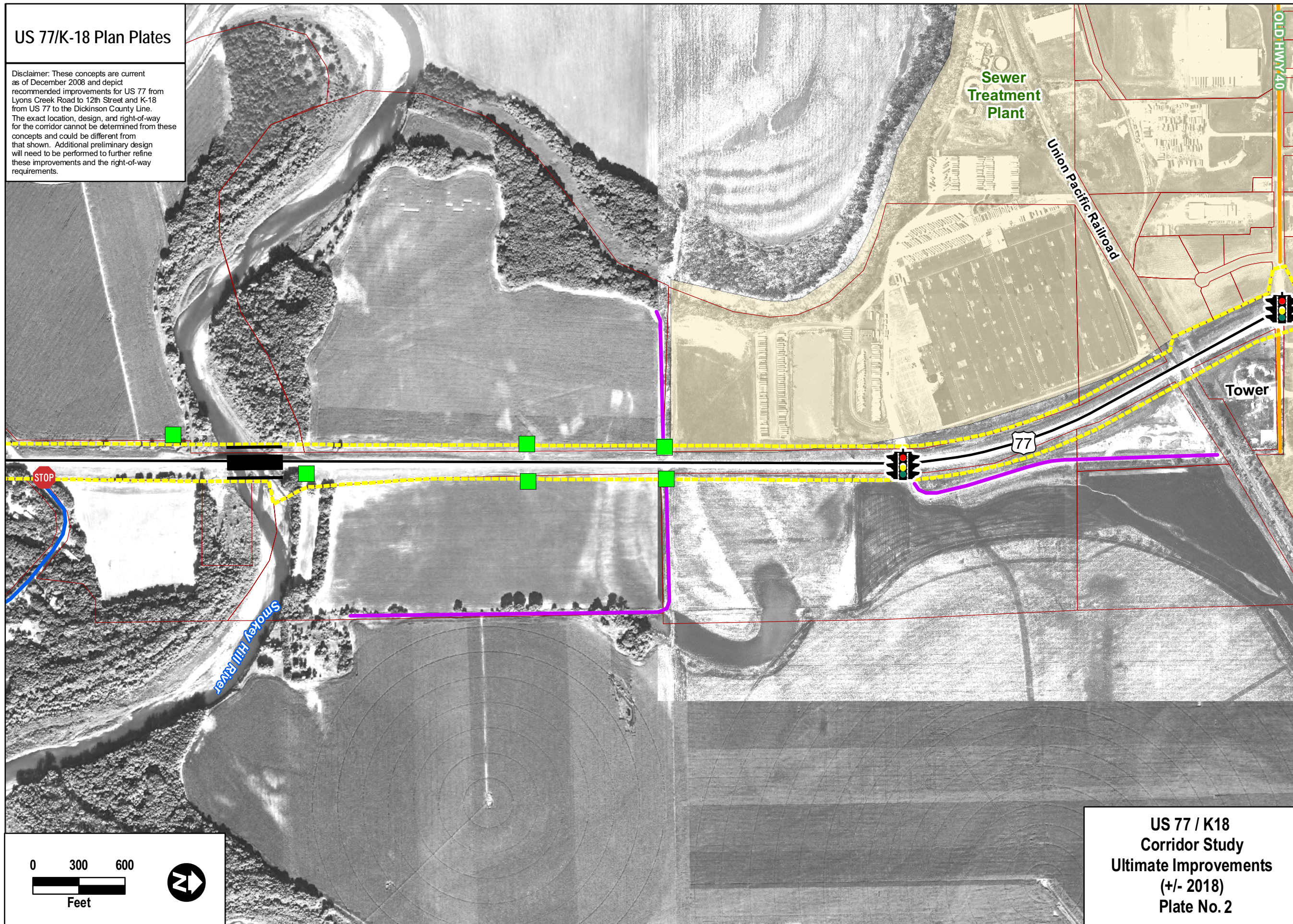


**US 77 / K-18
Corridor Study
Ultimate Improvements
(+/- 2018)
Plate No. 1**



US 77/K-18 Plan Plates

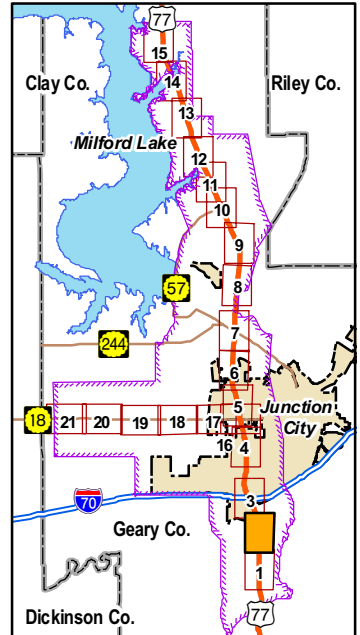
Disclaimer: These concepts are current as of December 2008 and depict recommended improvements for US 77 from Lyons Creek Road to 12th Street and K-18 from US 77 to the Dickinson County Line. The exact location, design, and right-of-way for the corridor cannot be determined from these concepts and could be different from that shown. Additional preliminary design will need to be performed to further refine these improvements and the right-of-way requirements.



- US-77/K-18 Mainline**
 - 4 Lane Section
 - 2 - 3 Lane Section
 - Pedestrian Crossing
 - Future Access Removal
 - Opportunity Access Removal (Grandfathered Access)
 - Pavement Removal
 - Bridge
 - Proposed Right of Way
- Parallel Road Network**
 - Arterial
 - Collector
 - Local Road
 - New Roadway (All Types)
- Parcel Boundaries
- Corps of Engineers Limits
- City Limits

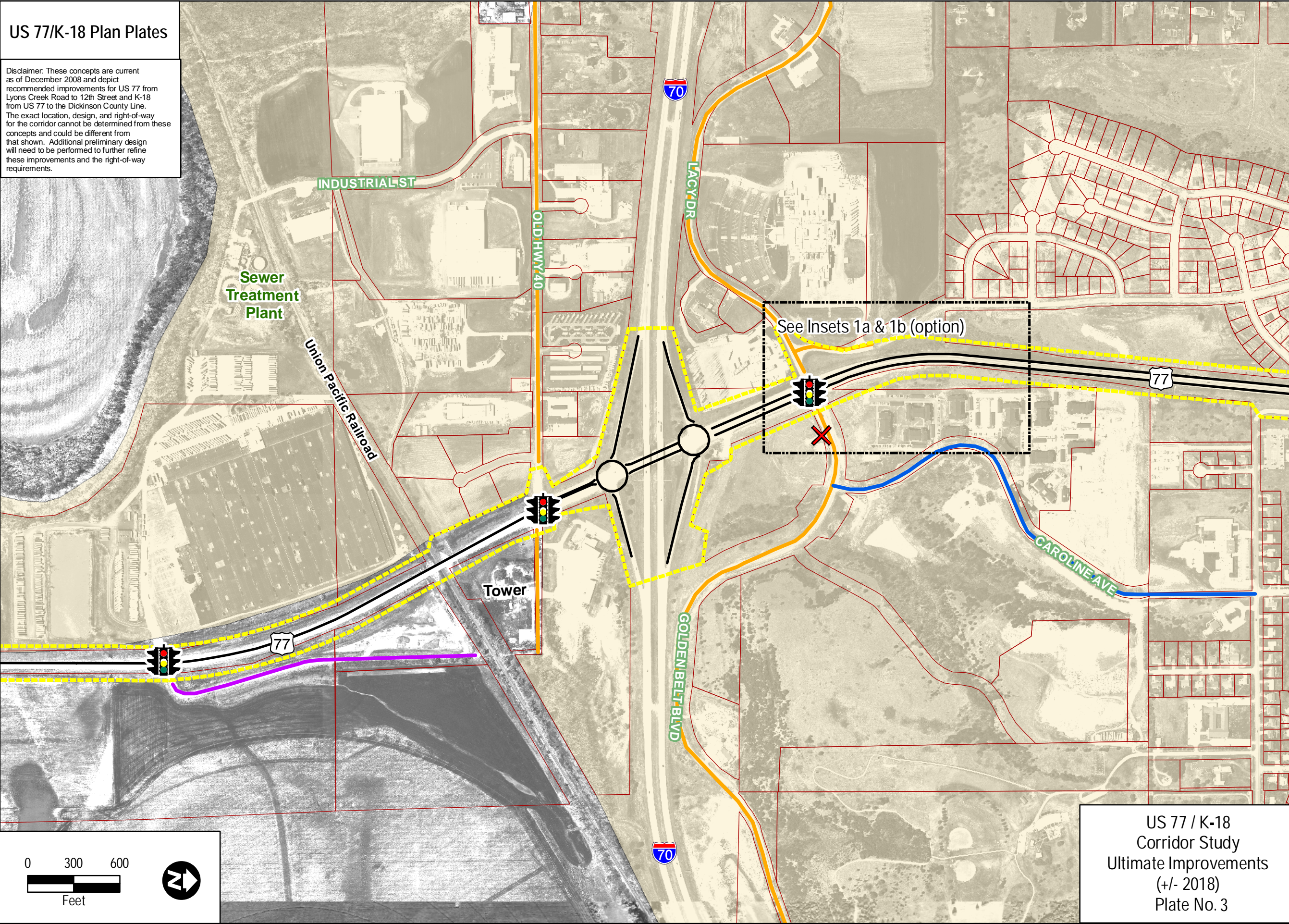


**US 77 / K18
Corridor Study
Ultimate Improvements
(+/- 2018)
Plate No. 2**

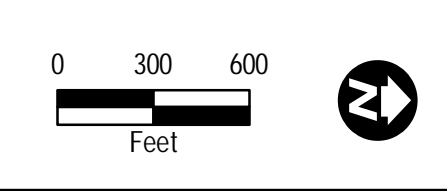


US 77/K-18 Plan Plates

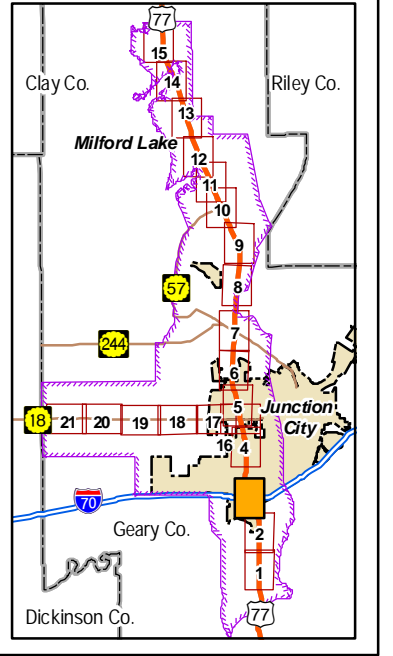
Disclaimer: These concepts are current as of December 2008 and depict recommended improvements for US 77 from Lyons Creek Road to 12th Street and K-18 from US 77 to the Dickinson County Line. The exact location, design, and right-of-way for the corridor cannot be determined from these concepts and could be different from that shown. Additional preliminary design will need to be performed to further refine these improvements and the right-of-way requirements.



- US-77/K-18 Mainline**
- 4 Lane Section
 - 2 - 3 Lane Section
 - Pedestrian Crossing
 - Future Access Removal
 - Opportunity Access Removal (Grandfathered Access)
 - Pavement Removal
 - Bridge
 - Proposed Right of Way
- Parallel Road Network**
- Arterial
 - Collector
 - Local Road
 - New Roadway (All Types)
- Other Symbols**
- Parcel Boundaries
 - Corps of Engineers Limits
 - City Limits



US 77 / K-18
Corridor Study
Ultimate Improvements
(+/- 2018)
Plate No. 3



US 77/K-18 Plan Plates

Disclaimer: These concepts are current as of December 2008 and depict recommended improvements for US 77 from Lyons Creek Road to 12th Street and K-18 from US 77 to the Dickinson County Line. The exact location, design, and right-of-way for the corridor cannot be determined from these concepts and could be different from that shown. Additional preliminary design will need to be performed to further refine these improvements and the right-of-way requirements.

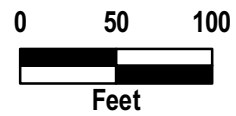


US-77/K-18 Mainline

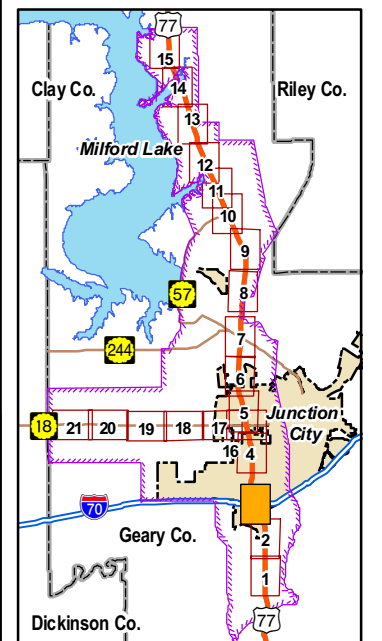
- 4 Lane Section
- 2 - 3 Lane Section
- Pedestrian Connection
- Future Access Removal
- Pavement Removal
- Bridge

Parallel Road Network

- Arterial
- Collector
- Local Road
- New Roadway (All Types)
- Parcel Boundaries
- Corp of Engineers Limits
- City Limits

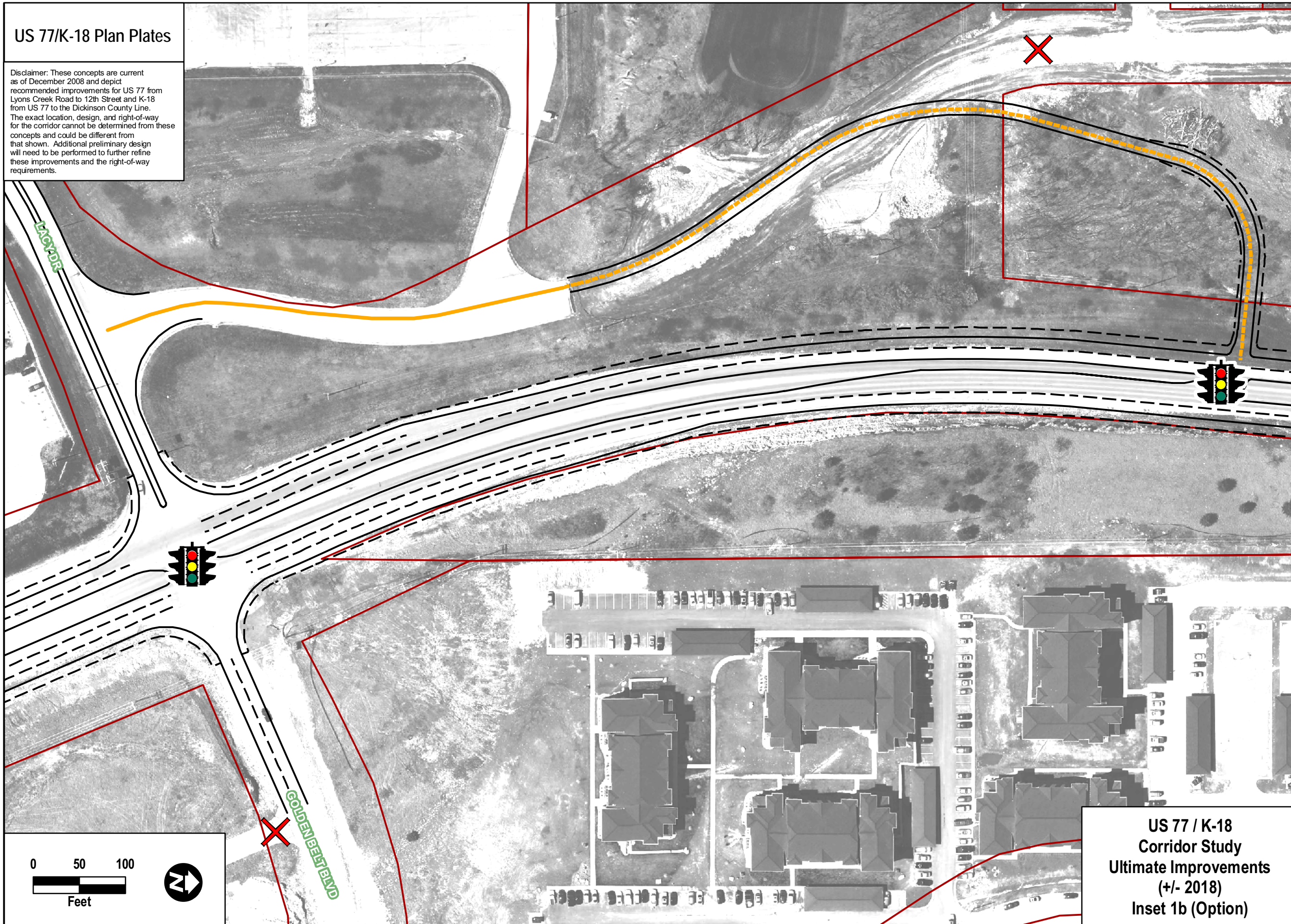


**US 77 / K-18
Corridor Study
Ultimate Improvements
(+/- 2018)
Inset 1a (Preferred)**



US 77/K-18 Plan Plates

Disclaimer: These concepts are current as of December 2008 and depict recommended improvements for US 77 from Lyons Creek Road to 12th Street and K-18 from US 77 to the Dickinson County Line. The exact location, design, and right-of-way for the corridor cannot be determined from these concepts and could be different from that shown. Additional preliminary design will need to be performed to further refine these improvements and the right-of-way requirements.



US-77/K-18 Mainline

- 4 Lane Section
- 2 - 3 Lane Section
- Pedestrian Connection
- Future Access Removal
- Pavement Removal
- Bridge

Parallel Road Network

- Arterial
- Collector
- Local Road
- New Roadway (All Types)
- Parcel Boundaries
- Corp of Engineers Limits
- City Limits

**US 77 / K-18
Corridor Study
Ultimate Improvements
(+/- 2018)
Inset 1b (Option)**

