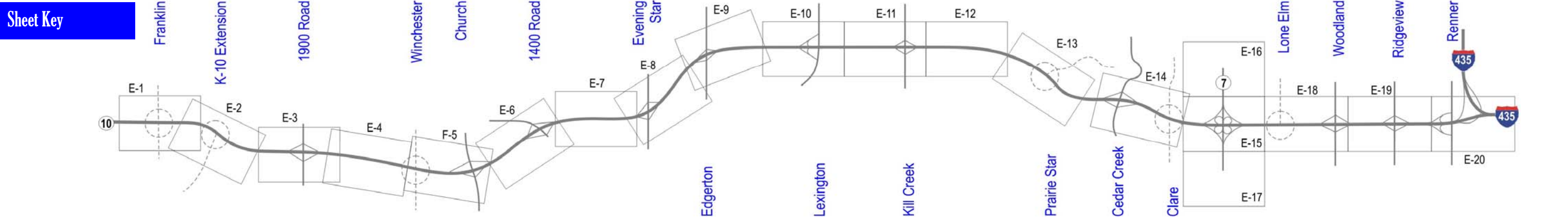
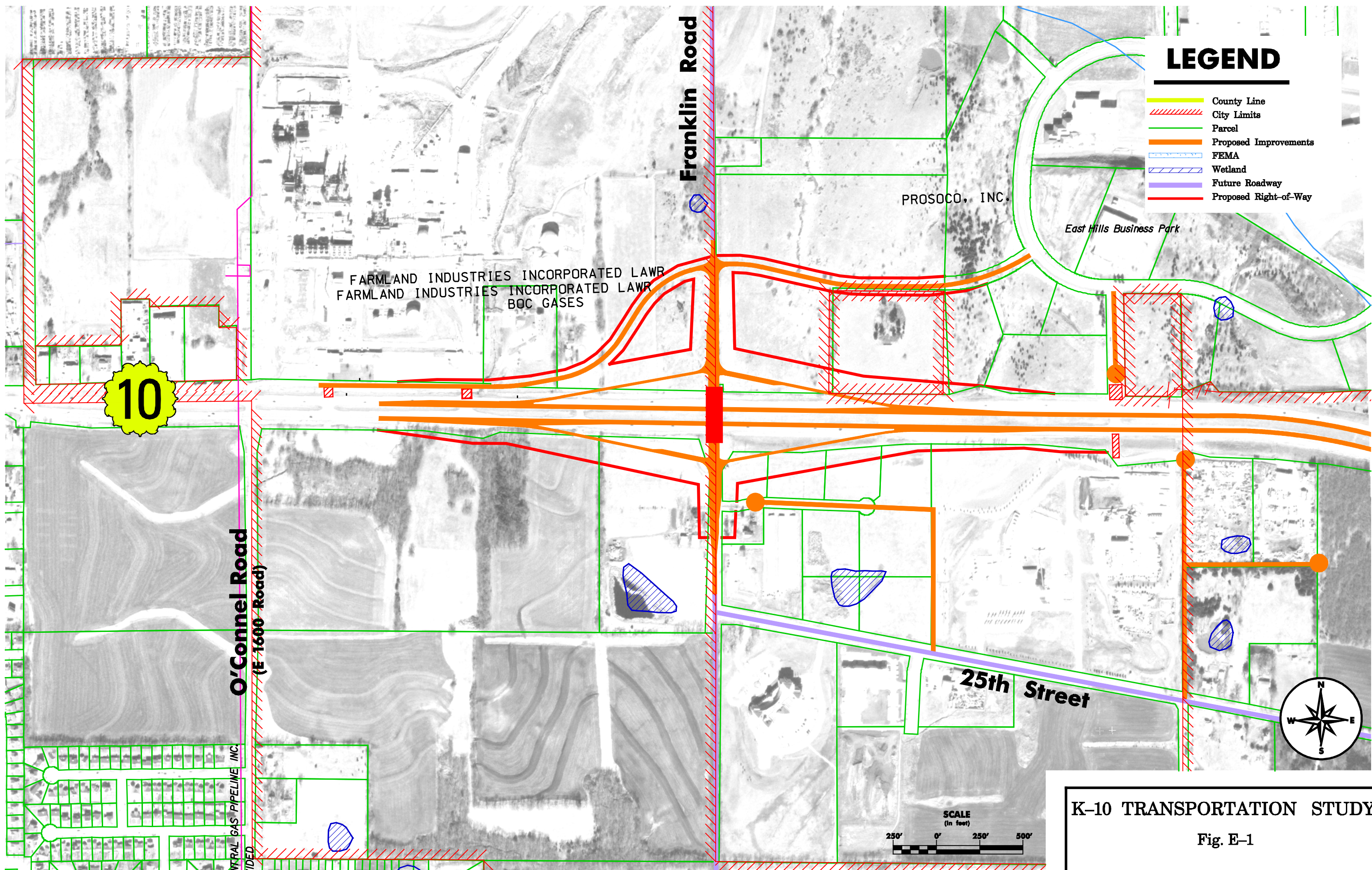


Appendix E: Conceptual K-10 Mainline Layout





LEGEND

- County Line
- City Limits
- Parcel
- Proposed Improvements
- FEMA
- Wetland
- Future Roadway
- Proposed Right-of-Way

10

FARMLAND INDUSTRIES INCORPORATED LAWR
 FARMLAND INDUSTRIES INCORPORATED LAWR
 BOC GASES

PROSOCO, INC.

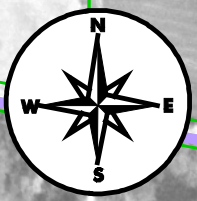
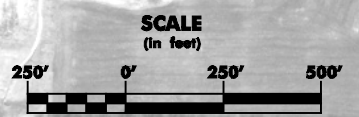
East Hills Business Park

O'Connell Road
 (E 1600 Road)

Franklin Road

25th Street

NATURAL GAS PIPELINE INC.
 7100

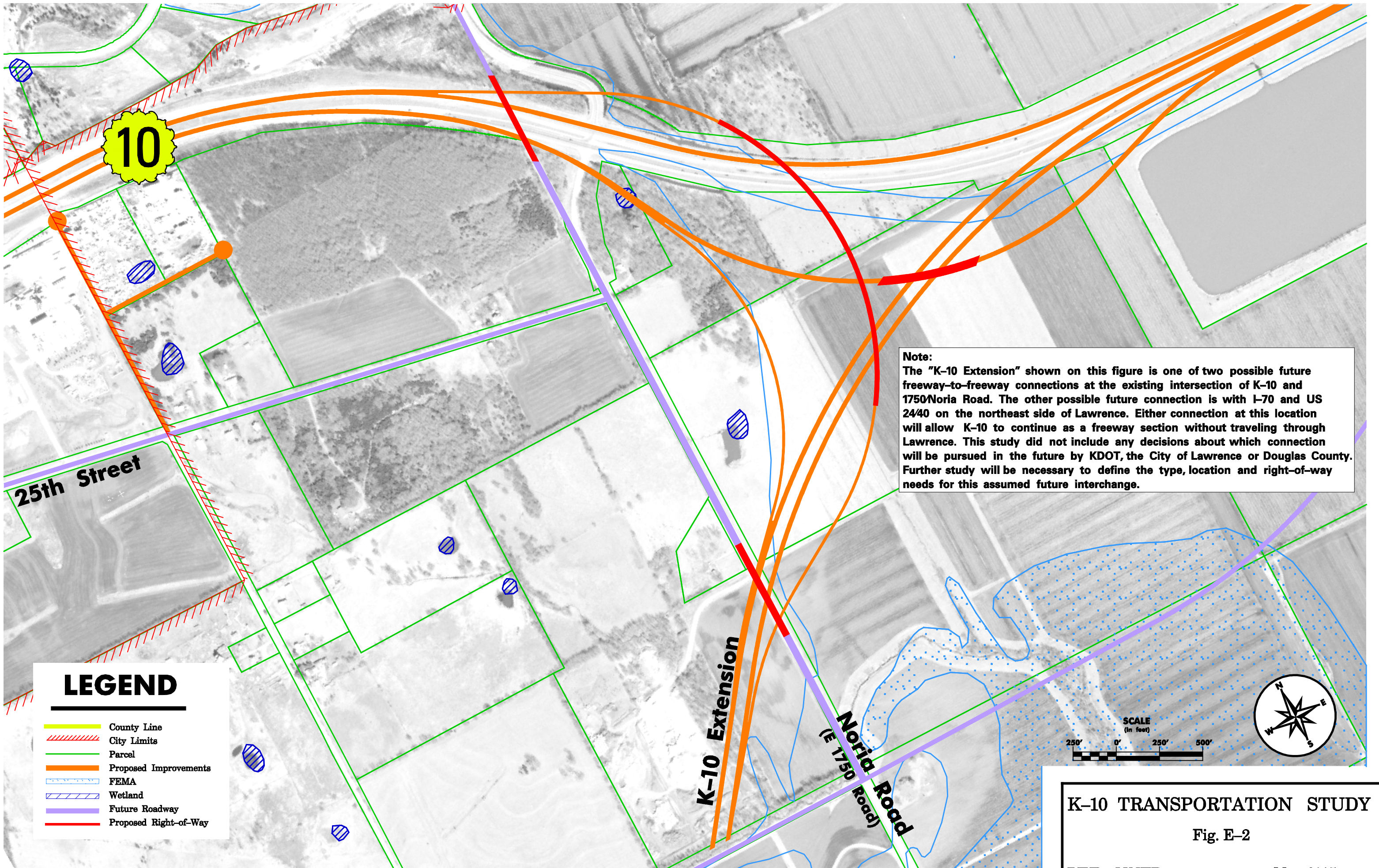


K-10 TRANSPORTATION STUDY

Fig. E-1

HDR HNTB

May 2005



Note:
 The "K-10 Extension" shown on this figure is one of two possible future freeway-to-freeway connections at the existing intersection of K-10 and 1750/Noria Road. The other possible future connection is with I-70 and US 24/40 on the northeast side of Lawrence. Either connection at this location will allow K-10 to continue as a freeway section without traveling through Lawrence. This study did not include any decisions about which connection will be pursued in the future by KDOT, the City of Lawrence or Douglas County. Further study will be necessary to define the type, location and right-of-way needs for this assumed future interchange.

LEGEND

- County Line
- / / / / / City Limits
- Parcel
- Proposed Improvements
- - - - - FEMA
- / / / / / Wetland
- Future Roadway
- Proposed Right-of-Way

SCALE
 (in feet)

250' 0' 250' 500'

K-10 TRANSPORTATION STUDY
 Fig. E-2
HDR HNTB May 2005