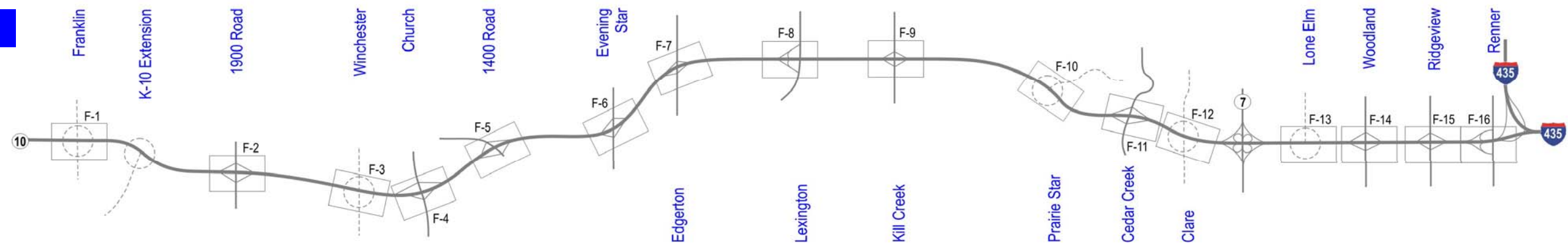
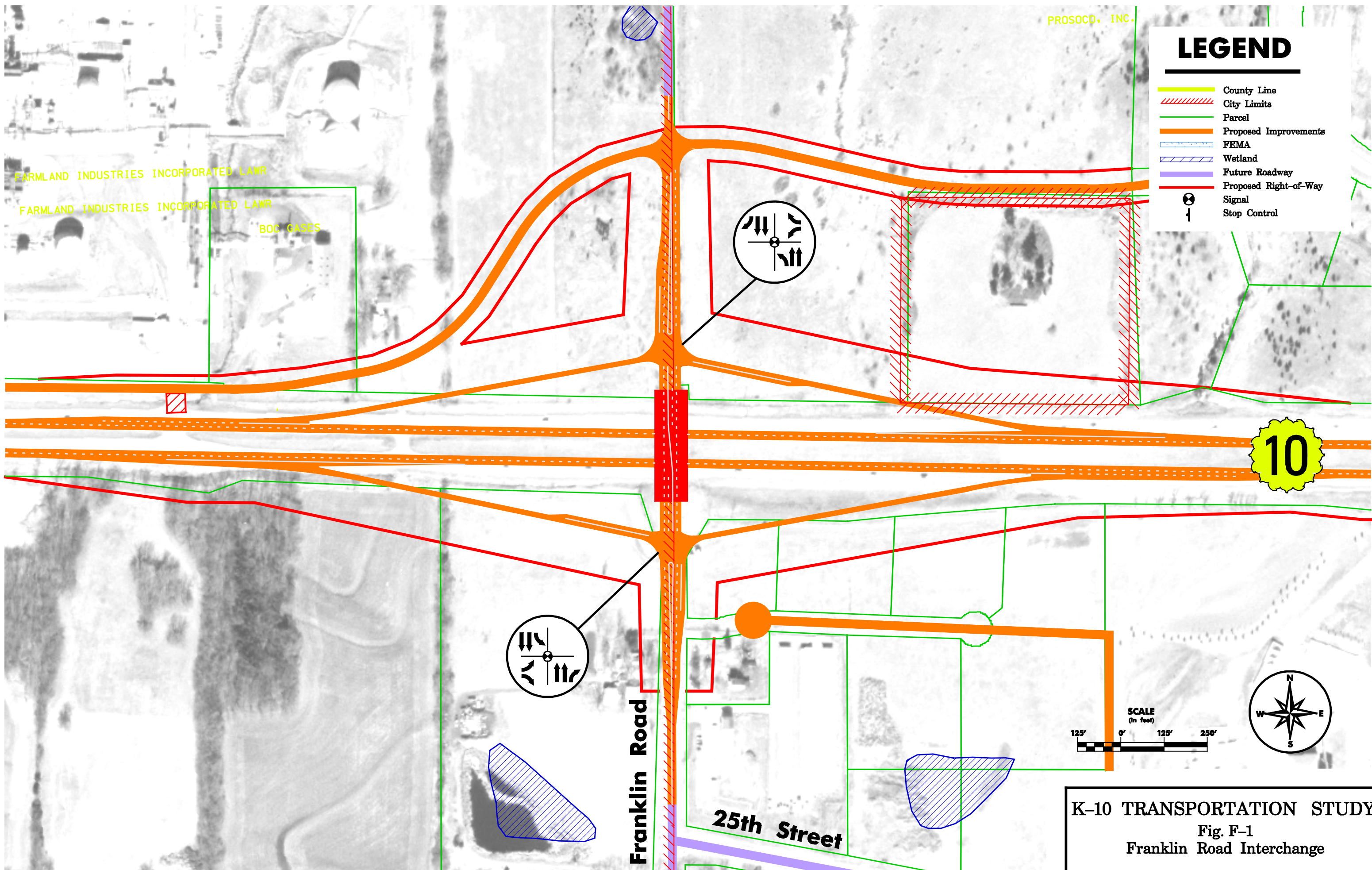


Appendix F: Conceptual K-10 Interchanges Layout



Sheet Key





LEGEND

- County Line
- City Limits
- Parcel
- Proposed Improvements
- FEMA
- Wetland
- Future Roadway
- Proposed Right-of-Way
- ⊙ Signal
- ↓ Stop Control

FARMLAND INDUSTRIES INCORPORATED LAWR
 FARMLAND INDUSTRIES INCORPORATED LAWR

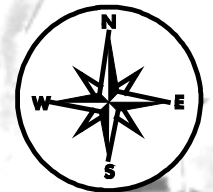
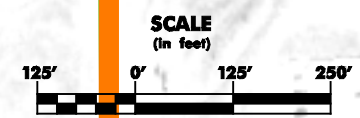
BOC CASES

PROSOCO, INC.

Franklin Road

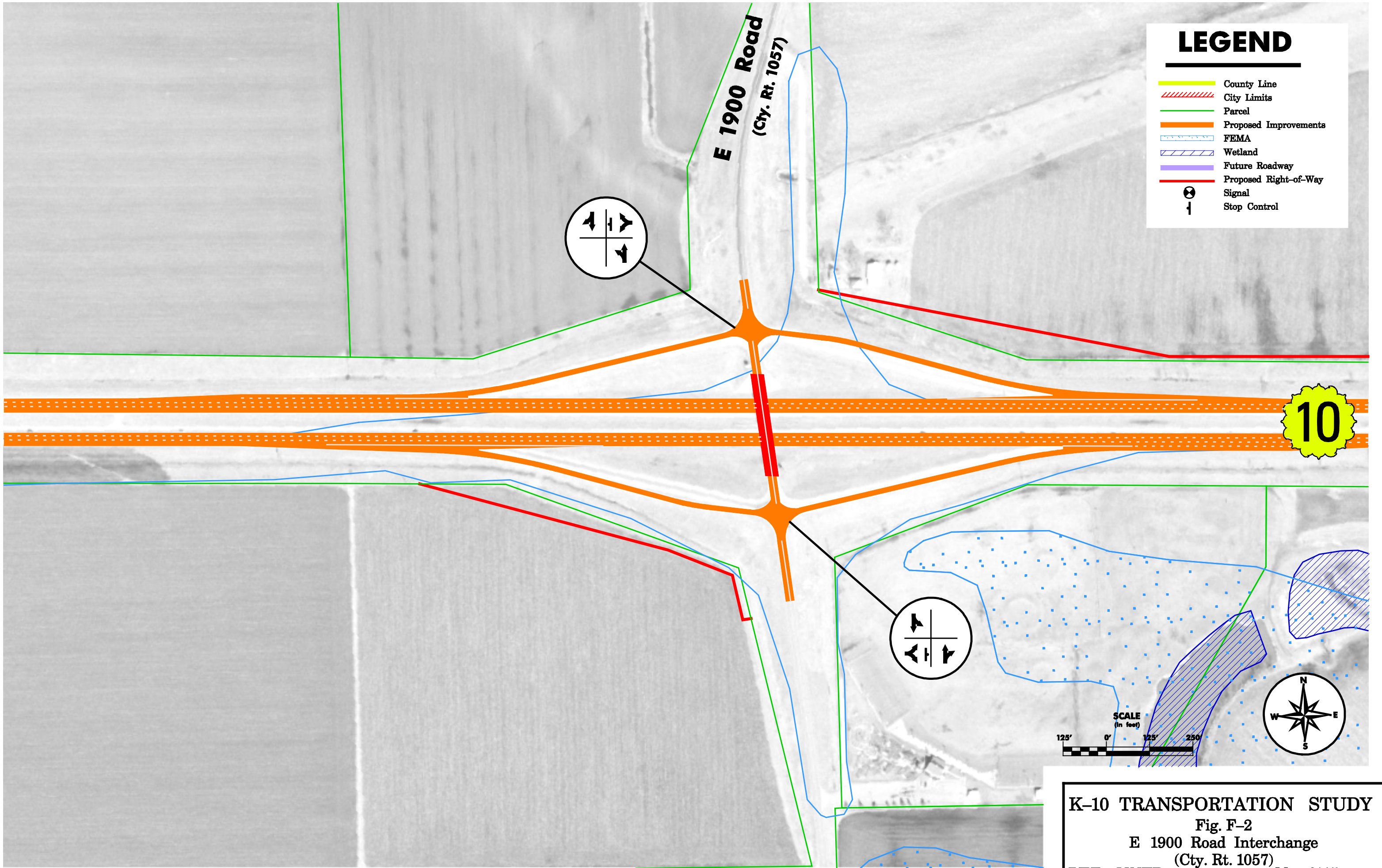
25th Street

10



K-10 TRANSPORTATION STUDY
 Fig. F-1
 Franklin Road Interchange

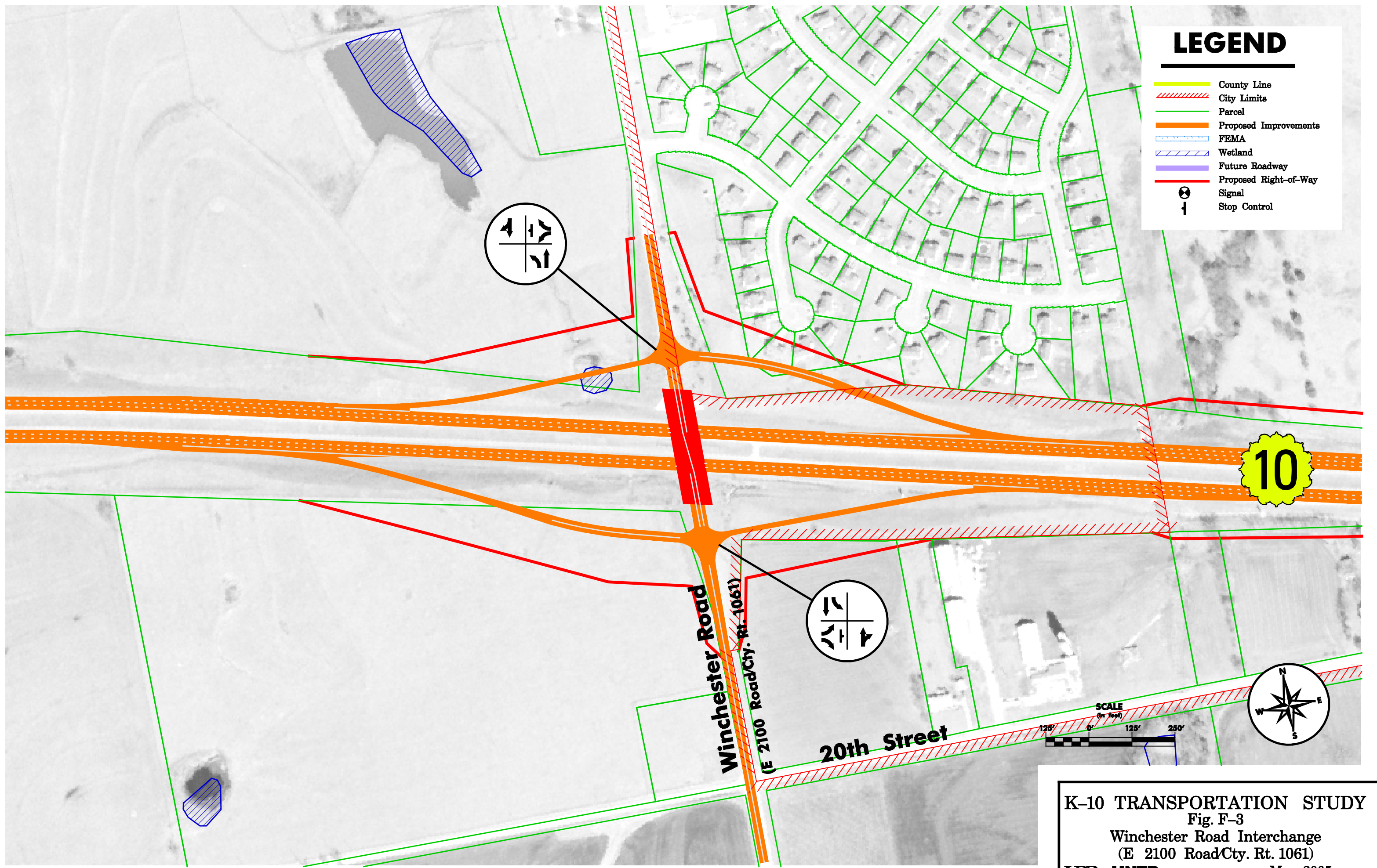
HDR HNTB May 2005



K-10 TRANSPORTATION STUDY
Fig. F-2
E 1900 Road Interchange
(Cty. Rt. 1057)
HDR HNTB May 2005

LEGEND

- County Line
- City Limits
- Parcel
- Proposed Improvements
- FEMA
- Wetland
- Future Roadway
- Proposed Right-of-Way
- Signal
- Stop Control

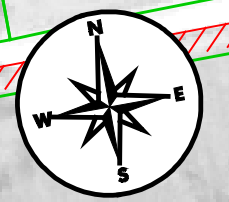
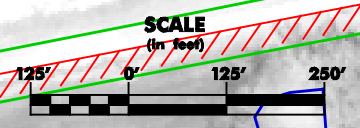


10

Winchester Road

(E 2100 Road/Cty. Rt. 1061)

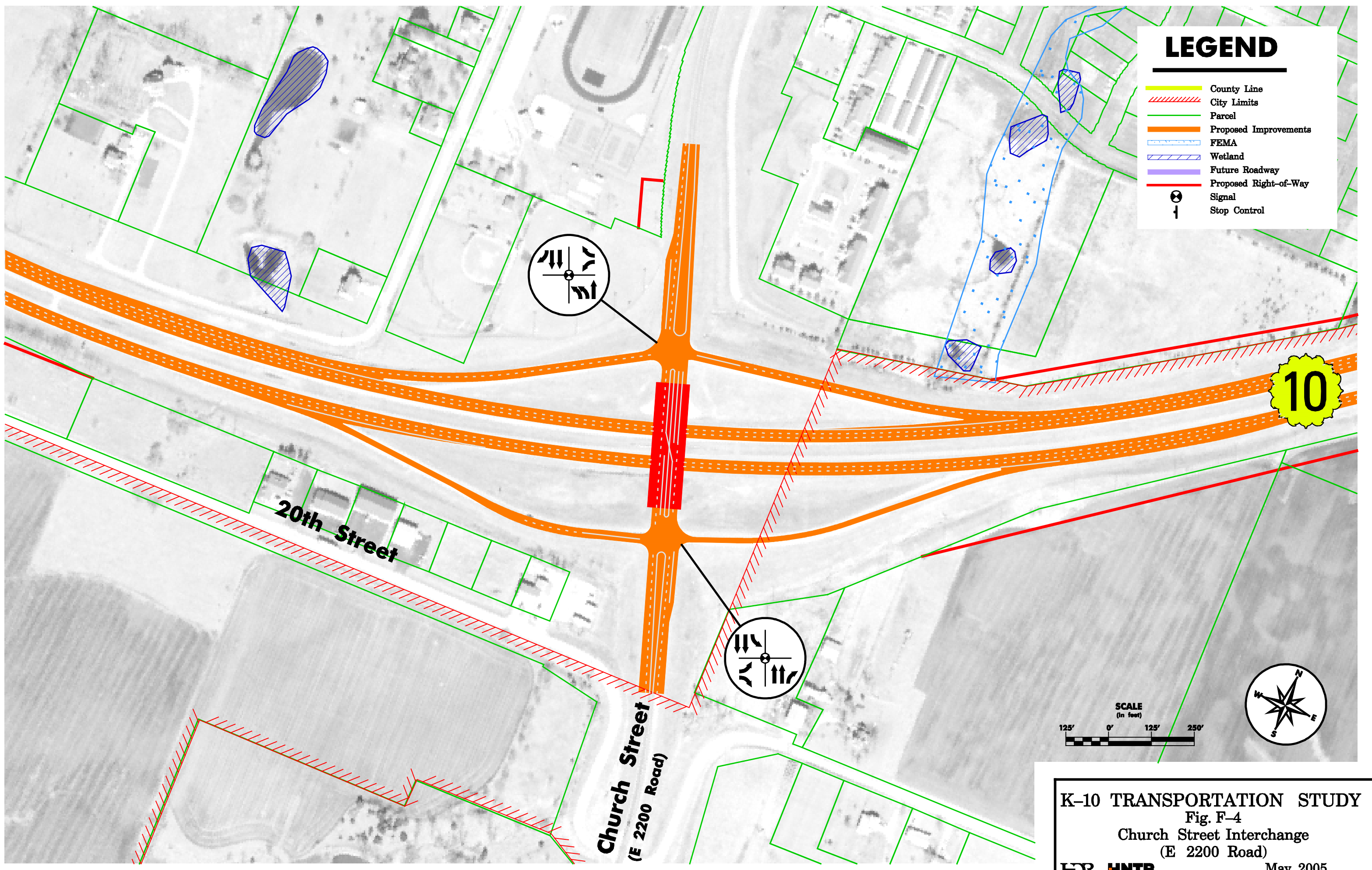
20th Street



K-10 TRANSPORTATION STUDY
Fig. F-3
Winchester Road Interchange
(E 2100 Road/Cty. Rt. 1061)
HDR HNTB May 2005

LEGEND

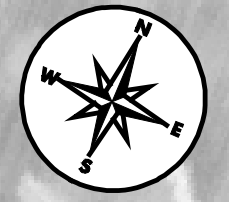
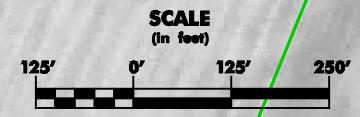
- County Line
- City Limits
- Parcel
- Proposed Improvements
- FEMA
- Wetland
- Future Roadway
- Proposed Right-of-Way
- Signal
- Stop Control



20th Street

Church Street
(E 2200 Road)

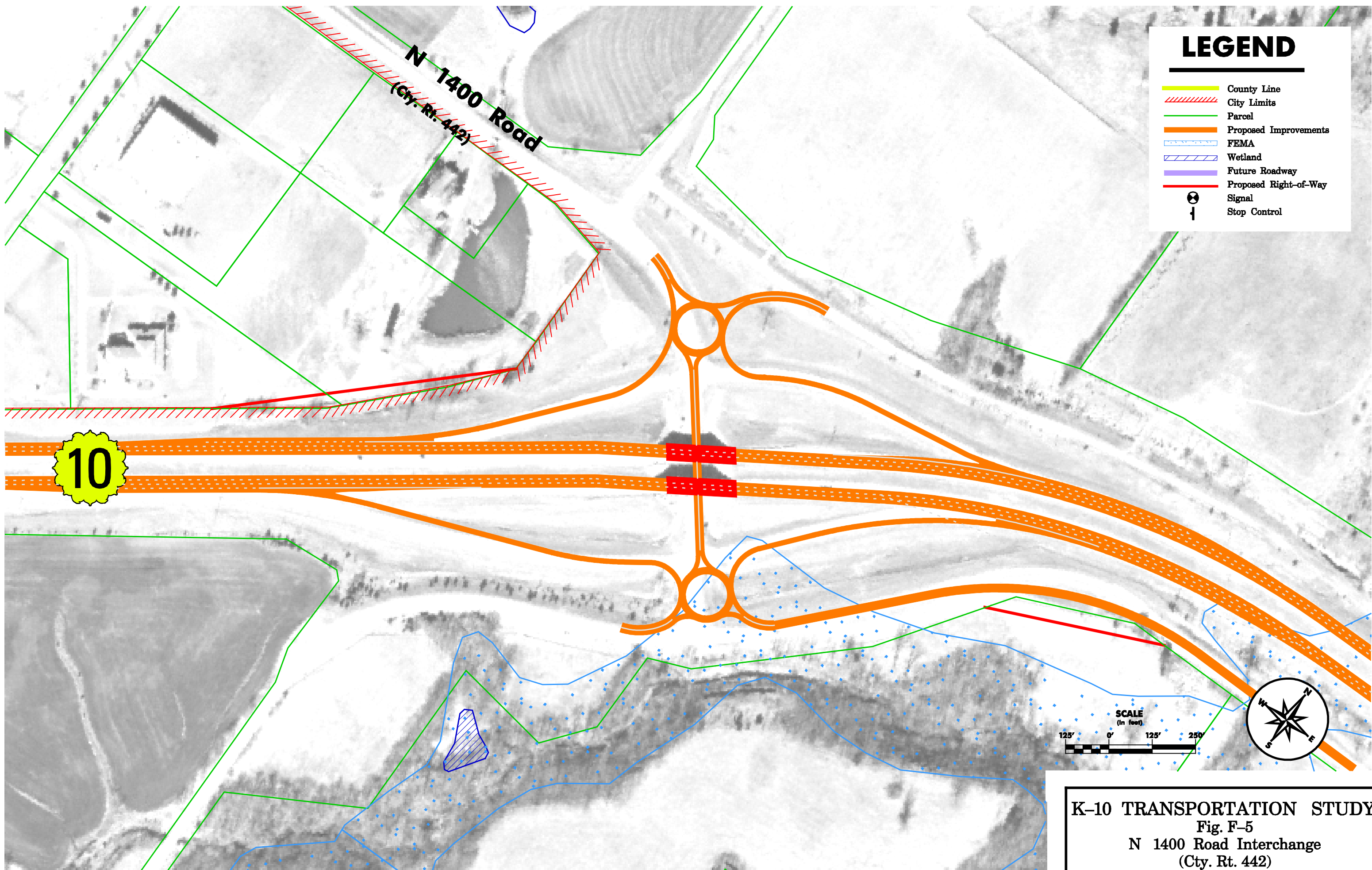
10



K-10 TRANSPORTATION STUDY
Fig. F-4
Church Street Interchange
(E 2200 Road)
HDR HNTB May 2005

LEGEND

- County Line
- City Limits
- Parcel
- Proposed Improvements
- FEMA
- Wetland
- Future Roadway
- Proposed Right-of-Way
- Signal
- Stop Control



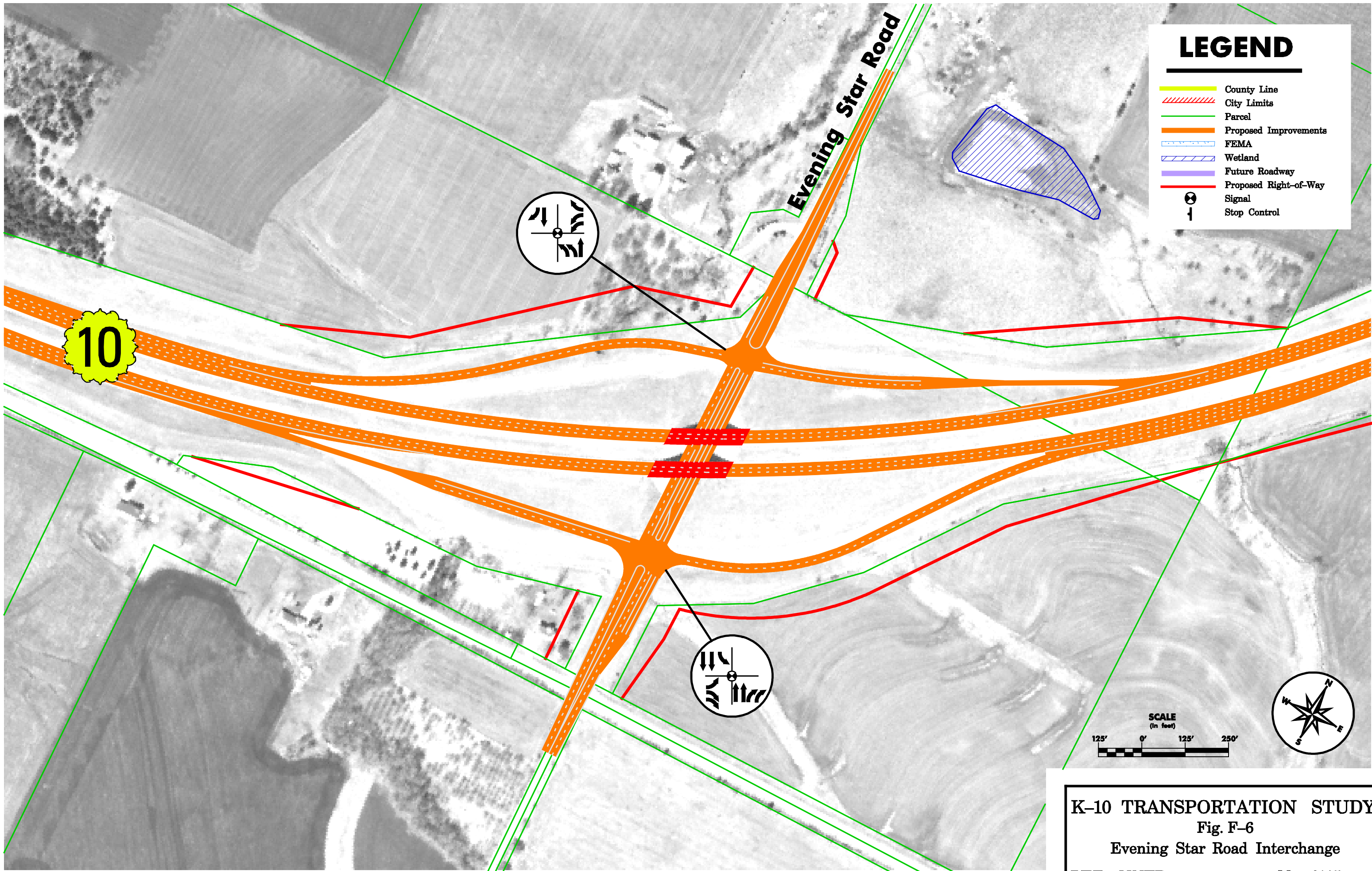
10

N 1400 Road
(Cty. Rt. 442)

SCALE
(in feet)
125' 0' 125' 250'

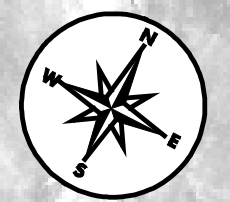
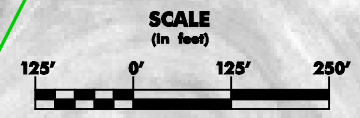


K-10 TRANSPORTATION STUDY
Fig. F-5
N 1400 Road Interchange
(Cty. Rt. 442)
HDR HNTB May 2005

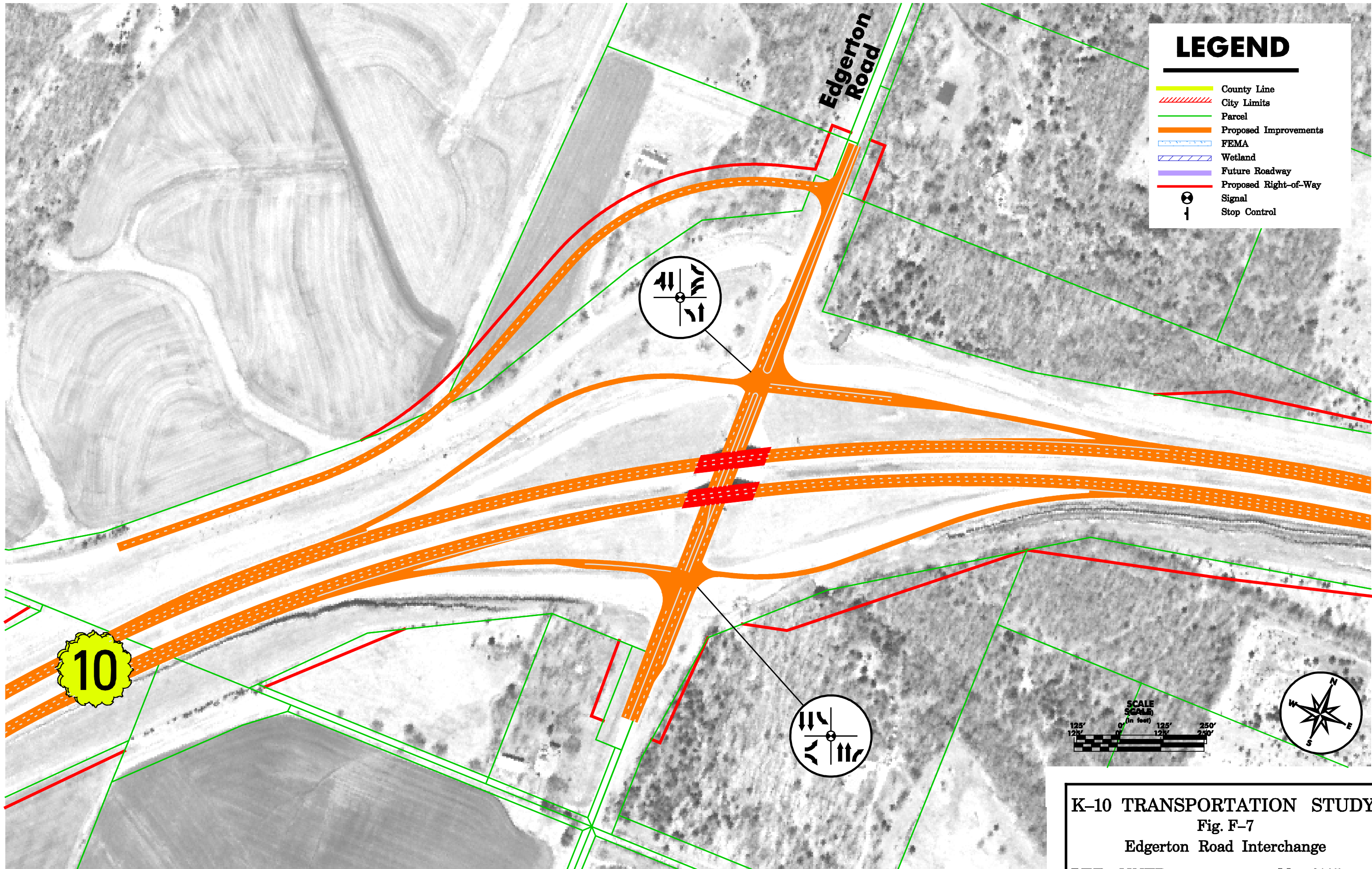


LEGEND

- County Line
- - - City Limits
- Parcel
- Proposed Improvements
- - - FEMA
- ▨ Wetland
- Future Roadway
- Proposed Right-of-Way
- Signal
- Stop Control



K-10 TRANSPORTATION STUDY
Fig. F-6
Evening Star Road Interchange
HDR HNTB May 2005

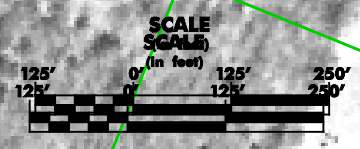


LEGEND

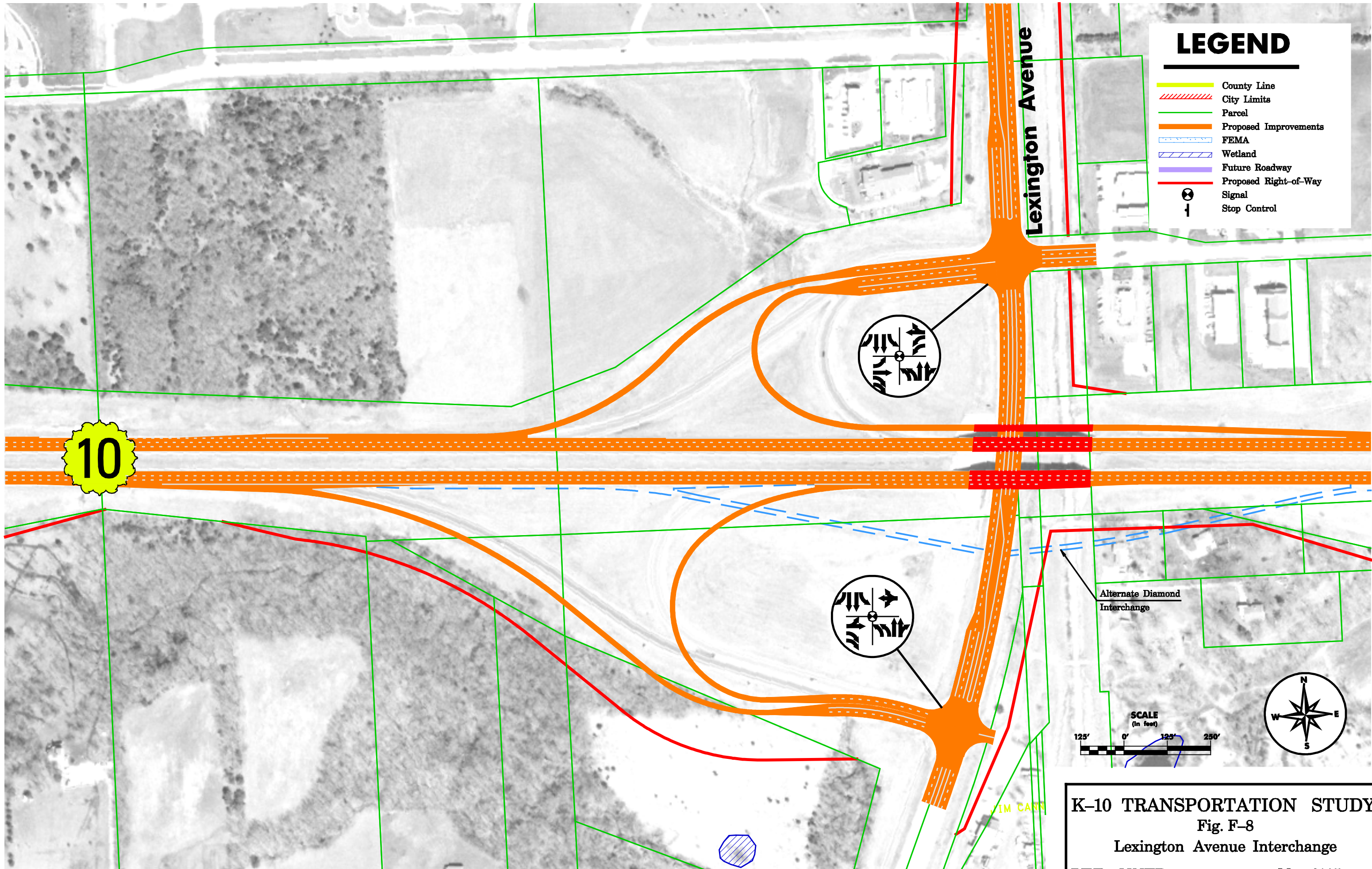
- County Line
- City Limits
- Parcel
- Proposed Improvements
- FEMA
- Wetland
- Future Roadway
- Proposed Right-of-Way
- ⊗ Signal
- ↓ Stop Control

10











Edgerton Road



K-10 TRANSPORTATION STUDY
 Fig. F-7
 Edgerton Road Interchange
HDR HNTB May 2005




LEGEND

-  County Line
-  City Limits
-  Parcel
-  Proposed Improvements
-  FEMA
-  Wetland
-  Future Roadway
-  Proposed Right-of-Way
-  Signal
-  Stop Control

Alternate Diamond Interchange

SCALE
(in feet)

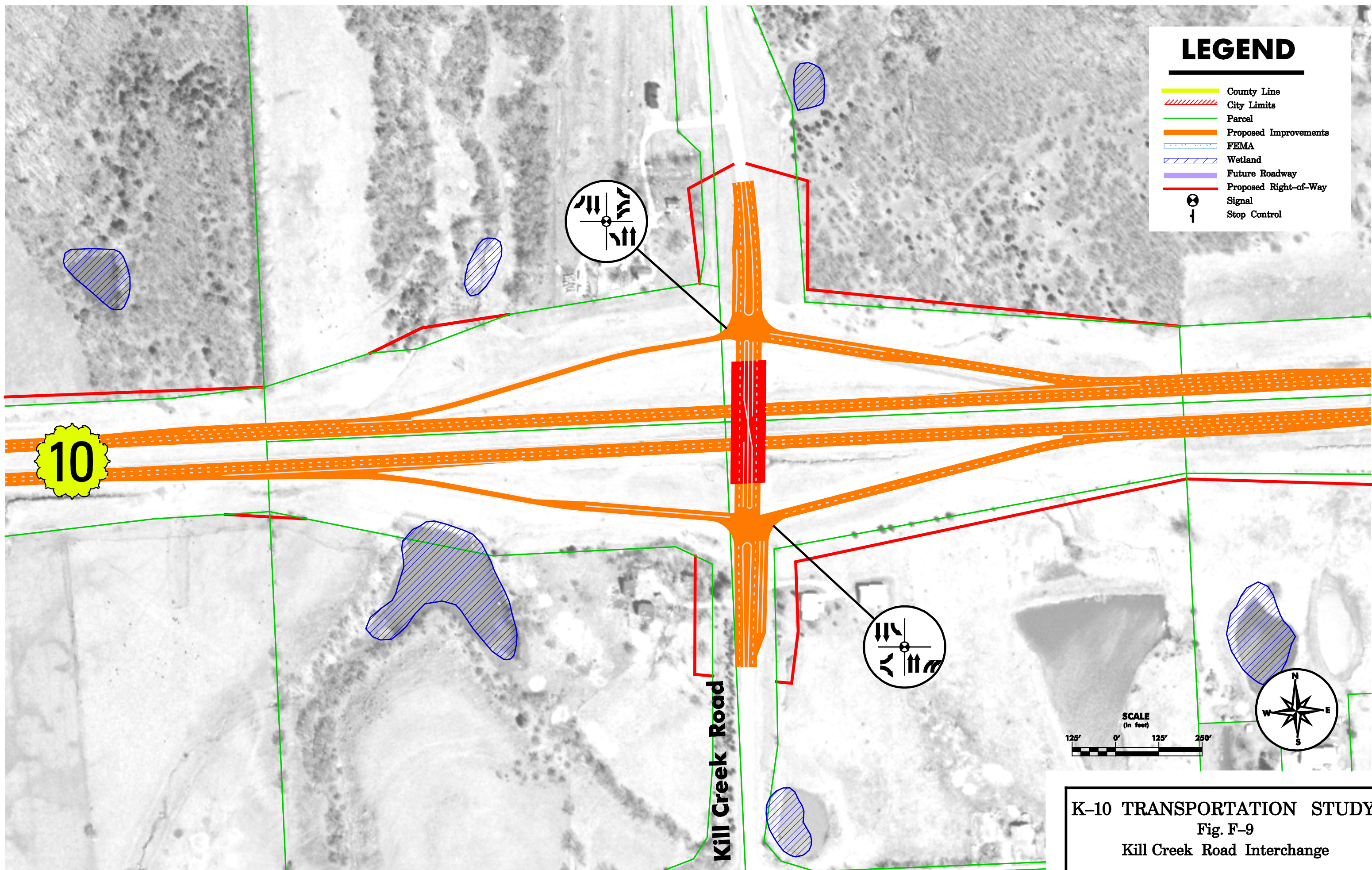
125' 0' 125' 250'



K-10 TRANSPORTATION STUDY
Fig. F-8
Lexington Avenue Interchange
HDR HNTB May 2005

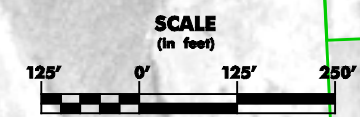
LEGEND

- County Line
- City Limits
- Parcel
- Proposed Improvements
- FEMA
- Wetland
- Future Roadway
- Proposed Right-of-Way
- Signal
- Stop Control

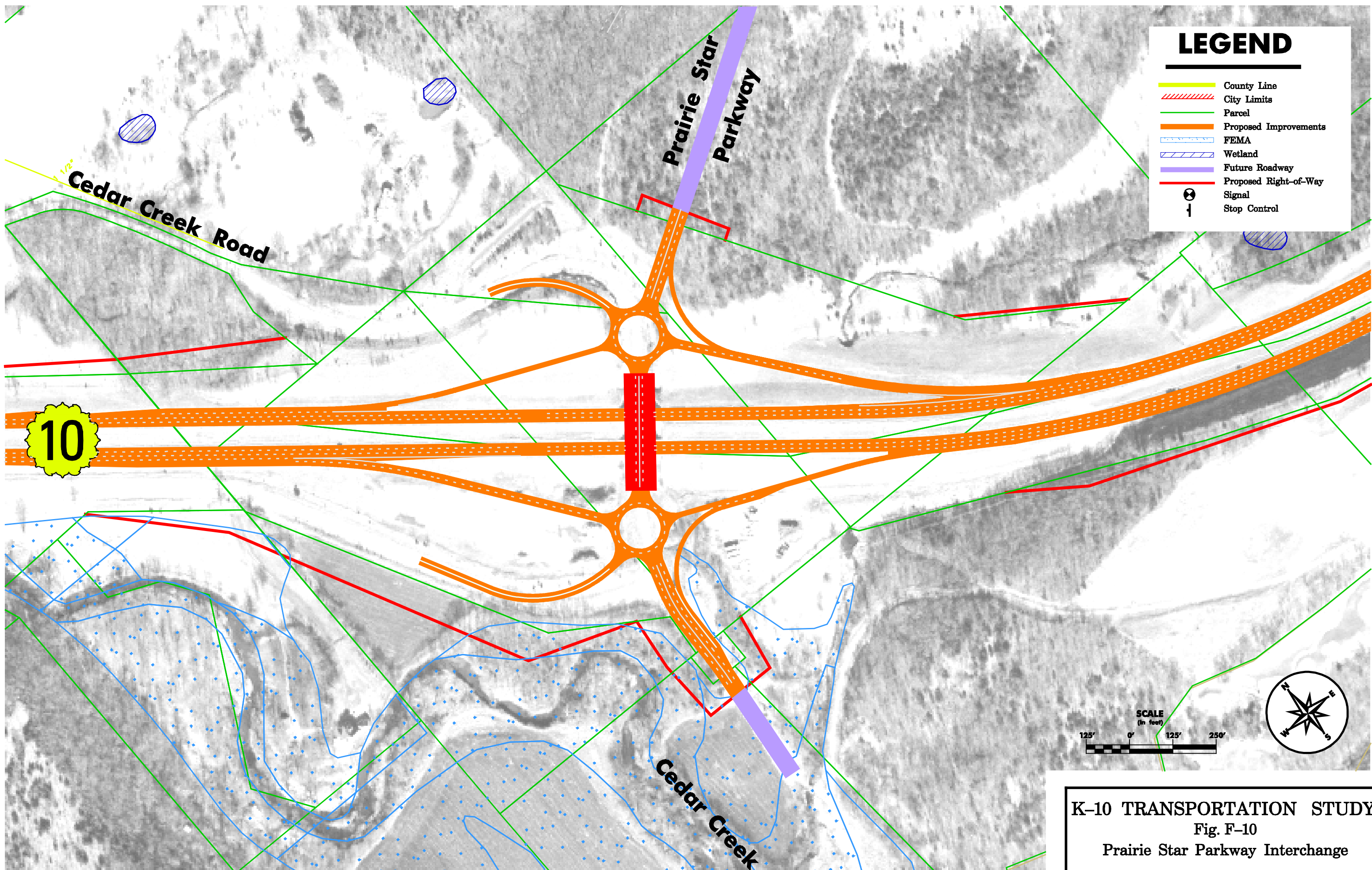


10

Kill Creek Road

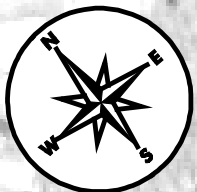
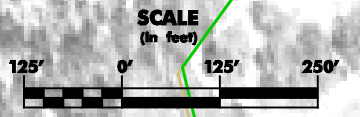


K-10 TRANSPORTATION STUDY
Fig. F-9
Kill Creek Road Interchange
HDR HNTB May 2005



LEGEND

- County Line
- City Limits
- Parcel
- Proposed Improvements
- FEMA
- Wetland
- Future Roadway
- Proposed Right-of-Way
- ⊗ Signal
- ⊥ Stop Control

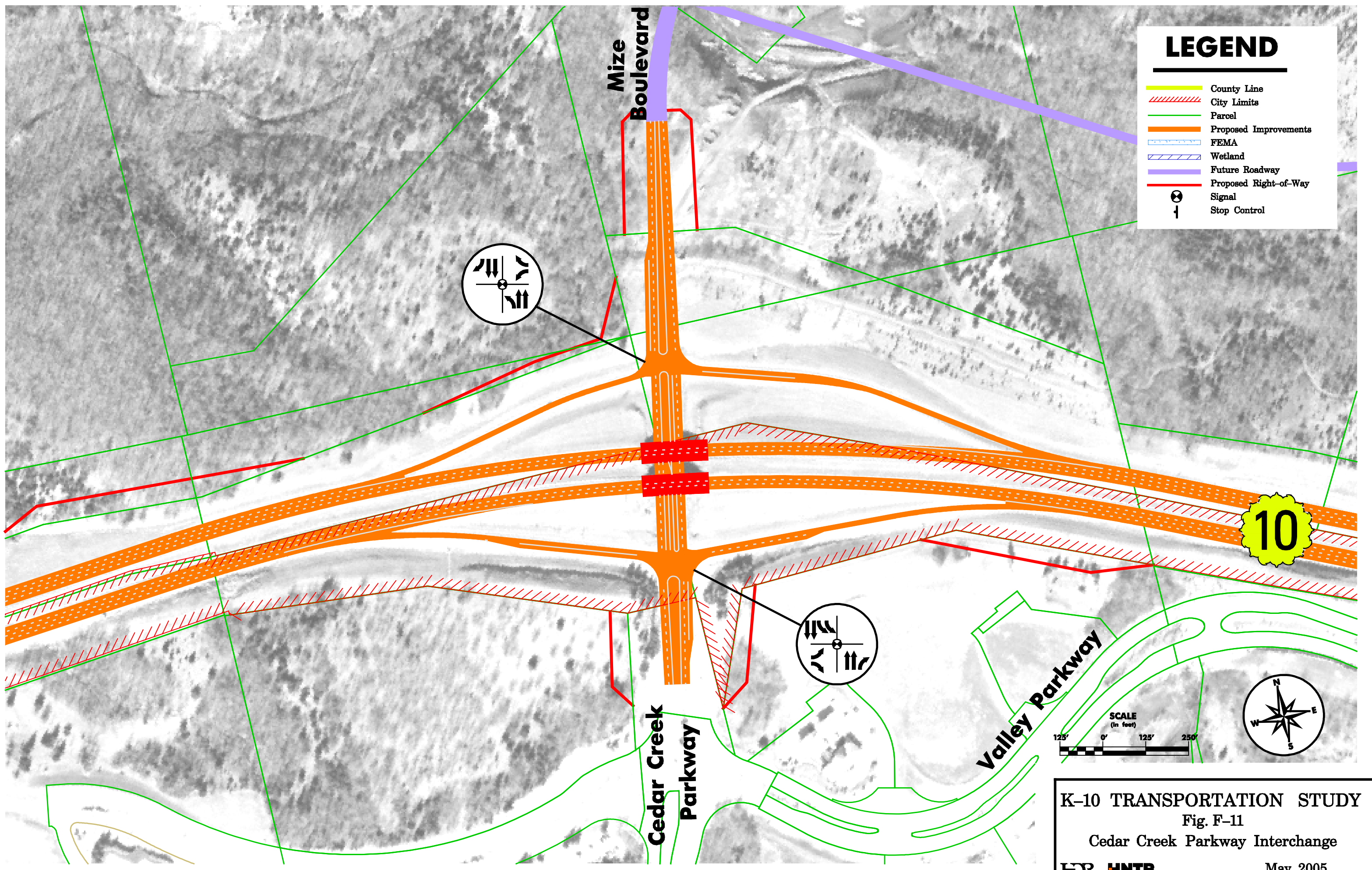


K-10 TRANSPORTATION STUDY
 Fig. F-10
 Prairie Star Parkway Interchange

HDR HNTB May 2005

LEGEND

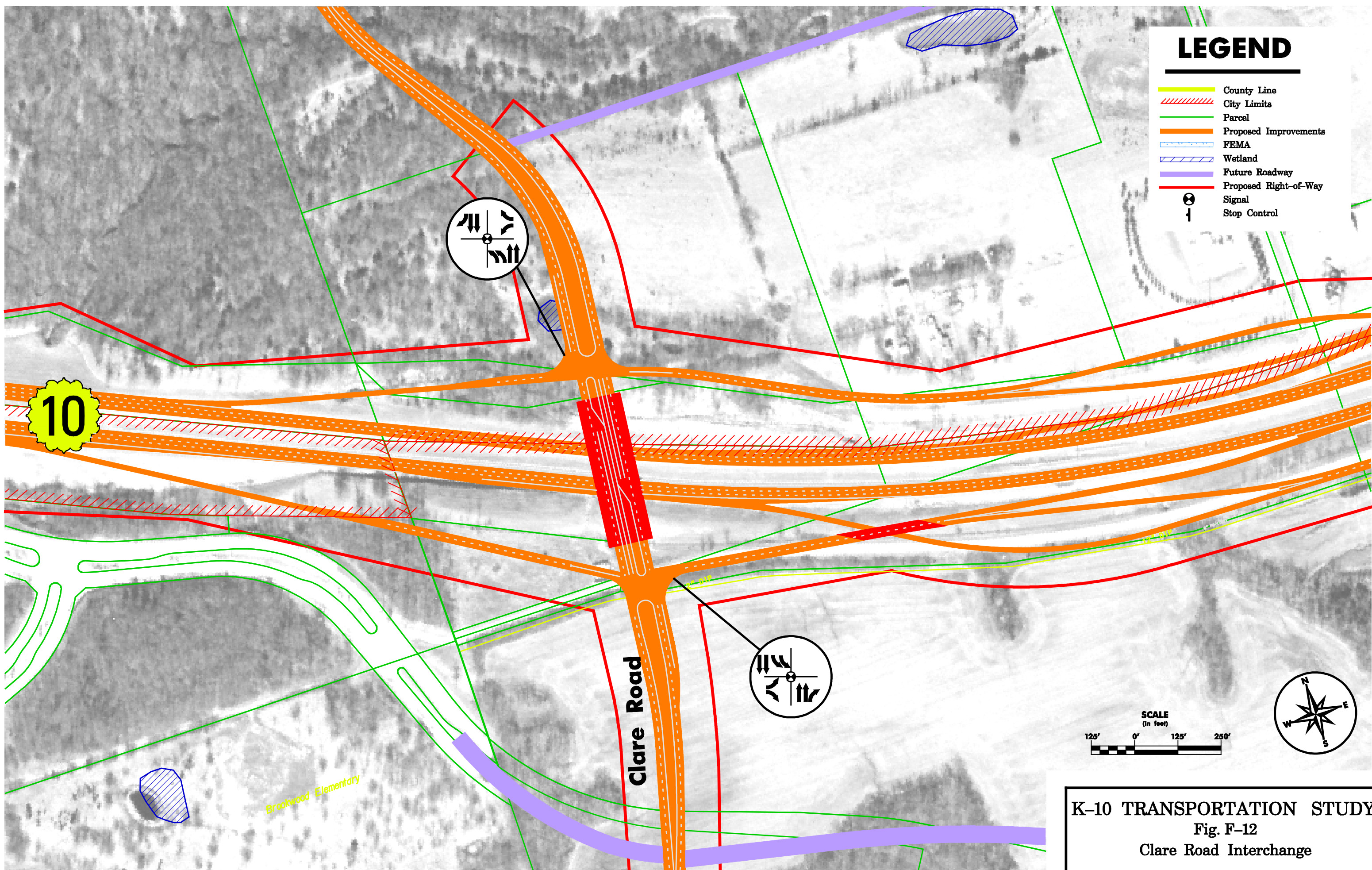
- County Line
- City Limits
- Parcel
- Proposed Improvements
- FEMA
- Wetland
- Future Roadway
- Proposed Right-of-Way
- Signal
- Stop Control



K-10 TRANSPORTATION STUDY
Fig. F-11
Cedar Creek Parkway Interchange
HDR HNTB
May 2005

LEGEND

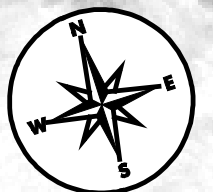
- County Line
- City Limits
- Parcel
- Proposed Improvements
- FEMA
- Wetland
- Future Roadway
- Proposed Right-of-Way
- Signal
- Stop Control



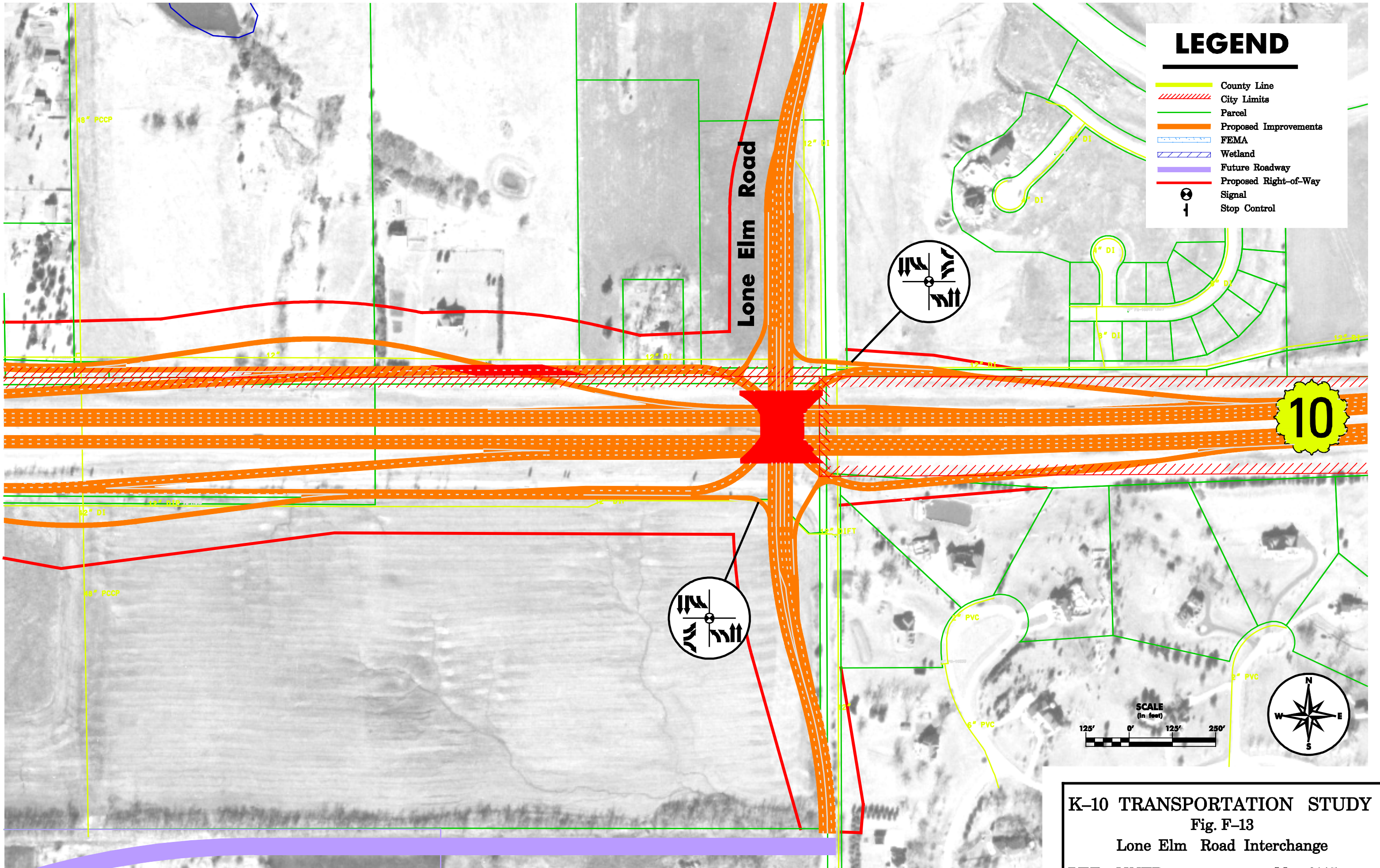
Clare Road

10

Brookwood Elementary



K-10 TRANSPORTATION STUDY
Fig. F-12
Clare Road Interchange
HDR HNTB May 2005



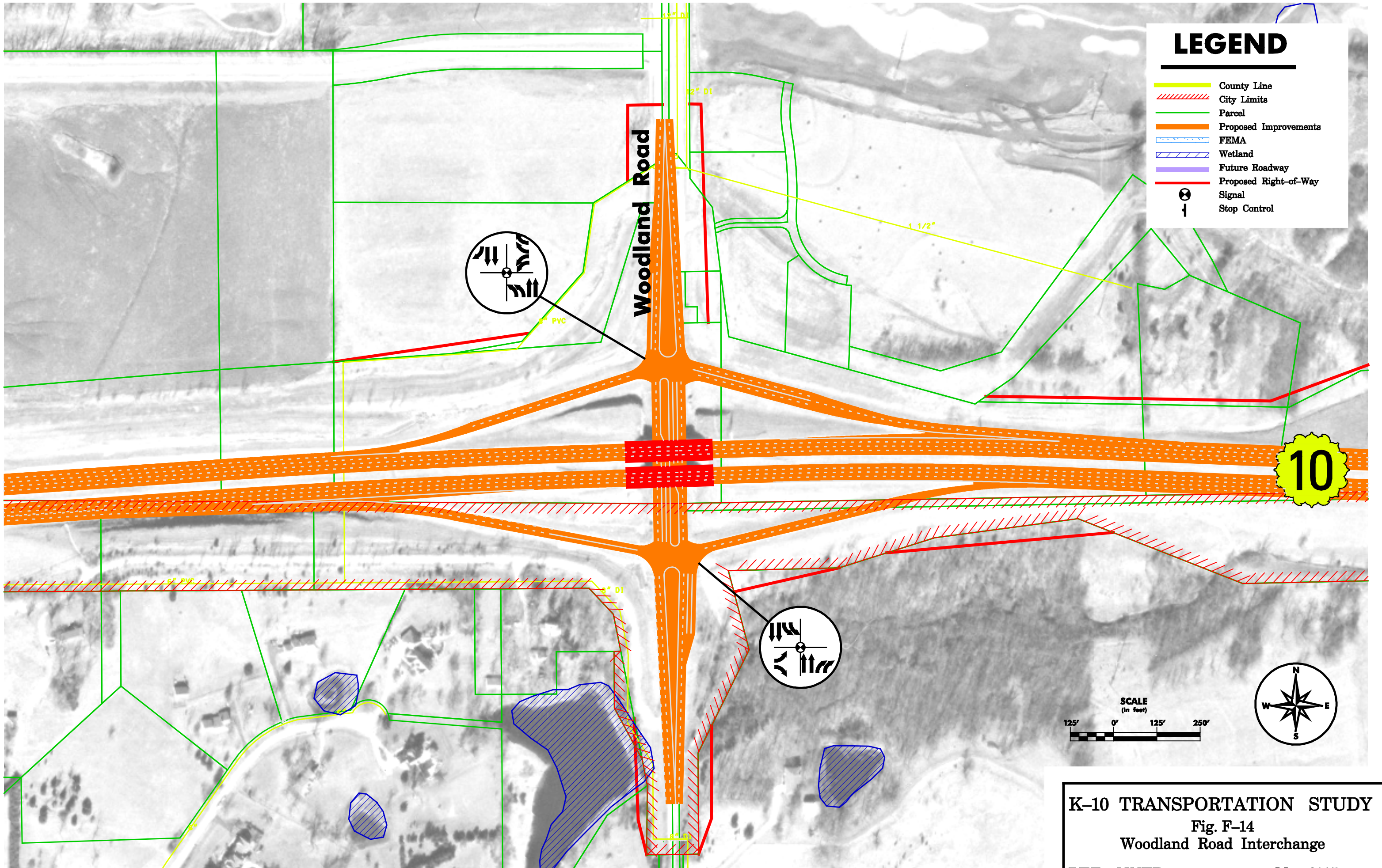
LEGEND

- County Line
- City Limits
- Parcel
- Proposed Improvements
- FEMA
- Wetland
- Future Roadway
- Proposed Right-of-Way
- Signal
- Stop Control

SCALE
(in feet)

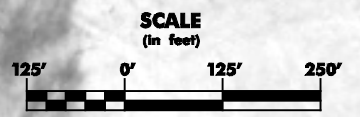
125' 0' 125' 250'

K-10 TRANSPORTATION STUDY
Fig. F-13
 Lone Elm Road Interchange
HDR HNTB May 2005

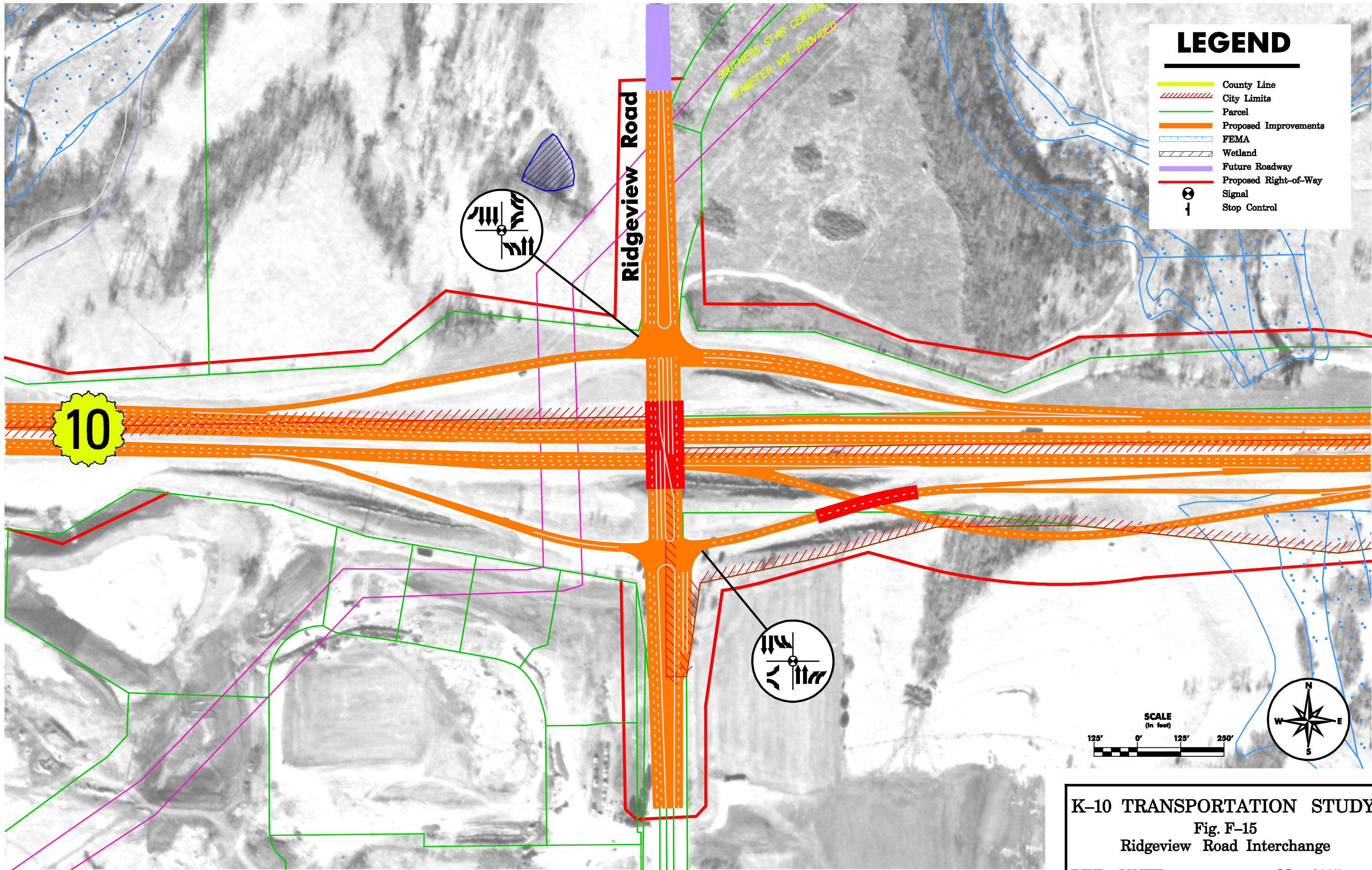


LEGEND

- County Line
- - - City Limits
- Parcel
- - - Proposed Improvements
- - - FEMA
- - - Wetland
- Future Roadway
- - - Proposed Right-of-Way
- Signal
- Stop Control



K-10 TRANSPORTATION STUDY
 Fig. F-14
 Woodland Road Interchange
HDR HNTB May 2005



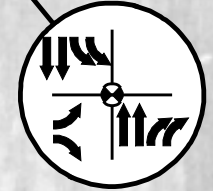
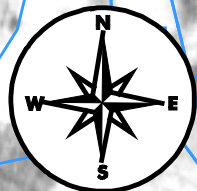
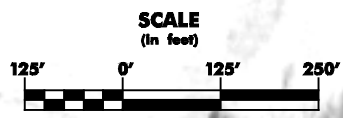
LEGEND

- County Line
- City Limits
- Parcel
- Proposed Improvements
- FEMA
- Wetland
- Future Roadway
- Proposed Right-of-Way
- ⊗ Signal
- ⊥ Stop Control

Ridgeview Road

10

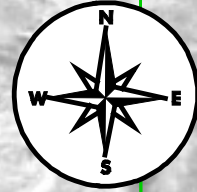
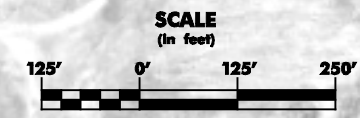
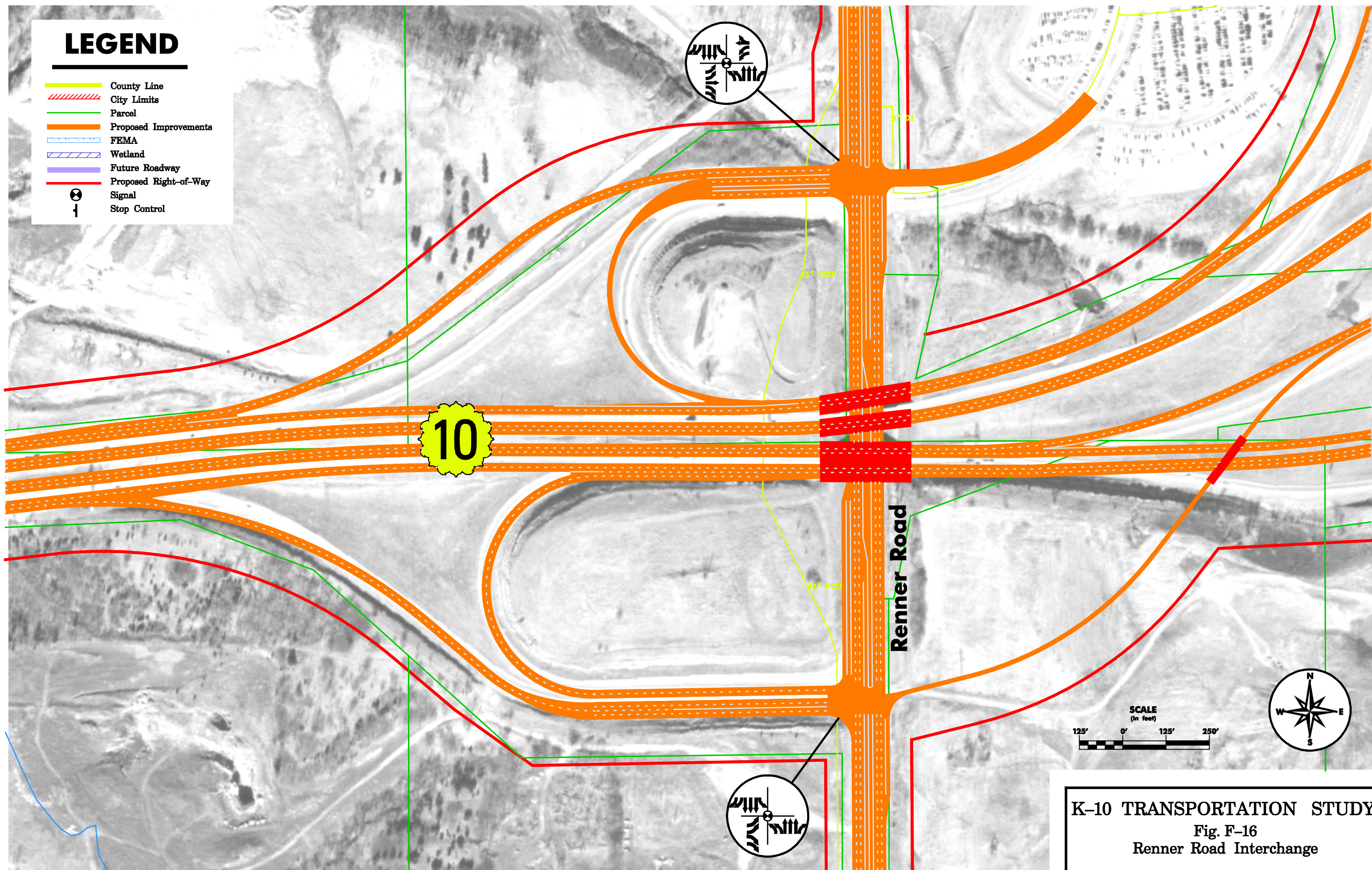
SOUTHERN STAR CENTRAL
DIAMETER NOT PROVIDED



K-10 TRANSPORTATION STUDY
 Fig. F-15
 Ridgeview Road Interchange
HDR HNTB May 2005

LEGEND

- County Line
- City Limits
- Parcel
- Proposed Improvements
- FEMA
- Wetland
- Future Roadway
- Proposed Right-of-Way
- Signal
- Stop Control



K-10 TRANSPORTATION STUDY

Fig. F-16

Renner Road Interchange

HDR HNTB

May 2005