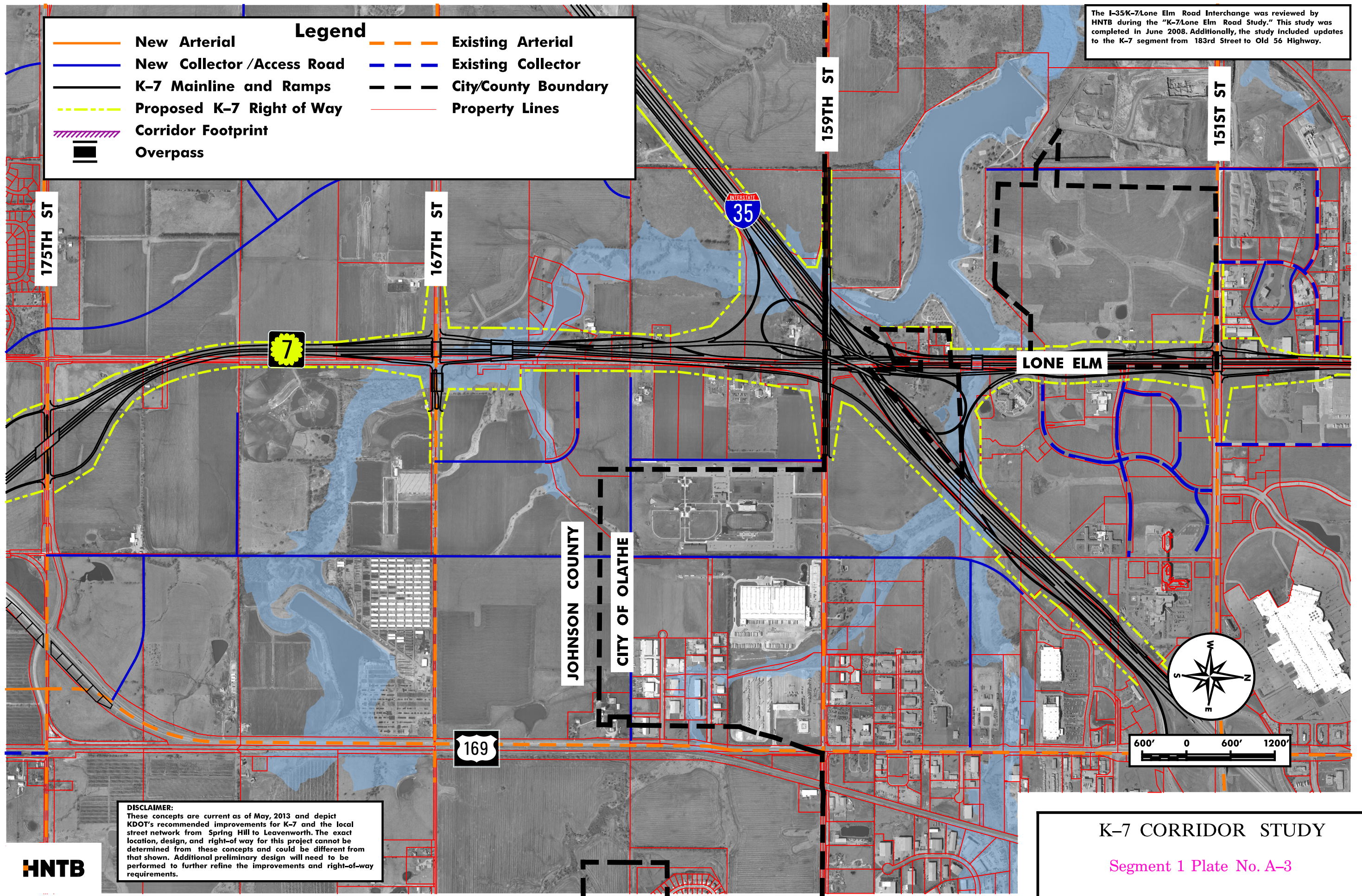


The I-35/K-7/Lone Elm Road Interchange was reviewed by HNTB during the "K-7/Lone Elm Road Study." This study was completed in June 2008. Additionally, the study included updates to the K-7 segment from 183rd Street to Old 56 Highway.

Legend			
	New Arterial		Existing Arterial
	New Collector /Access Road		Existing Collector
	K-7 Mainline and Ramps		City/County Boundary
	Proposed K-7 Right of Way		Property Lines
	Corridor Footprint		
	Overpass		



**DISCLAIMER:**  
 These concepts are current as of May, 2013 and depict KDOT's recommended improvements for K-7 and the local street network from Spring Hill to Leavenworth. The exact location, design, and right-of way for this project cannot be determined from these concepts and could be different from that shown. Additional preliminary design will need to be performed to further refine the improvements and right-of-way requirements.



**K-7 CORRIDOR STUDY**

Segment 1 Plate No. A-3

Date of Aerials: 2010 June 2015