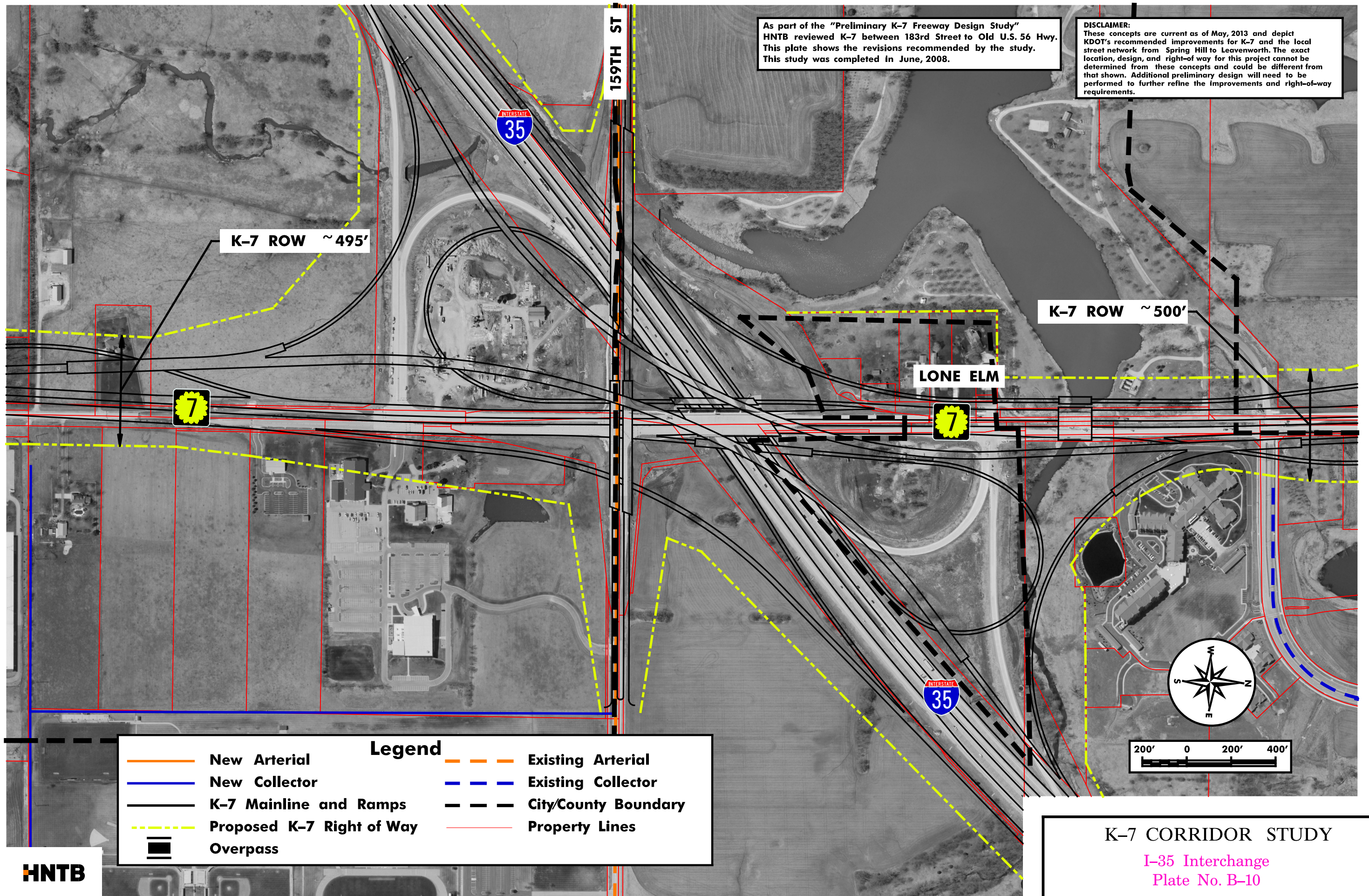


As part of the "Preliminary K-7 Freeway Design Study" HNTB reviewed K-7 between 183rd Street to Old U.S. 56 Hwy. This plate shows the revisions recommended by the study. This study was completed in June, 2008.

**DISCLAIMER:**  
 These concepts are current as of May, 2013 and depict KDOT's recommended improvements for K-7 and the local street network from Spring Hill to Leavenworth. The exact location, design, and right-of-way for this project cannot be determined from these concepts and could be different from that shown. Additional preliminary design will need to be performed to further refine the improvements and right-of-way requirements.



K-7 ROW ~ 495'

K-7 ROW ~ 500'

LONE ELM

159TH ST



Legend			
	New Arterial		Existing Arterial
	New Collector		Existing Collector
	K-7 Mainline and Ramps		City/County Boundary
	Proposed K-7 Right of Way		Property Lines
	Overpass		

**HNTB**

**K-7 CORRIDOR STUDY**  
 I-35 Interchange  
 Plate No. B-10  
 Date of Aerials: 2010 June 2015