








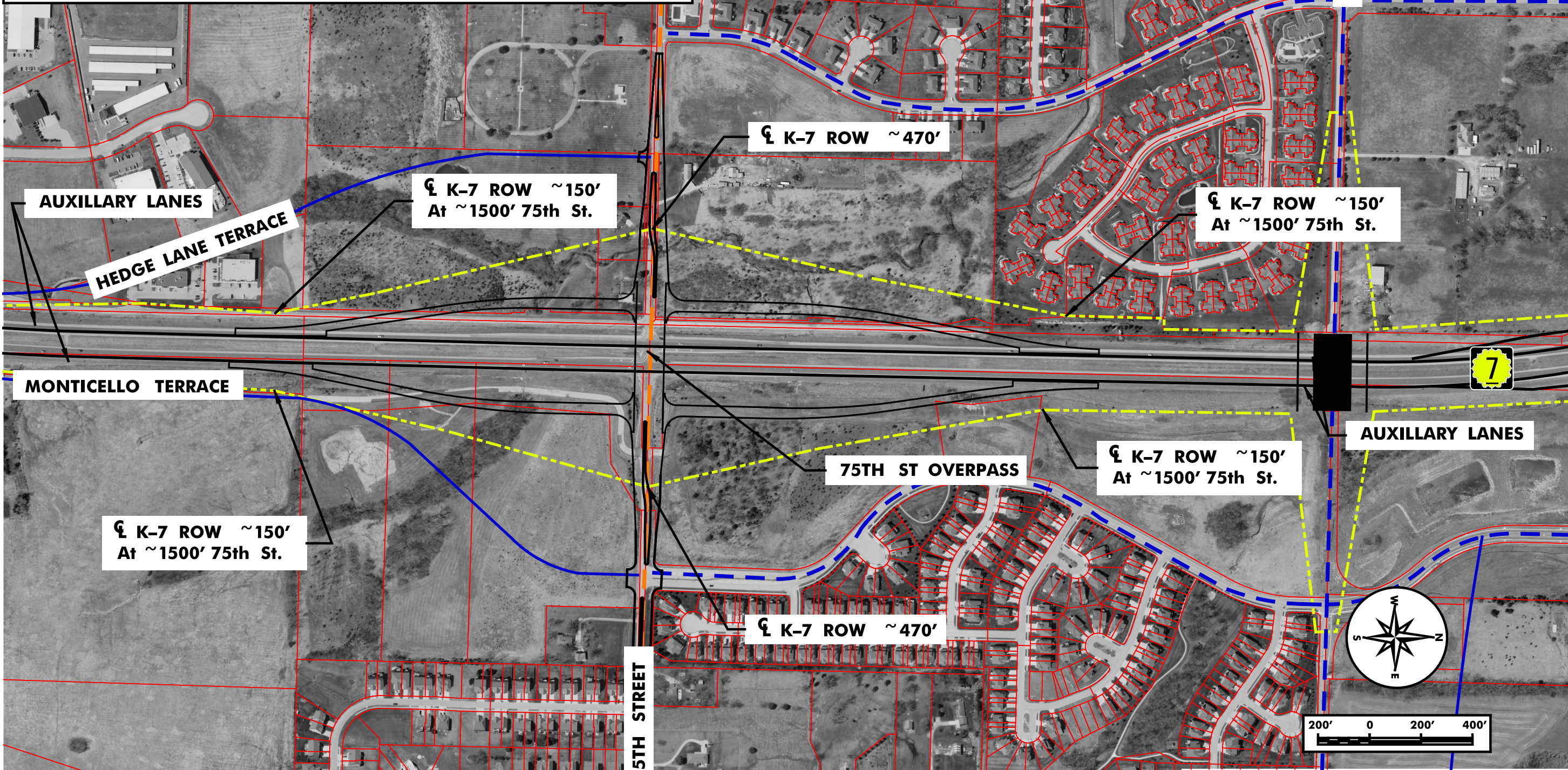


- | Legend | | | |
|---|----------------------------|---|----------------------|
|  | New Arterial |  | Existing Arterial |
|  | New Collector /Access Road |  | Existing Collector |
|  | K-7 Mainline and Ramps |  | City/County Boundary |
|  | Proposed K-7 Right of Way |  | Property Lines |
|  | Overpass | | |



GBA GEORGE BUTLER ASSOCIATES, INC.
Engineers · Architects

DISCLAIMER:
These concepts are current as of May, 2013 and depict KDOT's recommended improvements for K-7 and the local street network from Spring Hill to Leavenworth. Modifications have been made to GBA's original plate by HNTB as part of KDOT's Rapid Response Work Order process. The exact location, design, and right-of way for this project cannot be determined from these concepts and could be different from that shown. Additional preliminary design will need to be performed to further refine the improvements and right-of-way requirements.

K-7 CORRIDOR STUDY
75th Street
Plate No. B-23
Date of Aerials: 2010 June 2015