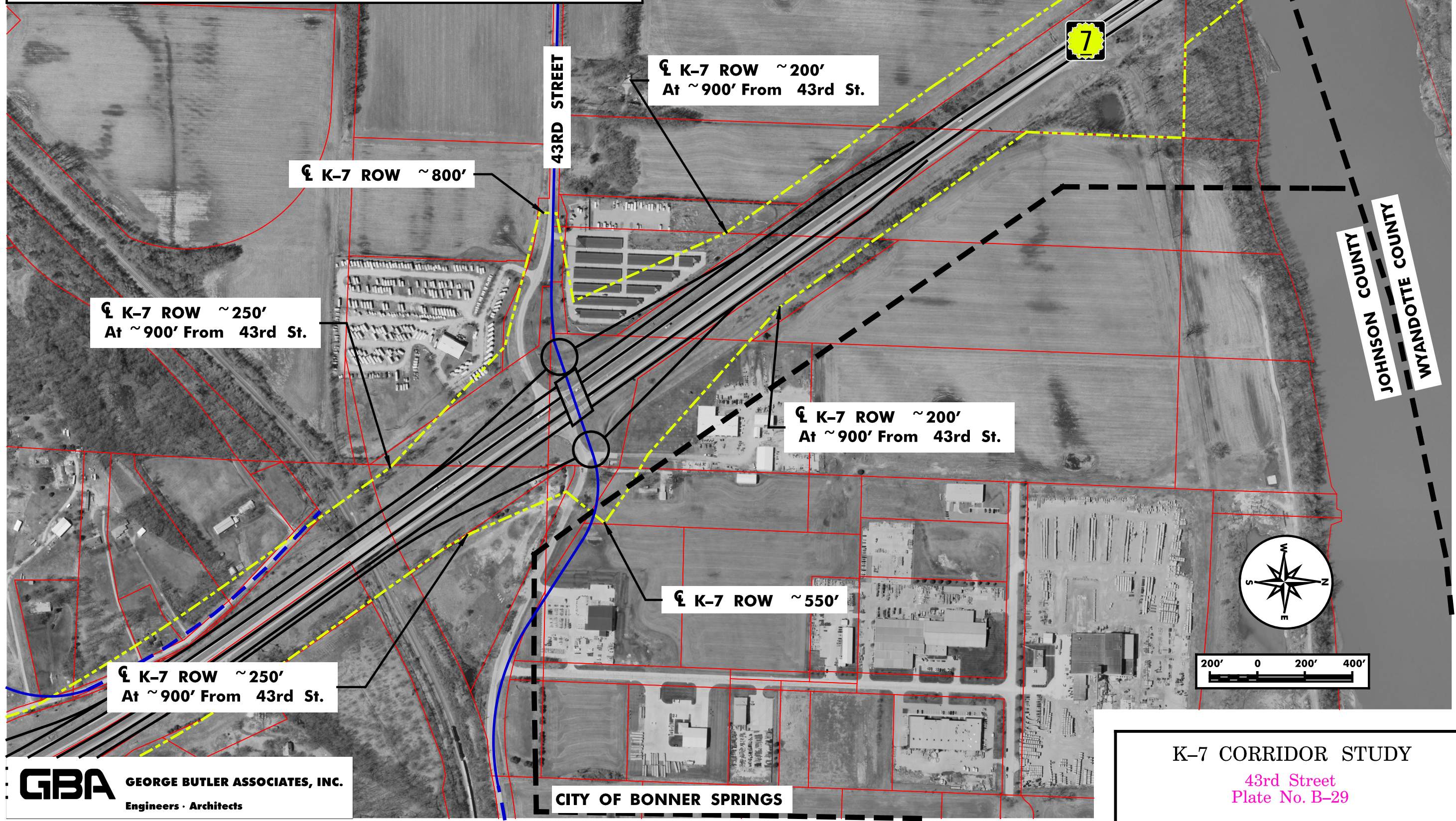


Legend

- New Arterial
- New Collector /Access Road
- K-7 Mainline and Ramps
- Proposed K-7 Right of Way
- Overpass
- Existing Arterial
- Existing Collector
- City/County Boundary
- Property Lines

DISCLAIMER:
 These concepts are current as of May, 2013 and depict KDOT's recommended improvements for K-7 and the local street network from Spring Hill to Leavenworth. Modifications have been made to GBA's original plate by HNTB as part of KDOT's Rapid Response Work Order process. The exact location, design, and right-of way for this project cannot be determined from these concepts and could be different from that shown. Additional preliminary design will need to be performed to further refine the improvements and right-of-way requirements.



☒ K-7 ROW ~ 800'

☒ K-7 ROW ~ 200'
At ~ 900' From 43rd St.

☒ K-7 ROW ~ 250'
At ~ 900' From 43rd St.

☒ K-7 ROW ~ 200'
At ~ 900' From 43rd St.

☒ K-7 ROW ~ 550'

☒ K-7 ROW ~ 250'
At ~ 900' From 43rd St.

GBA GEORGE BUTLER ASSOCIATES, INC.
Engineers · Architects

CITY OF BONNER SPRINGS

K-7 CORRIDOR STUDY

43rd Street
Plate No. B-29

Date of Aerials: 2010

June 2015