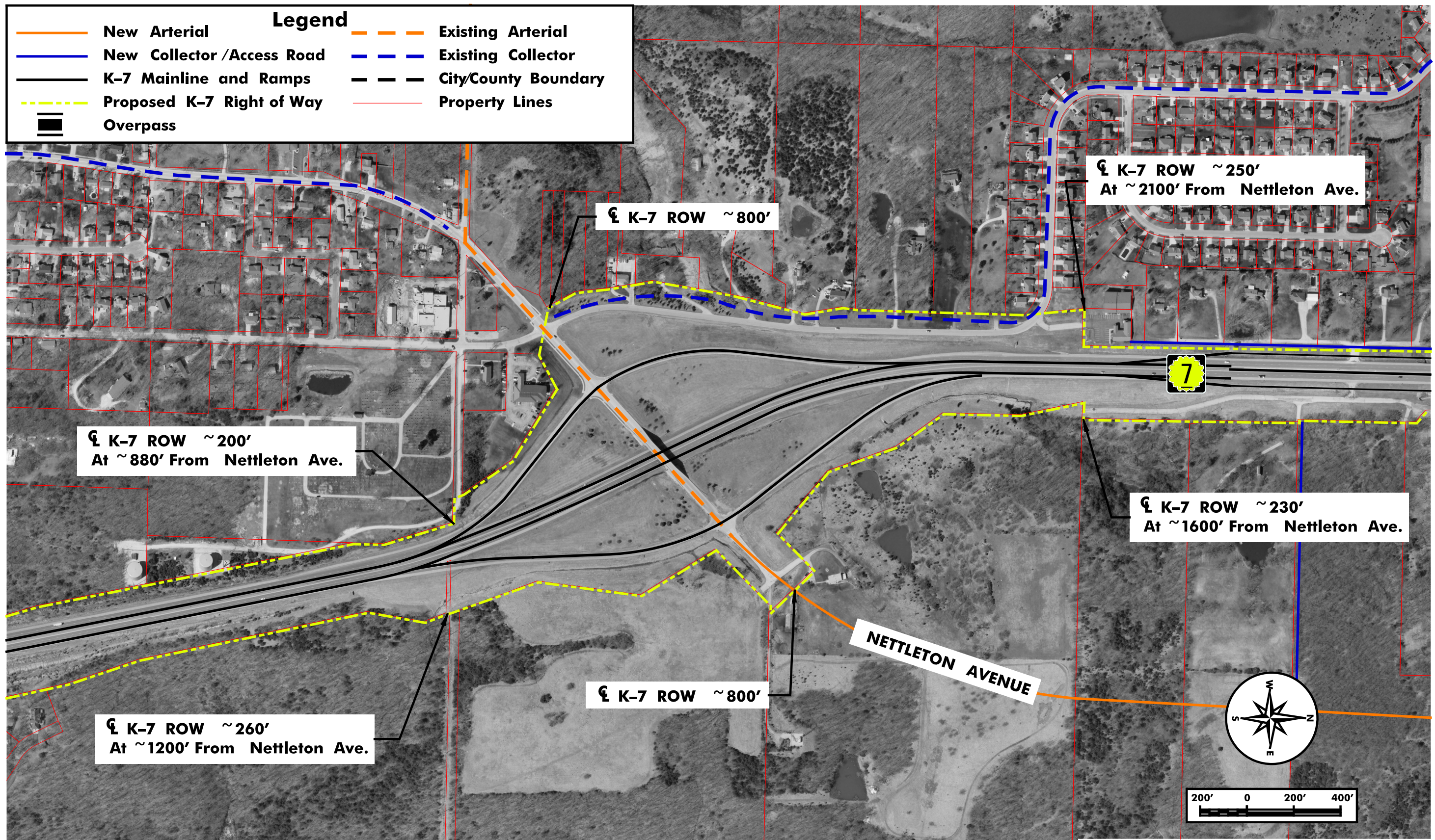


Legend			
	New Arterial		Existing Arterial
	New Collector /Access Road		Existing Collector
	K-7 Mainline and Ramps		City/County Boundary
	Proposed K-7 Right of Way		Property Lines
	Overpass		



☪ K-7 ROW ~ 200'  
At ~ 880' From Nettleton Ave.

☪ K-7 ROW ~ 800'

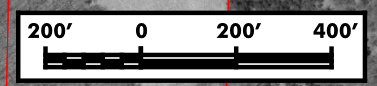
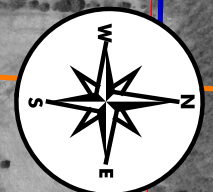
☪ K-7 ROW ~ 250'  
At ~ 2100' From Nettleton Ave.

☪ K-7 ROW ~ 230'  
At ~ 1600' From Nettleton Ave.

☪ K-7 ROW ~ 800'

☪ K-7 ROW ~ 260'  
At ~ 1200' From Nettleton Ave.

NETTLETON AVENUE



**GBA** GEORGE BUTLER ASSOCIATES, INC.  
Engineers · Architects

**DISCLAIMER:**  
These concepts are current as of May, 2013 and depict KDOT's recommended improvements for K-7 and the local street network from Spring Hill to Leavenworth. Modifications have been made to GBA's original plate by HNTB as part of KDOT's Rapid Response Work Order process. The exact location, design, and right-of way for this project cannot be determined from these concepts and could be different from that shown. Additional preliminary design will need to be performed to further refine the improvements and right-of-way requirements.

**K-7 CORRIDOR STUDY**  
Nettleton Avenue  
Plate No. B-31  
Date of Aerials: 2010 June 2015