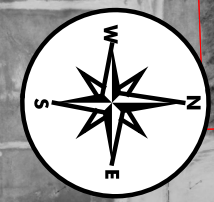
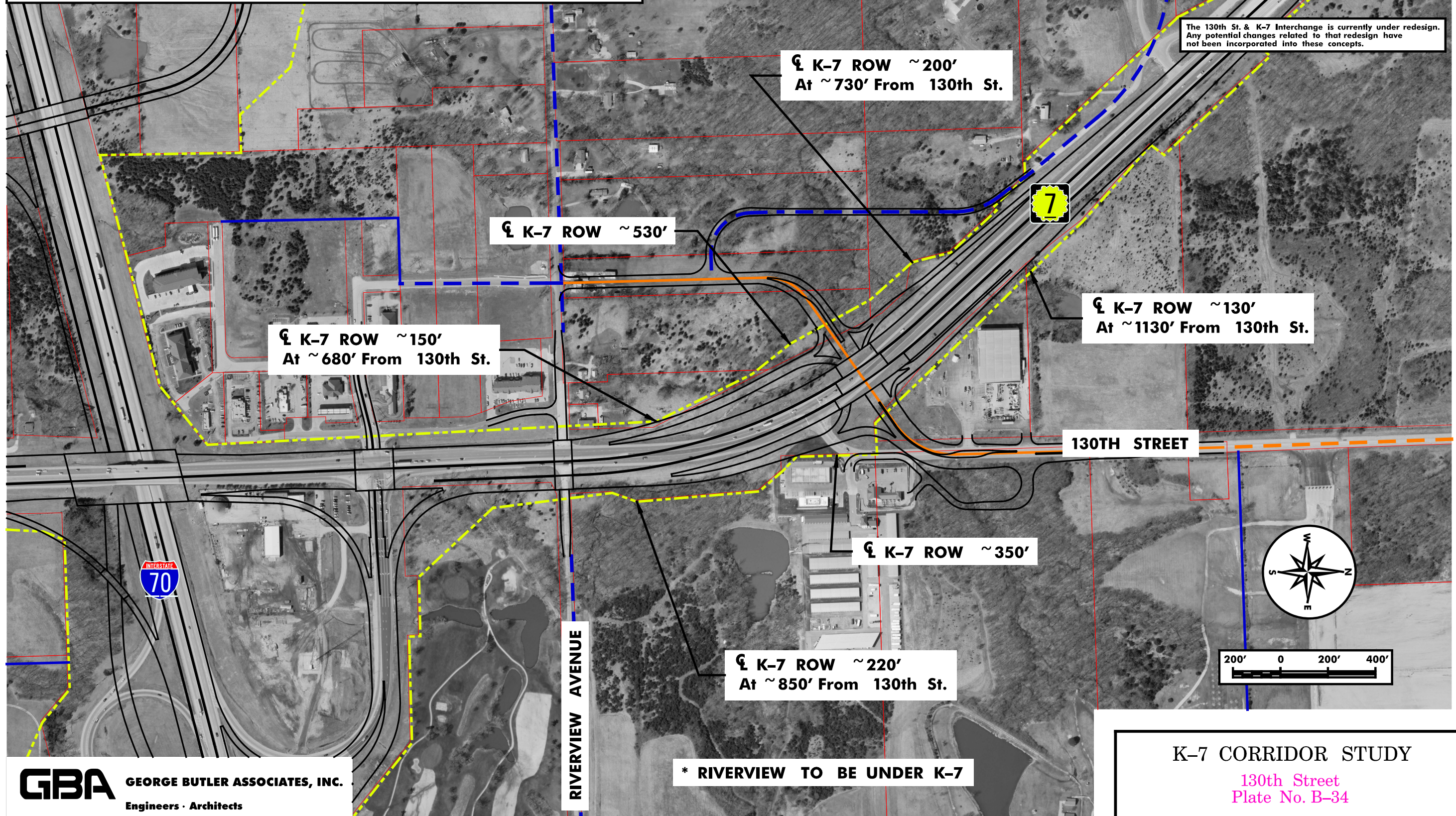


Legend

- New Arterial
- New Collector / Access Road
- K-7 Mainline and Ramps
- Proposed K-7 Right of Way
- Overpass
- Existing Arterial
- Existing Collector
- City/County Boundary
- Property Lines

DISCLAIMER:
 These concepts are current as of May, 2013 and depict KDOT's recommended improvements for K-7 and the local street network from Spring Hill to Leavenworth. Modifications have been made to GBA's original plate by HNTB as part of KDOT's Rapid Response Work Order process. The exact location, design, and right-of-way for this project cannot be determined from these concepts and could be different from that shown. Additional preliminary design will need to be performed to further refine the improvements and right-of-way requirements.

The 130th St. & K-7 Interchange is currently under redesign. Any potential changes related to that redesign have not been incorporated into these concepts.



* RIVERVIEW TO BE UNDER K-7

GBA GEORGE BUTLER ASSOCIATES, INC.
 Engineers · Architects

K-7 CORRIDOR STUDY
 130th Street
 Plate No. B-34
 Date of Aerials: 2010 June 2015