

South Central District Office
500 N. Hendricks
Hutchinson, KS 67504-0769



phone: 620-663-3361
fax: 620-663-1804
www.ksdot.org

Julie Lorenz, Secretary

Laura Kelly, Governor

IMMEDIATE RELEASE

Sept. 14, 2022

For more information: Tim Potter

620-860-7389; mobile: 620-727-2278; Tim.Potter@ks.gov

Road changes coming as part of K-14 realignment near Nickerson

One permanent road reopening and two permanent road closures will occur around Friday, Sept. 23, east of Nickerson for the Reno County portion of the K-14 realignment project.

West 82nd Avenue between Dean and Herren roads will reopen to traffic. That section has been closed for about a year to allow for construction of the ongoing K-14 realignment.

Regarding the upcoming permanent closures, one closure will be on West 95th Avenue between Herren and North Riverton roads. The second closure will be on Herren Road between West 95th and 82nd.

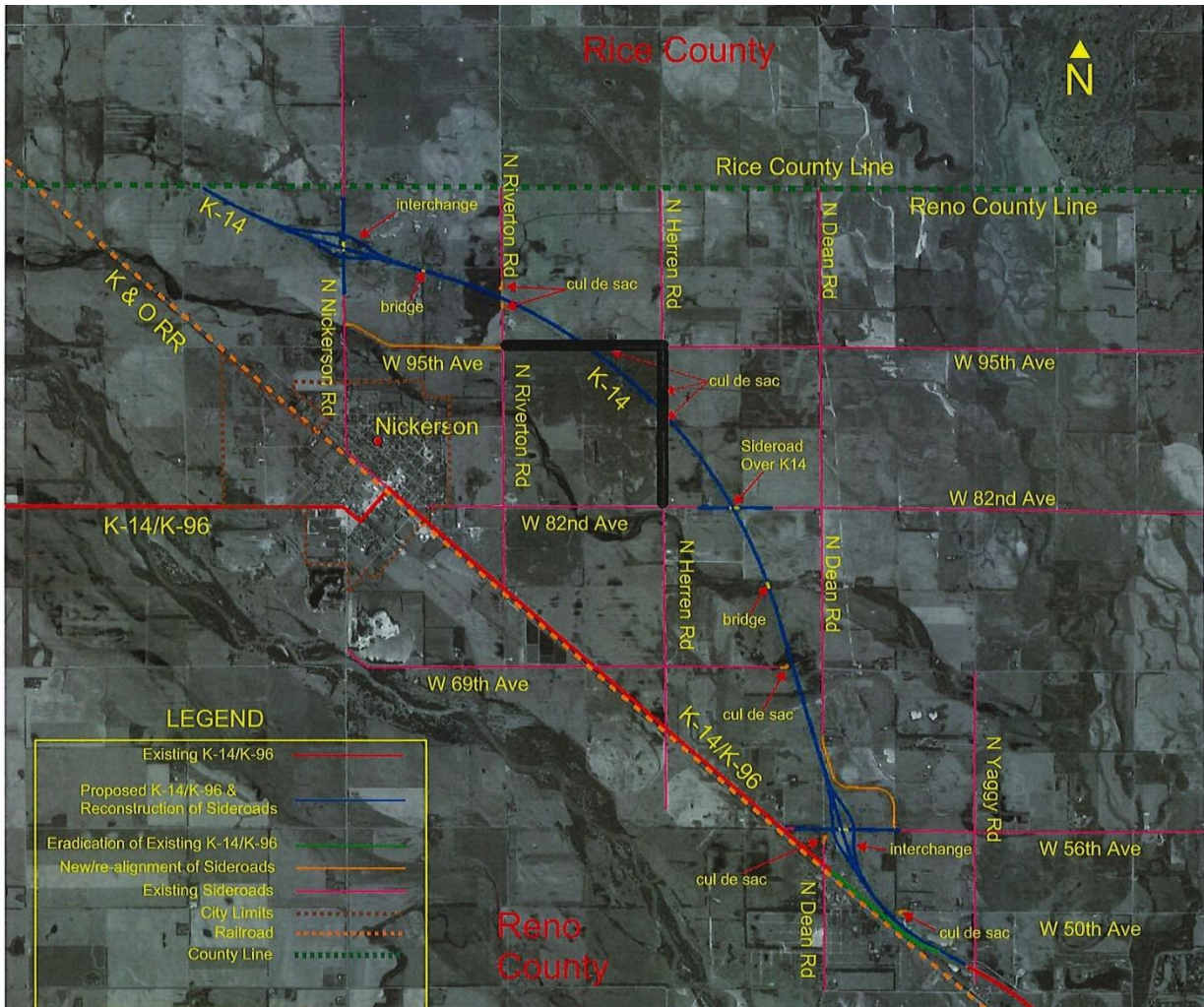
The map below shows the closures on 95th and on Herren, outlined with thick black lines.

Background: This Kansas Department of Transportation realignment project started in the spring of 2021. This a 15-mile, \$81.7 million realignment of K-14. The work stretches from Hutchinson, to Nickerson, to Sterling. The project is expected to be completed by June 16, 2023. Bob Bergkamp Construction Co. Inc., of Wichita, is the primary contractor.

During the work, traffic will continue to use the existing K-14/96 alignment in Reno and Rice counties.

The Reno County portion of the realignment will be from about 4.5 miles southeast of Nickerson northwest to the Reno/Rice county line. The length is a little over 7 miles.

The Rice County portion of the realignment will be from the Reno/Rice county line to just north of the K-96/Avenue T junction. The length is about 8 miles.



####

This information can be made available in alternative accessible formats upon request.

For information about obtaining an alternative format, contact the KDOT Division of Communications, 700 SW Harrison St., 2nd Fl West, Topeka, KS 66603-3745 or phone 785-296-3585 (Voice)/Hearing Impaired – 711.

Click below to connect to KDOT's Social Networks:

