

South Central District Office  
500 N. Hendricks  
Hutchinson, KS 67504-0769



phone: 620-663-3361  
fax: 620-663-1804  
[www.ksdot.org](http://www.ksdot.org)

Julie Lorenz, Secretary

Laura Kelly, Governor

IMMEDIATE RELEASE

July 6, 2022

For more information: Tim Potter

620-860-7389; mobile: 620-727-2278; [Tim.Potter@ks.gov](mailto:Tim.Potter@ks.gov)

### **Part of 19<sup>th</sup> Road near Sterling permanently closing for new K-14**

As part of continuing construction of the new K-14 realignment, a section of 19<sup>th</sup> Road between Avenue V and Avenue W east of Sterling will be permanently closed on Monday, July 11.

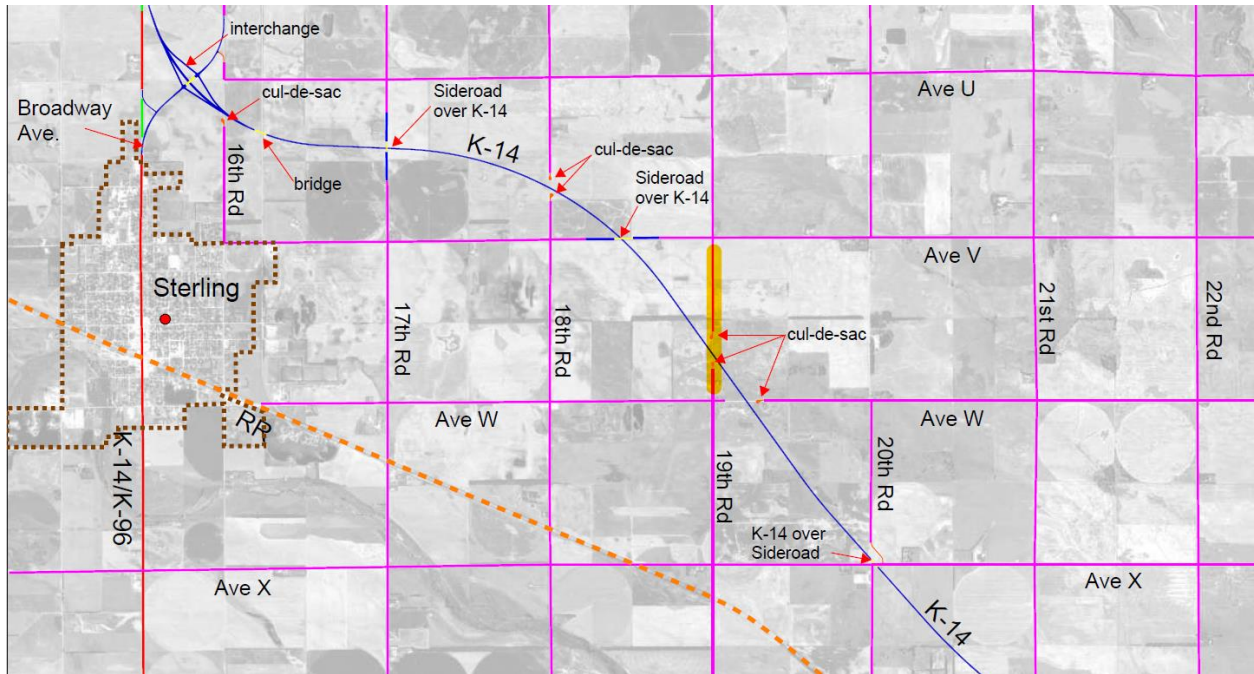
Along with the closure, cul de sacs will be built on 19<sup>th</sup> Road. The map below shows the section affected by the closure, highlighted in yellow, and cul de sac locations. The blue line shows the route of the new K-14 alignment in Rice County.

**Background:** This Kansas Department of Transportation realignment project started in the spring of 2021. This a 15-mile, \$81.7 million realignment of K-14. The work stretches from Hutchinson, to Nickerson, to Sterling. The project is expected to be completed by June 16, 2023. Bob Bergkamp Construction Co. Inc., of Wichita, is the primary contractor.

During the work, traffic will continue to use the existing K-14/96 alignment in Reno and Rice counties.

The Reno County portion of the realignment will be from about 4.5 miles southeast of Nickerson northwest to the Reno/Rice county line. The length is a little over 7 miles.

The Rice County portion of the realignment will be from the Reno/Rice county line to just north of the K-96/Avenue T junction. The length is about 8 miles.



####

This information can be made available in alternative accessible formats upon request.

For information about obtaining an alternative format, contact the KDOT Division of Communications, 700 SW Harrison St., 2<sup>nd</sup> Fl West, Topeka, KS 66603-3754 or phone 785-296-3585 (Voice)/Hearing Impaired – 711.

Click below to connect to KDOT's Social Networks:

