

South Central District Office
500 N. Hendricks
Hutchinson, KS 67504-0769



phone: 620-860-7400
fax: 620-663-1804
www.ksdot.gov

Calvin Reed, Acting Secretary of Transportation

Laura Kelly, Governor

IMMEDIATE RELEASE

June 21, 2023

For more information: Tim Potter

620-860-7389; mobile: 620-727-2278; Tim.Potter@ks.gov

U.S 50 passing lane extension work starting soon at Harvey/Marion line

A nearly \$7.5 million project to extend passing lanes on U.S. 50 at the Harvey/Marion county line is expected to begin Monday, June 26.

The Kansas Department of Transportation project is expected to be completed in June of 2024.

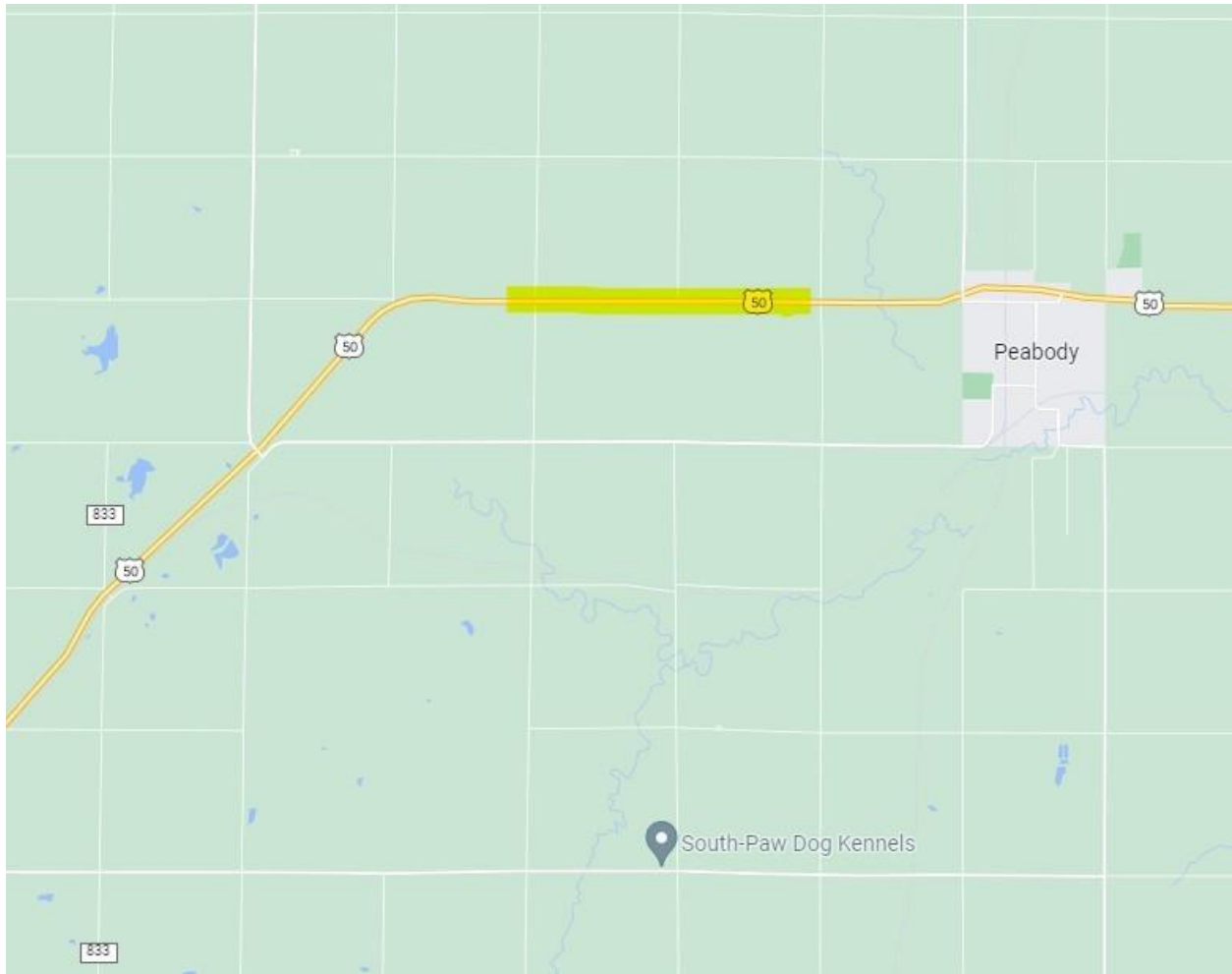
The project will extend passing lanes in Marion County to the west into Harvey County for 1.3 miles.

During the work, motorists will be directed to drive at a reduced speed through the work zone.

Bettis Asphalt & Construction Inc., of Topeka, is the primary contractor for the \$7,465,230 project.

The map below shows the approximate project location, shaded in yellow.

For updated information on this and other KDOT highway projects and road conditions across the state, go to www.kandrive.org.



###

This information can be made available in alternative accessible formats upon request.

For information about obtaining an alternative format, contact the KDOT Communications Division,
700 SW Harrison St., 2nd Fl West, Topeka, KS 66603-3745 or phone 785-296-3585 (Voice)/Hearing Impaired – 711.

Click below to connect to KDOT's Social Networks:

