

Southeast District Office
411 W. Fourteenth
Chanute, KS 66720-2894



phone: 620-431-1000
fax: 620-431-4406
www.ksdot.org

Julie Lorenz, Secretary

Laura Kelly, Governor

IMMEDIATE RELEASE

June 30, 2021

Contact: Priscilla Petersen, (620) 902-6433; priscilla.petersen@ks.gov

U.S. 169 to close north of K-47 in early July

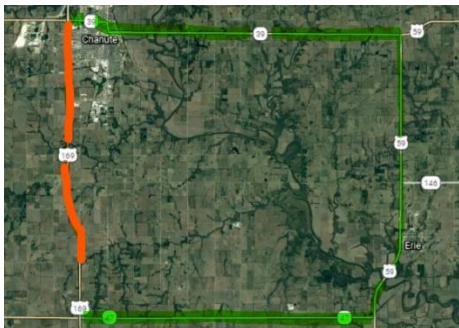
The Kansas Department of Transportation (KDOT) plans to close U.S. 169 north of K-47 the week following the July 4 holiday. The closure runs from 130th Street north to 35th Street at Chanute.

The closure is part of the 13-mile U.S. 169 pavement reconstruction project in Neosho and Allen counties. Traffic should follow the signed state route detour on K-47, U.S. 59, and K-39 (see map). KDOT expects this section to be completed and reopened to traffic by the end of 2021.

During the second project phase, starting early next year, U.S. 169 will be closed to through traffic from K-39 at Chanute north to 1.7 miles north of the Neosho-Allen county line. The state route detour for the second phase will be signed on U.S. 54, U.S. 75, and K-39. The entire project should be finished by mid-November 2022.

KDOT awarded the \$32.6 million construction contract to Emery Sapp & Sons, Inc., of Kansas City, Mo. Persons with questions may contact Geryd Erbele, (620) 577-7314, or Priscilla Petersen, (620) 902-6433. For updated information about U.S. 169 project and other KDOT projects, go to www.kandrive.org.

Map:



U.S. 169 closure in red. State detour in green.

###

This information can be made available in alternative accessible formats upon request.

For information about obtaining an alternative format, contact the KDOT Division of Communications, 700 SW Harrison St., 2nd Fl West, Topeka, KS 66603-3754 or phone 785-296-3585 (Voice)/Hearing Impaired – 711.

Click below to connect to KDOT's Social Networks:

