

Southeast District Office
411 W. Fourteenth
Chanute, KS 66720-2894



phone: 620-902-6400
fax: 620-431-4406
www.ksdot.org

Julie Lorenz, Secretary

Laura Kelly, Governor

IMMEDIATE RELEASE

Sept. 21, 2022

Contact: Priscilla Petersen, (620) 902-6433; priscilla.petersen@ks.gov

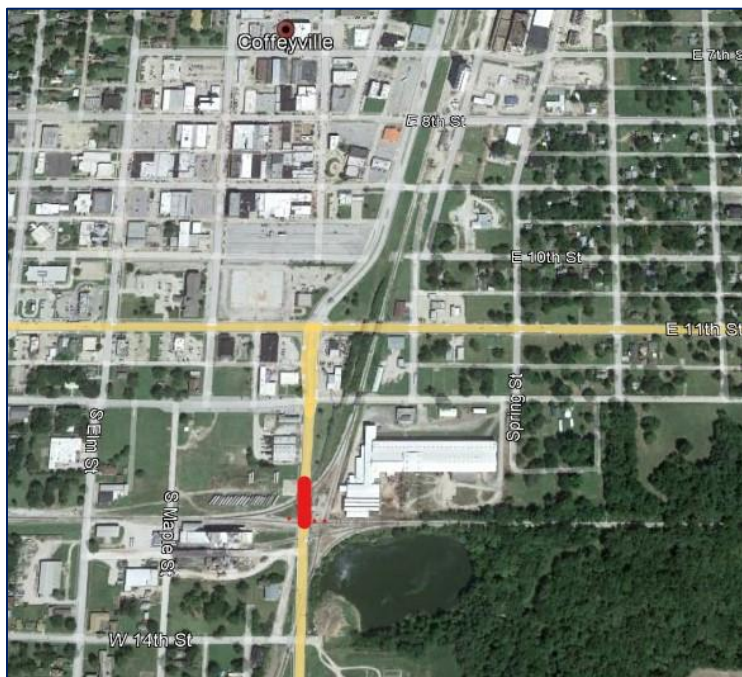
Railroad crossing at Coffeyville to close for repairs

The South Kansas & Oklahoma (SKOL) Railroad plans to repair its crossing on U.S. 169 at Coffeyville on Tuesday and Wednesday, Sept. 27-28. The crossing is south of U.S. 166 (11th Street).

U.S. 169 will be closed at the crossing. Traffic will follow a signed detour on city streets. For more information on this closure go to www.kandrive.org.

Persons with questions may call Kansas Department of Transportation (KDOT) Superintendent Marcus Leck at (620) 577-7313 or Public Affairs Manager Priscilla Petersen at (620) 902-6433.

Map:



###

This information can be made available in alternative accessible formats upon request.

For information about obtaining an alternative format, contact the KDOT Division of Communications, 700 SW Harrison St., 2nd Fl West, Topeka, KS 66603-3745 or phone 785-296-3585 (Voice)/Hearing Impaired – 711.

Click below to connect to KDOT's Social Networks:

