

Southwest District Office
121 N. Campus Drive
Garden City, KS 67846



phone: 620-276-3241
fax: 620-276-2333
www.ksdot.org

Julie Lorenz, Secretary

Laura Kelly, Governor

June 25, 2021
Lisa Knoll
620.765.7080
lisa.knoll@ks.gov

Survey work to begin in Ford County

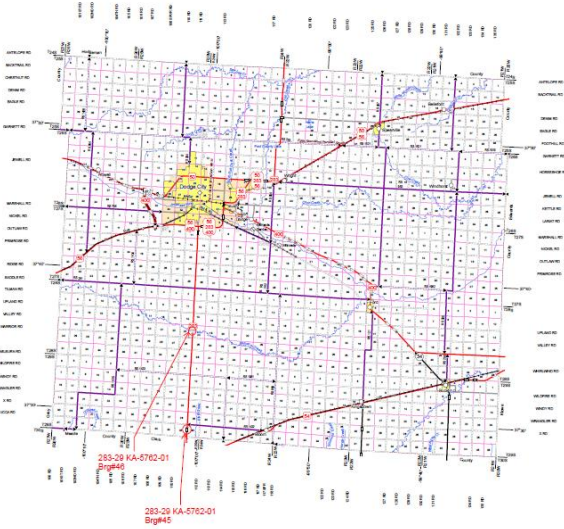
Survey work for a proposed bridge replacement in Ford County is expected to begin Monday, June 28, according to the Kansas Department of Transportation.

The areas being surveyed include the Sinkhole Drainage bridge located on U.S. 283 approximately ½ mile north of the Clark County Line and the Mulberry Creek bridge on U.S. 283 approximately 8.5 miles north of the Clark County Line.

Michael Small with MKEC will lead these surveys for the Kansas Department of Transportation. Work is expected to be completed by August 23, 2021.

A member of the survey crew will first contact property owners and/or tenants for permission to enter private property. Survey activities will include the use of survey instruments on the ground to determine locations of existing features within the survey corridor.

The map below shows the project location marked by red arrows.



###

This information can be made available in alternative accessible formats upon request. For information about obtaining an alternative format, contact the KDOT Division of Communications, 700 SW Harrison St., 2nd Fl West, Topeka, KS 66603-3754 or phone 785-296-3585 (Voice)/Hearing Impaired – 711.

###

Click below to connect to KDOT's Social Networks:

