

North Central District Office  
1006 N. Third, P.O. Box 857  
Salina, KS 67402-0857



phone: 785-823-3754  
fax: 785-823-1649  
[www.ksdot.org](http://www.ksdot.org)

Mike King, Secretary

Sam Brownback, Governor

## FOR IMMEDIATE RELEASE

Sept. 12, 2013

**News contact:** David Greiser, (785) 823-3754;  
[dgreiser@ksdot.org](mailto:dgreiser@ksdot.org)

## Survey Scheduled for US-81 in Republic County

Surveyors will soon be conducting work on US-81 in preparation for potential traffic cross-over and roadway improvements. The survey will take place at three locations in Republic County. The locations are the US-36/US-81 Interchange, 3 miles south of US-36 and north of 12<sup>th</sup> St in Bellville. The field survey is scheduled to begin Monday, Sept. 16<sup>th</sup> and will be completed by the end of October weather permitting.

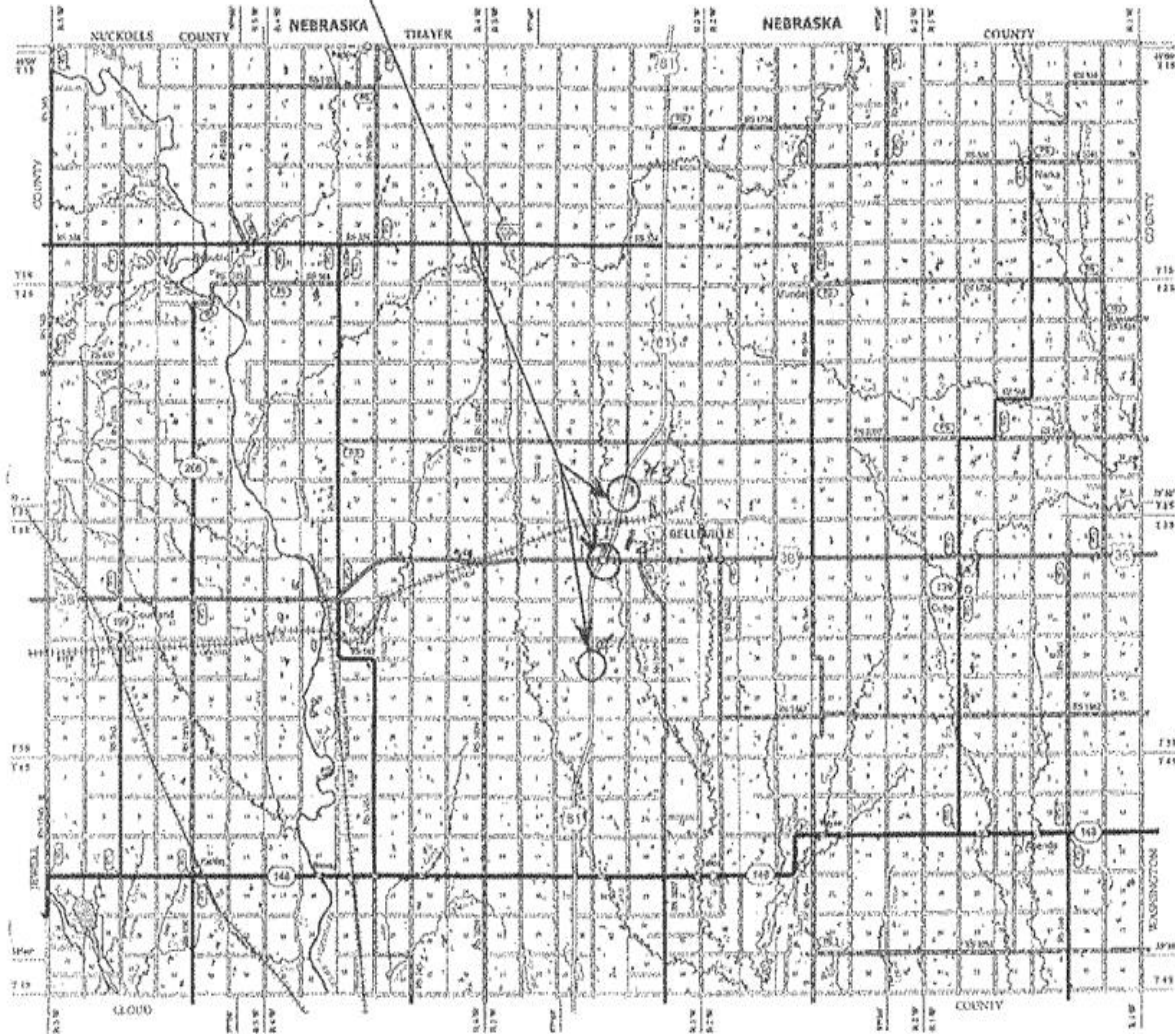
A member of the survey crew will first contact property owners and/or tenants for permission prior to entering private property. Survey activities will include the use of survey instruments on the ground to determine locations of existing features within the survey corridor.

Joe Bowen, L.S., Field Survey Project Manager, will be in charge of this survey for the KDOT.

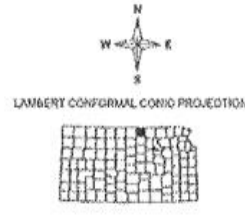
This project is funded through T-WORKS. For more information concerning the T-works program and specific projects visit the T-works web site at [www.ksdot.org/tworks](http://www.ksdot.org/tworks).

#####

Project 81 - 79 KA 3237 - 01



ROAD AND POISSONLY FEATURES	ROAD SYSTEM DESIGNATION
Controlled Access - Interstate	Interstate Highway
Controlled Access - Interstate	Interstate Highway
US Route - Controlled Access	US Highway
US Route - Divided	US Highway
US Route - Undivided	US Highway
State Route - Controlled Access	State Highway
State Route - Divided	State Highway
State Route - Undivided	State Highway
US Route - Divided	US Highway
US Route - Undivided	US Highway
State Route - Divided	State Highway
State Route - Undivided	State Highway
Minor Road - Divided	Minor Road
Minor Road - Undivided	Minor Road
State Route - Divided	State Highway
State Route - Undivided	State Highway



GENERAL HIGHWAY MAP  
**REPUBLIC COUNTY**  
 KANSAS

PREPARED BY THE  
 KANSAS DEPARTMENT OF TRANSPORTATION  
 BUREAU OF TRANSPORTATION PLANNING

IN COOPERATION WITH THE  
 U.S. DEPARTMENT OF TRANSPORTATION  
 FEDERAL HIGHWAY ADMINISTRATION

Miles  
 0 1 2 3 4

DECEMBER 2011

COMPUTER GENERATED

This information can be made available in alternative accessible formats upon request.

For information about obtaining an alternative format, contact the Bureau of Transportation Information, 700 SW Harrison St., 2<sup>nd</sup> Fl West, Topeka, KS 66603-3754 or phone 785-296-3585 (Voice)/Hearing Impaired – 711.

Click below to connect to Social Networks:

