

Northeast District Office  
121 S.W. 21st Street  
Topeka, KS 66612-1429



phone: 785-296-3881  
fax: 785-296-3720  
[www.ksdot.gov](http://www.ksdot.gov)

Calvin Reed, Acting Secretary of Transportation

Laura Kelly, Governor

## IMMEDIATE RELEASE

April 19, 2023

### For more information:

Kate Craft

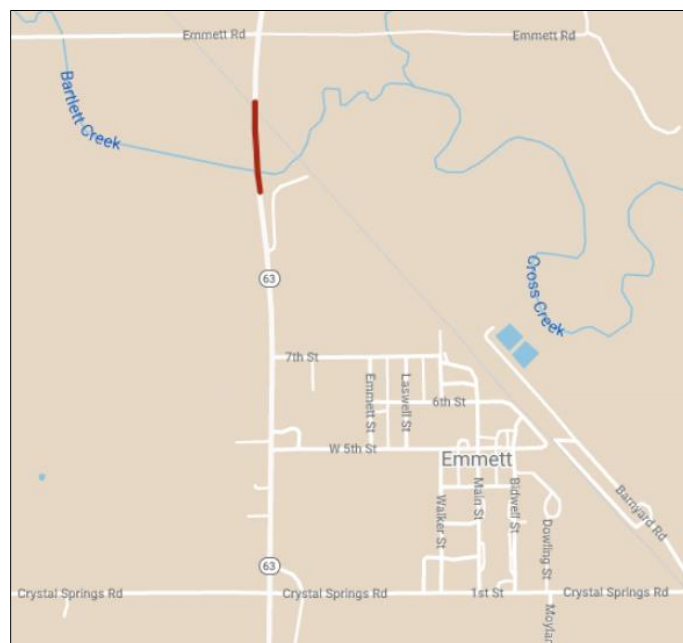
[Kate.Craft@ks.gov](mailto:Kate.Craft@ks.gov)

## K-63 to be reduced next week in Pottawatomie County

Part of K-63 in Pottawatomie County will be reduced to one lane and controlled by temporary traffic signals next week while pothole patching is completed on the bridge deck over Bartlett Creek just north of Emmett. Kansas Department of Transportation maintenance crews will start work at 7 a.m. on Monday, April 24, and continue daily through Friday, April 28, weather permitting.

Crews will be working during daytime hours, but the temporary traffic signals will be in use for the duration of the repair project. Drivers should plan for delays of up to 10 minutes. There will also be an 11-foot width restriction through the work zone.

KDOT urges all motorists to be alert and obey the warning signs when approaching and driving through a highway work zone. To stay aware of highway construction projects across Kansas, go to [www.kandrive.org](http://www.kandrive.org) or call 5-1-1.



###

This information can be made available in alternative accessible formats upon request. For information about obtaining an alternative format, contact the KDOT Division of Communications, 700 SW Harrison St., 2<sup>nd</sup> Fl. West, Topeka, KS 66603-3745 or phone 785-296-3585 (Voice)/Hearing Impaired – 711.

**Click below to connect to KDOT's Social Networks:**

