

FOR IMMEDIATE RELEASE

May 4, 2013

News Contact: Kimberly Qualls, (785) 640-9340 or kqualls@ksdot.org
Nathan Jeffries, (785) 842-0299 or nathanj@ksdot.org

Old U.S. 59 Bridge Replacement Project to Begin in Douglas County

On **Wednesday, May 8, weather permitting**, a replacement project will begin on an Old U.S. 59 Bridge located less than a mile north of Pleasant Gove Hill in Douglas County. Project work includes bridge replacement, grading and surfacing work. Work will take place primarily Monday-Friday during daylight hours with some occasional Saturday work.

Beginning on **Wednesday, May 8**, northbound and southbound E 1300 Road from N 1000 Road to N 650 Road will be closed to all through traffic throughout the project duration. No marked detour will be provided. Advance message boards will alert traffic to the roadway closure. *(See aerial map below for project location.)*

Drivers should expect minor delays and must use alternate routes throughout the duration of the project. Updated traffic information for this project can be viewed online at: www.ksdot.org/topekametro/laneclose.asp.

The Kansas Department of Transportation urges all motorists to be alert, obey the warning signs, and “Give ‘Em a Brake!” when approaching and driving through the project work zone.

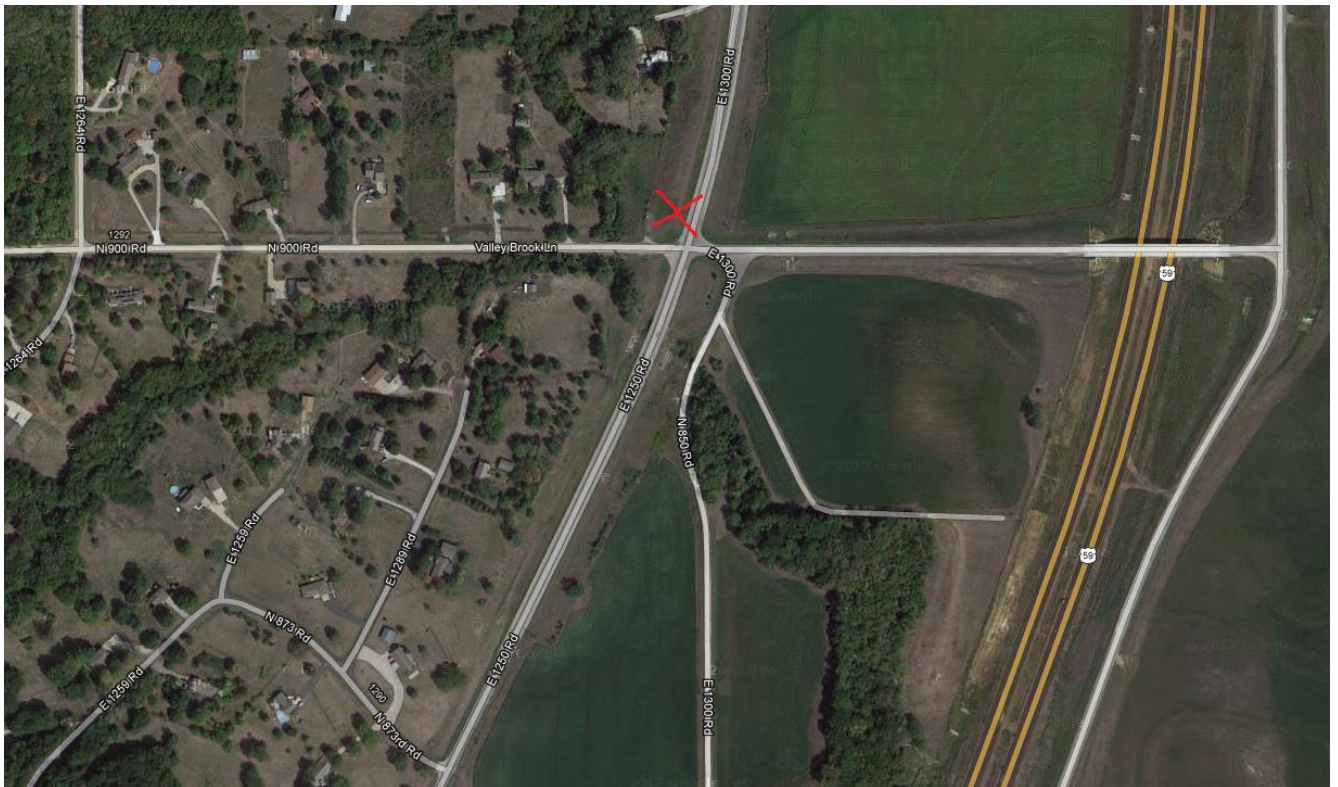
Bryan Ohlmeier Construction Co. (Paola, KS) is the primary contractor on this bridge replacement project with a total contract cost of \$333,000. **The scheduled completion date for the bridge replacement project is mid- to late August 2013, weather permitting.**

This project is funded by T-WORKS, the transportation program passed by the Kansas Legislature in May 2010. Find out more about this and other T-WORKS projects at: <http://kdotapp.ksdot.org/TWorks/>.

For more information on this bridge replacement project please contact Kimberly Qualls, Northeast Kansas Public Affairs Manager, at (785) 640-9340, or Nathan Jeffries, Construction Manager, at (785) 842-0299. (KDOT Project # 59-23 K-6813-01)

###

This information is available in alternative accessible formats. To obtain an alternative format, contact KDOT Transportation Information, Eisenhower Building, 700 SW Harrison, 2nd Floor West, Topeka, Kan., 66603-3754, or (785) 296-3585 (Voice)/Hearing Impaired - 711.



Click below to connect to KDOT's Social Networks:

