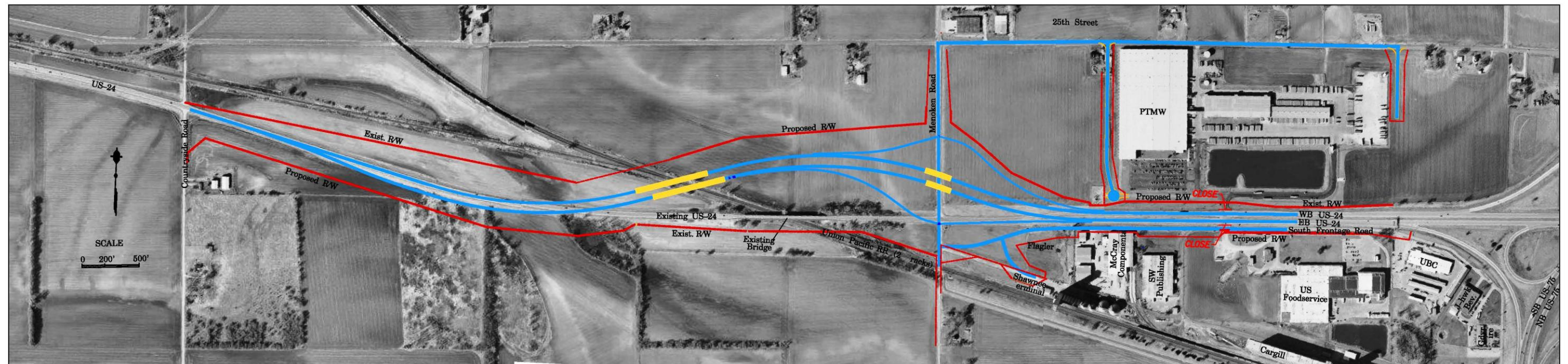


Kansas Department of Transportation  
Project No. 24-89 K-7431-01  
Shawnee County



This illustration depicts the location and design concept for improvements to US-24 between Countryside Road and the four-lane section east of Menoken Road. The final location, design, and right-of-way needs cannot be determined from this drawing and may vary from those shown. KDOT makes no warranties, guarantees, or representations for accuracy of this information and assumes no liability for errors or omissions. This illustration is current as of April 27, 2012. The aerial photograph is current as of March 2006.