

NEWS RELEASE

Kansas Department of Transportation News Release

April 9, 2010

010-023-01 (REVISED)

FOR IMMEDIATE RELEASE

News Contact: Kimberly Qualls, (785) 640-9340 or kqualls@ksdot.org
Michelle Anschutz (785) 486-2142 or michelle@ksdot.org

US-59 & 4th Street Intersection Project to Begin in Atchison County

Weather permitting, beginning on **Monday, April 12 at 9:00 a.m.**, an intersection reconstruction project will begin at US-59 and 4th Street in Atchison/Atchison County. 4th Street just south of US-59 will be closed for intersection realignment work as part of the new Amelia Earhart Memorial Bridge replacement project. Crews will work during daylight hours, Monday through Friday. *(This project was scheduled to begin on Friday, April 9, but due to project delays was rescheduled for Monday, April 12.)*

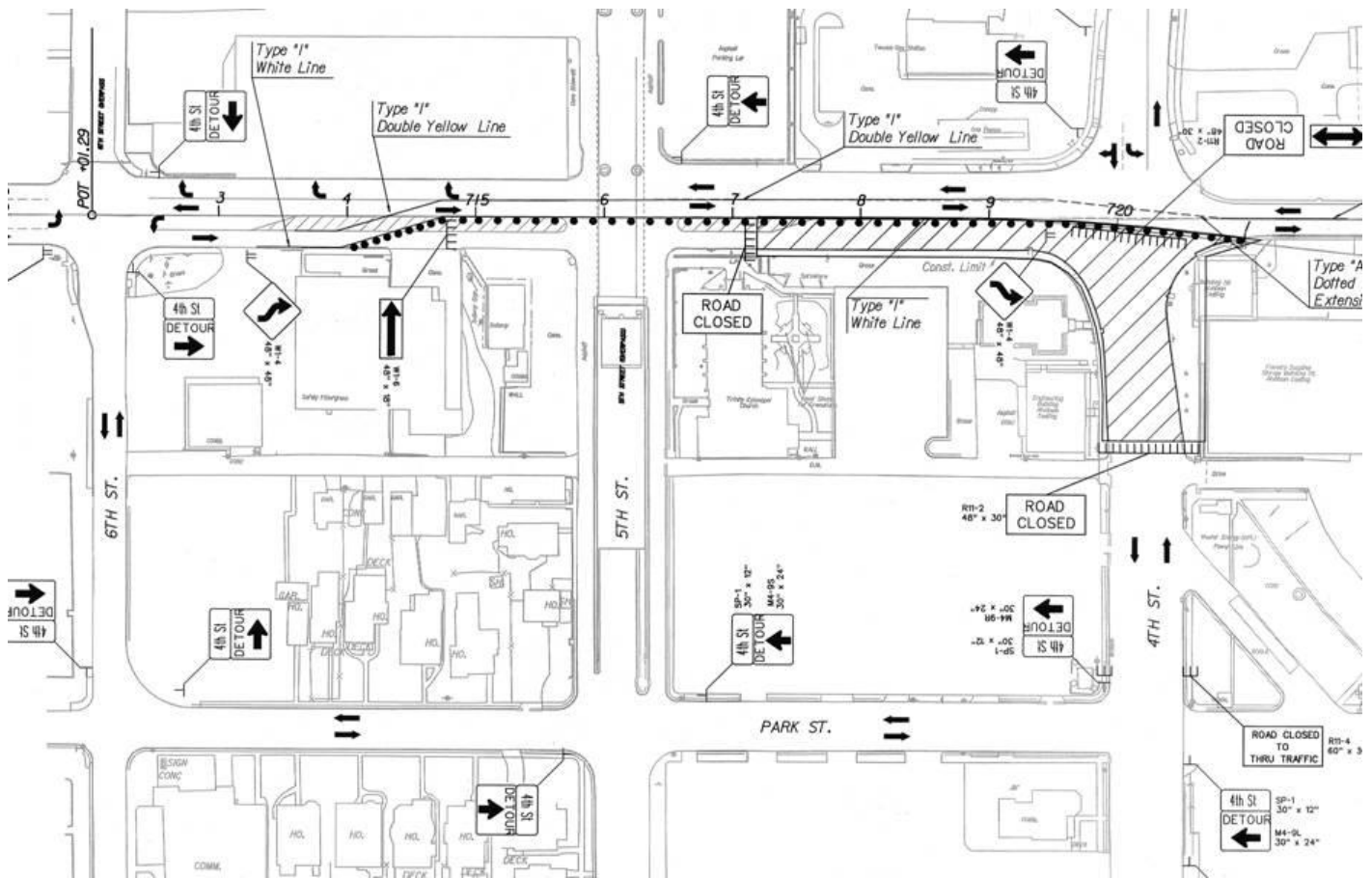
A marked detour will be provided. Traffic wanting to go south on 4th Street will take 6th Street south to Park Street, then head east on Park Street back to 4th Street. Traffic wanting to go north on 4th Street will take Park Street west to 6th Street then north on 6th Street. US-59 will be open to one lane of traffic in each direction during the project construction. Please see the detour route diagram below. Project work for the intersection reconstruction is scheduled to be completed by mid-summer 2010.

The new Amelia Earhart Memorial Bridge, a four-lane, tied arch structure will stretch nearly 2,500 feet, distinguished by its double steel arches on the main river span and special aesthetic lighting. It will replace the existing two-lane structure, which was completed in 1938 and is too narrow to handle some of today's larger truck loads and farm implements. The extra lanes also will accommodate the greater numbers of vehicles that now pass over the bridge daily.

The new bridge is scheduled to be completed in the fall of 2011 with removal of the existing bridge in 2012. The bridge replacement is a cooperative project funded by the Kansas Department of Transportation and the Missouri Department of Transportation. Of the \$59.4 million construction cost, Kansas will contribute \$30.6 million and MoDOT will contribute \$28.8 million.

The Kansas Department of Transportation urges all motorists to be alert, obey the warning signs, and “Give ‘Em a Brake!” when approaching and driving through the project work zone. For more information on this intersection reconstruction project, please contact Kimberly Qualls, Northeast Kansas Public Affairs Manager, at (785) 640-9340, or Michelle Anschutz, Horton Construction Engineer, at (785) 486-2142.

###



This information is available in alternative accessible formats. To obtain an alternative format, contact KDOT Transportation Information, Eisenhower Building, 700 SW Harrison, 2nd Floor West, Topeka, Kan., 66603-3754, or (785) 296-3585 (Voice)/Hearing Impaired - 711.