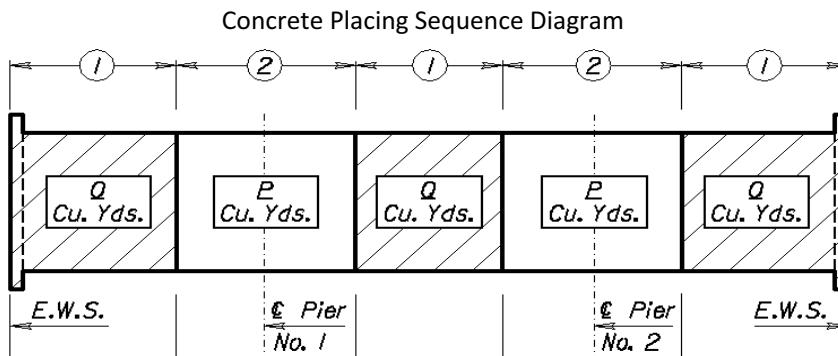


RCSH BRIDGE DESIGN, DETAIL & QUANTITY CHECK STATUS							
RCSH SPANS	Status Rdwy	28'	32'	36'	40'	40' OS	44'
24'-32'-24'	Design Check	NO	NO	NO	NO	NO	NO
	Detail Check	NO	NO	NO	NO	NO	NO
	Quantity Check	<u>NO</u>	<u>NO</u>	<u>NO</u>	<u>NO</u>	<u>NO</u>	<u>NO</u>
30'-40'-30'	Design Check	YES	YES	YES	YES	YES	YES
	Detail Check	NO	YES	YES	NO	YES	YES
	Quantity Check	<u>NO</u>	<u>NO</u>	YES	<u>NO</u>	<u>NO</u>	<u>YES</u>
36'-48'-36'	Design Check	YES	YES	YES	YES	NO	YES
	Detail Check	YES	YES	YES	YES	NO	YES
	Quantity Check	<u>NO</u>	YES	<u>NO</u>	<u>YES</u>	<u>NO</u>	<u>NO</u>
42'-56'-42'	Design Check	NO	NO	NO	NO	NO	NO
	Detail Check	NO	NO	NO	NO	NO	NO
	Quantity Check	<u>NO</u>	<u>NO</u>	<u>NO</u>	<u>NO</u>	<u>NO</u>	<u>NO</u>
48'-64'-48'	Design Check	YES	YES	YES	YES	YES	YES
	Detail Check	NO	NO	YES	YES	NO	NO
	Quantity Check	<u>NO</u>	<u>NO</u>	<u>NO</u>	<u>NO</u>	<u>NO</u>	<u>NO</u>
54'-72'-54'	Design Check	NO	YES	YES	YES	YES	YES
	Detail Check	NO	YES	YES	YES	YES	YES
	Quantity Check	<u>NO</u>	<u>NO</u>	YES	YES	<u>NO</u>	<u>NO</u>

24-32-24 RCSH Quantities 28' Roadway

24-32-24 RCSH Quantities  
28' Roadway

SUMMARY OF QUANTITIES	
Concrete, Grade 4 (AE)	
Super Structure, 2 1/2" Cl.	172.2 Cu. Yds.
Super Structure, 3" Cl.	175.5 Cu. Yds.
32" Corral Rails w/ curb	13.6 Cu. Yds.
32" Corral Rails no curb	11.5 Cu. Yds.
Reinforcing Steel, Grade 60 (Epoxy Coated)	
Abutments "A"	3929 lbs.
Slabs "S" & "T"	28082 lbs.
Corral Rails w/curb "R", "SC" & "C"	5417 lbs.
Corral Rails no curb "R" & "SC"	4937 lbs.
Spacer Frames	2234 lbs.



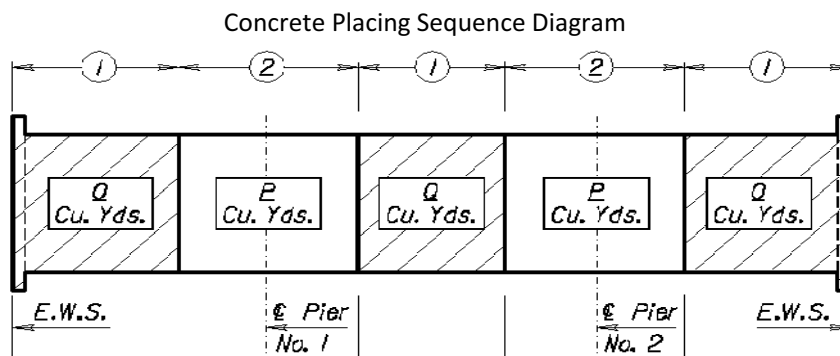
Pouring Sequence		
Location	Clear Cover	
	2-1/2"	3"
End Pour (O)	38.1	38.8
Pier Pour (P)	32.9	33.5
Mid Pour (Q)	18.9	19.6

Last Modified 1/20/2011

### 30-40-30 RCSH Quantities 28' Roadway

30-40-30 RCSH Quantities  
28' Roadway

SUMMARY OF QUANTITIES	
Concrete, Grade 4 (AE)	
Super Structure, 2 1/2" Cl.	212.5 Cu. Yds.
Super Structure, 3" Cl.	216.7 Cu. Yds.
32" Corral Rails w/ curb	16.9 Cu. Yds.
32" Corral Rails no curb	14.2 Cu. Yds.
Reinforcing Steel, Grade 60 (Epoxy Coated)	
Abutments "A"	3929 lbs.
Slabs "S" & "T"	40020 lbs.
Corral Rails w/curb "R", "SC" & "C"	6613 lbs.
Corral Rails no curb "R" & "SC"	6037 lbs.
Spacer Frames	2711 lbs.



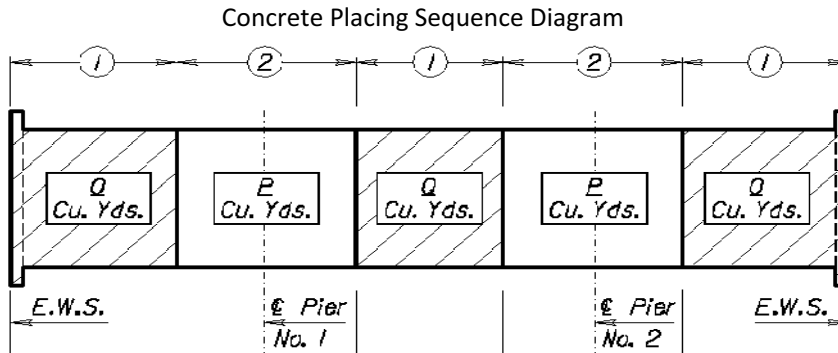
Pouring Sequence		
Location	Clear Cover	
	2-1/2"	3"
End Pour (O)	44.8	45.6
Pier Pour (P)	41.6	42.4
Mid Pour (Q)	25.8	26.7

Last Modified 1/20/2011

### 36-48-36 RCSH Quantities 28' Roadway

36-48-36 RCSH Quantities  
28' Roadway

SUMMARY OF QUANTITIES	
Concrete, Grade 4 (AE)	
Super Structure, 2 1/2" Cl.	257.1 Cu. Yds.
Super Structure, 3" Cl.	262.2 Cu. Yds.
32" Corral Rails w/ curb	20.1 Cu. Yds.
32" Corral Rails no curb	16.9 Cu. Yds.
Reinforcing Steel, Grade 60 (Epoxy Coated)	
Abutments "A"	3929 lbs.
Slabs "S" & "T"	53949 lbs.
Corral Rails w/curb "R", "SC" & "C"	7855 lbs.
Corral Rails no curb "R" & "SC"	7138 lbs.
Spacer Frames	3420 lbs.



Pouring Sequence		
Location	Clear Cover	
	2-1/2"	3"
End Pour (O)	52.2	53.3
Pier Pour (P)	51.2	52.3
Mid Pour (Q)	33.5	34.5

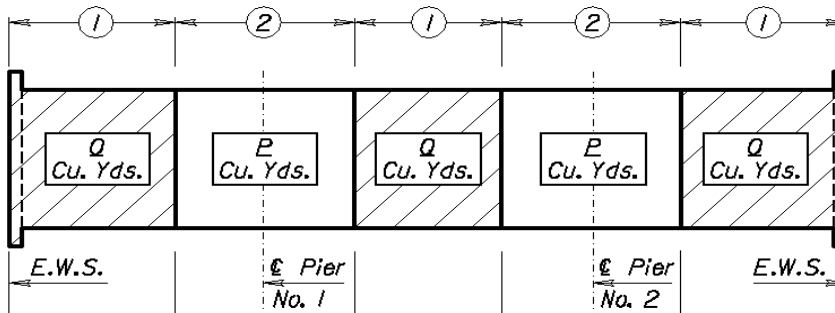
Last Modified 1/20/2011

42-56-42 RCSH Quantities 28' Roadway

42-56-42 RCSH Quantities  
28' Roadway

SUMMARY OF QUANTITIES		
Concrete, Grade 4 (AE)		
Super Structure, 2 1/2" Cl.		307.2 Cu. Yds.
Super Structure, 3" Cl.		313.2 Cu. Yds.
32" Corral Rails w/ curb		23.4 Cu. Yds.
32" Corral Rails no curb		19.6 Cu. Yds.
Reinforcing Steel, Grade 60 (Epoxy Coated)		
Abutments "A"		3929 lbs.
Slabs "S" & "T"		69416 lbs.
Corral Rails w/curb "R", "SC" & "C"		9046 lbs.
Corral Rails no curb "R" & "SC"		8238 lbs.
Spacer Frames		3910 lbs.

Concrete Placing Sequence Diagram



Pouring Sequence		
Location	Clear Cover	
	2-1/2"	3"
End Pour (O)	60	61.2
Pier Pour (P)	63.3	64.5
Mid Pour (Q)	41.1	42.4

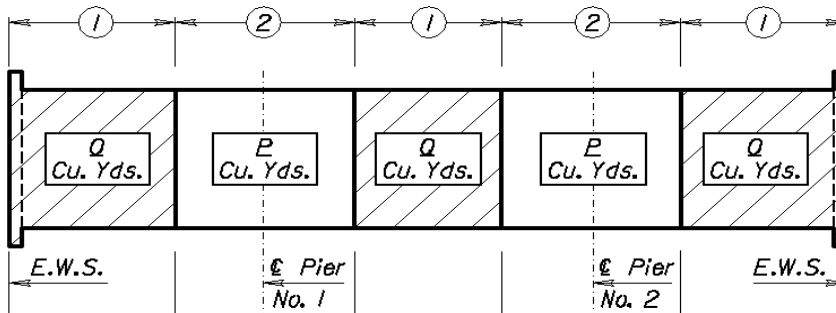
Last Modified 1/20/2011

48-64-48 RCSH Quantities 28' Roadway

48-64-48 RCSH Quantities  
28' Roadway

SUMMARY OF QUANTITIES	
Concrete, Grade 4 (AE)	
Super Structure, 2 1/2" Cl.	386.2 Cu. Yds.
Super Structure, 3" Cl.	393.3 Cu. Yds.
32" Corral Rails w/ curb	26.6 Cu. Yds.
32" Corral Rails no curb	22.3 Cu. Yds.
Reinforcing Steel, Grade 60 (Epoxy Coated)	
Abutments "A"	3929 lbs.
Slabs "S" & "T"	86138 lbs.
Corral Rails w/curb "R", "SC" & "C"	10265 lbs.
Corral Rails no curb "R" & "SC"	9339 lbs.
Spacer Frames	4713 lbs.

Concrete Placing Sequence Diagram



Pouring Sequence		
Location	Clear Cover	
	2-1/2"	3"
End Pour (O)	70.6	72
Pier Pour (P)	85.9	87.4
Mid Pour (Q)	51	52.3

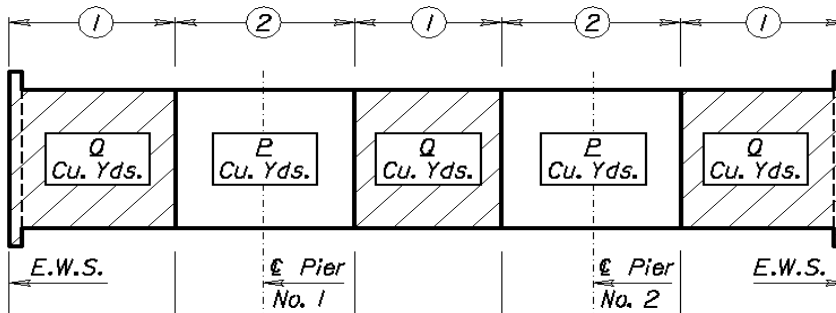
Last Modified 1/20/2011

54-72-54 RCSH Quantities 28' Roadway

54-72-54 RCSH Quantities  
28' Roadway

SUMMARY OF QUANTITIES	
Concrete, Grade 4 (AE)	
Super Structure, 2 1/2" Cl.	476.7 Cu. Yds.
Super Structure, 3" Cl.	484.6 Cu. Yds.
32" Corral Rails w/ curb	29.9 Cu. Yds.
32" Corral Rails no curb	25.1 Cu. Yds.
Reinforcing Steel, Grade 60 (Epoxy Coated)	
Abutments "A"	3929 lbs.
Slabs "S" & "T"	98470 lbs.
Corral Rails w/curb "R", "SC" & "C"	11484 lbs.
Corral Rails no curb "R" & "SC"	10439 lbs.
Spacer Frames	5328 lbs.

Concrete Placing Sequence Diagram



Pouring Sequence		
Location	Clear Cover	
	2-1/2"	3"
End Pour (O)	83	84.5
Pier Pour (P)	111.5	113.2
Mid Pour (Q)	62.8	64.3

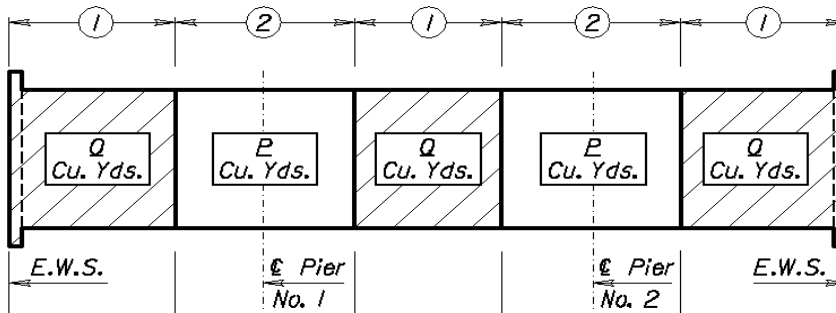
Last Modified 1/20/2011

24-32-24 RCSH Quantities 32' Roadway

24-32-24 RCSH Quantities  
32' Roadway

SUMMARY OF QUANTITIES	
Concrete, Grade 4 (AE)	
Super Structure, 2 1/2" Cl.	192.4 Cu. Yds.
Super Structure, 3" Cl.	196.2 Cu. Yds.
32" Corral Rails w/ curb	13.6 Cu. Yds.
32" Corral Rails no curb	11.5 Cu. Yds.
Reinforcing Steel, Grade 60 (Epoxy Coated)	
Abutments "A"	4313 lbs.
Slabs "S" & "T"	31620 lbs.
Corral Rails w/curb "R", "SC" & "C"	5417 lbs.
Corral Rails no curb "R" & "SC"	4937 lbs.
Spacer Frames	2501 lbs.

Concrete Placing Sequence Diagram



Pouring Sequence		
Location	Clear Cover	
	2-1/2"	3"
End Pour (O)	42.6	43.4
Pier Pour (P)	37.2	38
Mid Pour (Q)	21.4	22.2

Last Modified 1/21/2011

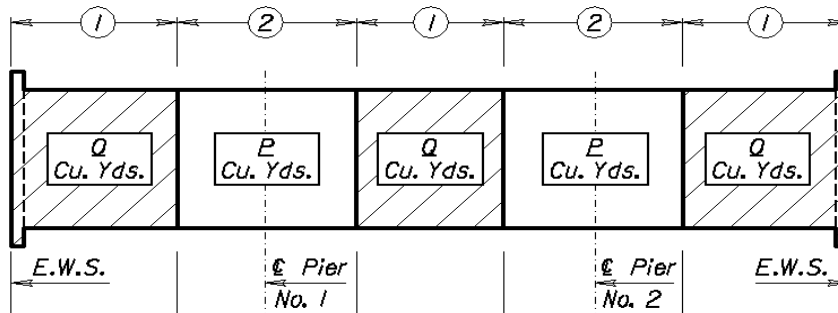


### 30-40-30 RCSH Quantities 32' Roadway

30-40-30 RCSH Quantities  
32' Roadway

SUMMARY OF QUANTITIES	
Concrete, Grade 4 (AE)	
Super Structure, 2 1/2" Cl.	237.7 Cu. Yds.
Super Structure, 3" Cl.	242.5 Cu. Yds.
32" Corral Rails w/ curb	16.9 Cu. Yds.
32" Corral Rails no curb	14.2 Cu. Yds.
Reinforcing Steel, Grade 60 (Epoxy Coated)	
Abutments "A"	4313 lbs.
Slabs "S" & "T"	45278 lbs.
Corral Rails w/curb "R", "SC" & "C"	6613 lbs.
Corral Rails no curb "R" & "SC"	6037 lbs.
Spacer Frames	3035 lbs.

Concrete Placing Sequence Diagram



Pouring Sequence		
Location	Clear Cover	
	2-1/2"	3"
End Pour (O)	50.2	51.1
Pier Pour (P)	47.1	48
Mid Pour (Q)	29.2	30.2

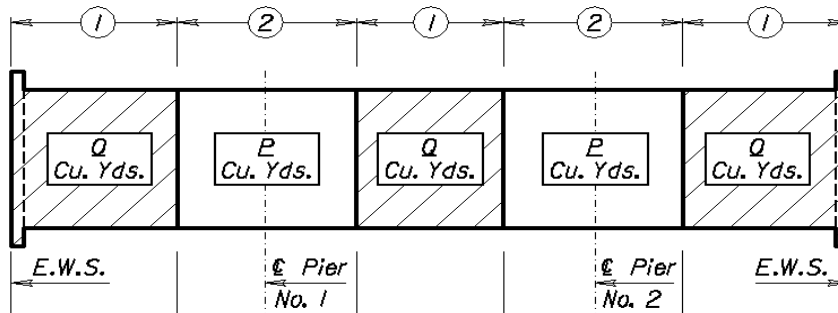
Last Modified 1/21/2011

### 36-48-36 RCSH Quantities 32' Roadway

36-48-36 RCSH Quantities  
32' Roadway

SUMMARY OF QUANTITIES	
Concrete, Grade 4 (AE)	
Super Structure, 2 1/2" Cl.	287.9 Cu. Yds.
Super Structure, 3" Cl.	293.7 Cu. Yds.
32" Corral Rails w/ curb	20.1 Cu. Yds.
32" Corral Rails no curb	16.9 Cu. Yds.
Reinforcing Steel, Grade 60 (Epoxy Coated)	
Abutments "A"	4313 lbs.
Slabs "S" & "T"	61359 lbs.
Corral Rails w/curb "R", "SC" & "C"	7855 lbs.
Corral Rails no curb "R" & "SC"	7138 lbs.
Spacer Frames	3825 lbs.

Concrete Placing Sequence Diagram



Pouring Sequence		
Location	Clear Cover	
	2-1/2"	3"
End Pour (O)	58.6	59.8
Pier Pour (P)	58	59.2
Mid Pour (Q)	37.9	39.1

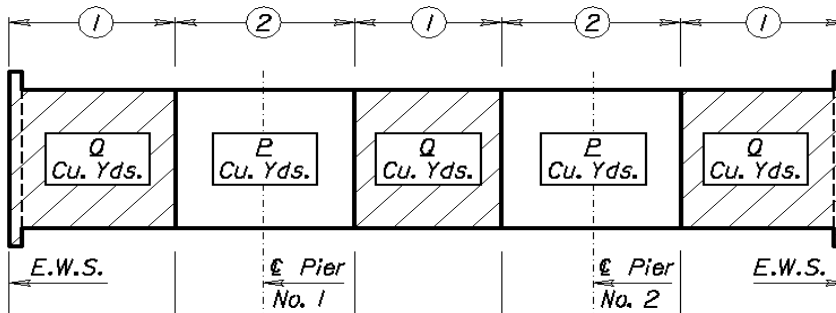
Last Modified 1/21/2011

42-56-42 RCSH Quantities 32' Roadway

42-56-42 RCSH Quantities  
32' Roadway

SUMMARY OF QUANTITIES	
Concrete, Grade 4 (AE)	
Super Structure, 2 1/2" Cl.	344.2 Cu. Yds.
Super Structure, 3" Cl.	351.1 Cu. Yds.
32" Corral Rails w/ curb	23.4 Cu. Yds.
32" Corral Rails no curb	19.6 Cu. Yds.
Reinforcing Steel, Grade 60 (Epoxy Coated)	
Abutments "A"	4313 lbs.
Slabs "S" & "T"	78960 lbs.
Corral Rails w/curb "R", "SC" & "C"	9046 lbs.
Corral Rails no curb "R" & "SC"	8238 lbs.
Spacer Frames	4377 lbs.

Concrete Placing Sequence Diagram



Pouring Sequence		
Location	Clear Cover	
	2-1/2"	3"
End Pour (O)	67.4	68.8
Pier Pour (P)	71.7	73
Mid Pour (Q)	46.6	48

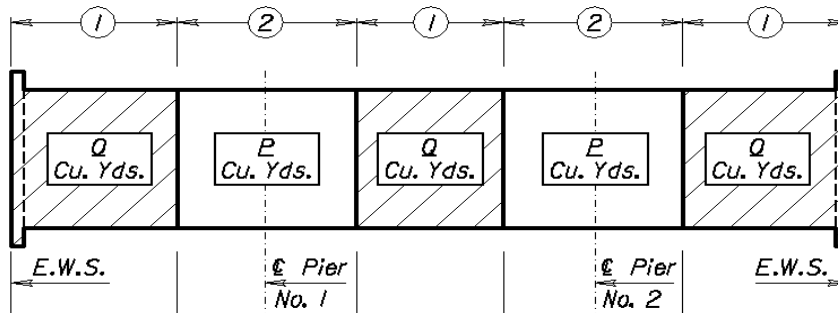
Last Modified 1/21/2011

48-64-48 RCSH Quantities 32' Roadway

48-64-48 RCSH Quantities  
32' Roadway

SUMMARY OF QUANTITIES	
Concrete, Grade 4 (AE)	
Super Structure, 2 1/2" Cl.	433.5 Cu. Yds.
Super Structure, 3" Cl.	441.4 Cu. Yds.
32" Corral Rails w/ curb	26.6 Cu. Yds.
32" Corral Rails no curb	22.3 Cu. Yds.
Reinforcing Steel, Grade 60 (Epoxy Coated)	
Abutments "A"	4313 lbs.
Slabs "S" & "T"	94423 lbs.
Corral Rails w/curb "R", "SC" & "C"	10265 lbs.
Corral Rails no curb "R" & "SC"	9339 lbs.
Spacer Frames	5276 lbs.

Concrete Placing Sequence Diagram



Pouring Sequence		
Location	Clear Cover	
	2-1/2"	3"
End Pour (O)	79.4	81
Pier Pour (P)	97.3	99
Mid Pour (Q)	57.7	59.3

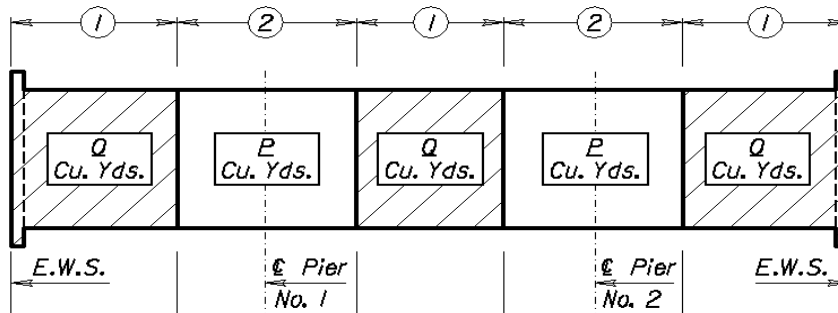
Last Modified 1/21/2011

54-72-54 RCSH Quantities 32' Roadway

54-72-54 RCSH Quantities  
32' Roadway

SUMMARY OF QUANTITIES	
Concrete, Grade 4 (AE)	
Super Structure, 2 1/2" Cl.	535.6 Cu. Yds.
Super Structure, 3" Cl.	544.6 Cu. Yds.
32" Corral Rails w/ curb	29.9 Cu. Yds.
32" Corral Rails no curb	25.1 Cu. Yds.
Reinforcing Steel, Grade 60 (Epoxy Coated)	
Abutments "A"	4313 lbs.
Slabs "S" & "T"	212046 lbs.
Corral Rails w/curb "R", "SC" & "C"	11484 lbs.
Corral Rails no curb "R" & "SC"	10439 lbs.
Spacer Frames	6067 lbs.

Concrete Placing Sequence Diagram



Pouring Sequence		
Location	Clear Cover	
	2-1/2"	3"
End Pour (O)	93.5	95.2
Pier Pour (P)	126.3	128.3
Mid Pour (Q)	71.2	72.9

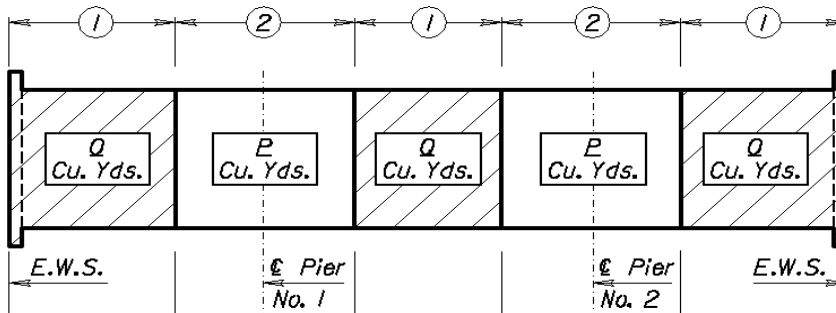
Last Modified 1/21/2011

24-32-24 RCSH Quantities 36' Roadway

24-32-24 RCSH Quantities  
36' Roadway

SUMMARY OF QUANTITIES	
Concrete, Grade 4 (AE)	
Super Structure, 2 1/2" Cl.	212.5 Cu. Yds.
Super Structure, 3" Cl.	216.7 Cu. Yds.
32" Corral Rails w/ curb	13.6 Cu. Yds.
32" Corral Rails no curb	11.5 Cu. Yds.
Reinforcing Steel, Grade 60 (Epoxy Coated)	
Abutments "A"	4779 lbs.
Slabs "S" & "T"	35210 lbs.
Corral Rails w/curb "R", "SC" & "C"	5417 lbs.
Corral Rails no curb "R" & "SC"	4937 lbs.
Spacer Frames	2742 lbs.

Concrete Placing Sequence Diagram



Pouring Sequence		
Location	Clear Cover	
	2-1/2"	3"
End Pour (O)	47.1	47.9
Pier Pour (P)	41.6	42.4
Mid Pour (Q)	23.9	24.8

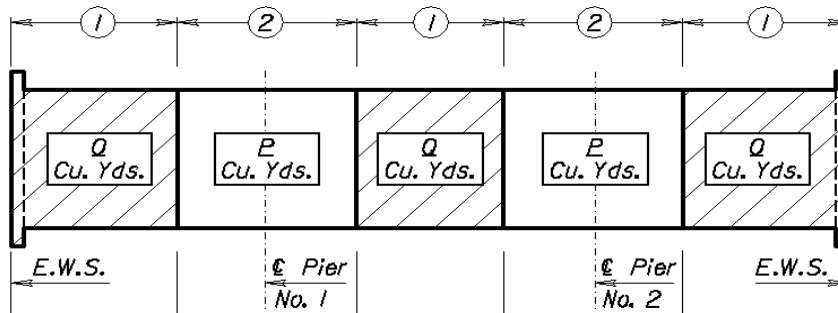
Last Modified 1/21/2011

### 30-40-30 RCSH Quantities 36' Roadway

30-40-30 RCSH Quantities  
36' Roadway

SUMMARY OF QUANTITIES	
Concrete, Grade 4 (AE)	
Super Structure, 2 1/2" Cl.	262.8 Cu. Yds.
Super Structure, 3" Cl.	268.2 Cu. Yds.
32" Corral Rails w/ curb	16.9 Cu. Yds.
32" Corral Rails no curb	14.2 Cu. Yds.
Reinforcing Steel, Grade 60 (Epoxy Coated)	
Abutments "A"	4779 lbs.
Slabs "S" & "T"	50338 lbs.
Corral Rails w/curb "R", "SC" & "C"	6613 lbs.
Corral Rails no curb "R" & "SC"	6037 lbs.
Spacer Frames	3359 lbs.

Concrete Placing Sequence Diagram



Pouring Sequence		
Location	Clear Cover	
	2-1/2"	3"
End Pour (O)	55.5	56.6
Pier Pour (P)	52.5	53.6
Mid Pour (Q)	32.7	33.8

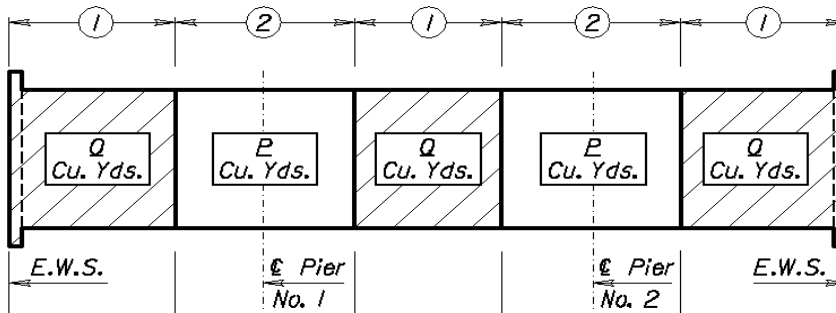
Last Modified 1/21/2011

### 36-48-36 RCSH Quantities 36' Roadway

36-48-36 RCSH Quantities  
36' Roadway

SUMMARY OF QUANTITIES		
Concrete, Grade 4 (AE)		
Super Structure, 2 1/2" Cl.		318.6 Cu. Yds.
Super Structure, 3" Cl.		325.1 Cu. Yds.
32" Corral Rails w/ curb		20.1 Cu. Yds.
32" Corral Rails no curb		16.9 Cu. Yds.
Reinforcing Steel, Grade 60 (Epoxy Coated)		
Abutments "A"		4779 lbs.
Slabs "S" & "T"		68377 lbs.
Corral Rails w/curb "R", "SC" & "C"		7509 lbs.
Corral Rails no curb "R" & "SC"		6792 lbs.
Spacer Frames		4233 lbs.

Concrete Placing Sequence Diagram



Pouring Sequence		
Location	Clear Cover	
	2-1/2"	3"
End Pour (O)	65	66.3
Pier Pour (P)	64.8	66.1
Mid Pour (Q)	42.4	43.7

Last Modified 1/21/2011

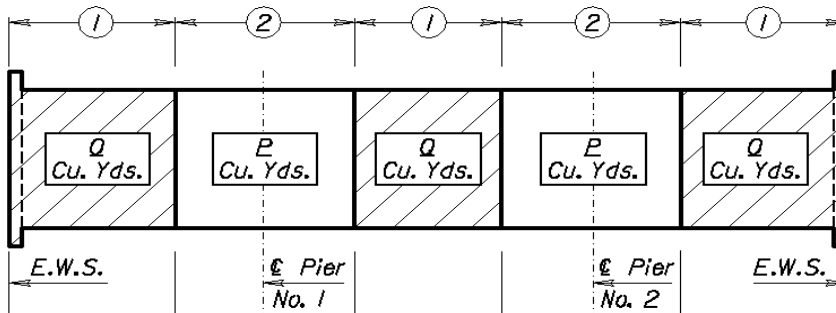


42-56-42 RCSH Quantities 36' Roadway

42-56-42 RCSH Quantities  
36' Roadway

SUMMARY OF QUANTITIES	
Concrete, Grade 4 (AE)	
Super Structure, 2 1/2" Cl.	381.2 Cu. Yds.
Super Structure, 3" Cl.	389.0 Cu. Yds.
32" Corral Rails w/ curb	23.4 Cu. Yds.
32" Corral Rails no curb	19.6 Cu. Yds.
Reinforcing Steel, Grade 60 (Epoxy Coated)	
Abutments "A"	4779 lbs.
Slabs "S" & "T"	92336 lbs.
Corral Rails w/curb "R", "SC" & "C"	9363 lbs.
Corral Rails no curb "R" & "SC"	8555 lbs.
Spacer Frames	4845 lbs.

Concrete Placing Sequence Diagram



Pouring Sequence		
Location	Clear Cover	
	2-1/2"	3"
End Pour (O)	74.8	76.4
Pier Pour (P)	80	81.6
Mid Pour (Q)	52.1	53.7

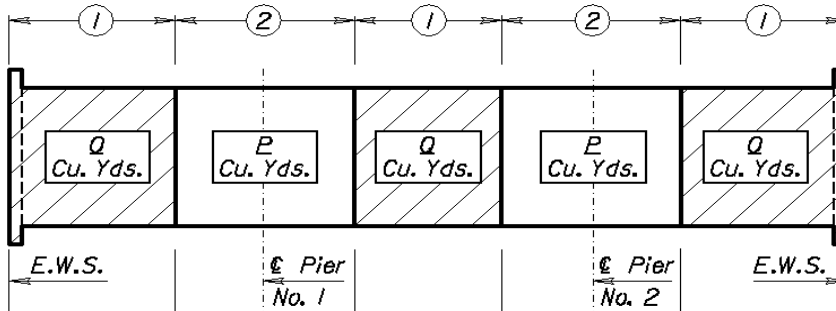
Last Modified 1/21/2011

48-64-48 RCSH Quantities 36' Roadway

48-64-48 RCSH Quantities  
36' Roadway

SUMMARY OF QUANTITIES	
Concrete, Grade 4 (AE)	
Super Structure, 2 1/2" Cl.	480.7 Cu. Yds.
Super Structure, 3" Cl.	489.6 Cu. Yds.
32" Corral Rails w/ curb	26.6 Cu. Yds.
32" Corral Rails no curb	22.3 Cu. Yds.
Reinforcing Steel, Grade 60 (Epoxy Coated)	
Abutments "A"	4779 lbs.
Slabs "S" & "T"	180108 lbs.
Corral Rails w/curb "R", "SC" & "C"	15212 lbs.
Corral Rails no curb "R" & "SC"	13846 lbs.
Spacer Frames	10545 lbs.

Concrete Placing Sequence Diagram



Pouring Sequence		
Location	Clear Cover	
	2-1/2"	3"
End Pour (O)	88.3	90
Pier Pour (P)	108.7	110.6
Mid Pour (Q)	64.5	66.2

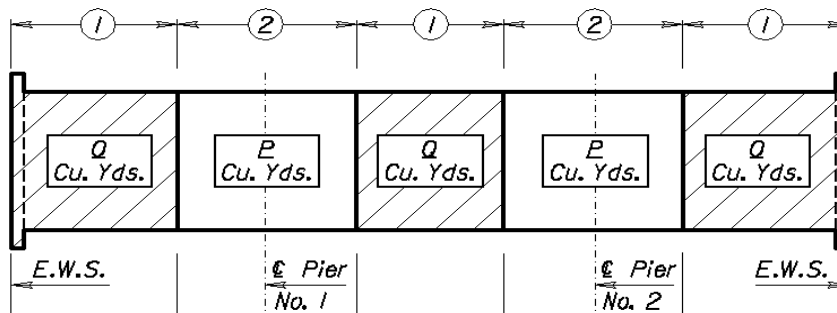
Last Modified 1/21/2011

54-72-54 RCSH Quantities 36' Roadway

54-72-54 RCSH Quantities  
36' Roadway

SUMMARY OF QUANTITIES	
Concrete, Grade 4 (AE)	
Super Structure, 2 1/2" Cl.	594.5 Cu. Yds.
Super Structure, 3" Cl.	604.5 Cu. Yds.
32" Corral Rails w/ curb	29.9 Cu. Yds.
32" Corral Rails no curb	25.1 Cu. Yds.
Reinforcing Steel, Grade 60 (Epoxy Coated)	
Abutments "A"	4779 lbs.
Slabs "S" & "T"	126791 lbs.
Corral Rails w/curb "R", "SC" & "C"	11484 lbs.
Corral Rails no curb "R" & "SC"	10439 lbs.
Spacer Frames	6596 lbs.

Concrete Placing Sequence Diagram



Pouring Sequence		
Location	Clear Cover	
	2-1/2"	3"
End Pour (O)	103.9	105.8
Pier Pour (P)	141.1	143.3
Mid Pour (Q)	79.6	81.4

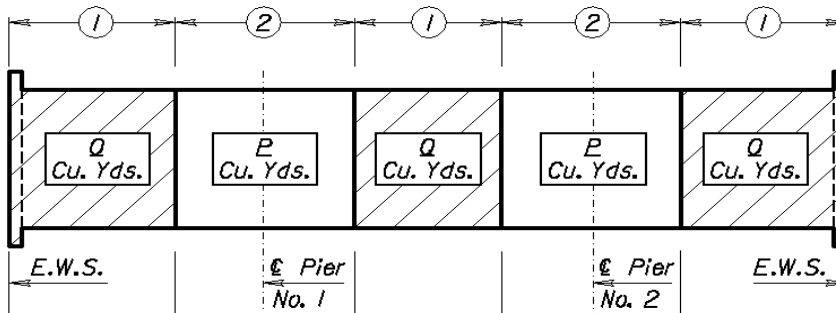
Last Modified 1/21/2011

24-32-24 RCSH Quantities 40' Roadway

24-32-24 RCSH Quantities  
40' Roadway

SUMMARY OF QUANTITIES	
Concrete, Grade 4 (AE)	
Super Structure, 2 1/2" Cl.	232.6 Cu. Yds.
Super Structure, 3" Cl.	237.3 Cu. Yds.
32" Corral Rails w/ curb	13.6 Cu. Yds.
32" Corral Rails no curb	11.5 Cu. Yds.
Reinforcing Steel, Grade 60 (Epoxy Coated)	
Abutments "A"	5204 lbs.
Slabs "S" & "T"	39088 lbs.
Corral Rails w/curb "R", "SC" & "C"	5417 lbs.
Corral Rails no curb "R" & "SC"	4937 lbs.
Spacer Frames	3036 lbs.

Concrete Placing Sequence Diagram



Pouring Sequence		
Location	Clear Cover	
	2-1/2"	3"
End Pour (O)	51.6	52.5
Pier Pour (P)	45.9	46.8
Mid Pour (Q)	26.4	27.4

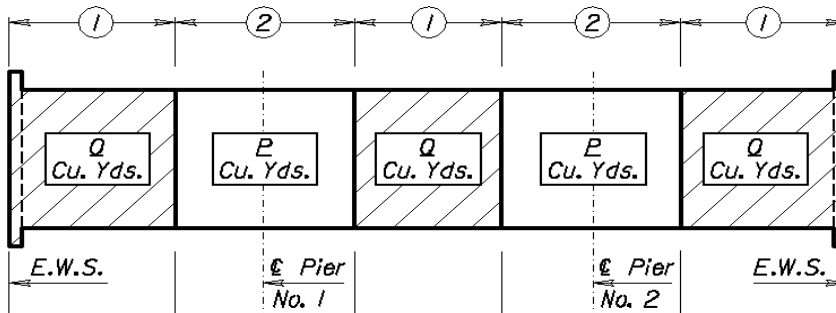
Last Modified 1/24/2011

### 30-40-30 RCSH Quantities 40' Roadway

30-40-30 RCSH Quantities  
40' Roadway

SUMMARY OF QUANTITIES	
Concrete, Grade 4 (AE)	
Super Structure, 2 1/2" Cl.	287.9 Cu. Yds.
Super Structure, 3" Cl.	293.8 Cu. Yds.
32" Corral Rails w/ curb	16.9 Cu. Yds.
32" Corral Rails no curb	14.2 Cu. Yds.
Reinforcing Steel, Grade 60 (Epoxy Coated)	
Abutments "A"	5204 lbs.
Slabs "S" & "T"	56047 lbs.
Corral Rails w/curb "R", "SC" & "C"	6613 lbs.
Corral Rails no curb "R" & "SC"	6037 lbs.
Spacer Frames	3684 lbs.

Concrete Placing Sequence Diagram



Pouring Sequence		
Location	Clear Cover	
	2-1/2"	3"
End Pour (O)	60.9	62.1
Pier Pour (P)	58	59.2
Mid Pour (Q)	36.1	37.3

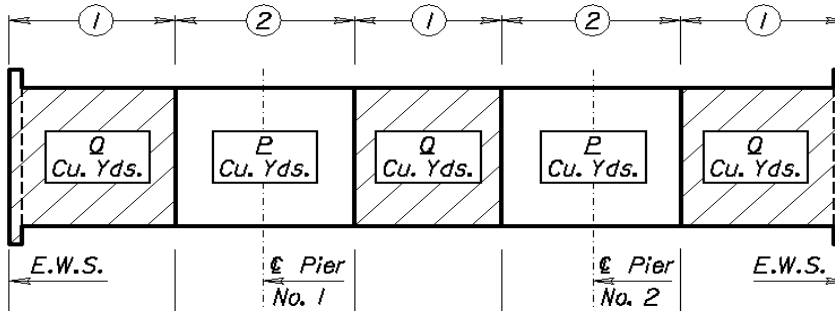
Last Modified 1/24/2011

### 36-48-36 RCSH Quantities 40' Roadway

36-48-36 RCSH Quantities  
40' Roadway

SUMMARY OF QUANTITIES	
Concrete, Grade 4 (AE)	
Super Structure, 2 1/2" Cl.	349.3 Cu. Yds.
Super Structure, 3" Cl.	356.5 Cu. Yds.
32" Corral Rails w/ curb	20.1 Cu. Yds.
32" Corral Rails no curb	16.9 Cu. Yds.
Reinforcing Steel, Grade 60 (Epoxy Coated)	
Abutments "A"	5204 lbs.
Slabs "S" & "T"	75884 lbs.
Corral Rails w/curb "R", "SC" & "C"	7855 lbs.
Corral Rails no curb "R" & "SC"	7138 lbs.
Spacer Frames	4642 lbs.

Concrete Placing Sequence Diagram



Pouring Sequence		
Location	Clear Cover	
	2-1/2"	3"
End Pour (O)	71.3	72.7
Pier Pour (P)	71.6	73
Mid Pour (Q)	46.8	48.3

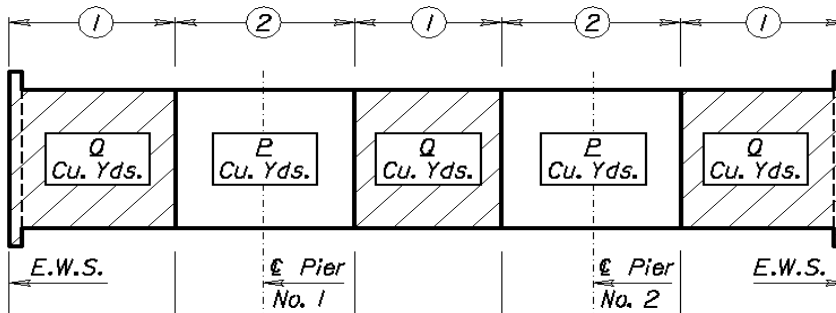
Last Modified 1/24/2011

42-56-42 RCSH Quantities 40' Roadway

42-56-42 RCSH Quantities  
40' Roadway

SUMMARY OF QUANTITIES		
Concrete, Grade 4 (AE)		
Super Structure, 2 1/2" Cl.		418.2 Cu. Yds.
Super Structure, 3" Cl.		426.7 Cu. Yds.
32" Corral Rails w/ curb		23.4 Cu. Yds.
32" Corral Rails no curb		19.6 Cu. Yds.
Reinforcing Steel, Grade 60 (Epoxy Coated)		
Abutments "A"		5204 lbs.
Slabs "S" & "T"		97501 lbs.
Corral Rails w/curb "R", "SC" & "C"		9363 lbs.
Corral Rails no curb "R" & "SC"		8555 lbs.
Spacer Frames		5312 lbs.

Concrete Placing Sequence Diagram



Pouring Sequence		
Location	Clear Cover	
	2-1/2"	3"
End Pour (O)	82.2	83.9
Pier Pour (P)	88.4	90.1
Mid Pour (Q)	57.6	59.3

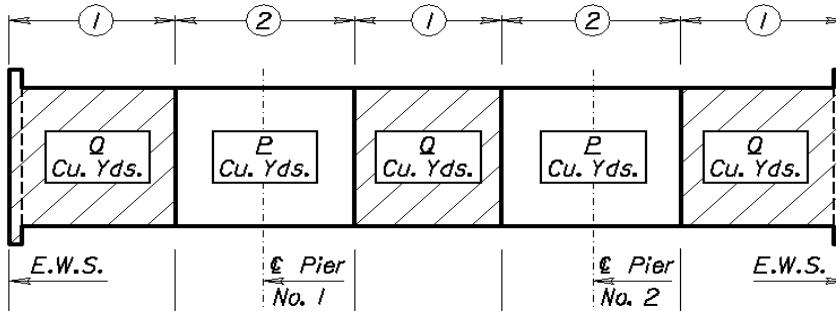
Last Modified 1/24/2011

48-64-48 RCSH Quantities 40' Roadway

48-64-48 RCSH Quantities  
40' Roadway

SUMMARY OF QUANTITIES	
Concrete, Grade 4 (AE)	
Super Structure, 2 1/2" Cl.	527.8 Cu. Yds.
Super Structure, 3" Cl.	537.6 Cu. Yds.
32" Corral Rails w/ curb	26.6 Cu. Yds.
32" Corral Rails no curb	22.3 Cu. Yds.
Reinforcing Steel, Grade 60 (Epoxy Coated)	
Abutments "A"	5204 lbs.
Slabs "S" & "T"	117027 lbs.
Corral Rails w/curb "R", "SC" & "C"	10265 lbs.
Corral Rails no curb "R" & "SC"	9339 lbs.
Spacer Frames	6401 lbs.

Concrete Placing Sequence Diagram



Pouring Sequence		
Location	Clear Cover	
	2-1/2"	3"
End Pour (O)	97.1	99
Pier Pour (P)	120.1	122.2
Mid Pour (Q)	71.3	73.2

Last Modified 1/24/2011

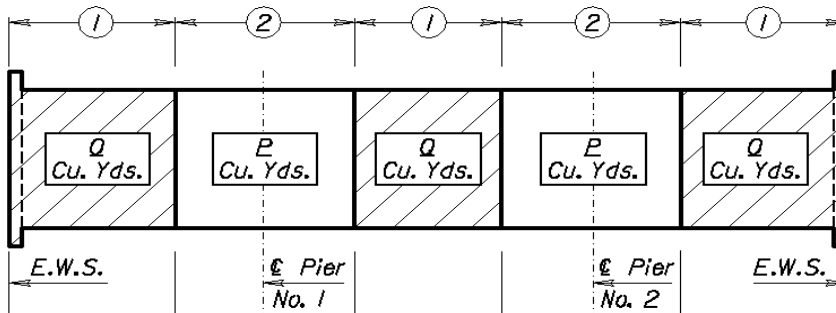


54-72-54 RCSH Quantities 40' Roadway

54-72-54 RCSH Quantities  
40' Roadway

SUMMARY OF QUANTITIES	
Concrete, Grade 4 (AE)	
Super Structure, 2 1/2" Cl.	653.3 Cu. Yds.
Super Structure, 3" Cl.	664.4 Cu. Yds.
32" Corral Rails w/ curb	29.9 Cu. Yds.
32" Corral Rails no curb	25.1 Cu. Yds.
Reinforcing Steel, Grade 60 (Epoxy Coated)	
Abutments "A"	5204 lbs.
Slabs "S" & "T"	141433 lbs.
Corral Rails w/curb "R", "SC" & "C"	11484 lbs.
Corral Rails no curb "R" & "SC"	10439 lbs.
Spacer Frames	7230 lbs.

Concrete Placing Sequence Diagram



Pouring Sequence		
Location	Clear Cover	
	2-1/2"	3"
End Pour (O)	114.4	116.5
Pier Pour (P)	155.9	158.3
Mid Pour (Q)	87.9	90

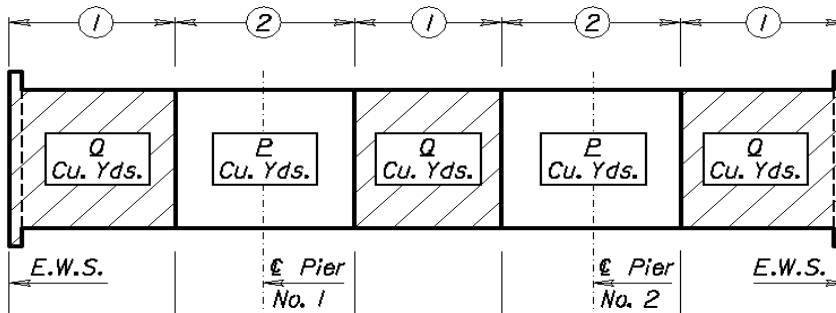
Last Modified 1/24/2011

24-32-24 RCSH Quantities 40' OS Roadway

24-32-24 RCSH Quantities  
40' OS Roadway

SUMMARY OF QUANTITIES	
Concrete, Grade 4 (AE)	
Super Structure, 2 1/2" Cl.	232.6 Cu. Yds.
Super Structure, 3" Cl.	237.3 Cu. Yds.
32" Corral Rails w/ curb	13.6 Cu. Yds.
32" Corral Rails no curb	11.5 Cu. Yds.
Reinforcing Steel, Grade 60 (Epoxy Coated)	
Abutments "A"	5204 lbs.
Slabs "S" & "T"	39088 lbs.
Corral Rails w/curb "R", "SC" & "C"	5417 lbs.
Corral Rails no curb "R" & "SC"	4937 lbs.
Spacer Frames	3449 lbs.

Concrete Placing Sequence Diagram



Pouring Sequence		
Location	Clear Cover	
	2-1/2"	3"
End Pour (O)	51.6	52.5
Pier Pour (P)	45.9	46.8
Mid Pour (Q)	26.4	27.4

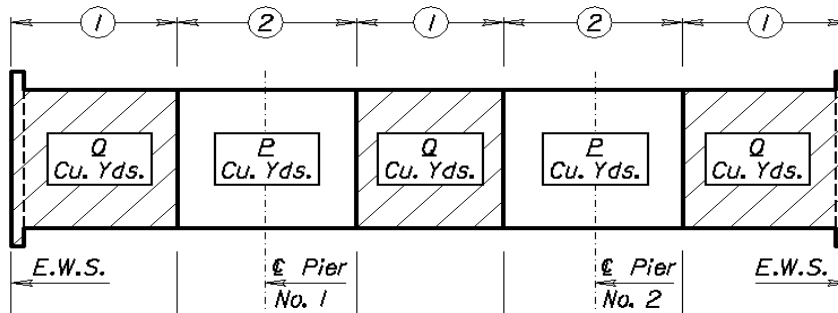
Last Modified 1/25/2011

30-40-30 RCSH Quantities 40' OS Roadway

30-40-30 RCSH Quantities  
40' OS Roadway

SUMMARY OF QUANTITIES	
Concrete, Grade 4 (AE)	
Super Structure, 2 1/2" Cl.	287.9 Cu. Yds.
Super Structure, 3" Cl.	293.8 Cu. Yds.
32" Corral Rails w/ curb	16.9 Cu. Yds.
32" Corral Rails no curb	14.2 Cu. Yds.
Reinforcing Steel, Grade 60 (Epoxy Coated)	
Abutments "A"	5204 lbs.
Slabs "S" & "T"	56047 lbs.
Corral Rails w/curb "R", "SC" & "C"	6613 lbs.
Corral Rails no curb "R" & "SC"	6037 lbs.
Spacer Frames	4219 lbs.

Concrete Placing Sequence Diagram



Pouring Sequence		
Location	Clear Cover	
	2-1/2"	3"
End Pour (O)	60.9	62.1
Pier Pour (P)	58	59.2
Mid Pour (Q)	36.1	37.3

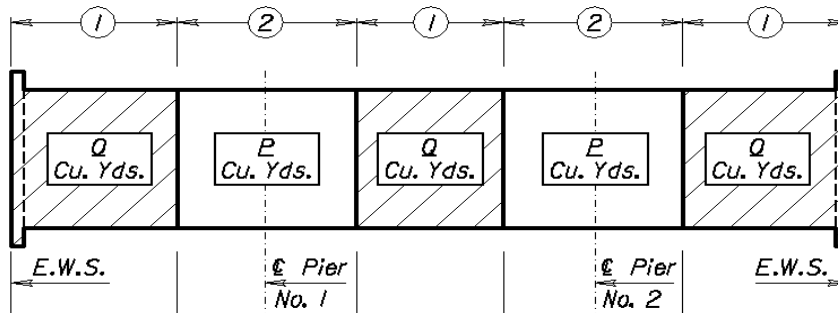
Last Modified 1/25/2011

36-48-36 RCSH Quantities 40' OS Roadway

36-48-36 RCSH Quantities  
40' OS Roadway

SUMMARY OF QUANTITIES	
Concrete, Grade 4 (AE)	
Super Structure, 2 1/2" Cl.	349.2 Cu. Yds.
Super Structure, 3" Cl.	356.5 Cu. Yds.
32" Corral Rails w/ curb	20.1 Cu. Yds.
32" Corral Rails no curb	16.9 Cu. Yds.
Reinforcing Steel, Grade 60 (Epoxy Coated)	
Abutments "A"	5204 lbs.
Slabs "S" & "T"	75884 lbs.
Corral Rails w/curb "R", "SC" & "C"	7855 lbs.
Corral Rails no curb "R" & "SC"	7138 lbs.
Spacer Frames	5348 lbs.

Concrete Placing Sequence Diagram



Pouring Sequence		
Location	Clear Cover	
	2-1/2"	3"
End Pour (O)	71.3	72.7
Pier Pour (P)	71.6	73
Mid Pour (Q)	46.8	48.3

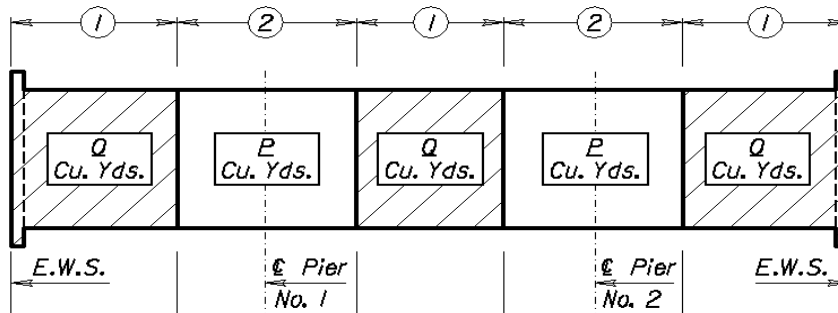
Last Modified 1/25/2011

42-56-42 RCSH Quantities 40' OS Roadway

42-56-42 RCSH Quantities  
40' OS Modified Roadway

SUMMARY OF QUANTITIES	
Concrete, Grade 4 (AE)	
Super Structure, 2 1/2" Cl.	418.2 Cu. Yds.
Super Structure, 3" Cl.	426.7 Cu. Yds.
32" Corral Rails w/ curb	23.4 Cu. Yds.
32" Corral Rails no curb	19.6 Cu. Yds.
Reinforcing Steel, Grade 60 (Epoxy Coated)	
Abutments "A"	5204 lbs.
Slabs "S" & "T"	97501 lbs.
Corral Rails w/curb "R", "SC" & "C"	9363 lbs.
Corral Rails no curb "R" & "SC"	8555 lbs.
Spacer Frames	6164 lbs.

Concrete Placing Sequence Diagram



Pouring Sequence		
Location	Clear Cover	
	2-1/2"	3"
End Pour (O)	82.2	83.9
Pier Pour (P)	88.4	90.1
Mid Pour (Q)	57.6	59.3

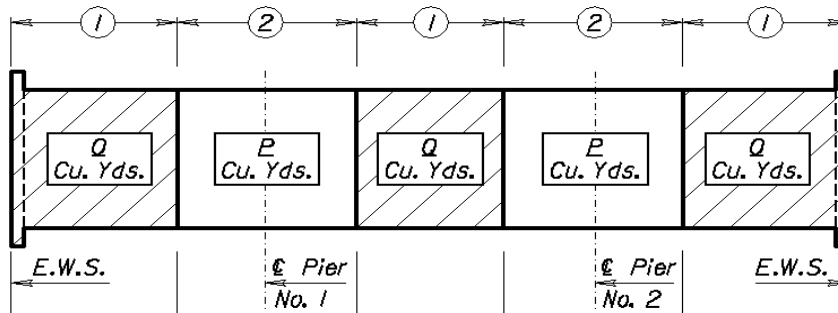
Last Modified 1/25/2011

48-64-48 RCSH Quantities 40' OS Roadway

48-64-48 RCSH Quantities  
40' OS Modified Roadway

SUMMARY OF QUANTITIES	
Concrete, Grade 4 (AE)	
Super Structure, 2 1/2" Cl.	527.8 Cu. Yds.
Super Structure, 3" Cl.	537.6 Cu. Yds.
32" Corral Rails w/ curb	26.6 Cu. Yds.
32" Corral Rails no curb	22.3 Cu. Yds.
Reinforcing Steel, Grade 60 (Epoxy Coated)	
Abutments "A"	5204 lbs.
Slabs "S" & "T"	117027 lbs.
Corral Rails w/curb "R", "SC" & "C"	10265 lbs.
Corral Rails no curb "R" & "SC"	9339 lbs.
Spacer Frames	7636 lbs.

Concrete Placing Sequence Diagram



Pouring Sequence		
Location	Clear Cover	
	2-1/2"	3"
End Pour (O)	97	98.9
Pier Pour (P)	120.1	122.2
Mid Pour (Q)	71.3	73.2

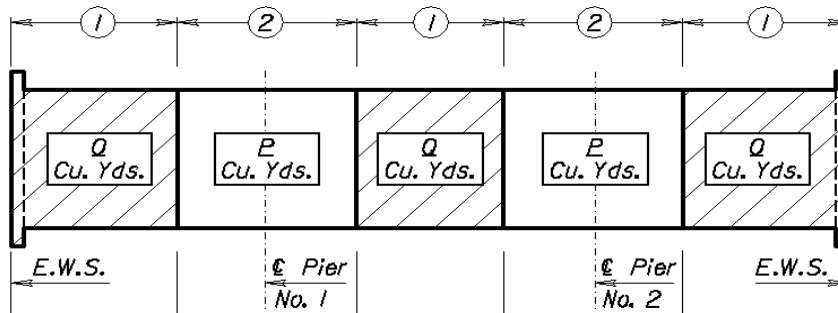
Last Modified 1/25/2011

54-72-54 RCSH Quantities 40' OS Roadway

54-72-54 RCSH Quantities  
40' OS Modified Roadway

SUMMARY OF QUANTITIES	
Concrete, Grade 4 (AE)	
Super Structure, 2 1/2" Cl.	653.3 Cu. Yds.
Super Structure, 3" Cl.	664.4 Cu. Yds.
32" Corral Rails w/ curb	29.9 Cu. Yds.
32" Corral Rails no curb	25.1 Cu. Yds.
Reinforcing Steel, Grade 60 (Epoxy Coated)	
Abutments "A"	5204 lbs.
Slabs "S" & "T"	141433 lbs.
Corral Rails w/curb "R", "SC" & "C"	11484 lbs.
Corral Rails no curb "R" & "SC"	10439 lbs.
Spacer Frames	8688 lbs.

Concrete Placing Sequence Diagram



Pouring Sequence		
Location	Clear Cover	
	2-1/2"	3"
End Pour (O)	114.4	116.5
Pier Pour (P)	155.9	158.3
Mid Pour (Q)	87.9	90

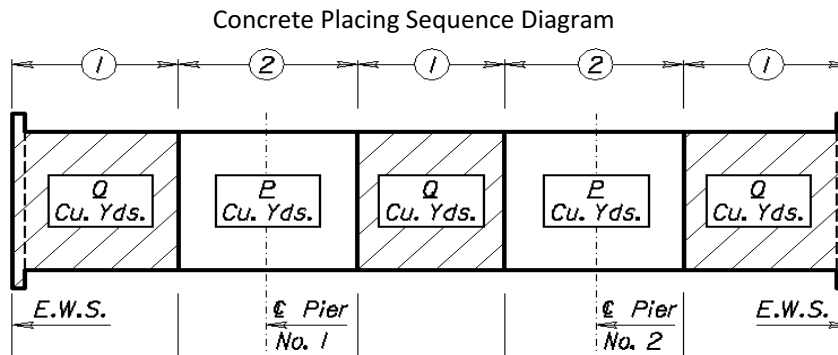
Last Modified 1/25/2011

24-32-24 RCSH Quantities 44' Roadway

24-32-24 RCSH Quantities  
44' Roadway

SUMMARY OF QUANTITIES	
Concrete, Grade 4 (AE)	
Super Structure, 2 1/2" Cl.	252.7 Cu. Yds.
Super Structure, 3" Cl.	257.7 Cu. Yds.
32" Corral Rails w/ curb	13.6 Cu. Yds.
32" Corral Rails no curb	11.5 Cu. Yds.
Reinforcing Steel, Grade 60 (Epoxy Coated)	
Abutments "A"	*5629/5567 lbs.
Slabs "S" & "T"	42082 lbs.
Corral Rails w/curb "R", "SC" & "C"	5417 lbs.
Corral Rails no curb "R" & "SC"	4937 lbs.
Spacer Frames	3303 lbs.

\* Note: 5 Pile Abutment/6 Pile Abutment



Pouring Sequence		
	Clear Cover	
Location	2-1/2"	3"
End Pour (O)	56	57
Pier Pour (P)	50.2	51.2
Mid Pour (Q)	28.9	30

Last Modified 1/20/2011



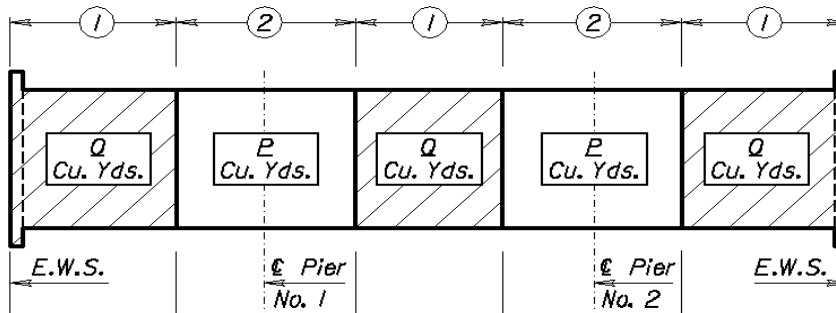
### 30-40-30 RCSH Quantities 44' Roadway

30-40-30 RCSH Quantities  
44' Roadway

SUMMARY OF QUANTITIES	
Concrete, Grade 4 (AE)	
Super Structure, 2 1/2" Cl.	312.9 Cu. Yds.
Super Structure, 3" Cl.	319.4 Cu. Yds.
32" Corral Rails w/ curb	16.9 Cu. Yds.
32" Corral Rails no curb	14.2 Cu. Yds.
Reinforcing Steel, Grade 60 (Epoxy Coated)	
Abutments "A"	*5629/5567 lbs.
Slabs "S" & "T"	60366 lbs.
Corral Rails w/curb "R", "SC" & "C"	6613 lbs.
Corral Rails no curb "R" & "SC"	6037 lbs.
Spacer Frames	4008 lbs.

\* Note: 5 Pile Abutment/6 Pile Abutment

Concrete Placing Sequence Diagram



Pouring Sequence		
Location	Clear Cover	
	2-1/2"	3"
End Pour (O)	66.2	67.5
Pier Pour (P)	63.5	64.8
Mid Pour (Q)	39.5	40.9

Last Modified 1/20/2011

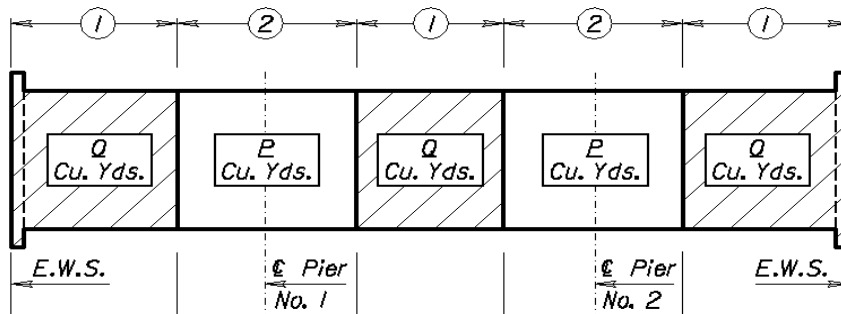
36-48-36 RCSH Quantities 44' Roadway

36-48-36 RCSH Quantities  
44' Roadway

SUMMARY OF QUANTITIES	
Concrete, Grade 4 (AE)	
Super Structure, 2 1/2" Cl.	379.8 Cu. Yds.
Super Structure, 3" Cl.	387.7 Cu. Yds.
32" Corral Rails w/ curb	20.1 Cu. Yds.
32" Corral Rails no curb	16.9 Cu. Yds.
Reinforcing Steel, Grade 60 (Epoxy Coated)	
Abutments "A"	*5629/5567 lbs.
Slabs "S" & "T"	77536 lbs.
Corral Rails w/curb "R", "SC" & "C"	7855 lbs.
Corral Rails no curb "R" & "SC"	7138 lbs.
Spacer Frames	5056 lbs.

\* Note: 5 Pile Abutment/6 Pile Abutment

Concrete Placing Sequence Diagram



Pouring Sequence		
Location	Clear Cover	
	2-1/2"	3"
End Pour (O)	77.6	79.2
Pier Pour (P)	78.3	79.9
Mid Pour (Q)	51.3	52.9

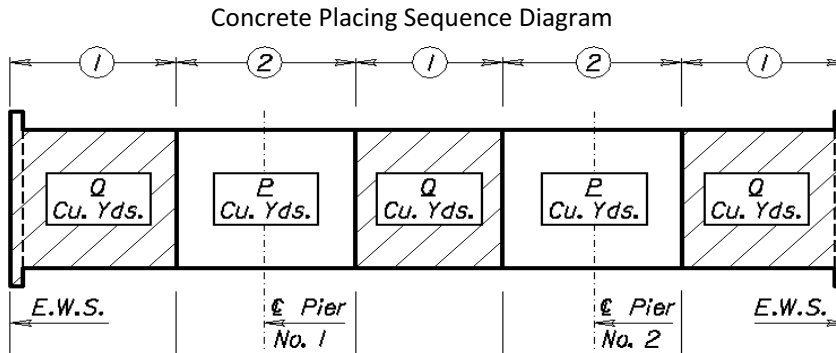
Last Modified 1/20/2011

42-56-42 RCSH Quantities 44' Roadway

42-56-42 RCSH Quantities  
44' Roadway

SUMMARY OF QUANTITIES	
Concrete, Grade 4 (AE)	
Super Structure, 2 1/2" Cl.	455.1 Cu. Yds.
Super Structure, 3" Cl.	464.5 Cu. Yds.
32" Corral Rails w/ curb	23.4 Cu. Yds.
32" Corral Rails no curb	19.6 Cu. Yds.
Reinforcing Steel, Grade 60 (Epoxy Coated)	
Abutments "A"	*5629/5567 lbs.
Slabs "S" & "T"	104320 lbs.
Corral Rails w/curb "R", "SC" & "C"	9046 lbs.
Corral Rails no curb "R" & "SC"	8238 lbs.
Spacer Frames	5779 lbs.

\* Note: 5 Pile Abutment/6 Pile Abutment



Pouring Sequence		
	Clear Cover	
Location	2-1/2"	3"
End Pour (O)	89.6	91.4
Pier Pour (P)	96.7	98.6
Mid Pour (Q)	63.1	64.9

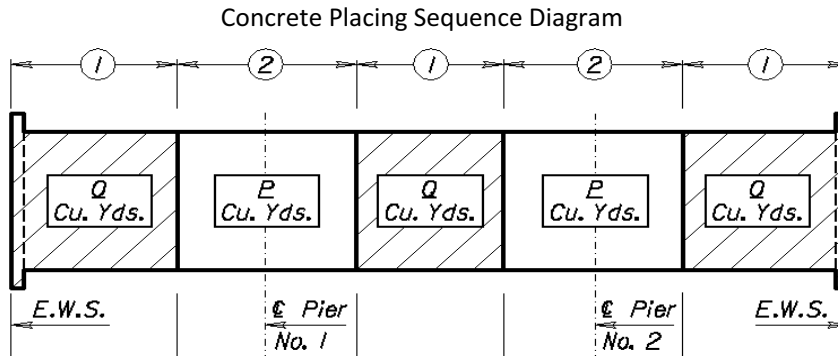
Last Modified 1/24/2011

48-64-48 RCSH Quantities 44' Roadway

48-64-48 RCSH Quantities  
44' Roadway

SUMMARY OF QUANTITIES	
Concrete, Grade 4 (AE)	
Super Structure, 2 1/2" Cl.	574.9 Cu. Yds.
Super Structure, 3" Cl.	585.7 Cu. Yds.
32" Corral Rails w/ curb	26.6 Cu. Yds.
32" Corral Rails no curb	22.3 Cu. Yds.
Reinforcing Steel, Grade 60 (Epoxy Coated)	
Abutments "A"	*5629/5567 lbs.
Slabs "S" & "T"	126109 lbs.
Corral Rails w/curb "R", "SC" & "C"	10265 lbs.
Corral Rails no curb "R" & "SC"	9339 lbs.
Spacer Frames	6963 lbs.

\* Note: 5 Pile Abutment/6 Pile Abutment



Pouring Sequence		
	Clear Cover	
Location	2-1/2"	3"
End Pour (O)	105.8	107.9
Pier Pour (P)	131.5	133.8
Mid Pour (Q)	78.1	80.2

Last Modified 1/24/2011

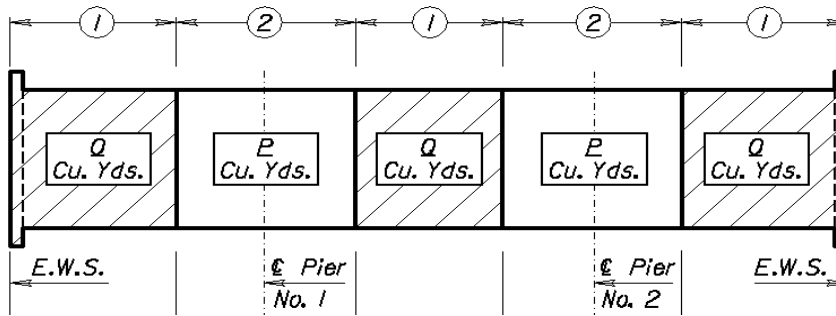
54-72-54 RCSH Quantities 44' Roadway

54-72-54 RCSH Quantities  
44' Roadway

SUMMARY OF QUANTITIES	
Concrete, Grade 4 (AE)	
Super Structure, 2 1/2" Cl.	712.0 Cu. Yds.
Super Structure, 3" Cl.	724.2 Cu. Yds.
32" Corral Rails w/ curb	29.9 Cu. Yds.
32" Corral Rails no curb	25.1 Cu. Yds.
Reinforcing Steel, Grade 60 (Epoxy Coated)	
Abutments "A"	*5629/5567 lbs.
Slabs "S" & "T"	160284 lbs.
Corral Rails w/curb "R", "SC" & "C"	11484 lbs.
Corral Rails no curb "R" & "SC"	10439 lbs.
Spacer Frames	7862 lbs.

\* Note: 5 Pile Abutment/6 Pile Abutment

Concrete Placing Sequence Diagram



Pouring Sequence		
	Clear Cover	
Location	2-1/2"	3"
End Pour (O)	124.8	127.1
Pier Pour (P)	170.6	173.3
Mid Pour (Q)	96.3	98.6

Last Modified 1/24/2011