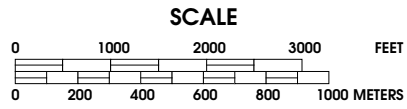


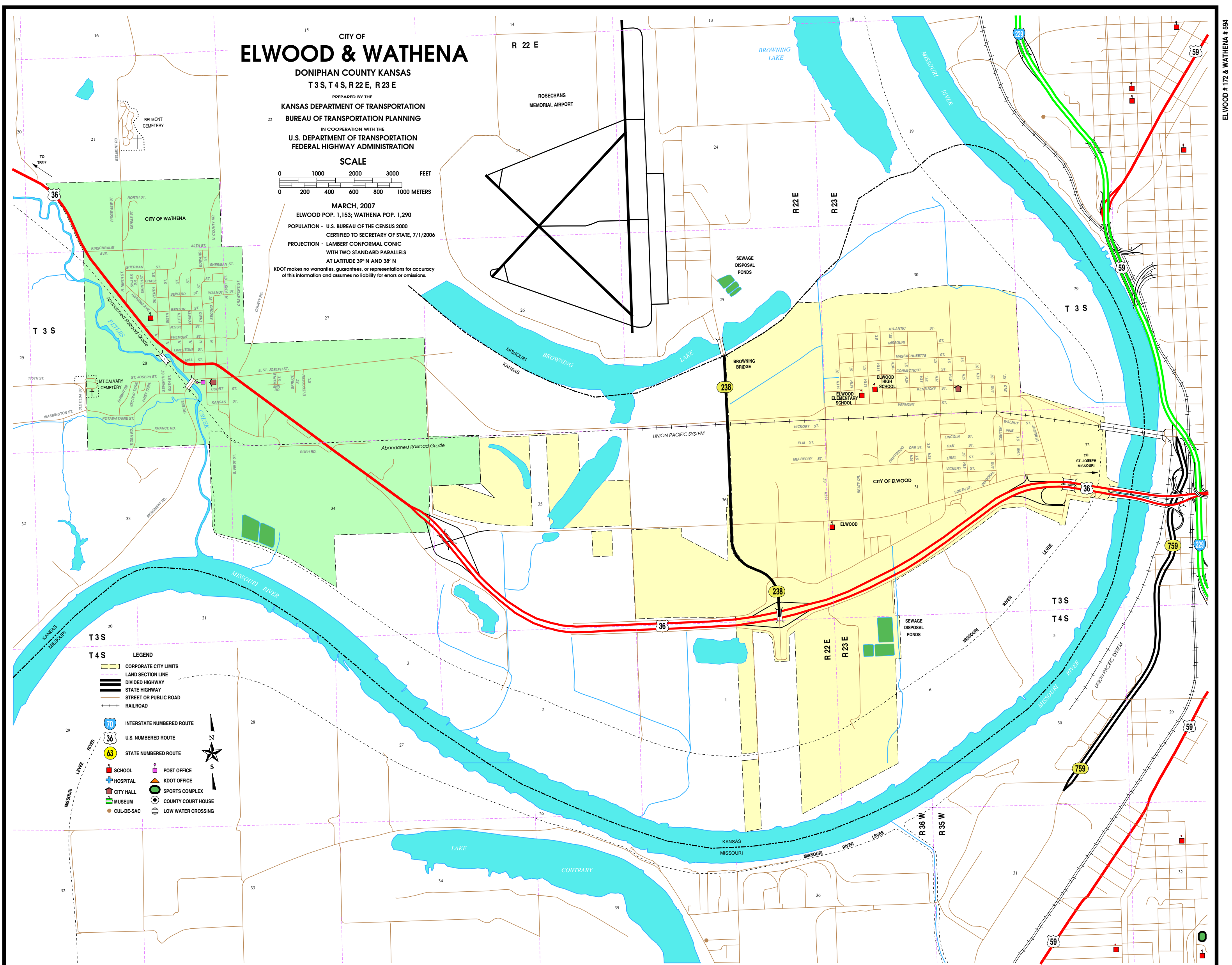
CITY OF ELWOOD & WATHENA

DONIPHAN COUNTY KANSAS
T 3 S, T 4 S, R 22 E, R 23 E

PREPARED BY THE
KANSAS DEPARTMENT OF TRANSPORTATION
BUREAU OF TRANSPORTATION PLANNING
IN COOPERATION WITH THE
U.S. DEPARTMENT OF TRANSPORTATION
FEDERAL HIGHWAY ADMINISTRATION



MARCH, 2007
ELWOOD POP. 1,153; WATHENA POP. 1,290
POPULATION - U.S. BUREAU OF THE CENSUS 2000
CERTIFIED TO SECRETARY OF STATE, 7/1/2006
PROJECTION - LAMBERT CONFORMAL CONIC
WITH TWO STANDARD PARALLELS
AT LATITUDE 39° N AND 38° N
KDOT makes no warranties, guarantees, or representations for accuracy
of this information and assumes no liability for errors or omissions.



LEGEND

- CORPORATE CITY LIMITS
- LAND SECTION LINE
- DIVIDED HIGHWAY
- STATE HIGHWAY
- STREET OR PUBLIC ROAD
- RAILROAD
- INTERSTATE NUMBERED ROUTE
- U.S. NUMBERED ROUTE
- STATE NUMBERED ROUTE
- SCHOOL
- HOSPITAL
- CITY HALL
- MUSEUM
- CUL-DE-SAC
- POST OFFICE
- KDOT OFFICE
- SPORTS COMPLEX
- COUNTY COURT HOUSE
- LOW WATER CROSSING