

CITY OF MANHATTAN RILEY COUNTY KANSAS

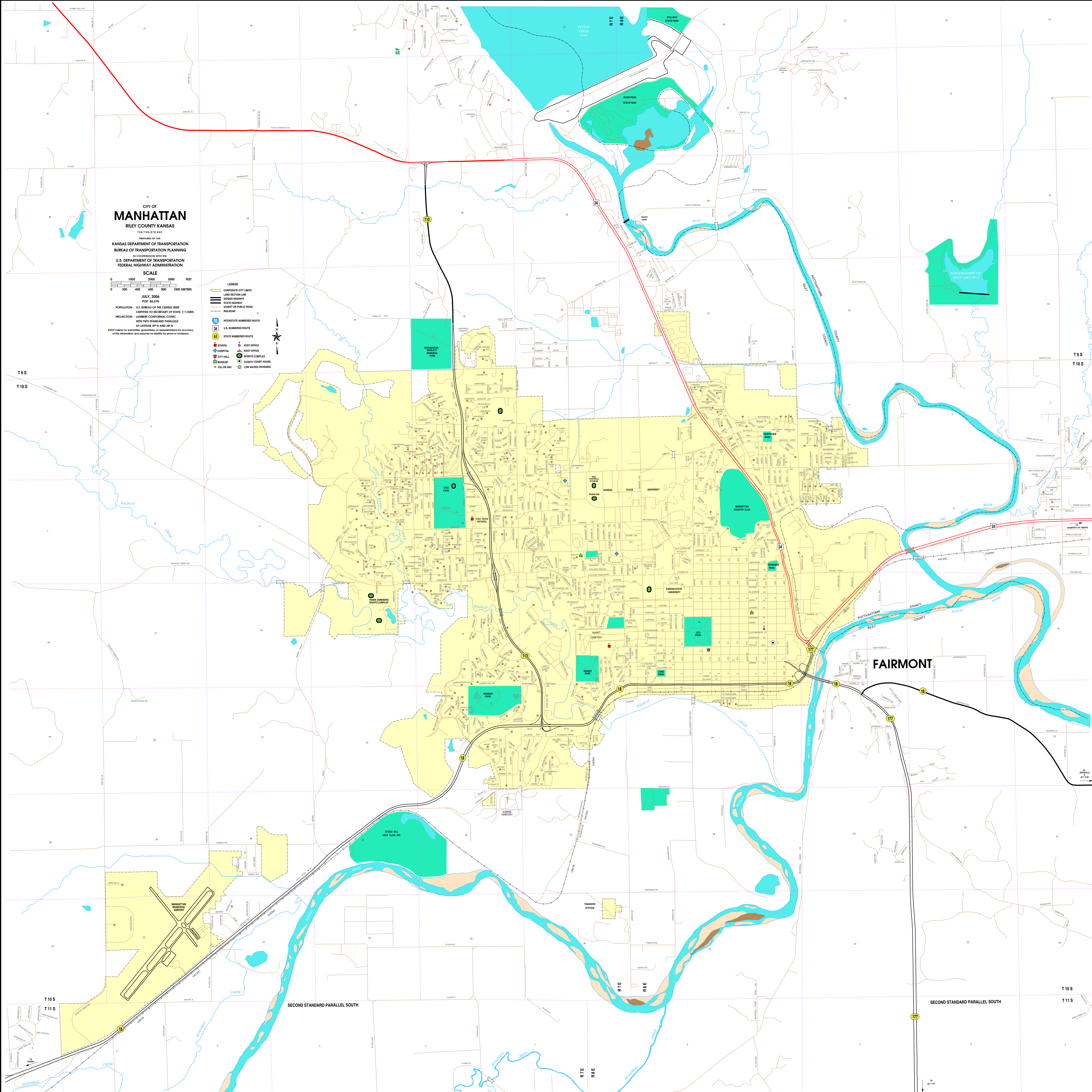
PREPARED BY THE
KANSAS DEPARTMENT OF TRANSPORTATION
BUREAU OF TRANSPORTATION PLANNING
IN COOPERATION WITH THE
U.S. DEPARTMENT OF TRANSPORTATION
FEDERAL HIGHWAY ADMINISTRATION

SCALE
0 1000 2000 3000 FEET
0 200 400 600 800 1000 METERS

DATE: JULY, 2006
POPULATION - U.S. BUREAU OF THE CENSUS 2000
CENSUS TO SECRETARY OF STATE, 7/1/2005
POP. 46,578
PROJECTION - LAMBERT CONFORMAL CONIC
WITH TWO STANDARD PARALLELS
AT LATITUDE 39°N AND 38°N

KDOT makes no warranties, guarantees, or representations for accuracy
of the information and assumes no liability for errors or omissions.

- LEGEND
- CORPORATE CITY LIMITS
 - LAND SECTION LINE
 - DIVIDED HIGHWAY
 - STATE HIGHWAY
 - STREET OR PUBLIC ROAD
 - RAILROAD
 - INTERSTATE NUMBERED ROUTE
 - U.S. NUMBERED ROUTE
 - STATE NUMBERED ROUTE
 - SCHOOL
 - HOSPITAL
 - CITY HALL
 - MUSEUM
 - CUL-DE-SAC
 - POST OFFICE
 - KDOT OFFICE
 - SPORTS COMPLEX
 - COUNTY COURT HOUSE
 - LOW WATER CROSSING



FAIRMONT

SECOND STANDARD PARALLEL SOUTH

SECOND STANDARD PARALLEL SOUTH