

# CITY OF NICKERSON

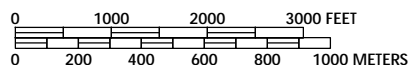
RENO COUNTY KANSAS

T 22 S, R 7 W

PREPARED BY THE  
KANSAS DEPARTMENT OF TRANSPORTATION  
BUREAU OF TRANSPORTATION PLANNING

IN COOPERATION WITH THE  
U.S. DEPARTMENT OF TRANSPORTATION  
FEDERAL HIGHWAY ADMINISTRATION

SCALE

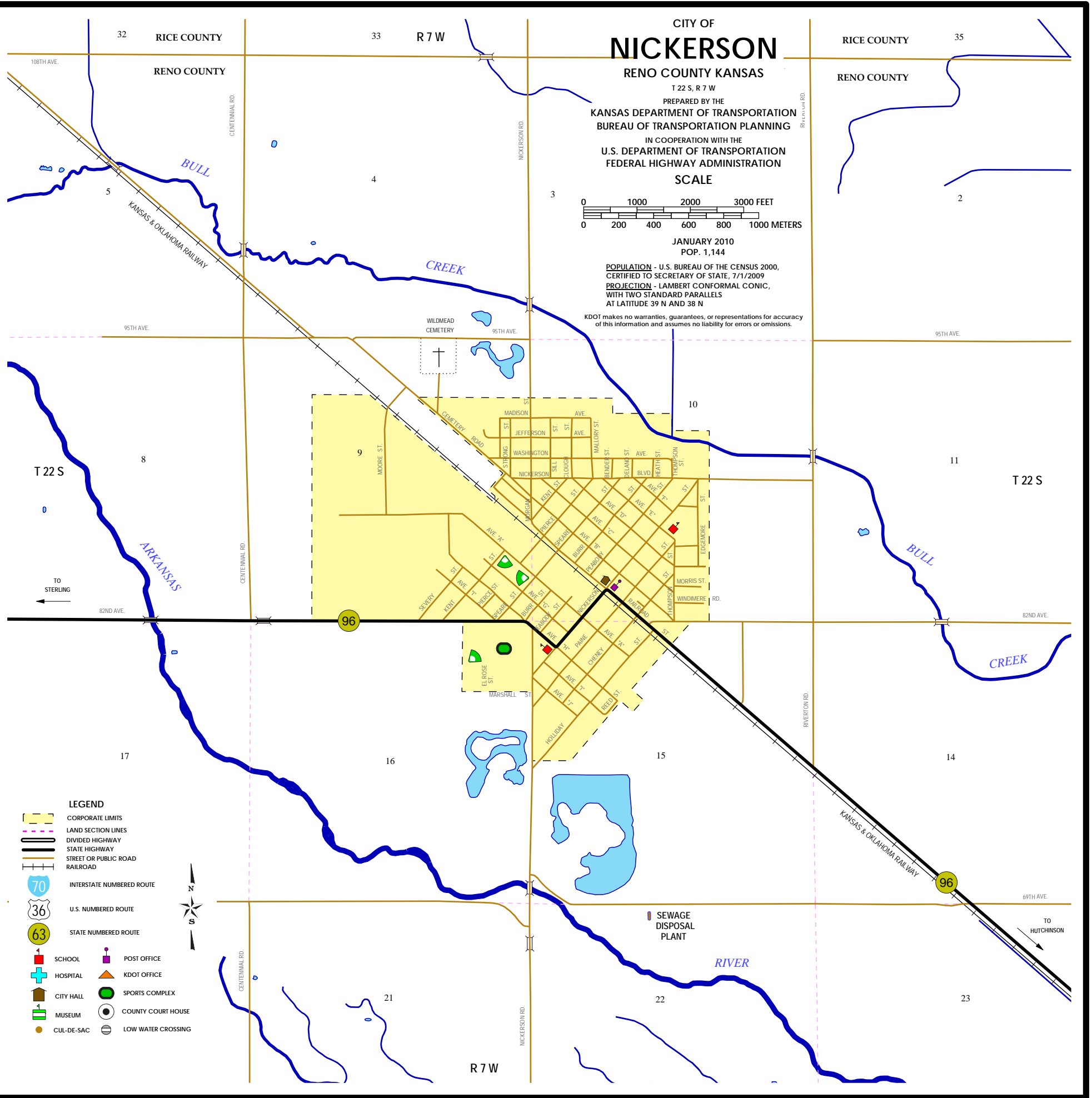


JANUARY 2010

POP. 1,144

**POPULATION** - U.S. BUREAU OF THE CENSUS 2000,  
CERTIFIED TO SECRETARY OF STATE, 7/1/2009  
**PROJECTION** - LAMBERT CONFORMAL CONIC,  
WITH TWO STANDARD PARALLELS  
AT LATITUDE 39 N AND 38 N

KDOT makes no warranties, guarantees, or representations for accuracy  
of this information and assumes no liability for errors or omissions.



- LEGEND**
- CORPORATE LIMITS
  - LAND SECTION LINES
  - DIVIDED HIGHWAY
  - STATE HIGHWAY
  - STREET OR PUBLIC ROAD
  - RAILROAD
  - INTERSTATE NUMBERED ROUTE
  - U.S. NUMBERED ROUTE
  - STATE NUMBERED ROUTE
  - SCHOOL
  - HOSPITAL
  - CITY HALL
  - MUSEUM
  - CUL-DE-SAC
  - POST OFFICE
  - KDOT OFFICE
  - SPORTS COMPLEX
  - COUNTY COURT HOUSE
  - LOW WATER CROSSING