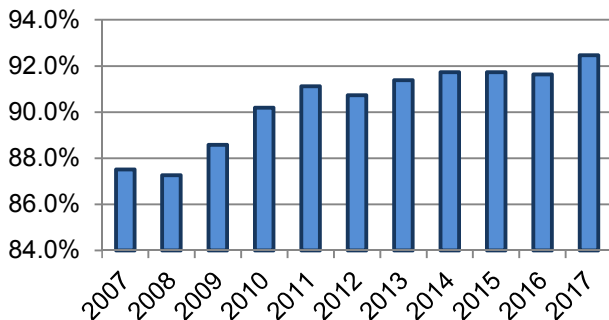


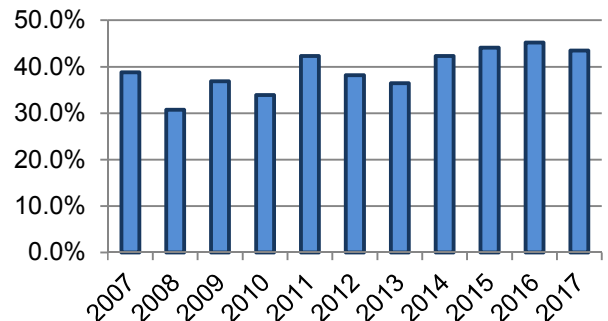
All Occupants* in Crashes - Safety Restraint Usage** History

Years												
	2007	2008	2009	2010	2011	2012	2013	2014	2015	2016	2017	Totals
Occupants in Crashes	157,425	145,117	133,518	131,820	129,422	125,730	127,582	128,899	132,889	135,040	125,710	1,473,152
Occupants Using Safety Belts	137,762	126,626	118,265	118,886	117,924	114,078	116,599	118,241	121,898	123,744	116,238	1,330,261
% Using Safety Belts	87.5%	87.3%	88.6%	90.2%	91.1%	90.7%	91.4%	91.7%	91.7%	91.6%	92.5%	90.3%
Deaths	343	309	304	363	312	317	277	300	272	325	359	3,481
Using Safety Belts	133	95	112	123	132	121	101	127	120	147	156	1,367
% Using Safety Belts	38.8%	30.7%	36.8%	33.9%	42.3%	38.2%	36.5%	42.3%	44.1%	45.2%	43.5%	39.3%
Injuries	20,882	19,099	17,811	17,215	16,676	17,023	16,411	16,136	16,562	16,647	15,334	189,796
Using Safety Belts	16,558	15,095	14,147	14,191	14,059	14,333	14,113	13,984	14,430	14,481	13,496	158,887
% Using Safety Belts	79.3%	79.0%	79.4%	82.4%	84.3%	84.2%	86.0%	86.7%	87.1%	87.0%	88.0%	83.7%
Unharmed or Unknown	136,200	125,709	115,403	114,242	112,433	108,390	110,894	112,463	116,055	118,061	110,009	1,279,859
Using Safety Belts	121,071	111,436	104,006	104,572	103,732	99,624	102,385	104,130	107,348	109,114	102,583	1,170,001
% Using Safety Belts	88.9%	88.6%	90.1%	91.5%	92.3%	91.9%	92.3%	92.6%	92.5%	92.4%	93.2%	91.4%

Percent of Occupants Safety Belt Use All Ages



Percent of Occupant Safety Belt Use Deaths: All Ages



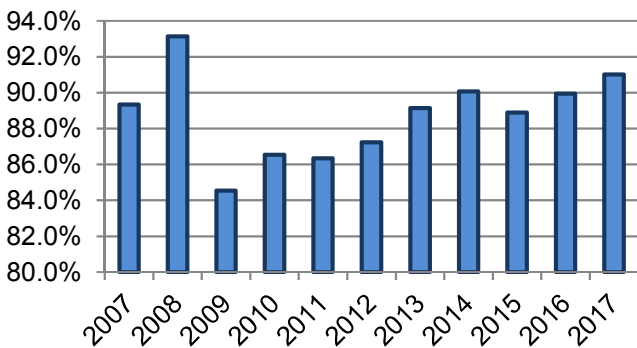
*Excludes occupants in vehicle body types: motorcycle, moped, farm equipment, all-terrain vehicle, bus, train, other, and unknown

**Excludes airbag only, helmet, eye protection, and unknown restraint use

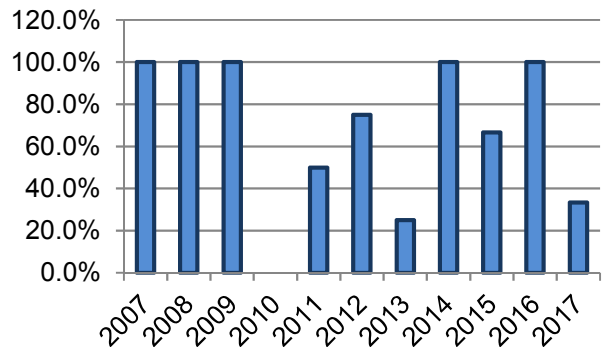
Occupants* 1-3 Years Old in Crashes - Safety Restraint Usage** History

Years												
	2007	2008	2009	2010	2011	2012	2013	2014	2015	2016	2017	Totals
Occupants in Crashes	4,615	3,991	3,847	3,490	3,545	3,712	3,691	3,618	3,782	3,740	3,416	41,447
Occupants Using Safety Belts	4,123	3,717	3,252	3,020	3,061	3,238	3,290	3,259	3,362	3,364	3,109	36,795
% Using Safety Belts	89.3%	93.1%	84.5%	86.5%	86.3%	87.2%	89.1%	90.1%	88.9%	89.9%	91.0%	88.8%
Deaths	6	1	4	3	4	4	4	1	3	1	3	34
Using Safety Belts	6	1	4	0	2	3	1	1	2	1	1	22
% Using Safety Belts	100.0%	100.0%	100.0%	0.0%	50.0%	75.0%	25.0%	100.0%	66.7%	100.0%	33.3%	64.7%
Injuries	314	275	288	212	273	290	255	232	251	263	232	2,885
Using Safety Belts	257	234	219	168	221	221	208	200	208	225	206	2,367
% Using Safety Belts	81.8%	85.1%	76.0%	79.2%	81.0%	76.2%	81.6%	86.2%	82.9%	85.6%	88.8%	82.0%
Unharmed or Unknown	4,295	3,715	3,555	3,275	3,268	3,418	3,432	3,385	3,528	3,476	3,181	38,528
Using Safety Belts	3,860	3,482	3,029	2,852	2,838	3,014	3,081	3,058	3,152	3,138	2,902	34,406
% Using Safety Belts	89.9%	93.7%	85.2%	87.1%	86.8%	88.2%	89.8%	90.3%	89.3%	90.3%	91.2%	89.3%

Percent of Occupants Safety Belt Use All Ages



Percent of Occupant Safety Belt Use Deaths: All Ages



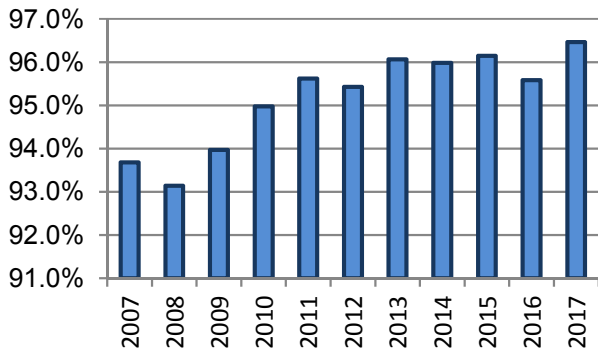
*Excludes occupants in vehicle body types: motorcycle, moped, farm equipment, all-terrain vehicle, bus, train, other, and unknown

**Restraint usage: infant, child, or booster seat, with or without airbag deployment.

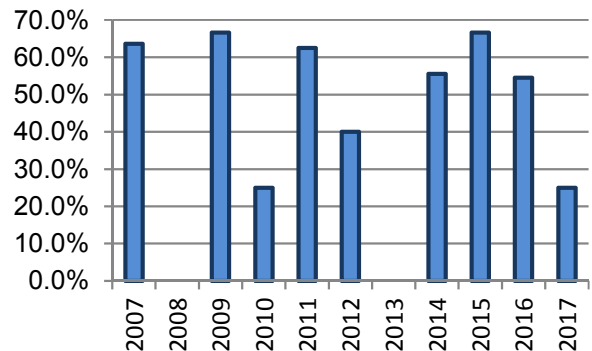
Occupants* 4-13 Years Old in Crashes - Safety Restraint Usage** History

Years												
	2007	2008	2009	2010	2011	2012	2013	2014	2015	2016	2017	Totals
Occupants in Crashes	10,163	9,385	8,370	7,025	7,670	7,704	7,987	8,260	8,234	8,335	7,859	90,992
Occupants Using Safety Belts	9,521	8,741	7,865	6,672	7,334	7,352	7,673	7,928	7,917	7,967	7,581	86,551
% Using Safety Belts	93.7%	93.1%	94.0%	95.0%	95.6%	95.4%	96.1%	96.0%	96.2%	95.6%	96.5%	95.1%
Deaths	11	5	3	4	8	10	5	9	6	11	8	80
Using Safety Belts	7	0	2	1	5	4	0	5	4	6	2	36
% Using Safety Belts	63.6%	0.0%	66.7%	25.0%	62.5%	40.0%	0.0%	55.6%	66.7%	54.5%	25.0%	45.0%
Injuries	1,029	1,009	921	714	790	906	872	786	829	891	788	9,535
Using Safety Belts	857	848	783	620	713	799	796	715	747	804	720	8,402
% Using Safety Belts	83.3%	84.0%	85.0%	86.8%	90.3%	88.2%	91.3%	91.0%	90.1%	90.2%	91.4%	88.1%
Unharmd or Unknown	9,123	8,371	7,446	6,307	6,872	6,788	7,110	7,465	7,399	7,433	7,063	81,377
Using Safety Belts	8,657	7,893	7,080	6,051	6,616	6,549	6,877	7,208	7,166	7,157	6,859	78,113
% Using Safety Belts	94.9%	94.3%	95.1%	95.9%	96.3%	96.5%	96.7%	96.6%	96.9%	96.3%	97.1%	96.0%

Percent of Occupants Safety Belt Use All Ages



Percent of Occupant Safety Belt Use Deaths: All Ages



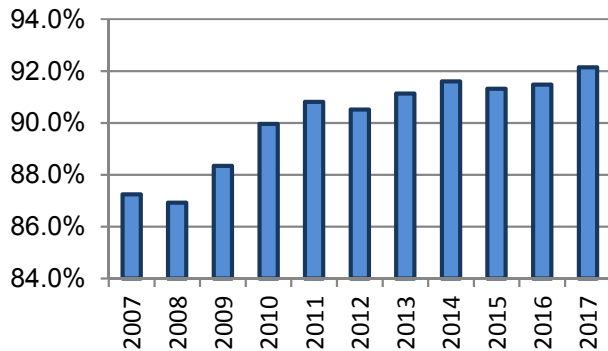
*Excludes occupants in vehicle body types: motorcycle, moped, farm equipment, all-terrain vehicle, bus, train, other, and unknown

**Excludes airbag only, helmet, eye protection, and unknown restraint use

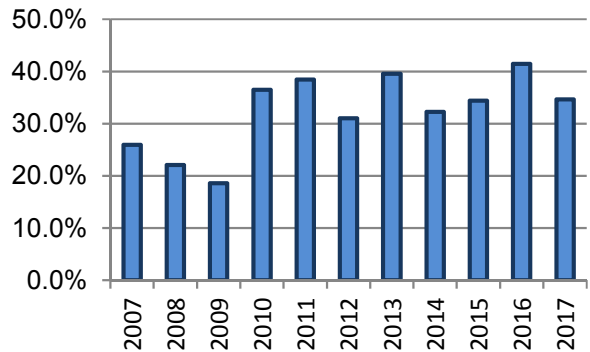
All Occupants* in Crashes - Safety Restraint Usage** History Where the Speed Limit is Less Than or Equal to 45 mph

Years												
	2007	2008	2009	2010	2011	2012	2013	2014	2015	2016	2017	Totals
Occupants in Crashes	101,197	94,798	85,121	81,777	81,113	81,627	82,030	82,281	83,515	86,351	78,414	938,224
Occupants Using Safety Belts	88,292	82,402	75,202	73,564	73,664	73,887	74,752	75,372	76,260	78,990	72,258	844,643
% Using Safety Belts	87.2%	86.9%	88.3%	90.0%	90.8%	90.5%	91.1%	91.6%	91.3%	91.5%	92.1%	90.0%
Deaths	54	68	43	63	52	58	48	62	64	70	75	657
Using Safety Belts	14	15	8	23	20	18	19	20	22	29	26	214
% Using Safety Belts	25.9%	22.1%	18.6%	36.5%	38.5%	31.0%	39.6%	32.3%	34.4%	41.4%	34.7%	32.6%
Injuries	12,046	11,357	10,372	9,589	9,488	9,977	9,446	9,303	9,538	9,666	8,783	109,565
Using Safety Belts	9,934	9,316	8,531	8,159	8,253	8,702	8,360	8,312	8,513	8,693	7,949	94,722
% Using Safety Belts	82.5%	82.0%	82.3%	85.1%	87.0%	87.2%	88.5%	89.3%	89.3%	89.9%	90.5%	86.5%
Unharmful or Unknown	89,097	83,373	74,706	72,125	71,573	71,592	72,536	72,916	73,913	76,613	69,552	827,996
Using Safety Belts	78,344	73,071	66,663	65,382	65,391	65,167	66,373	67,040	67,725	70,268	64,282	749,706
% Using Safety Belts	87.9%	87.6%	89.2%	90.7%	91.4%	91.0%	91.5%	91.9%	91.6%	91.7%	92.4%	90.5%

Percent of Occupants Safety Belt Use All Ages



Percent of Occupant Safety Belt Use Deaths: All Ages



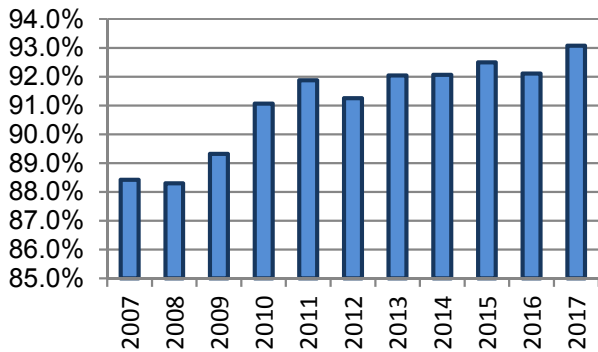
*Excludes occupants in vehicle body types: motorcycle, moped, farm equipment, all-terrain vehicle, bus, train, other, and unknown

**Excludes airbag only, helmet, eye protection, and unknown restraint use

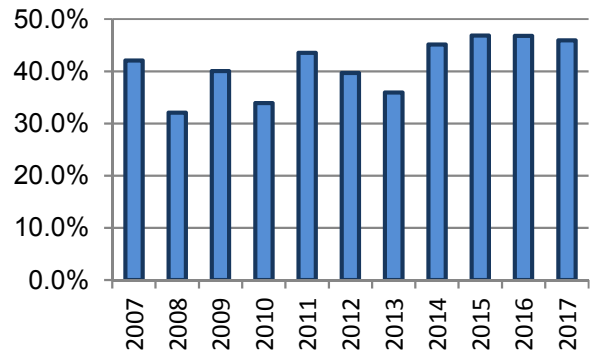
All Occupants* in Crashes - Safety Restraint Usage** History Where the Speed Limit is Greater Than 45 mph

Years												
	2007	2008	2009	2010	2011	2012	2013	2014	2015	2016	2017	Totals
Occupants in Crashes	52,936	48,030	45,625	45,757	44,822	42,499	44,530	45,204	47,617	46,922	45,776	509,718
Occupants Using Safety Belts	46,806	42,408	40,755	41,666	41,179	38,782	40,986	41,618	44,045	43,217	42,604	464,066
% Using Safety Belts	88.4%	88.3%	89.3%	91.1%	91.9%	91.3%	92.0%	92.1%	92.5%	92.1%	93.1%	91.0%
Deaths	283	237	257	295	255	257	228	237	207	252	281	2,789
Using Safety Belts	119	76	103	100	111	102	82	107	97	118	129	1,144
% Using Safety Belts	42.0%	32.1%	40.1%	33.9%	43.5%	39.7%	36.0%	45.1%	46.9%	46.8%	45.9%	41.0%
Injuries	8,452	7,483	7,116	7,169	6,766	6,879	6,865	6,722	6,867	6,821	6,412	77,552
Using Safety Belts	6,351	5,609	5,379	5,687	5,445	5,489	5,672	5,581	5,777	5,645	5,426	62,061
% Using Safety Belts	75.1%	75.0%	75.6%	79.3%	80.5%	79.8%	82.6%	83.0%	84.1%	82.8%	84.6%	80.0%
Unharmful or Unknown	44,201	40,310	38,252	38,293	37,800	35,363	37,437	38,245	40,543	39,844	39,079	429,367
Using Safety Belts	40,336	36,723	35,273	35,879	35,622	33,191	35,232	35,930	38,171	37,452	37,047	400,856
% Using Safety Belts	91.3%	91.1%	92.2%	93.7%	94.2%	93.9%	94.1%	93.9%	94.1%	94.0%	94.8%	93.4%

Percent of Occupants Safety Belt Use All Ages



Percent of Occupant Safety Belt Use Deaths: All Ages



*Excludes occupants in vehicle body types: motorcycle, moped, farm equipment, all-terrain vehicle, bus, train, other, and unknown

**Excludes airbag only, helmet, eye protection, and unknown restraint use