

South Central District Office  
500 N. Hendricks  
Hutchinson, KS 67504-0769



phone: 620-663-3361  
fax: 620-663-1804  
[www.ksdot.org](http://www.ksdot.org)

Julie Lorenz, Secretary

Laura Kelly, Governor

IMMEDIATE RELEASE

Aug. 5, 2021

For more information: Tim Potter

620-860-7389; mobile: 620-727-2278; [Tim.Potter@ks.gov](mailto:Tim.Potter@ks.gov)

### **Part of 16<sup>th</sup> Road at Sterling closing during day for K-14 job**

Part of 16<sup>th</sup> Road on the northeast side of Sterling -- between Avenue U and Avenue V -- will be closed during the day for the next four weeks.

That section of 16<sup>th</sup> will be closed during that period from about 7 a.m. to 6 p.m. Monday through Friday and possibly some Saturdays.

The closure is needed for continued construction on the Rice County portion of the K-14 realignment.

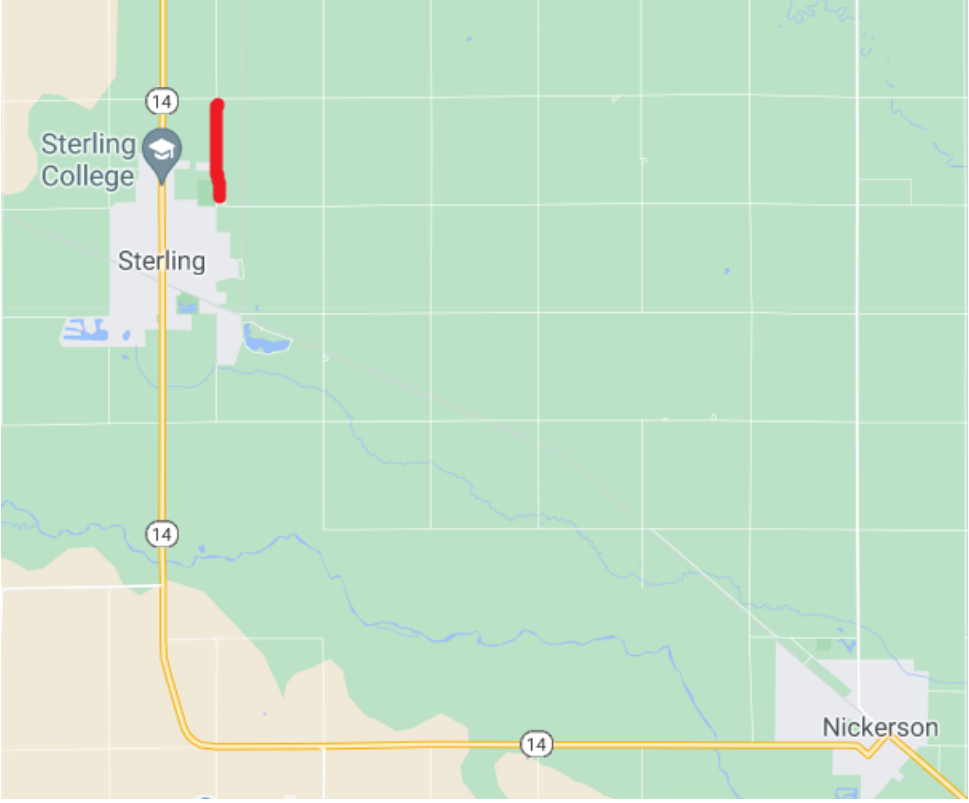
**The first map below shows the section of 16<sup>th</sup>, marked in red, that is closing during that time. A second map below shows the entire realignment route in Rice and Reno counties.**

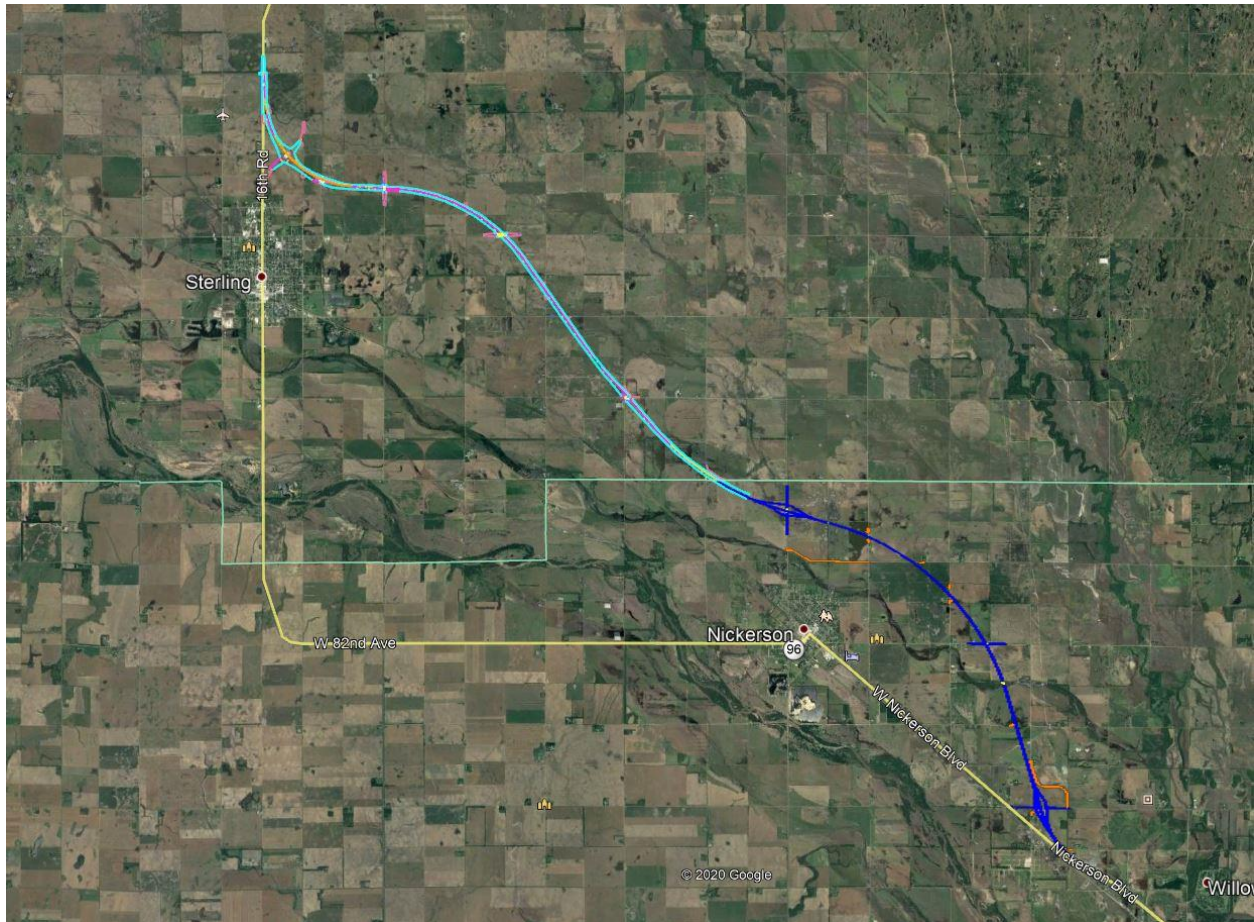
The Kansas Department of Transportation realignment project started this spring. This a 15-mile, \$81.7 million realignment of K-14. The work stretches from Hutchinson, to Nickerson, to Sterling. The project is expected to be completed by June 16, 2023. Bob Bergkamp Construction Co. Inc., of Wichita, is the primary contractor.

During the work, traffic will be able to continue to use the existing K-14/96 alignment in the two counties.

The Rice County portion of the realignment will be from the Reno/Rice county line to just north of the K-96/Avenue T junction. The length is about 8 miles.

The Reno County portion of the realignment will be from about 4.5 miles southeast of Nickerson northwest to the Reno/Rice county line. The length is a little over 7 miles.





####

This information can be made available in alternative accessible formats upon request.

For information about obtaining an alternative format, contact the KDOT Division of Communications, 700 SW Harrison St., 2<sup>nd</sup> Fl West, Topeka, KS 66603-3754 or phone 785-296-3585 (Voice)/Hearing Impaired – 711.

Click below to connect to KDOT's Social Networks:

