

South Central District Office
500 N. Hendricks
Hutchinson, KS 67504-0769



phone: 620-663-3361
fax: 620-663-1804
www.ksdot.org

Julie Lorenz, Secretary

Laura Kelly, Governor

IMMEDIATE RELEASE

July 30, 2021

For more information: Tim Potter

620-860-7389; mobile: 620-727-2278; Tim.Potter@ks.gov

Part of 17th Road near Sterling is closing for K-14 realignment project

Part of 17th Road northeast of Sterling, between Avenue U and Avenue V, will close for about year starting Monday, Aug. 2.

The closure is needed for continued construction on the Rice County portion of the K-14 realignment. The closure will allow for construction of a bridge on the new realignment. When the closed section of 17th reopens in about a year, the road will cross the new alignment on an overpass.

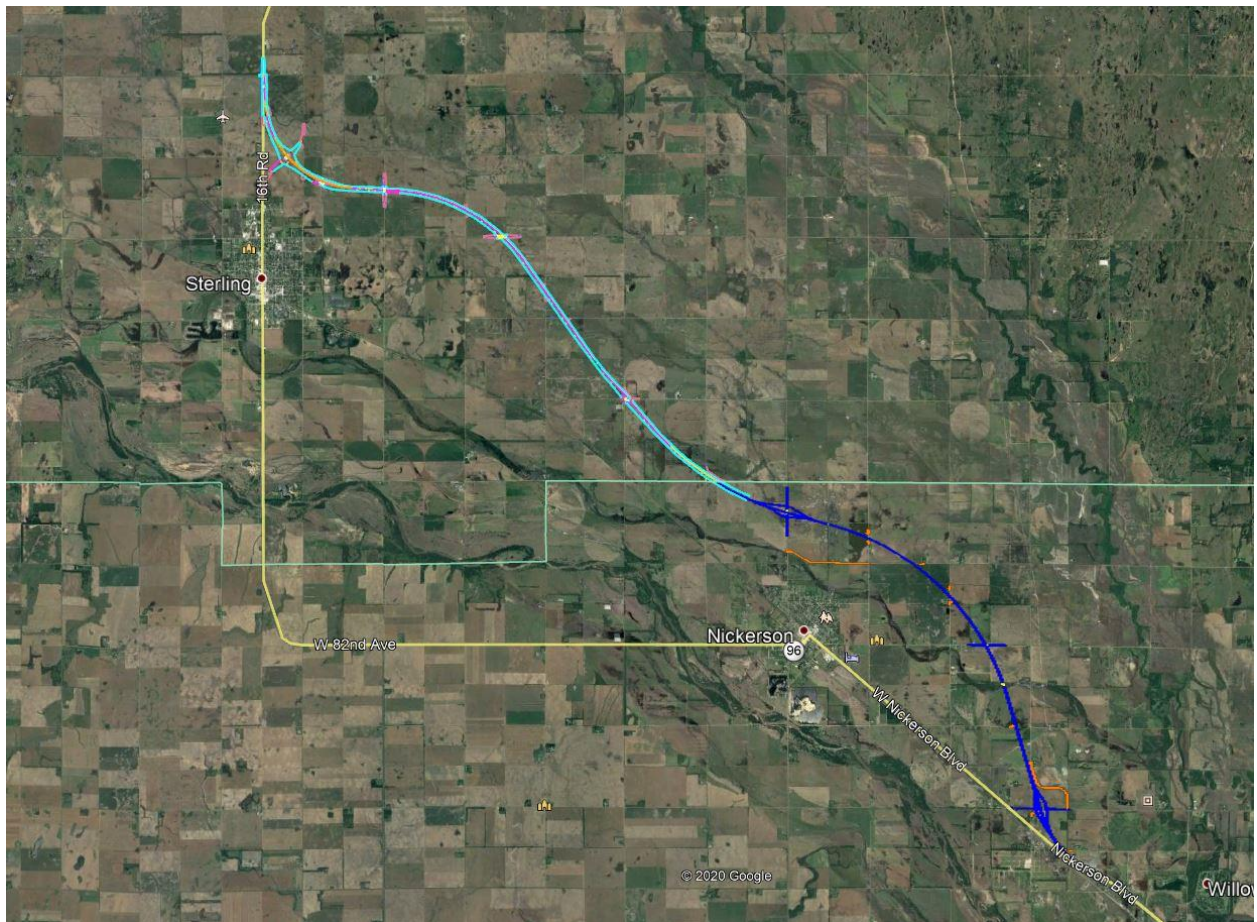
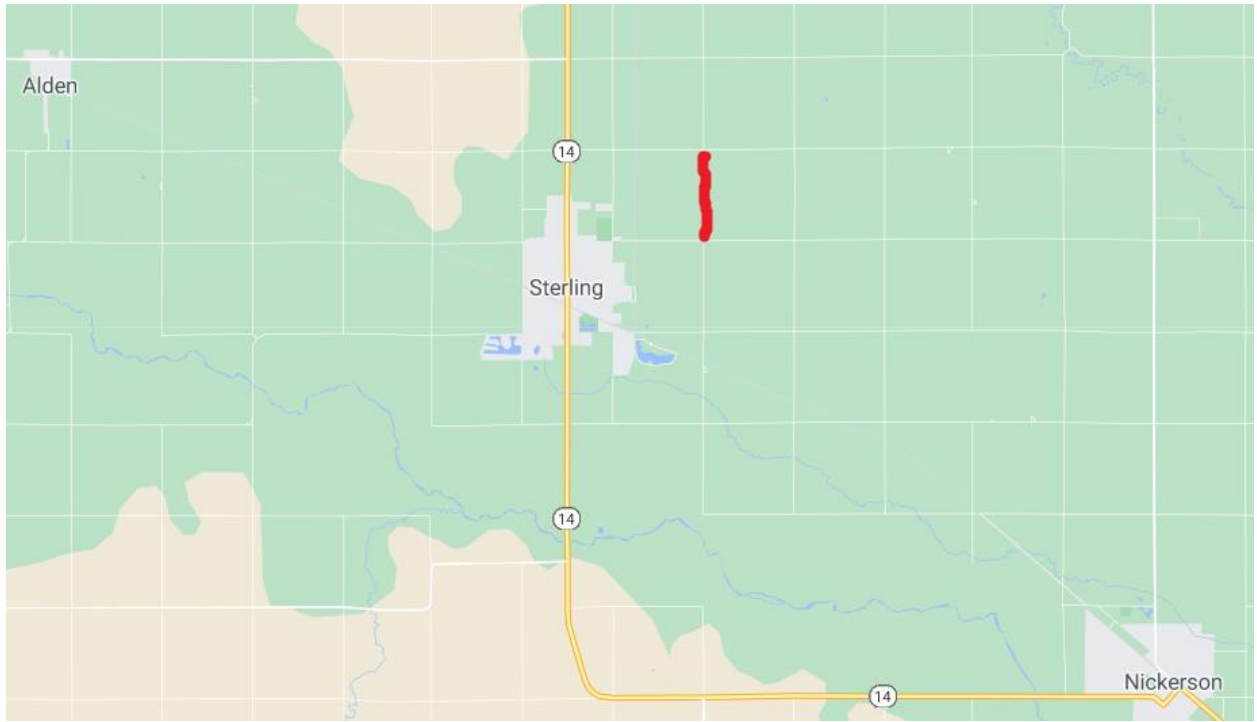
The first map below shows the section of 17th, marked in red, that is closing. A second map below shows the entire realignment route in Rice and Reno counties.

The Kansas Department of Transportation realignment project started this spring. This a 15-mile, \$81.7 million realignment of K-14. The work stretches from Hutchinson, to Nickerson, to Sterling. The project is expected to be completed by June 16, 2023. Bob Bergkamp Construction Co. Inc., of Wichita, is the primary contractor.

During the work, traffic will be able to continue to use the existing K-14/96 alignment in the two counties.

The Rice County portion of the realignment will be from the Reno/Rice county line to just north of the K-96/Avenue T junction. The length is about 8 miles.

The Reno County portion of the realignment will be from about 4.5 miles southeast of Nickerson northwest to the Reno/Rice county line. The length is a little over 7 miles.



####

This information can be made available in alternative accessible formats upon request.

For information about obtaining an alternative format, contact the KDOT Division of Communications,
700 SW Harrison St., 2nd Fl West, Topeka, KS 66603-3754 or phone 785-296-3585 (Voice)/Hearing Impaired – 711.

Click below to connect to KDOT's Social Networks:

