

South Central District Office
500 N. Hendricks
Hutchinson, KS 67504-0769



phone: 620-663-3361
fax: 620-663-1804
www.ksdot.org

Julie Lorenz, Secretary

Laura Kelly, Governor

IMMEDIATE RELEASE

July 21, 2021

For more information: Tim Potter

620-860-7389; mobile: 620-727-2278; Tim.Potter@ks.gov

Some Rice County road sections closed for K-14 realignment

Sections of four Rice County roads have been closed to through traffic to allow construction of a major K-14 realignment project.

In Rice County, going from south to north: The section of Avenue X currently closed for construction will reopen as an overpass in about a year; the section of Avenue W currently closed will be closed permanently; the section of Avenue V currently closed will reopen as an overpass in about a year; and the section of Avenue U that is closed will remain closed permanently.

The first map below (and attached) shows the road section closures for realignment work currently under way in Rice County.

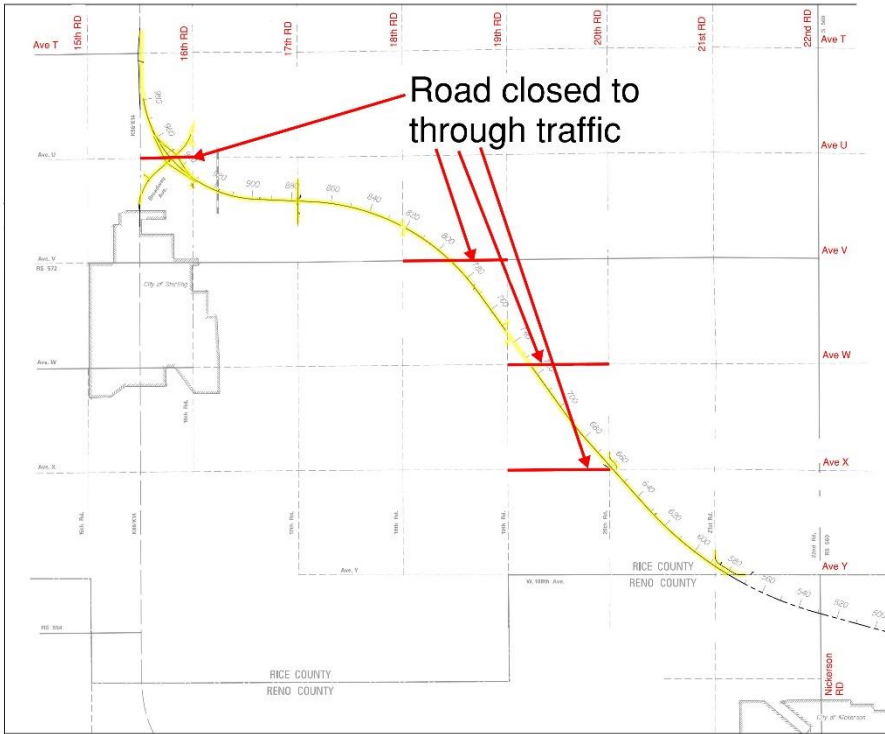
The Kansas Department of Transportation project started this spring. This a 15-mile, \$81.7 million realignment of K-14 in Reno and Rice counties. The work stretches from Hutchinson, to Nickerson, to Sterling. The project is expected to be completed by June 16, 2023. Bob Bergkamp Construction Co. Inc., of Wichita, is the primary contractor.

During the work, traffic will be able to continue to use the existing K-14/96 alignment in the two counties.

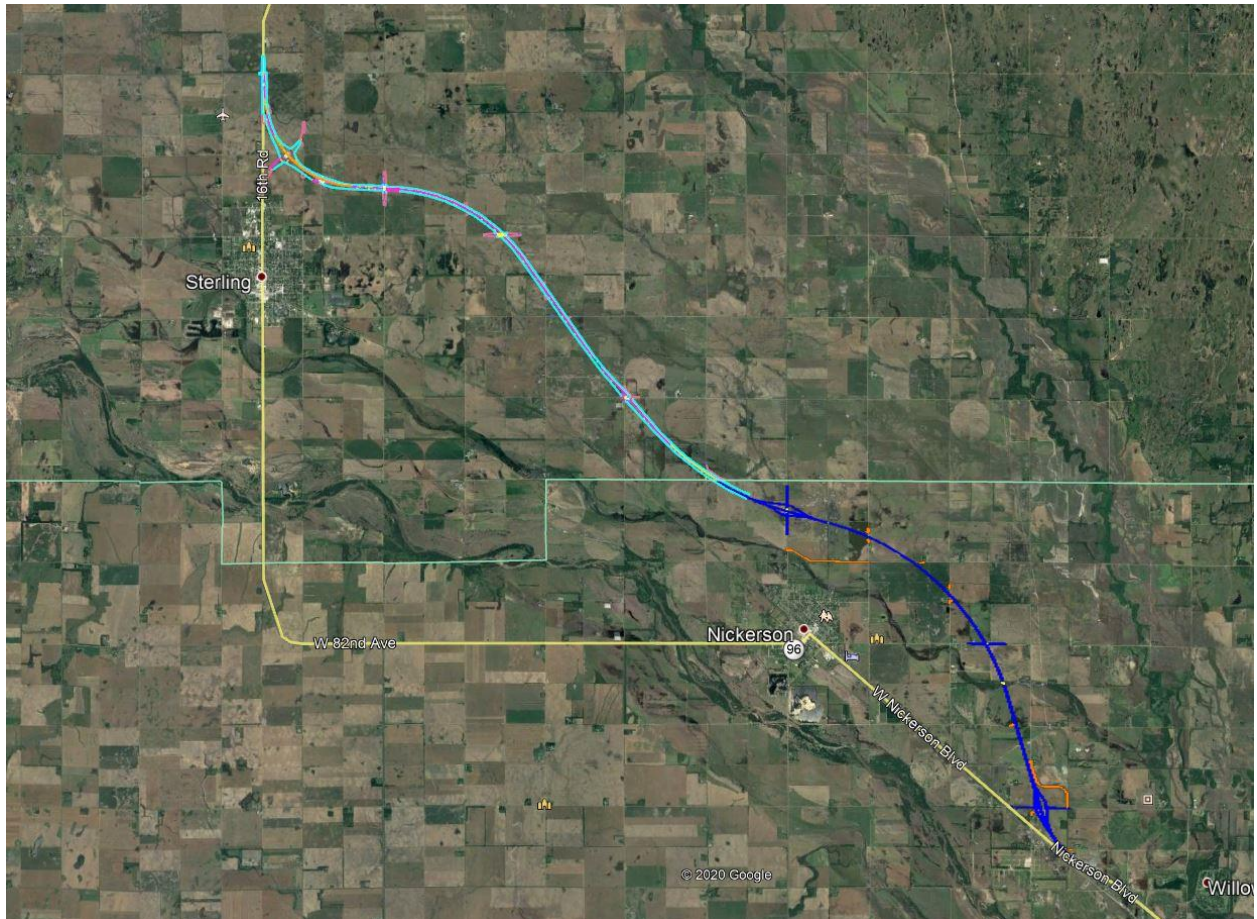
The Rice County portion of the realignment will be from the Reno/Rice county line to just north of the K-96/Avenue T junction. The length is 8.08 miles.

The Reno County portion of the realignment will be from 4.45 miles southeast of Nickerson northwest to the Reno/Rice county line. The length is 7.34 miles.

A second map below shows the entire realignment route.



Rice County road closures for construction of K-14 realignment



####

This information can be made available in alternative accessible formats upon request.

For information about obtaining an alternative format, contact the KDOT Division of Communications,
700 SW Harrison St., 2nd Fl West, Topeka, KS 66603-3754 or phone 785-296-3585 (Voice)/Hearing Impaired – 711.

Click below to connect to KDOT's Social Networks:

