

South Central District Office
500 N. Hendricks
Hutchinson, KS 67504-0769



phone: 620-663-3361
fax: 620-663-1804
www.ksdot.org

Julie Lorenz, Secretary

Laura Kelly, Governor

IMMEDIATE RELEASE

May 25, 2021

For more information: Tim Potter

620-860-7389; mobile: 620-727-2278; Tim.Potter@ks.gov

Part of Avenue V east of Sterling closing for bridge construction

A section of Avenue V east of Sterling will be closed for bridge construction for about a year beginning Tuesday, June 1.

The part of Avenue V that will close is between 18th Road and 19th Road.

The bridge construction is part of an \$81.7 million, 15-mile realignment of K-14 in Reno and Rice counties that recently started. Bob Bergkamp Construction Co. Inc., of Wichita, is the primary contractor for the Kansas Department of Transportation project.

During the realignment construction, traffic will be able to continue to use the existing K-14/96 alignment in the two counties.

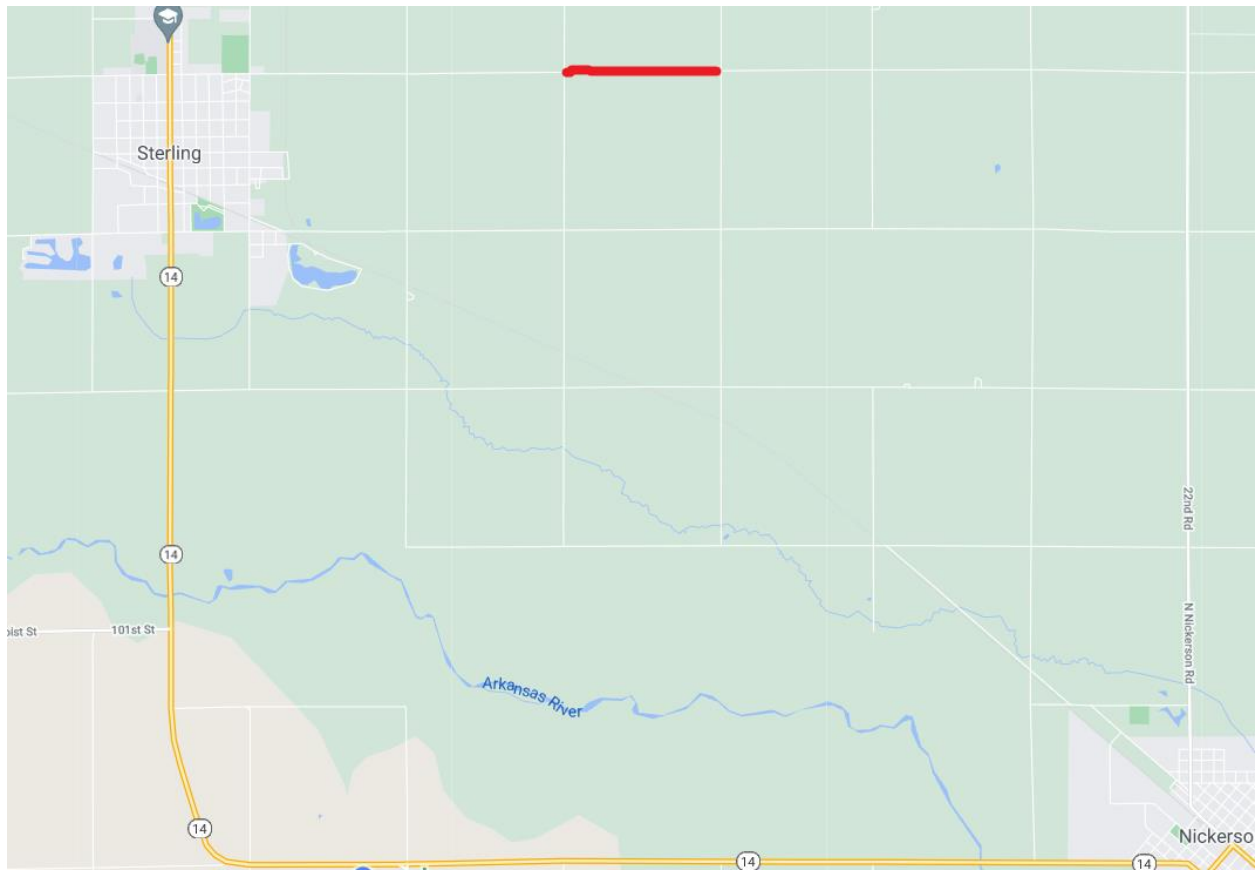
The Reno County portion of the realignment will be from 4.45 miles southeast of Nickerson northwest to the Reno/Rice county line. The length is 7.34 miles.

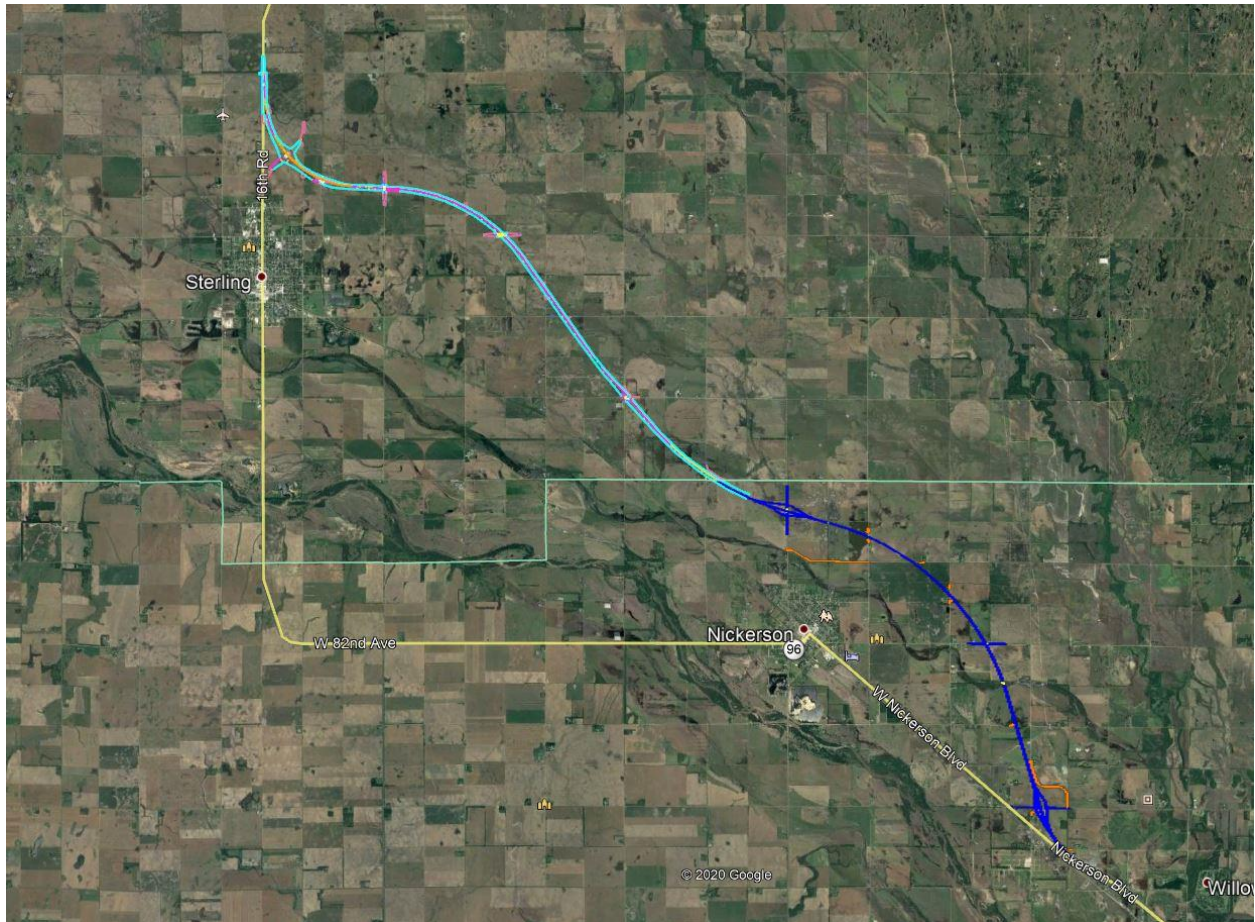
The Rice County portion will be from the Reno/Rice county line to just north of the K-96/Avenue T junction. The length is 8.08 miles.

The project is due to be completed by June 16, 2023.

The red line on the map immediately below shows the section of Avenue V that will be closed.

A second map, at the bottom, shows the route of the new alignment.





####

This information can be made available in alternative accessible formats upon request.

For information about obtaining an alternative format, contact the KDOT Division of Communications, 700 SW Harrison St., 2nd Fl West, Topeka, KS 66603-3754 or phone 785-296-3585 (Voice)/Hearing Impaired – 711.

Click below to connect to KDOT's Social Networks:

