

South Central District Office
500 N. Hendricks
Hutchinson, KS 67504-0769



phone: 620-663-3361
fax: 620-663-1804
www.ksdot.org

Julie Lorenz, Secretary

Laura Kelly, Governor

IMMEDIATE RELEASE

Oct. 6, 2021

For more information: Tim Potter

620-860-7389; mobile: 620-727-2278; Tim.Potter@ks.gov

Section of 56th St. in Reno County closing during work on new K-14

A section of 56th Street in Reno County will be closing to allow for construction of a bridge on the K-14 realignment project.

Starting around Wednesday, Oct. 13, 56th Street from Yaggy Road west to K-14 will be closed for the work. The closing will last about a year.

The first map below shows the section of 56th Street that is closing.

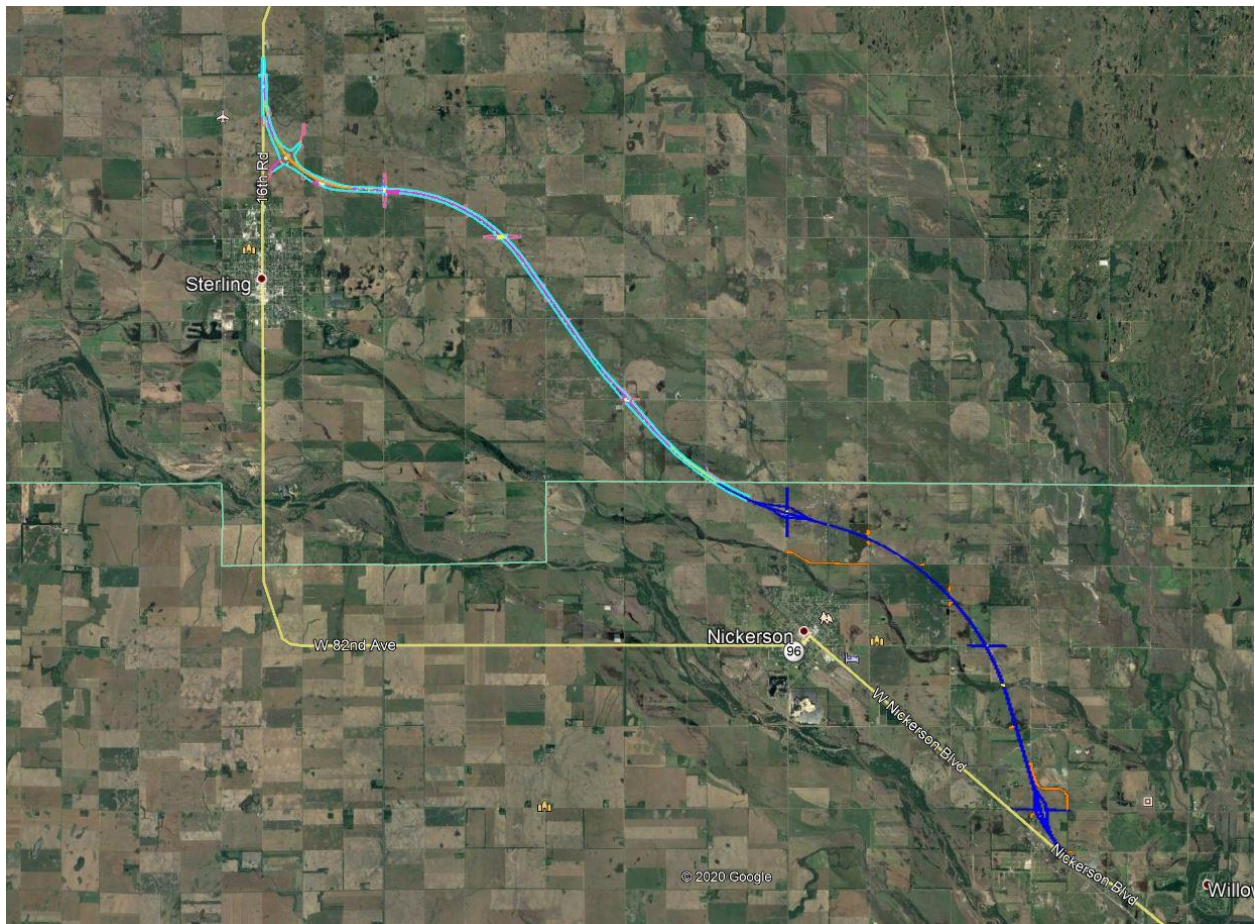
The second map below shows a diagram of the new K-14 alignment in Reno and Rice counties.

Background: The Kansas Department of Transportation realignment project started this spring. This a 15-mile, \$81.7 million realignment of K-14. The work stretches from Hutchinson, to Nickerson, to Sterling. The project is expected to be completed by June 16, 2023. Bob Bergkamp Construction Co. Inc., of Wichita, is the primary contractor.

During the work, traffic will continue to use the existing K-14/96 alignment in Reno and Rice counties.

The Rice County portion of the realignment will be from the Reno/Rice county line to just north of the K-96/Avenue T junction. The length is about 8 miles.

The Reno County portion of the realignment will be from about 4.5 miles southeast of Nickerson northwest to the Reno/Rice county line. The length is a little over 7 miles.



####

This information can be made available in alternative accessible formats upon request.
For information about obtaining an alternative format, contact the KDOT Division of Communications,
700 SW Harrison St., 2nd Fl West, Topeka, KS 66603-3754 or phone 785-296-3585 (Voice)/Hearing Impaired – 711.
Click below to connect to KDOT's Social Networks:

