

South Central District Office  
500 N. Hendricks  
Hutchinson, KS 67504-0769



phone: 620-663-3361  
fax: 620-663-1804  
[www.ksdot.org](http://www.ksdot.org)

Julie Lorenz, Secretary

Laura Kelly, Governor

IMMEDIATE RELEASE

Feb. 17, 2022

For more information: Tim Potter

620-860-7389; mobile: 620-727-2278; [Tim.Potter@ks.gov](mailto:Tim.Potter@ks.gov)

### **Part of 50th Avenue has closed as part of K-14 realignment**

A portion of 50<sup>th</sup> Avenue near northwest Hutchinson has been permanently closed as part of ongoing construction of the K-14 realignment.

The closure, on 50<sup>th</sup> Avenue from K-14 east to Yaggy Road, is part of the new alignment.

**The first map below shows where the 50<sup>th</sup> Avenue closure is located, marked in red.**

**The second map below shows a diagram of the new K-14 alignment in Reno and Rice counties.**

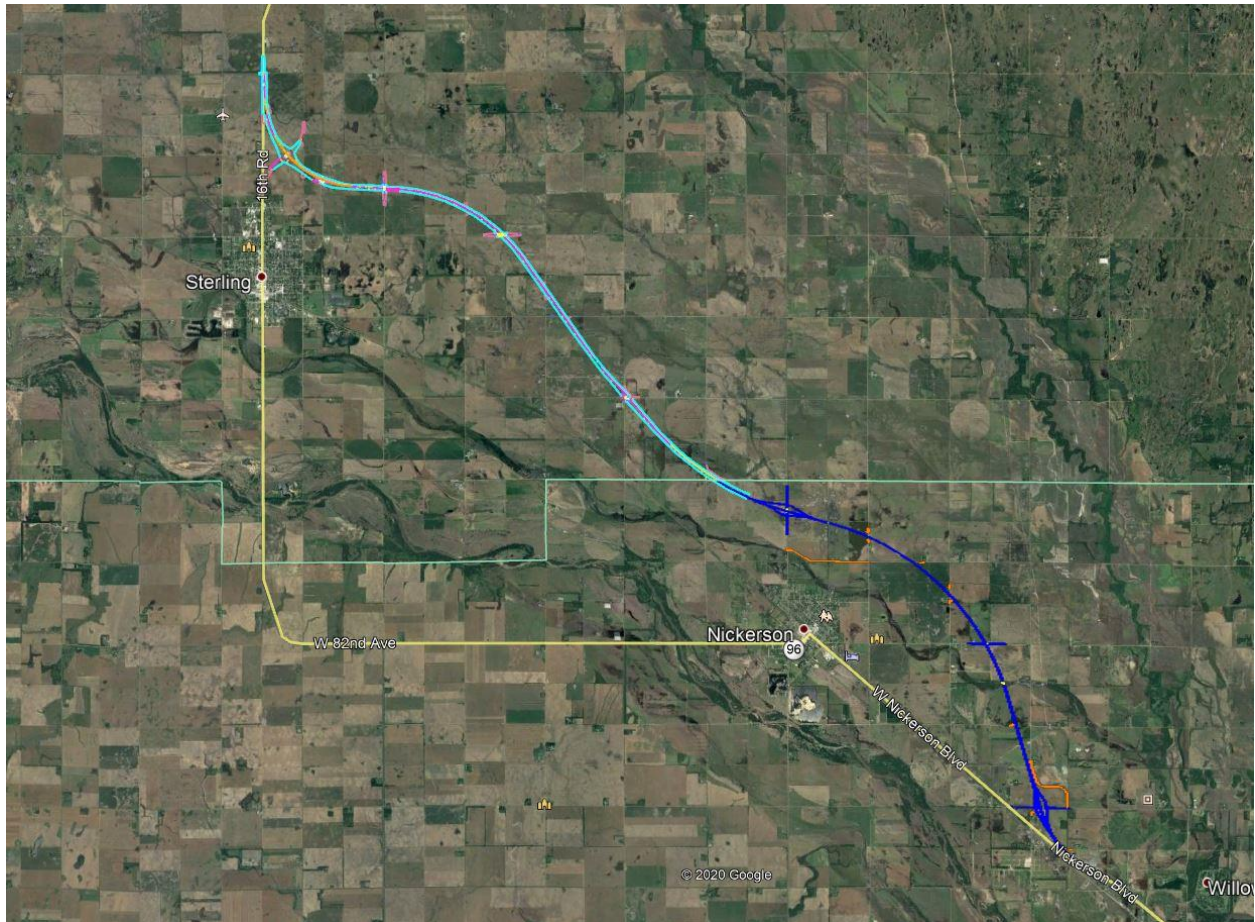
**Background:** This Kansas Department of Transportation realignment project started in the spring of 2021. This a 15-mile, \$81.7 million realignment of K-14. The work stretches from Hutchinson, to Nickerson, to Sterling. The project is expected to be completed by June 16, 2023. Bob Bergkamp Construction Co. Inc., of Wichita, is the primary contractor.

During the work, traffic will continue to use the existing K-14/96 alignment in Reno and Rice counties.

The Reno County portion of the realignment will be from about 4.5 miles southeast of Nickerson northwest to the Reno/Rice county line. The length is a little over 7 miles.

The Rice County portion of the realignment will be from the Reno/Rice county line to just north of the K-96/Avenue T junction. The length is about 8 miles.





###

This information can be made available in alternative accessible formats upon request.  
For information about obtaining an alternative format, contact the KDOT Communications Division,  
700 SW Harrison St., 2<sup>nd</sup> Fl West, Topeka, KS 66603-3754 or phone 785-296-3585 (Voice)/Hearing Impaired – 711.

Click below to connect to KDOT's Social Networks:

