

South Central District Office  
500 N. Hendricks  
Hutchinson, KS 67504-0769



phone: 620-663-3361  
fax: 620-663-1804  
[www.ksdot.org](http://www.ksdot.org)

Julie Lorenz, Secretary

Laura Kelly, Governor

IMMEDIATE RELEASE

March 25, 2022

For more information: Tim Potter

620-860-7389; mobile: 620-727-2278; [Tim.Potter@ks.gov](mailto:Tim.Potter@ks.gov)

### **U.S. 56 to be resurfaced between Great Bend, Ellinwood**

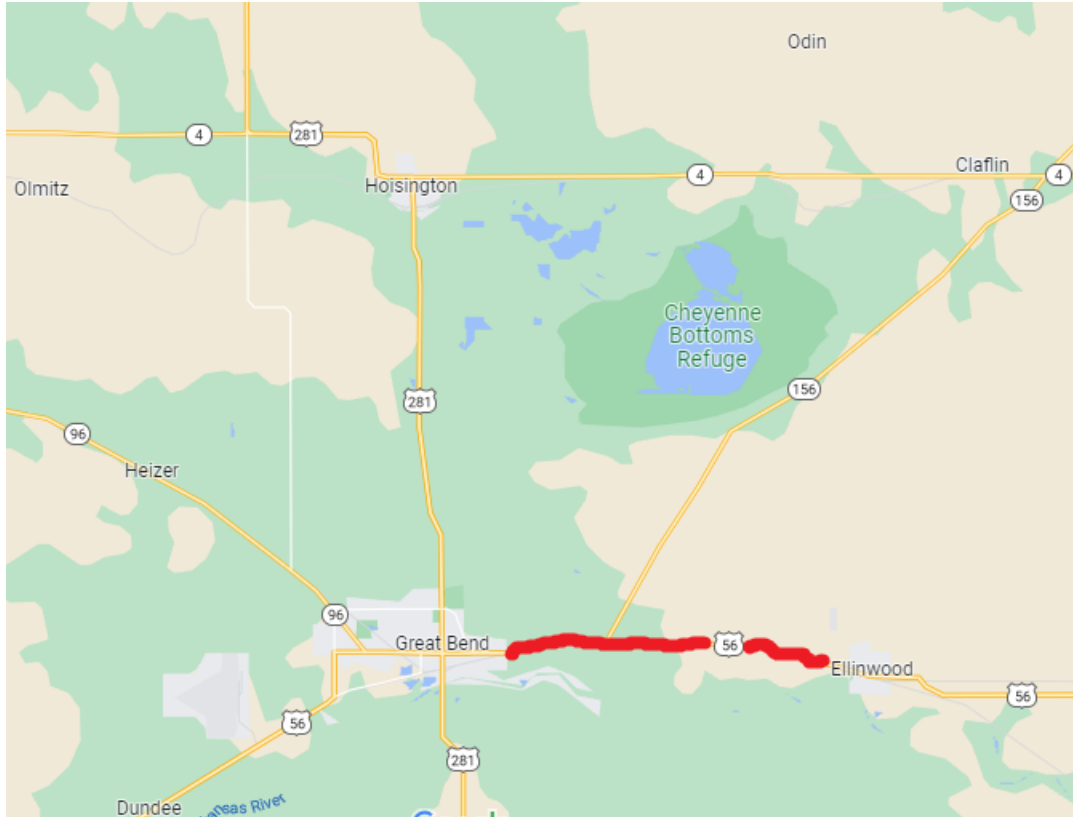
Resurfacing of an 8-mile section of U.S. 56 in Barton County is expected to start around April 8.

The Kansas Department of Transportation project involves a mill and hot-mix-asphalt overlay on U.S. 56 from the east city limits of Great Bend to the west city limits of Ellinwood.

During the work, traffic will be reduced to one lane and controlled by flaggers and a pilot car, so motorists should be prepared to slow down and stop for the work zone. Motorists should expect delays of up to 15 minutes. The project is expected to be completed around April 28.

Venture Corp., of Great Bend, is the primary contractor for the \$1,569,163 project.

**The map below shows the project location, marked in red.**



###

This information can be made available in alternative accessible formats upon request.

For information about obtaining an alternative format, contact the KDOT Communications Division,  
700 SW Harrison St., 2<sup>nd</sup> Fl West, Topeka, KS 66603-3754 or phone 785-296-3585 (Voice)/Hearing Impaired – 711.

Click below to connect to KDOT's Social Networks:

