

An update on KC Metro highway projects

Week of April 26, 2021

Updated April 29

Contact: Kim Stich, Kim.Stich@ks.gov

KDOT: www.ksdot.org

KanDrive: www.KanDrive.org

NE Kansas KDOT: [Kansas City Metro releases](#)

Facebook: @NEKansasKDOT

[Kansas City Metro Projects List](#)

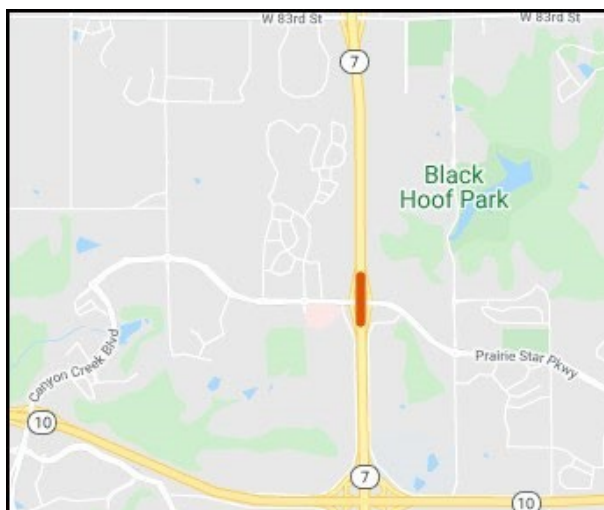
Twitter: @KansasCityKDOT

Nextdoor: Kansas Department of Transportation – District 1

JOHNSON COUNTY

Eastbound K-10, from Lone Elm to Woodland Road, April 30, NEW. This section of K-10 will be reduced to one lane for guardrail repair from 9 a.m. to 3 p.m.

Eastbound and westbound K-10 between Woodland Road and Lackman Road, May 8-9, NEW. This section of K-10 will be reduced to one lane for pavement marking.

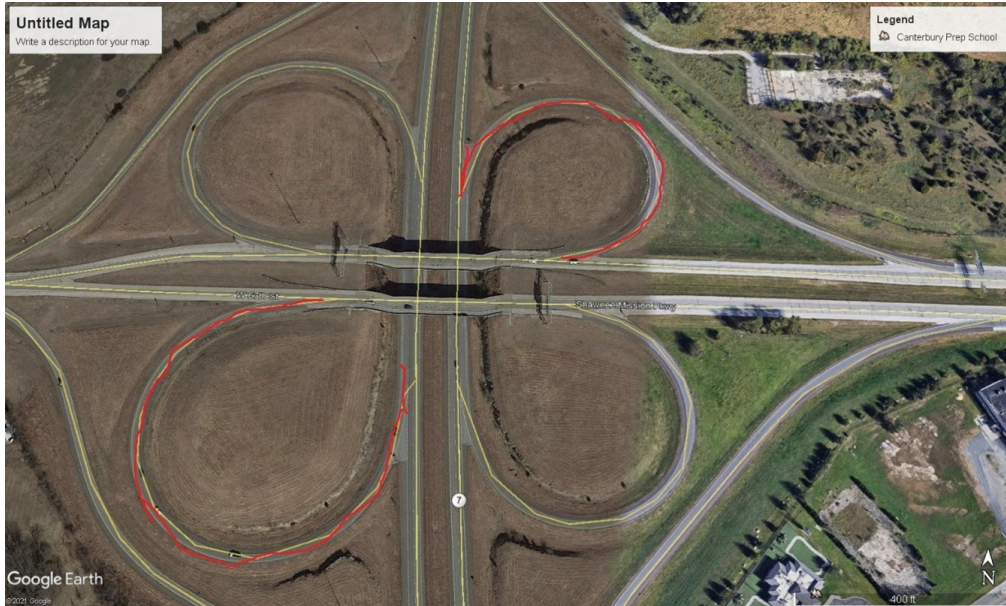


KDOT construction projects affecting traffic:

- 1. K-7, 95th Street/Prairie Star Parkway bridge repair begins April 19.** Lane reductions will be involved. **Projected expected to be completed May 8.** See map at left.
- 2. City of Shawnee project. Northbound and southbound K-7 at 43rd Street, beginning April 29, NEW.** This section of K-7 will be reduced to one lane for reconstruction of the intersection. Work will be completed in mid-August.
- 3. Bridge deck repair at 67th**

Street/Shawnee Mission Parkway over K-7 in Johnson County, (ONGOING)

April 12 to September - The project includes concrete patching, overlay and expansion joints. The expected completion of the project is mid-September. Work will occur 7 a.m. to 5 p.m., Monday to Friday and Saturdays as needed. **Please be aware that the southbound K-7 to eastbound 67th Street ramp and the northbound K-7 to westbound 67th Street ramp will be closed for the duration of the project.** All other ramps will remain open. See below:



7. K-7 at Old US 56, City of Olathe project –reconfiguring the intersection at Lone Elm/Old US 56.

Old US 56 closed, March 1 to June 1.

Old 56 will be closed on both the east and west sides of Lone Elm/Parker. Traffic will still be able to drive north/south through the intersection, but all turning movements and east/west travel will be restricted during the closure. (See detour map. **NEW (ONGOING)**)

8. 199th St and Waverly Road - (ONGOING)

The 199th Street overpass over I-35 between Homestead Lane and Gardner Road is closed for the replacement of the overpass bridge. Waverly Road access to 199th Street from 207th Street is also closed. This project is expected to be completed by October 2021.

WYANDOTTE COUNTY

KDOT maintenance:

- **Eastbound I-70, from James Street to the Missouri state line, April 30, NEW.**
From 9 a.m. to 3 p.m., this section of I-70 will have alternating lane reductions to allow for bridge inspection work.

KDOT construction projects affecting traffic:

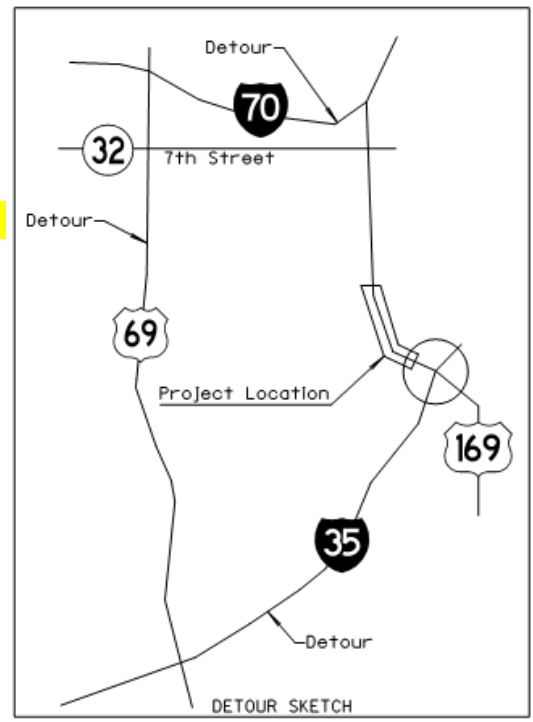
- Structural steel painting and concrete barrier wall staining to finish work on the Lewis & Clark Viaduct, lane closure, westbound I-70 over the Kansas River, April 12 to early June.**

- Westbound I-70 reduced to 2 lanes over the Kansas River. Expected completion of the project is early June.

- U.S. 169/7th St./Herman Dillon bridge replacement project. Northbound U.S. 169/7th St. is closed, southbound over the Kansas River began April 12.**

(ONGOING)

- Work will include truss and expansion joint repair on the Kansas River bridge, primarily on the northbound side.
- Work will occur during daytime hours, Monday to Friday, and completion is expected in mid-June 2021. Weekend and night work may take place to close the bridge and for placement of traffic control equipment and detour signs.



- Unified Government project – for roadway improvements, includes grading, surfacing and storm sewer work. Two lanes of traffic will be reduced to one 11 ft. wide lane of thru traffic using a flagging operation, Leavenworth Road/K-5 from 78th St. to 63rd St. Work will occur during daylight hours, Feb. 15 to Dec. 10.**

(ONGOING)

- Bike/pedestrian path project in Kansas City –(ONGOING)**

Strong Avenue from 42nd Street to 24th Street, along 24th from Strong Avenue to Metropolitan Avenue and along Metropolitan Avenue from 24th to 12th Street. Work will occur 7 a.m. to 6 p.m., Monday to Friday and Saturdays as necessary, **project completion expected end of May.** Curb and sidewalk construction will begin on the south side of Strong Avenue between 36th Street and 25th Street, where

on-street parking will not be allowed, sidewalk closed and pedestrians detoured to the north side of the road. Once the south side is complete, construction will begin on the north side of Strong Avenue. Parking will not be allowed in the areas designated as no parking.

JEFFERSON COUNTY

KDOT maintenance:

KDOT construction project affecting traffic:

LEAVENWORTH COUNTY

KDOT maintenance:

KDOT construction project affecting traffic:

- **Intersection improvements at K-32 and 222nd Street, west of Linwood. NEW (ONGOING) From April 5 to end of June**, improvements will include grading and asphalt surfacing for new lanes. Work will occur 7 a.m. to 5 p.m., Monday to Friday and Saturdays, as needed. The project is expected to be completed by the end of June.

Traffic will be carried through the existing lanes for the duration of the project, using a flagging and pilot car operation. Signage and traffic cones will also be used. Drivers should expect delays of up to 15 minutes and may want to find an alternative route.

For additional road condition details, check KDOT's updated traveler information website, www.Kandrive.org. KDOT urges all motorists to be alert and obey the warning signs when approaching and driving through a work zone. Drive safely and always wear your seat belt.

Unsubscribe from this email list by emailing kelly.kultala@ks.gov (put Unsubscribe in the Subject line).

###

This information can be made available in alternative accessible formats upon request.

For information about obtaining an alternative format, contact the KDOT Office of Public Affairs, 700 SW Harrison St., 2nd Fl West, Topeka, KS 66603-3754 or phone 785-296-3585 (Voice)/Hearing Impaired – 711.

Click below to connect to KDOT's Social Networks:

