

An update on KC Metro highway projects

Week of July 19, 2021

Updated July 20

Contact: Delaney Tholen, Delaney.Tholen@ks.gov

NE Kansas KDOT: [Kansas City Metro releases](#) [Kansas City Metro Projects List](#)

Facebook: [@NEKansasKDOT](#) Twitter: [@KansasCityKDOT](#)

Nextdoor: [Kansas Department of Transportation – District 1](#) KDOT: www.ksdot.org

For additional road condition details, check KDOT's updated traveler information website, www.KanDrive.org.

JOHNSON COUNTY

KDOT short-term closures:

NB and SB I-35 at 119th St., July 19-20, NEW. Traffic will be reduced to two lanes at 8 p.m. and then to 1 lane at 9:30 p.m. for bridge deck demolition. All lanes will reopen by 5 a.m.

NB and SB I-35, 95th St. to Missouri state line, July 19-23, NEW. Alternating lane closures for ongoing pavement marking project from 7 p.m. to 6 a.m.

NB and SB U.S. 169, from 151st St. to 175th St., July 20, NEW. Short-term intersection closures as work progresses; traffic will be reduced to one lane for asphalt overlay from 7 p.m. to 6 a.m.

Gardner Rd. to I-35, NB entrance ramp, July 20, NEW. Ramp closed. Closed for pavement widening from 8 p.m. to 8 a.m.

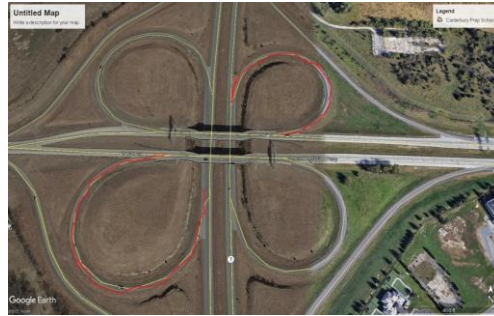
SB I-35, entrance and exit ramps at Cambridge Dr. and Mission Rd., July 21, NEW. Ramps closed. (7th St. ramp will remain open.) Closed for ongoing pavement marking project from 7 p.m. to 6 a.m.

KDOT construction projects affecting traffic:

- 1. NB and SB I-35, 95th St. to State Line Rd., start date July 19. (NEW-ONGOING).** Pavement marking repair project; lane and ramp closures in areas where work is taking place. **Please see “Short-Term Closures” for applicable nightly closure info.** Work will occur Sunday through Friday, from 7 p.m. to 6 a.m. Project completion expected by late August.
- 2. Gardner Rd. bridge at I-35, start date July 14, (NEW - ONGOING).** Bridge is closed to northbound traffic for pavement widening and bridge pavement patching. **Please see “Short-Term Closures” for applicable nightly closure info.** Alternate route will be marked with detoursign. Project completion expected by mid-August.

3. **U.S. 169/151st St. to 175th St.**, start date **June 28, (ONGOING)**. Pavement improvements will include intersections, side roads, turn lanes, widenings and shoulders. Work will occur 7 p.m. to 6 a.m., Tuesday to Saturday, with nightly lane closures. **Please see “Short-Term Closures” for applicable daily closure info.** Project completion expected by mid-September.
4. **NB U.S. 69/179th St. to 191st St.**, start date **June 14, (ONGOING – UPDATED)**. NB U.S. 69 will be reduced to one lane for bridge maintenance (short-term intersections closures at 162nd St. and 175th St.). Work will occur 7 a.m. to 5:30 p.m., Monday through Friday, with work on Saturday as needed. Project completion expected by mid-November.
5. **City of Olathe project. I-35/119th St. bridge**, start date **June 1, (ONGOING – UPDATED)**. **119th St. bridge will be closed beginning June 1. I-35 will have daily lane closures.** Right turns onto 119th St. from I-35 and right turns onto I-35 from 119th St. will be allowed. **Please see “Short-Term Closures” for applicable daily I-35 closure info.** Project completion expected by September.
6. **City of Gardner project. 191st to Gardner Rd.**, **(ONGOING - UPDATED)**. Project is addressing potholes on bridge and concrete surface work in preparation for Locust St. project. Bridge over I-35 will be reduced to a single lane that will only permit SB traffic. **Please see “Short-Term Closures” for applicable daily closure info.** When complete, existing intersection at Gardner Rd. and 191st St. will be closed. With addition of Locust St., a north/south street parallel to Gardner Rd., and access to Gardner Rd. will be established at 188th St. Work will occur Monday through Friday during daylight hours, with work on Saturday as needed. Project phase completion expected by mid-July.
7. **K-10 at Lexington Ave. bridge reconstruction**, start date **May 24 (ONGOING- UPDATED)**. A crossover, or temporary asphalt road, will be constructed in the median to redirect traffic onto WB K-10. Once traffic is redirected, the EB K-10 bridge deck installation will begin. **EB and WB K-10, near Lexington Ave., will be reduced to one lane of traffic in each direction, and EB K-10 on-ramp from Lexington Ave. will be closed.** Work will occur Monday through Friday during daylight hours, with work on Saturday as needed. Project completion expected by late November.
8. **U.S. 56 pavement maintenance project, Moonlight Rd. to I-35**, start date **May 8, (revised work times and closures) (ONGOING)**. Work will include concrete pavement patching and asphalt overlay. EB and WB traffic will be reduced to one lane during hours of work. All lanes of traffic will be open when work is not being performed. Work will occur 7 p.m. to 6 a.m., Wednesday to Friday, and 7 p.m. Saturday to 6 a.m. Monday. **The off-ramp from SB New Century Pkwy. to WB U.S. 56 will also be closed: traffic will be able to access U.S. 56 using Industrial Bypass.** Off-ramp will be closed from 7 p.m. Wednesday to 6 a.m. Thursday. Project completion expected by mid-July.
9. **City of Shawnee project. NB and SB K-7 at 43rd St.**, start date **April 29 (ONGOING)**. This section of K-7 will be reduced to one lane for intersection reconstruction. Project completion expected by mid-August.
10. **Bridge deck maintenance at 67th St./Shawnee Mission Pkwy. over K-7**, start date **April 12 (ONGOING - UPDATED)**. Project includes concrete patching, overlay and expansion joints. **Please be aware that SB K-7 to EB 67th St. ramp and NB K-7 to WB 67th St. ramp will be closed for duration of project.** All other ramps will remain open. EB and WB U.S. 56 will be reduced to

one lane during hours of work. Work will occur 7 a.m. to 5 p.m., Monday to Friday and Saturdays as needed. Project completion expected by mid-September. See map below:



- 11. 199th St. overpass and Waverly Rd., NB and SB I-35 (ONGOING - UPDATED).** 199th St. over I-35 closed between Homestead Ln. and Gardner Rd. for replacement of overpass bridge. Waverly Rd. access to 199th St. from 207th St. also closed. **I-35 will have intermittent daily lane closures.** Project completion expected by October.
-

WYANDOTTE COUNTY

KDOT short-term closures:

K-5 project: K-5 (Leavenworth Rd.), from N. 69th St. to N. 70th St., July 9-23, NEW. Road closed. Alternate routes can be accessed using N. 67th St. and N. 72nd St. and will be marked with detour signs.

K-7 project: daily closures for pavement work.

NB and SB K-7 at Kansas Ave., July 18-22, NEW. Alternating lane closures and moving lane drop for replacement of traffic detection from 7 p.m. to 6 a.m.

NB and SB K-7, I-70 to Elizabeth Ave., July 20, NEW. Right lanes closed and moving lane drops for replacement of traffic detection from 7 p.m. to 6 a.m.

SB K-7, exit and entrance ramps at Nettleton Ave. at Kansas Ave., July 20, NEW. Ramps closed and moving lane drop ramp for shoulder work from 7 p.m. to 6 a.m.

KDOT construction projects affecting traffic:

- 1. K-32, 142nd St. to K-32/U.S. 24 junction, start date July 15. (ONGOING - UPDATED).** Traffic will be reduced to single lane and guided through work area by pilot car operation. **Lane width restriction of 12 ft. in work area.** Pavement improvements include resurfacing using hot in-place recycled asphalt. Work will occur Monday to Friday, with Saturdays as needed, from 6 a.m. to 6 p.m. Project completion expected by mid- September.
- 2. U.S. 24, Leavenworth/Wyandotte Co. line to K-16 in Tonganoxie, start date July 9. (ONGOING).** EB and WB traffic will be reduced to single lane within active paving area. Pavement improvements will include intersections, side roads, turn lanes, widenings and shoulders. Work will occur during daylight hours, Monday to Friday; project completion expected by early September.
- 3. U.S. 169 (7th St.)/I-70, start date June 16, (ONGOING - UPDATED).** WB I-70 to SB U.S. 169 (7th St.) exit ramp will be closed; U.S. 169 (7th St.) traffic will be reduced from two lanes to one lane in each direction for bridge maintenance. Ramp closure and lane reduction will remain for

duration of project. **Traffic wanting to utilize WB I-70 to SB U.S. 169 (7th St.) exit ramp will be detoured to 18th St. exit and directed back to SB U.S. 169 (7th St.) on EB I-70.** Detour will be signed. Work will occur 7 a.m. to 3:30 p.m., Monday to Friday, and Saturdays as needed. Project completion expected by mid-October.

- 4. K-7 from Kansas River to Elizabeth Ave., start date June 11, (ONGOING - UPDATED).** Single lane closures will occur on K-7, and ramps will be closed as necessary to allow for paving operations, including asphalt pavement patching, placing treatment on shoulders, and pavement markings. **Work will occur Sunday to Friday, 7 p.m. to 6 a.m., with Friday nights as needed, beginning June 19 (change in work hours).** Project will continue through mid-August.

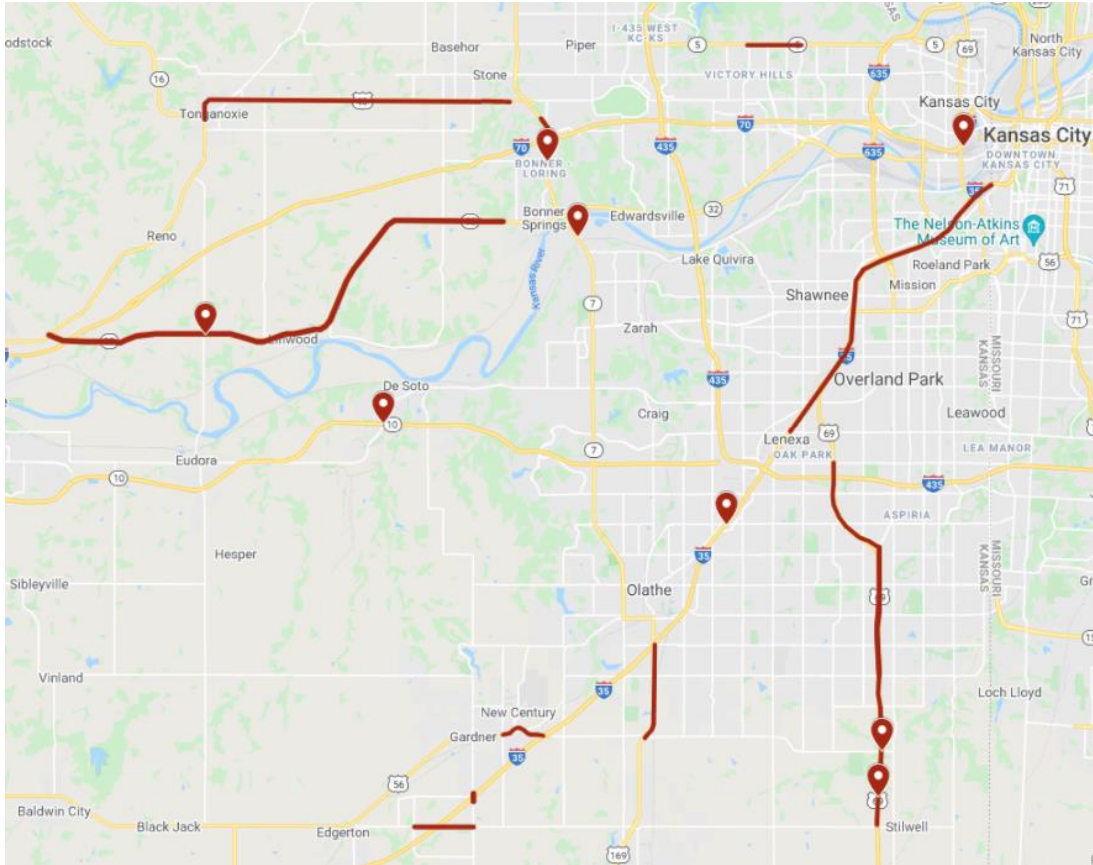
TRAFFIC ADVISORY: This mill and overlay project is adjacent to a City of Shawnee ongoing intersection reconstruction project at K-7 and 43rd Street. Traffic delays are expected and drivers are encouraged to find alternate routes.

- 5. Unified Government project. Leavenworth Rd./K-5 from 78th St. to 63rd St., start date February 15 (ONGOING).** Two lanes of traffic reduced to one 11 ft. wide lane of thru traffic using flagging operation. Roadway improvements include grading, surfacing and storm sewer work. Work will occur during daylight hours; project completion expected by December 10.

- 6. Intersection improvements at K-32 and 222nd St., west of Linwood, start date April 5 (ONGOING).** Improvements include grading and asphalt surfacing for new lanes. **Traffic will be carried through existing lanes for duration of project, using flagging and pilot car operation.** Signage and traffic cones will also be used. Drivers should expect delays of up to 15 minutes and may want to find an alternative route. Work will occur 7 a.m. to 5 p.m., Monday to Friday and Saturdays, as needed. Project completion expected by mid-August.

KDOT urges all motorists to be alert and obey the warning signs when approaching and driving through a work zone. Drive safely and always wear your seat belt. Unsubscribe from this email list by emailing delaney.tholen@ks.gov (please include Unsubscribe in the Subject line).

CURRENT KC METRO HIGHWAY KDOT PROJECT MAP



###

This information can be made available in alternative accessible formats upon request. For information about obtaining an alternative format, contact the KDOT Office of Public Affairs, 700 SW Harrison St., 2nd Fl. West, Topeka, KS 66603-3754 or phone 785-296-3585 (Voice) / 7-1-1 (Hearing Impaired).

Click below to connect to KDOT's Social Networks:

