

IMMEDIATE RELEASE

April 9, 2024

For more information:

Delaney Tholen

785-817-9365

delaney.tholen@ks.gov

Lane closure tomorrow and Thursday for K-92 Centennial Bridge inspections in Kansas and Missouri

Kansas Department of Transportation regular bridge inspections are scheduled for the K-92 Centennial Bridge tomorrow, Wednesday, April 10, and Thursday, April 11, from 9 a.m. to 3 p.m., weather permitting.

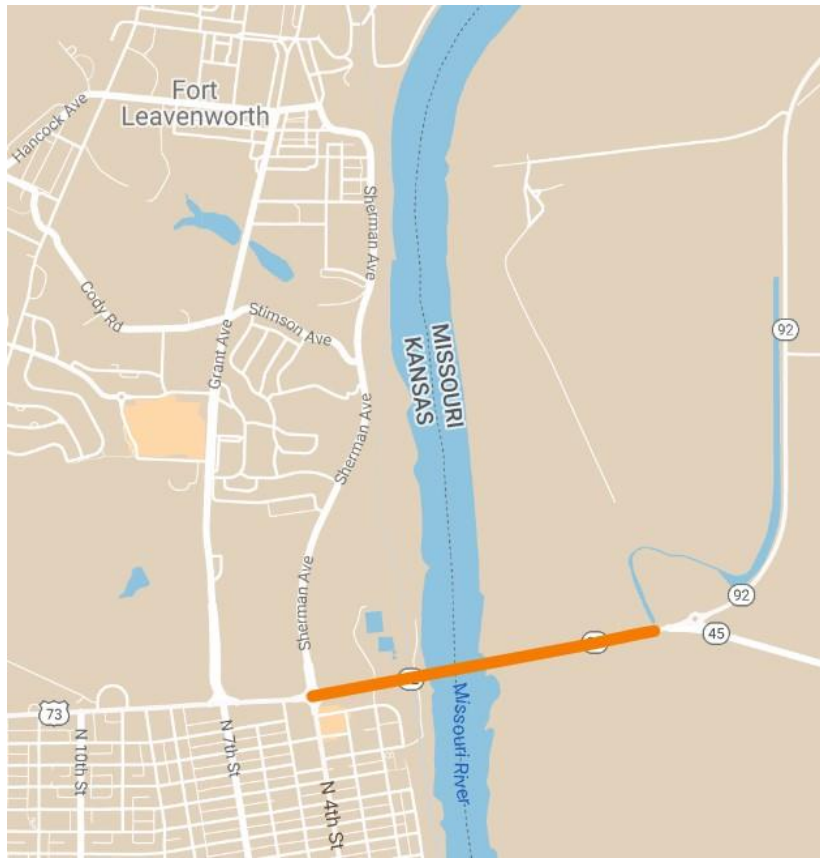
Bridge inspections require a single lane closure for the following highway segment:

- **Eastbound and westbound K-92, from U.S. 73 (K-7/4th Street) in Leavenworth to 500 feet west of the Missouri Route 45 Spur in Platte County, Mo.**

Minor delays are expected and motorists are asked to allow for extra travel time.

KDOT urges all motorists to be alert and obey the warning signs when approaching and driving through a highway work zone. To stay aware of all road construction projects across Kansas go to www.kandrive.gov or call 5-1-1. Drive safely and always wear your seat belt.

Map below shows lane closure location marked in orange.



###

This information can be made available in alternative accessible formats upon request. For information about obtaining an alternative format, contact the KDOT Division of Communications, 700 SW Harrison St., 2nd Fl. West, Topeka, KS 66603-3745 or phone 785-296-3585 (Voice) / 7-1-1 (Hearing Impaired).

Click below to connect to KDOT's Social Networks:

