

KDOT Quick Facts

January 2012

* **Kansas Stats/
Rankings**

* **CTP**
* **Personnel**

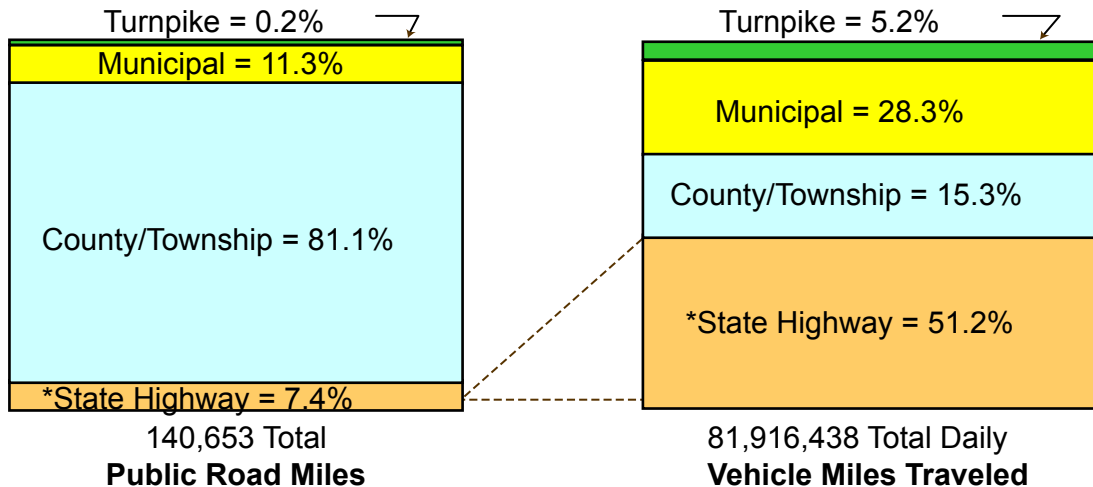
* **Revenue**
* **Taxes**

* **Accident
Stats**

Table of Contents

Kansas Public Road Miles and Vehicle Miles of Travel - Percent by Jurisdiction	2
Travel in Calendar Year 2010	3
Kansas Transportation at a Glance - 2010.....	4
Comparison of Public Road Miles and Population.....	6
Program Structure.....	7
T-WORKS	8
T-WORKS FY 2011 - 2020	9
T-WORKS Focuses on Jobs, Modes.....	10
T-WORKS Sources of Revenue	11
CTP Overview as of December 1, 2009.....	12
KDOT - FTE Positions.....	13
Kansas Department of Transportation Fund Sources FY 2012.....	14
Kansas Department of Transportation Selected Information	15
Comparison of Sales and Tax use	16
Federal/State Gas Tax Comparisons	17
Gasoline Tax Rate Comparison	18
Diesel Tax Rate Comparison	19
Kansas Motor Fuel Tax Receipts and Distributions	20
Kansas Special City and County Highway Fund	21
2010 Accident Stats	22
Helpful Numbers	23

Kansas Public Road Miles and Vehicle Miles of Travel - Percent by Jurisdiction



2010 * Includes City Connecting Links

Travel in Calendar Year 2010

System	Center Line Miles	Percent Of Total Miles	Daily Vehicle Miles Traveled	Percent Of Total Travel
State Highway System	9,503	6.8	26,747,853	32.6
City Connecting Links	837	0.6	15,210,523	18.6
County/Township	114,120	81.1	12,510,398	15.3
Municipal	15,955	11.3	23,155,176	28.3
Turnpike	238	0.2	4,292,488	5.2
TOTAL	140,653	100.0%	81,916,438	100.0%

Source: Kansas Department of Transportation, "Mileage and Travel Tables," published September 2011, page1.

Kansas Transportation at a Glance - 2010

Background of Kansas

105 counties, 627 cities, 4 MPOs

140,653 miles of public roads

Land Area (sq. Miles) 81,823

Population (2009 Est.) 2,853,118

State Tax Rates (cents/gal.)

Effective July 1, 2002

Gasoline 24

Diesel 26

Gasohol 24

Registered Vehicles

Autos 1,449,484

Pickups & Trucks 700,374

Trailers 149,488

Motorcycles 79,667

Motorized Bikes 7,748

Special Registrations 200,958

RV 11,849

Total 2,599,568

Licensed Drivers 2,024,445

Annual Vehicle Miles 29,899,500

of Travel (in 1,000s)

Kansas Transportation at a Glance - 2010

Public Road Miles

Rural	127,675
Urban	12,978
Total	140,653

Accidents and Fatalities

Total Accidents	60,029
Fatal Accidents	376
Fatalities	431

Airports

Public Use	138
Commercial Service	8

Bridges

Structurally Deficient	2,729
Functionally Obsolete	1,846
Non-deficient	20,550
Not Rated	154
Total	25,279

Rail

Total Miles Operated	4,721
Shortline Miles Operated	1,931
Class I Miles Operated	2,790

Comparison of Public Road Miles and Population

Public Road Miles

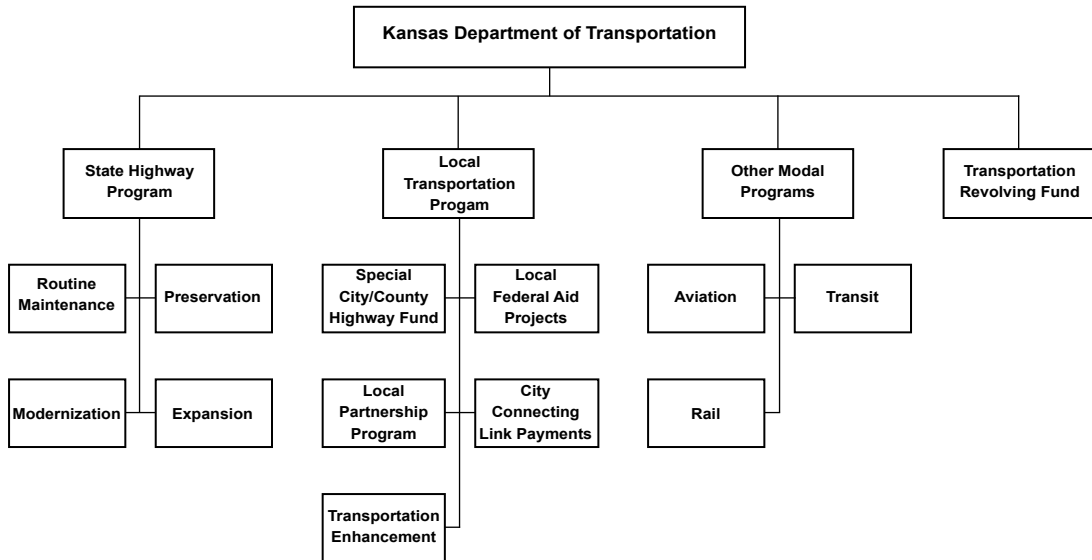
State	Ranking	Miles	Land Area	Population	People Per Mile
Texas	1	310,850	261,226	25,145,561	81
California	2	171,874	155,766	37,253,956	216
Kansas	3	*140,753	**81,823	2,853,118	20
Illinois	4	139,577	55,518	12,830,632	92

(Source - 2009 Highway Statistics, 2010 Census Estimates)

* This includes roads under the jurisdiction of KDOT, KTA and Kansas cities and counties. About 100,000 miles of Kansas roads are non-paved.

** Kansas ranks #15 in land area.

Program Structure





FY 2011 through FY 2020 - Total Spending

State Highways - \$6 Billion* – Spending on the state highway system
(Interstate, U.S., and K routes)

Local Roads - \$1.6 Billion* – Spending on city streets and county roads

Modes - \$174 Million* – Spending on public transit, aviation, and railroads

*Estimates do not include federal funds



Estimated State Highway Spending

Preservation - \$ 4.2 Billion

- Repair and reconstruction of roads and bridges

Modernization and Expansion - \$1.8 Billion

- Modernization work includes improvements to the existing roadway, such as the addition of shoulders
- Expansion work is new construction, such as additional lanes or interchanges

T-WORKS Program Focuses on Jobs, All Modes of Transportation

T-WORKS will preserve and improve the state's transportation system and will create tens of thousands of jobs. The program includes \$2.7 billion in new revenues during the 10-year plan. The new revenues will come from increased registration fees for heavy trucks and a sales tax deposit that takes effect in FY 2014. It also provides additional bonding authority for KDOT.

It is estimated that T-WORKS will create or sustain 175,000 jobs over the next 10 years. The program passed by the Legislature provides 100 percent, or \$4.2 billion, of the highway preservation funding recommended, ensuring that every mile of Kansas highway will see some preservation work. It also sets aside \$1.8 billion in new construction funds.

T-WORKS provides \$6 million a year for public transit services, which increases to \$11 million a year in FY 2014, and \$3 million a year in aviation funding, which increases to \$5 million in FY 2014, and \$5 million a year in rail funding starting in FY 2014. KDOT will spend a minimum of \$8 million in each county in Kansas during the program.



New Sources of Revenue (in millions)

\$100 increase in Heavy Truck Registration*	\$211
0.4% increase in State Sales Tax Deposit**	\$1,532
\$1.6 billion in Bonds Issued	\$900
Total New Revenue	\$2,643

* The registration fee increase begins in 2013 and includes heavy duty trucks. It does not include cars and light-duty pickup trucks, antique cars or motorcycles.

** The increase in the State Sales Tax Deposit begins in FY 2014

CTP Overview as of December 1, 2009

\$5.7 billion - CTP State Highway Program construction cost

\$6.6 billion - CTP State Highway Program total cost
(const+CE+Util+RW+PE)

\$13.3 billion - Total CTP cost (\$6.6 billion, plus \$6.7 billion for other expenditures, including \$2.7 billion for Local Transportation Programs, \$1.2 billion for Routine Maintenance and \$1.2 billion for Debt Service)

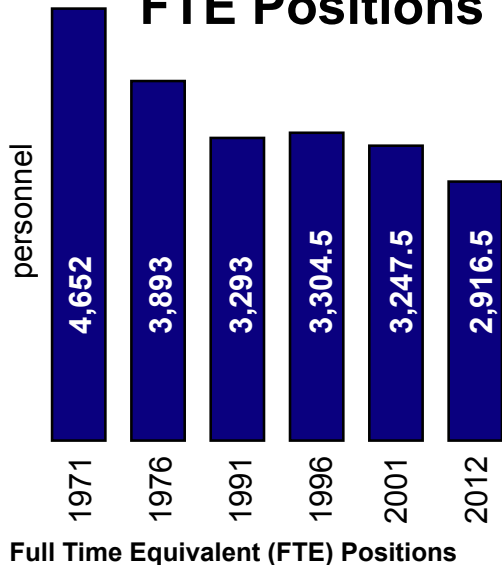
Estimated CTP construction dollars for each District are below:

District One - \$1.7 billion
District Two - \$700 million
District Three - \$500 million
District Four - \$1.0 billion
District Five - \$1.0 billion
District Six - \$500 million
Statewide - \$300 million

*Comprehensive
Transportation
Program (1999-2009)*

Kansas Department of Transportation

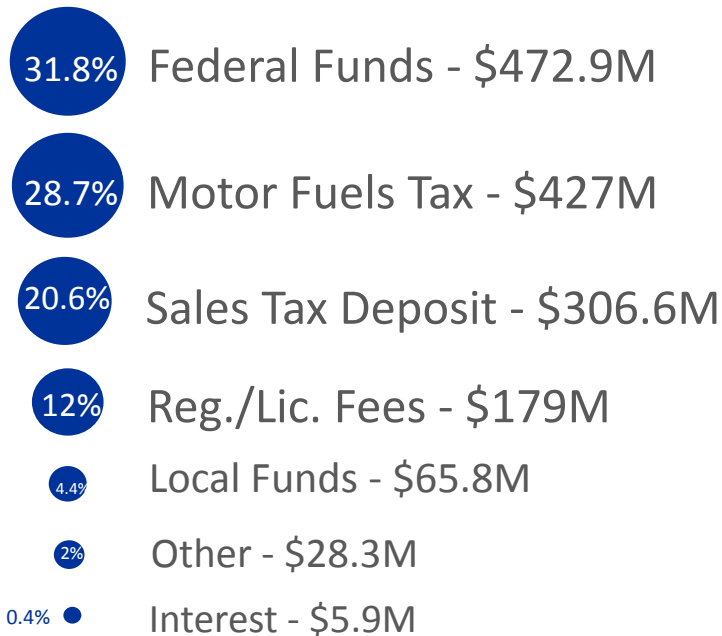
FTE Positions



KDOT has a history of aggressively managing Full Time Equivalent (FTE) positions. KDOT's FTE positions declined by 1,735.5 between FY 1971 and mid-FY 2012. The majority of this reduction (1,281.5) was the result of KDOT's net organizational changes; the other 454 FTE reduction was the result of transfers to other agencies.

KDOT has 2,916.5 FTE, approximately 37 percent fewer than in 1971.

**KDOT
All Funds
Revenue
Sources
FY 2012**
\$1,485.4 M



Kansas Department of Transportation

Selected Information

Budget*

	FY 2012	FY 2013
Operating Budget	287,632,588	290,243,123
Non-Operating Budget	1,330,259,668	1,106,705,590
Total KDOT Budgeted Expenditures	1,617,892.256	1,396,948,713

* As submitted to the Division of the Budget in September 2011
(excluding supplemental and enhancement requests)

Positions:

FTE	2,916.50	2,916.50
Non-FTE	51.00	51.00

Comparison of Sales and Use Tax

2011 Information

	Sales	Use
Kansas	6.300%	6.300%
Nebraska	5.500%	5.500%
Oklahoma	4.500%	4.500%
Missouri	4.225%	4.225%
Colorado	2.900%	2.900%

The use tax is applied when goods and services are purchased from outside the state and imported into the state for use or consumption.

The sales tax is imposed on the purchase price goods and services sold at retail.

Comparison of Fuel Taxes and Revenues

	Gasoline	Diesel
Kansas	24.0 ¢/gal.	26.0 ¢/gal.
National Avg.	26.4 ¢/gal.	26.9 ¢/gal.
Regional Avg.	27.5 ¢/gal.	29.3 ¢/gal.
Border States' Avg.	20.3 ¢/gal.	19.2 ¢/gal.
Annual Yield	1 cent = \$13 M	1 cent = \$5 M

2011 Information

Gasoline Tax Rate Comparison

Excludes Environmental and Inspection Fees

Ranked

Rank	State	Tax	Rank	State	Tax	Rank	State	Tax	Rank	State	Tax
1	Connecticut	50.30 **	14	Pennsylvania	31.20	27	Kansas	24.00	40	Mississippi	18.40
2	New York	49.00 **	15	Maine	31.05 *	28	Dist. of Columbia	23.50	41	Alabama	18.00
3	Hawaii	48.10 **	16	Oregon	31.00	29	Maryland	23.50	42	Arizona	18.00
4	California	47.30 **	17	Wisconsin	30.90	30	Delaware	23.00 *	43	New Hampshire	18.00
5	Illinois	39.60 **	18	Georgia	29.40 **	31	North Dakota	23.00	44	New Mexico	17.90
6	Michigan	38.13	19	Ohio	28.00	32	Colorado	22.00	45	Virginia	17.50
7	Washington	37.50	20	Minnesota	27.00	33	South Dakota	22.00	46	Missouri	17.00
8	North Carolina	35.00 *	21	Montana	27.00	34	Arkansas	21.50	47	Oklahoma	16.00
9	Indiana	33.00 **	22	Nebraska	26.30 *	35	Iowa	21.00	48	South Carolina	16.00
10	Florida	32.50 *	23	Vermont	25.60	36	Massachusetts	21.00 **	49	New Jersey	14.50
11	Nevada	32.30	24	Idaho	25.00	37	Tennessee	21.00	50	Wyoming	13.00
12	West Virginia	32.20 *	25	Kentucky	25.00 *	38	Louisiana	20.00	51	Alaska	<u>8.00</u>
13	Rhode Island	32.00 *	26	Utah	24.50	39	Texas	20.00	Average		26.41

* Variable Tax included

Source: American Petroleum Institute, 10/1/11

** Sales Tax included

Midwest Region per BLS: Illinois, Indiana, Iowa, Kansas, Michigan, Minnesota, Missouri, Nebraska, North Dakota, Ohio, South Dakota and Wisconsin.

Diesel Tax Rate Comparison

Excludes Environmental and Inspection Fees

Ranked

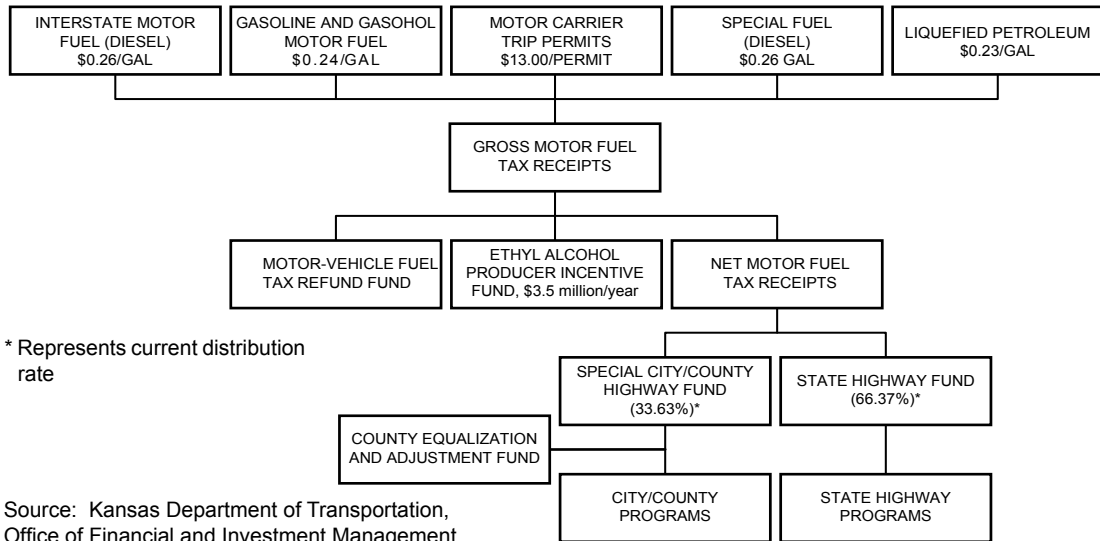
Rank	State	Tax	Rank	State	Tax	Rank	State	Tax	Rank	State	Tax
1	California	50.00 **	14	Maine	31.20 *	27	Maryland	24.30	40	Virginia	19.50
2	Hawaii	49.70 **	15	Wisconsin	30.90	28	Dist. of Columbia	23.50	41	Mississippi	18.40
3	Indiana	48.50 **	16	Oregon	30.00	29	North Dakota	23.00	42	Kentucky	18.10
4	New York	48.10 **	17	Florida	29.80 *	30	Iowa	22.50	43	Tennessee	18.00
5	Connecticut	46.20	18	Vermont	28.00	31	Arkansas	22.50	44	New Hampshire	18.00
6	Illinois	43.30 **	19	Ohio	28.00 *	32	South Dakota	22.00	45	Arizona	18.00
7	Pennsylvania	38.10	20	Montana	27.85	33	Delaware	22.00 *	46	New Jersey	17.50
8	Washington	37.50	21	Nevada	27.80	34	New Mexico	21.80	47	Missouri	17.00
9	Michigan	37.13 **	22	Minnesota	27.50	35	Massachusetts	21.00 *	48	South Carolina	16.00
10	North Carolina	35.05 *	23	Nebraska	26.30 *	36	Alabama	20.90	49	Wyoming	13.00
11	West Virginia	32.10 *	24	Kansas	26.00	37	Colorado	20.50	50	Oklahoma	13.00
12	Rhode Island	32.00 *	25	Idaho	25.00	38	Texas	20.00	51	Alaska	<u>8.00</u>
13	Georgia	31.90 **	26	Utah	24.50	39	Louisiana	20.00		Average	26.88

* Variable Tax included

** Sales Tax included

Source: American Petroleum Institute, 10/1/11

Kansas Motor Fuel Tax Receipts and Distributions

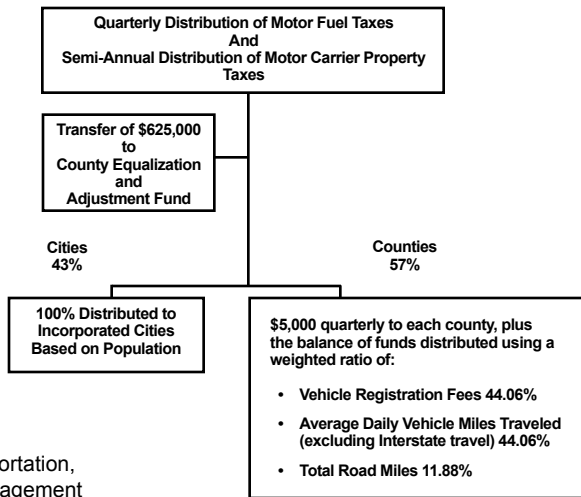


* Represents current distribution rate

Source: Kansas Department of Transportation, Office of Financial and Investment Management

Kansas Special City and County Highway Fund

(Effective July 1, 2000)



Source: Kansas Department of Transportation,
Office of Financial and Investment Management

2010 Accident Stats

Traffic Accidents

376 – Fatal
13,356 – Injury
46,297 – Property Damage Only
60,029

All Persons Involved in Traffic Accidents

431 – Fatally Injured
18,850 – Non-Fatally Injured
117,593 – Unharmed or Unknown
136,874 – All Occupants and Pedestrians

Persons Fatally Injured in Traffic Accidents

177 – Automobile
99 – Pickup Truck
55 – SUV
41 – Motorcycles, Motor Scooters, and Mopeds
17 – Pedestrians
19 – Vans
22 – Other Occupants and Pedestrians
1 – Pedal Cycle
431 – All Occupants and Pedestrians

Most Accidents Occur:

During daylight hours	60.6%
In good weather conditions	82.6%
With dry road surface conditions	77.8%
Not in work zones	97.4%
Inside city limits	69.8%
Where the road is straight and level	77.8%

Top 5 Contributing Circumstances:

Inattention - General	19.20%
Animal wild or domestic	10.9%
Right of way violation	10.5%
Too fast for conditions	8.30%
Followed too closely	7.20%

Note: 4 out of 5 are driver-related

Helpful numbers:

KDOT website:

www.ksdot.org

KDOT Connection (toll-free)

1-877-550-KDOT (5368)

Road/Weather info:

In Kansas, call 511,
or 1-866-511-KDOT (5368)
anywhere in the U.S.

Road/Weather website:

www.kandrive.org

District One Office

Topeka, (785) 296-3881

District Two Office

Salina, (785) 823-3754

District Three Office

Norton, (785) 877-3315

District Four Office

Chanute, (620) 431-1000

District Five Office

Hutchinson, (620) 663-3361

District Six Office

Garden City, (620) 276-3241

KDOT Transportation Information Office in Topeka - (785) 296-3585

KDOT is on

Notes

Flickr

YouTube

Facebook

- Kansas Department of Transportation
- KDOTAviation
- DriveSafeKansas

Twitter

- @KDOTHQ
- @NEKansasKDOT
- @TopekaMetroKDOT
- @WichitaKDOT
- @SEKansasKDOT
- @SWKansasKDOT
- @NWKansasKDOT
- @SCKansasKDOT
- @NCKansasKDOT
- @KCMetroKDOT