

# K-TRAN

## **KANSAS TRANSPORTATION RESEARCH AND NEW - DEVELOPMENTS PROGRAM**

The K-TRAN Program is an ongoing, cooperative and comprehensive research program addressing transportation needs of the State of Kansas utilizing academic and research resources from the Kansas Department of Transportation, Kansas State University and the University of Kansas. Projects included in the annual research program are jointly developed by professionals at KDOT, KSU and KU.

Major benefits of the program include development of a flow of high quality transportation research targeted to Kansas transportation needs; financial support to engineering students contributing to the pool of transportation professionals in Kansas; continuing education opportunities for KDOT personnel; enhanced quality of faculty, staff and graduates in the transportation area; attracted federal research resources for use in Kansas; and a much expanded but efficiently organized transportation research resource in Kansas.

Electronic full text copies of completed K-TRAN research reports and summaries may be located on the [KDOT Research Reports Catalog](#) web site.

Information about active K-TRAN projects may be found on the [TRB Research in Progress \(RiP\)](#) web site.

[K-TRAN annual solicitation guidelines](#)

[K-TRAN annual timeline](#)

[KDOT Research Organization and committee members](#)

Contacts for more information:

Rodney A. Montney, P.E., Engineer of Research and Chairman of Technical Committee (785-296-7410) Fax: 785-296-2526, [rodney@ksdot.org](mailto:rodney@ksdot.org)

Sunanda Dissanayake, Ph.D, Kansas State University (785-532-1540), [sunanda@ksu.edu](mailto:sunanda@ksu.edu)

Patricia C. Weaver, Associate Director, Transportation Research Institute, University of Kansas (785-864-2595), [weaver@ku.edu](mailto:weaver@ku.edu)

## K-TRAN ANNUAL SOLICITATION GUIDELINES

Research project statements that are submitted by annual deadline will be evaluated by K-TRAN Area Panels, and prioritized by the Research Technical Committee. The Research Program Council approves an annual program using input from the Research Technical Committee and Area Panels. The seven Area Panels that have been organized for the review and development of research ideas are:

- Planning, Administration and Computing
- Operations: Pavements, Materials, Construction and Maintenance
- Geometric Design, Drainage and Environmental
- Structural
- Traffic Operations; Driver and Pedestrian Safety
- Multimodal: Rail, Aviation, Public Transit and Freight
- Local Governments

Research Needs Day is held in October in Topeka to discuss research needs developed from the annual idea solicitation and other topics of interest to both the Area Panel members and faculty attending. This is an opportunity for faculty attending to discuss potential research topics they have and get feedback prior to preparing their research project statements (preproposals).

**Submit one copy of all research project statements using the following [format](#) before November 27<sup>th</sup>, each year to your University K-TRAN Technical Committee Coordinating Group Representative:**

University of Kansas  
Patricia C. Weaver  
Transportation Research Institute  
2160 Learned Hall  
1530 W. 15<sup>th</sup> Street  
Lawrence, Kansas 66045-7618  
[weaver@ku.edu](mailto:weaver@ku.edu)

Kansas State University  
Sunanda Dissanayake, Ph.D.  
Dept. of Civil Engineering  
2118 Fiedler Hall  
Manhattan, Kansas 66506  
[sunanda@ksu.edu](mailto:sunanda@ksu.edu)

**Dr. Dissanayake and Ms. Weaver will number the original research project statements and electronically submit them to KDOT by December 1<sup>st</sup> each year.**

## FORMAT FOR RESEARCH PROJECT STATEMENTS

Submit one copy of research project statements (pre-proposals) with no more than two, single-spaced pages containing following information to your University K-TRAN representative (Dr. Dissanayake, KSU or Dr. McEnroe, KU):

- I. RESEARCH PROJECT TITLE
- II. RESEARCH PROBLEM STATEMENT
- III. RESEARCH PROPOSED OR RESEARCH OBJECTIVES  
Include tasks to be performed
- IV. ESTIMATE OF FUNDING AND RESEARCH PERIOD  
Inclusive of indirect costs, if appropriate  
Do not provide budget -- only overall estimated costs  
Include the anticipated period of performance
- V. URGENCY AND PAYOFF POTENTIAL  
Include expected benefits expressed in dollars saved if results expected are obtained and implemented
- VI. IMPLEMENTATION STRATEGY
- VII. PROJECT PERSONNEL  
Faculty and students who might be involved with the project
- VIII. SUBMISSION INFORMATION  
Date  
Name and Title  
University address  
University telephone and Fax number  
E-mail address

**Use Standard English units in all research project statements, interim reports and final reports. Prepare the final report in Microsoft Word and submit file on CD as well as on paper.**

## GUIDELINES FOR EVALUATING RESEARCH IDEAS

Guidelines have been developed to assist the Research Technical Committee in formulating and recommending research projects for inclusion in the K-TRAN Program. These guidelines will be used in the review of research ideas for development into complete proposals for further consideration.

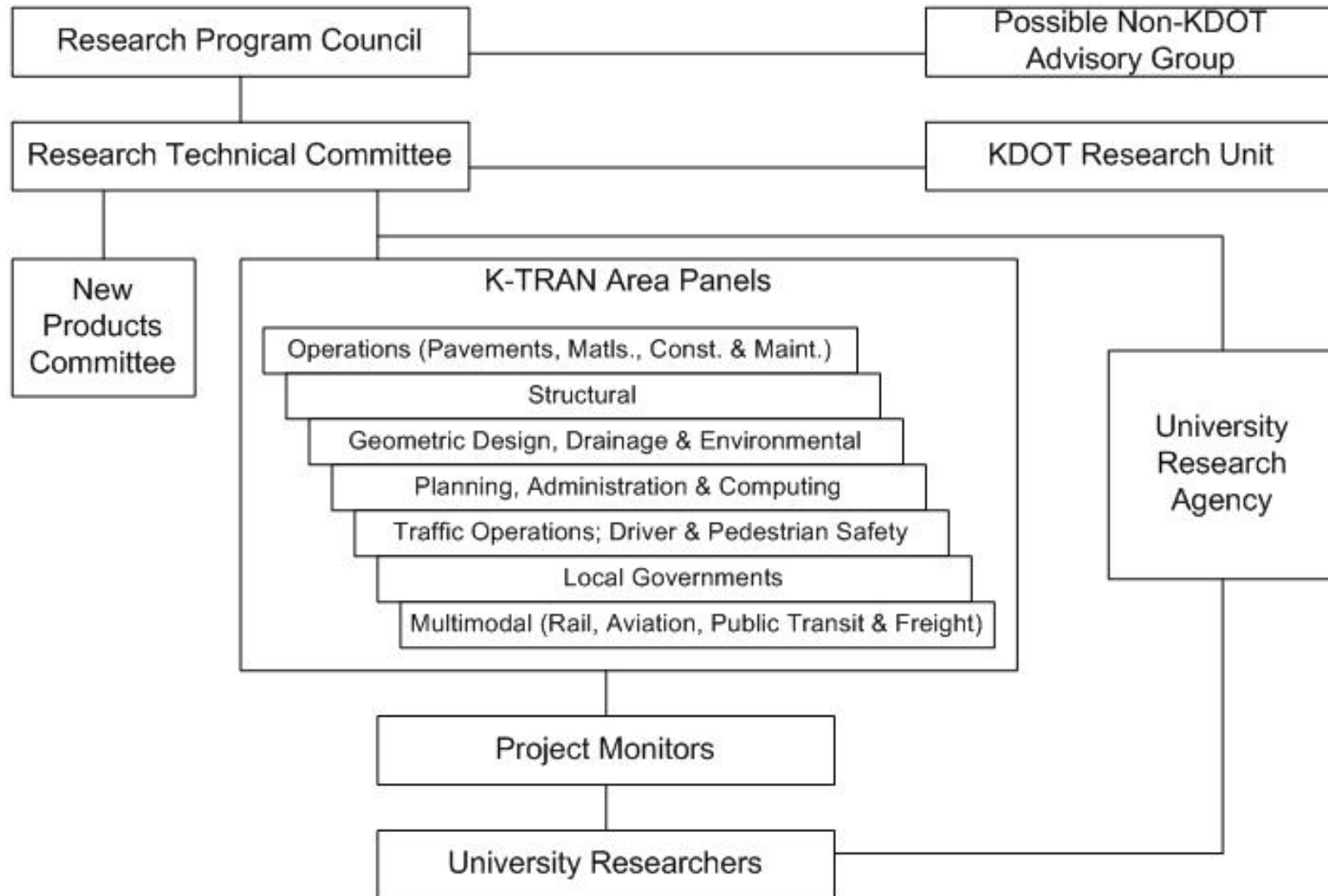
- Relevance to critical research needs of KDOT
- Projects with a high payoff potential described in dollars that can be saved if the research results envisioned result and are implemented.
- Relevance of proposed research idea to the theme of K-TRAN
- Amount of overlap of the proposed research idea with other programs or completed research idea with other programs of completed research (Proposed research should not be targeted for research topics or issues currently underway through the National Cooperative Highway Research Program National Cooperative Transit Research Program, or the Local Technology Assistance Program.)
- Duration of proposed research project. Project statements should be prepared with the most cost-effective duration considering the required workload, typical length of graduate study programs and other factors. The correct length of time shown should result in the project being completed without any cost extensions.
- Extent to which minorities and handicapped persons are involved in the research, either as participants, recipients or beneficiaries.

## K-TRAN ANNUAL TIMELINE

Solicit research ideas from staff, local government officials and industry partners	June 15 *
Deadline for submission of research ideas to Engineer of Research	Aug. 15
Research Program Council review	Sept. 1
Request for K-TRAN Research Project Statements	Nov. 1
Deadline for Research Project Statements on campus	Nov. 27
Deadline for Research Project Statements to KDOT	Dec. 1
Assign RPS to Area Panels/ Research Technical Committee (RTC) meeting	Dec. 15
Area Panel RPS evaluations completed/RTC meets to discuss and ballot RPS evaluations	Feb. 15
Research Program Council discusses and approves annual K-TRAN Program and budget	Mar. 1
Detailed Proposals Prepared for Approved Projects	Apr. 1
Agreements prepared and signed for early start projects	May 1

\*approximate dates

# KDOT Research Organization



## Research Technical Committee

### **At Large Members:**

Rodney A. Montney, Engineer of Research and Chairman of Technical Committee (296-7410) Fax: (785) 296-2526 [rodney@ksdot.org](mailto:rodney@ksdot.org)

Susan Barker, Technology Transfer Engineer and Secretary of Committee (296-7410) [SusanB@ksdot.org](mailto:SusanB@ksdot.org)

Sandra Tommer, Chief, Bureau of Construction and Maintenance (296-3576) [SandraT@ksdot.org](mailto:SandraT@ksdot.org)

Jeff Neal, Acting Chief, Bureau of Computer Services (296-3727) [JFNeal@ksdot.org](mailto:JFNeal@ksdot.org)

### **Area Panel Leaders:**

Planning, Administration and Computing: Dennis Slimmer, Chief, Bureau of Transportation Planning (296-3865), [Dennis@ksdot.org](mailto:Dennis@ksdot.org)

Operations: Pavements, Materials, Construction and Maintenance: Rick Kreider, Chief, Bureau of Materials and Research (296-3711) [RickK@ksdot.org](mailto:RickK@ksdot.org)

Geometric Design, Drainage and Environmental: Jim Brewer, Engineering Manager, State Road Office (296-3901) [Jbrewer@ksdot.org](mailto:Jbrewer@ksdot.org)

Structural: Loren Risch, Engineering Manager-State Bridge Office (296-3761) [loren@ksdot.org](mailto:loren@ksdot.org)

Traffic Operations; Driver and Pedestrian Safety: Mike Floberg, Chief, Bureau of Transportation Safety and Technology (296-7431) [Floberg@ksdot.org](mailto:Floberg@ksdot.org)

Multimodal: Rail, Aviation, Public Transit and Freight: Joel Skelley, State Multimodal Planner, Bureau of Transportation Planning (296-4209) [joelsk@ksdot.org](mailto:joelsk@ksdot.org)

Local Governments: Ron Seitz, Chief, Bureau of Local Projects (296-3861) [Seitz@ksdot.org](mailto:Seitz@ksdot.org)

### **University Designees:**

Patricia Weaver, Transportation Research Institute, University of Kansas, (785-864-2595), [weaver@ku.edu](mailto:weaver@ku.edu)

Thomas Mulinazzi, Ph.D., University of Kansas (864-2928), [tomm@ku.edu](mailto:tomm@ku.edu)

Sunanda Dissanayake, PH.D, Kansas State University (532-1540), [sunanda@ksu.edu](mailto:sunanda@ksu.edu)

Mustaque Hossain, Ph.D., Kansas State University (532-1576), [mustak@ksu.edu](mailto:mustak@ksu.edu)

### **FHWA Representative:**

Steve Foust, FHWA Kansas Division (785-271-2448 Ext. 221) [steve.foust@fhwa.dot.gov](mailto:steve.foust@fhwa.dot.gov)

## **K-TRAN Area Panel Members**

### **Planning, Administration and Computing:**

**KDOT:** Dennis Slimmer, Chief, Bureau of Transportation Planning (296-3865),  
[Dennis@ksdot.org](mailto:Dennis@ksdot.org)

**FHWA:** Steve Foust, FHWA-Kansas Division, 6111 SW 29 Street, Suite 100, Topeka, Kansas 66614-4271, (271-2448 Ext. 221) [steve.foust@fhwa.dot.gov](mailto:steve.foust@fhwa.dot.gov)

**KSU:** Bobb Stokes, Professor, Kansas State University, Department of Civil Engineering, 2118 Fiedler Hall, Manhattan, Kansas 66506, (532-1595) [drbobb@ksu.edu](mailto:drbobb@ksu.edu)

**KU:** Patricia Weaver, Associate Director KUTC, 2160 Learned Hall, 1530 West 15<sup>th</sup> Street, Lawrence, Kansas 66045-7618 (864-2595) [weaver@ku.edu](mailto:weaver@ku.edu)

### **Operations: Pavements, Materials, Construction and Maintenance:**

**KDOT:** Rick Kreider, Chief, Bureau of Materials and Research, KDOT, (296-3711) [RickK@ksdot.org](mailto:RickK@ksdot.org) and Roy Rissky, Chief, Bureau of Construction and Maintenance, KDOT, (296-3576) [royr@ksdot.org](mailto:royr@ksdot.org)

**FHWA:** Tom Deddens, Pavement Engineer, (271-2448 Ext. 212) [tom.deddens@fhwa.dot.gov](mailto:tom.deddens@fhwa.dot.gov) and Doug Daugherty, Construction Engineer, (271-2448 Ext. 215), both FHWA-Kansas Division, 6111 SW 29<sup>th</sup> Street, Suite 100, Topeka, Kansas 66614-4271

**KSU:** Mustaque Hossain, Professor, Kansas State University, Department of Civil Engineering, 2118 Fiedler Hall, Manhattan, Kansas 66506, (532-1576) [mustak@ksu.edu](mailto:mustak@ksu.edu)

**KU:** Robert Parsons, Assistant Professor, University of Kansas, CEAE Department, 2150 Learned Hall, 1530 West 15<sup>th</sup> Street, Lawrence, Kansas 66045-7609 (864-2946) [rparsons@ku.edu](mailto:rparsons@ku.edu)

### **Traffic Operations; Driver and Pedestrian Safety:**

**KDOT:** Mike Floberg, Chief, Bureau of Transportation Safety and Technology (296-7431) [Floberg@ksdot.org](mailto:Floberg@ksdot.org)

**FHWA:** David LaRoche, Program Development/Transportation Engineer, FHWA-Kansas Division, 6111 SW 29<sup>th</sup> Street, Suite 100, Topeka, Kansas 66614-4271, (271-2448 Ext. 210) [david.laroche@fhwa.dot.gov](mailto:david.laroche@fhwa.dot.gov)

**KSU:** Sunanda Dissanayake, Assistant Professor, Kansas State University, Department of Civil Engineering, 2118 Fiedler Hall, Manhattan, Kansas 66506, (532-1540) [sunanda@ksu.edu](mailto:sunanda@ksu.edu)

**KU:** Mehrdad Givechi, Program Assistant / Research Engineer, KUTC, 2160 Learned Hall, 1530 West 15<sup>th</sup> Street, Lawrence, Kansas 66045-7609 (864-2593) [mgivechi@ku.edu](mailto:mgivechi@ku.edu)

### **Structural:**

**KDOT:** Loren Risch, Engineering Manager, State Bridge Office, Bureau of Design, KDOT, (296-3761) [loren@ksdot.org](mailto:loren@ksdot.org)

**FHWA:** Steve Toillion, Structural Engineer, FHWA-Kansas Division, 6111 SW 29<sup>th</sup> Street, Suite 100, Topeka, Kansas 66614-4271, (271-2448 Ext. 213) [steven.toillion@fhwa.dot.gov](mailto:steven.toillion@fhwa.dot.gov)

**KSU:** Asad Asmaeily, Assistant Professor, Kansas State University, Department of Civil Engineering, 2118 Fiedler Hall, Manhattan, Kansas 66506, (532-6063) [asad@ksu.edu](mailto:asad@ksu.edu)

**KU:** JoAnn Browning, Assistant Professor, University of Kansas, CEAE Department, 2150 Learned Hall, 1530 West 15<sup>th</sup> Street, Lawrence, Kansas 66045-7609 (864-3723) [jobrown@ku.edu](mailto:jobrown@ku.edu)

### **Geometric Design, Drainage and Environmental:**

**KDOT:** Jim Brewer, Engineering Manager, State Road Office, Bureau of Design, KDOT, (296-3901) [Jbrewer@ksdot.org](mailto:Jbrewer@ksdot.org)

**FHWA:** John Knowles, Transportation Engineer, FHWA-Kansas Division, 6111 SW 29<sup>th</sup> Street, Suite 100, Topeka, Kansas 66614-4271, (271-2448 Ext. 211) [john.knowles@fhwa.dot.gov](mailto:john.knowles@fhwa.dot.gov)

**KSU:** Steve Starrett, Associate Professor, Kansas State University, Department of Civil Engineering, 2118 Fiedler Hall, Manhattan, Kansas 66506, (532-1583) [steveks@ksu.edu](mailto:steveks@ksu.edu)

**KU:** Dave Parr, Professor, University of Kansas, CEAE Department, 2150 Learned Hall, 1530 West 15<sup>th</sup> Street, Lawrence, Kansas 66045-7609, (864-3808) [parr@ku.edu](mailto:parr@ku.edu)

### **Multimodal: Rail, Aviation, Public Transit, Freight:**

**KDOT:** Joel Skelley, State Multimodal Planner, Bureau of Transportation Planning, KDOT, (296-4209) [joelsk@ksdot.org](mailto:joelsk@ksdot.org)

**FHWA:** Steve Foust, Assistant Programs Engineer, FHWA-Kansas Division, 6111 SW 29<sup>th</sup> Street, Suite 100, Topeka, Kansas 66614-4271, (785-271-2448 Ext. 221) [steve.foust@fhwa.dot.gov](mailto:steve.foust@fhwa.dot.gov)

**KSU:** Michael W. Babcock, Professor, Kansas State University, Department of Economics, 317 Waters Hall, Manhattan, Kansas 66506, (532-4571) [mwb@ksu.edu](mailto:mwb@ksu.edu)

**KU:** Patricia Weaver, Associate Director KUTC, 2160 Learned Hall, 1530 West 15<sup>th</sup> Street, Lawrence, Kansas 66045-7609 (864-2595) [weaver@ku.edu](mailto:weaver@ku.edu)

**Local Governments:**

**KDOT:** Ron Seitz, Chief, Bureau of Local Projects, KDOT, (296-3861) [Seitz@ksdot.org](mailto:Seitz@ksdot.org)

**FHWA:** James “Rusty” Simerl, Engineering Services Team Leader, FHWA-Kansas Division, 6111 SW 29<sup>th</sup> Street, Suite 100, Topeka, Kansas 66614-4271, (271-2448 Ext. 206) [james.simerl@fhwa.dot.gov](mailto:james.simerl@fhwa.dot.gov)

**KSU:** Sunanda Dissanayake, Assistant Professor, Kansas State University, Department of Civil Engineering, 2118 Fiedler Hall, Manhattan, Kansas 66506, (532-1540) [sunanda@ksu.edu](mailto:sunanda@ksu.edu)

**KU:** Tom Mulinazzi, Professor and Chair, University of Kansas, CEAE Department, 2150 Learned Hall, 1530 West 15<sup>th</sup> Street, Lawrence, Kansas 66045-7609, (864-2928) [tomm@ku.edu](mailto:tomm@ku.edu)