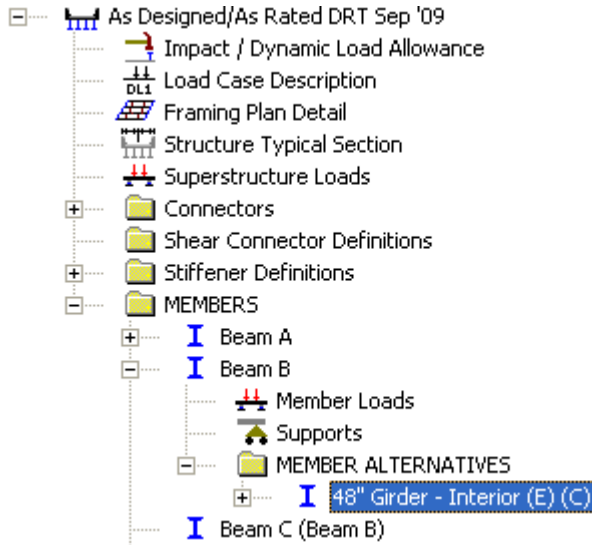


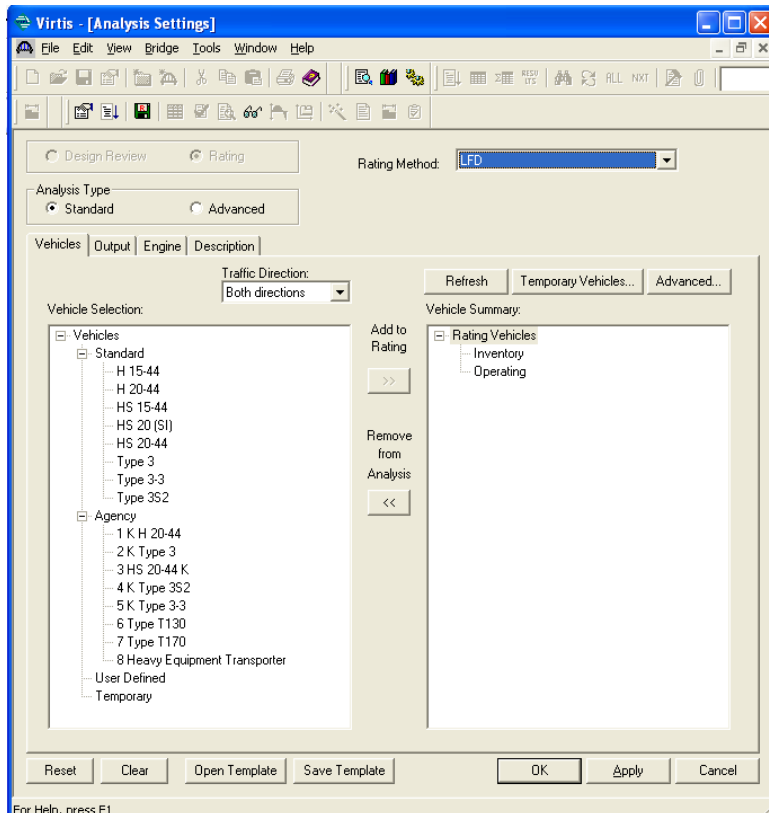
LFD Rating Review

Highlight the Member Alternative you want to load rate in LFD



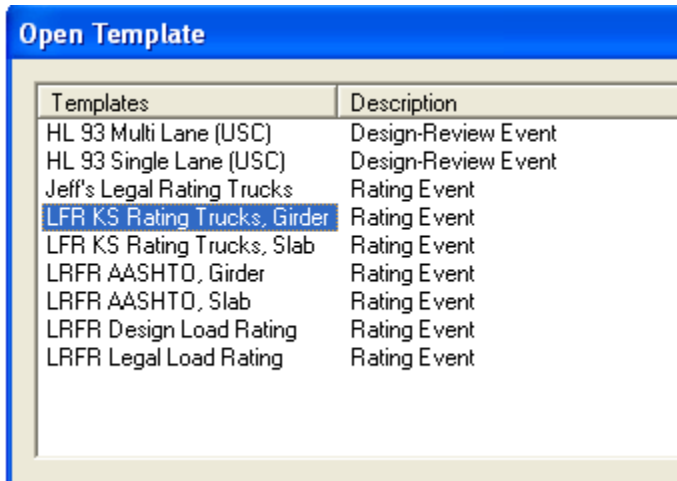
From the tool bar, select “View Analysis Setting” and you should see the screen below

- Be sure you have gone through the KDOT Setup Tutorial so you have the Agency trucks shown with the correct settings.

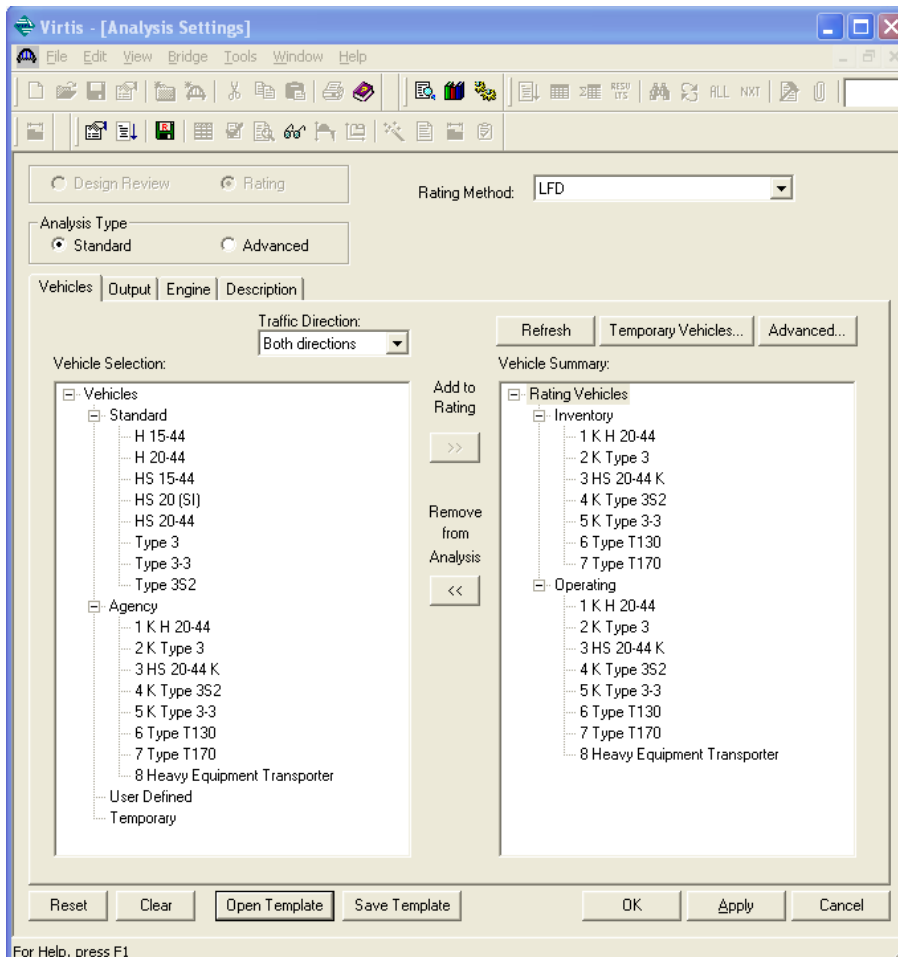


For Help, press F1

Selecting "Open Template" near the bottom left will open this screen
 For Girder line structures select the template as shown for girders
 If you have a RC Slab type structure select the template below for Slabs



Now your screen should look like this, select OK



From the tool bar, select Analyze
 You will get an analysis in progress window
 When you see Analysis completed, select OK

From the tool bar, select the “View Analysis Reports”
 You will see the following table

Report Type: Rating Results Summary
 Lane/Impact Loading Type: As Requested Detailed
 Display Format: Multiple rating levels per row

Live Load	Live Load Type	Rating Method	Inventory Load Rating (Ton)	Operating Load Rating (Ton)	Inventory Rating Factor	Operating Rating Factor	Inventory Location (ft)	Inventory Location Span-(%)	Operating Location (ft)	Operating Location Span-(%)
1 K H 20-44	Axle Load	LFD	39.47	65.92	1.974	3.296	217.50	3 - (50.0)	217.50	3 - (50.0)
2 K Type 3	Axle Load	LFD	43.08	71.95	1.723	2.878	217.50	3 - (50.0)	217.50	3 - (50.0)
3 HS 20-44 K	Axle Load	LFD	44.92	75.02	1.248	2.084	217.50	3 - (50.0)	217.50	3 - (50.0)
4 K Type 3S2	Axle Load	LFD	52.34	87.40	1.454	2.428	217.50	3 - (50.0)	217.50	3 - (50.0)
5 K Type 3-3	Axle Load	LFD	54.84	94.04	1.371	2.351	161.00	2 - (100.0)	274.00	3 - (100.0)
6 Type T130	Axle Load	LFD	80.78	140.76	1.243	2.165	161.00	2 - (100.0)	274.00	3 - (100.0)
7 Type T170	Axle Load	LFD	94.46	165.27	1.111	1.944	161.00	2 - (100.0)	274.00	3 - (100.0)
8 Heavy Equipment Transporter	Axle Load	LFD		113.93		1.036			161.00	2 - (100.0)

This completes a LFD Rating Review