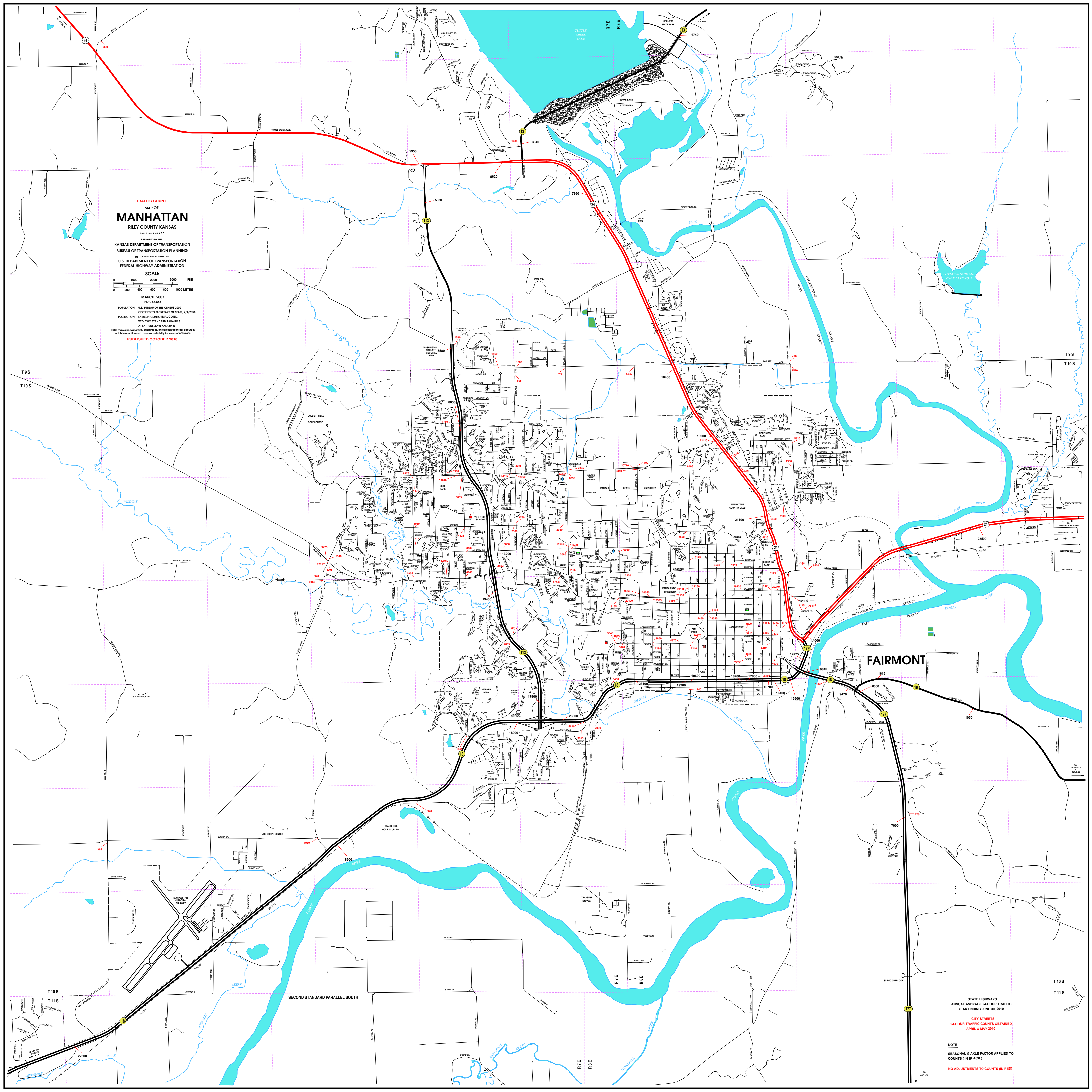


TRAFFIC COUNT
MAP OF
MANHATTAN
RILEY COUNTY KANSAS

PREPARED BY THE
KANSAS DEPARTMENT OF TRANSPORTATION
BUREAU OF TRANSPORTATION PLANNING
IN COOPERATION WITH THE
U.S. DEPARTMENT OF TRANSPORTATION
FEDERAL HIGHWAY ADMINISTRATION

SCALE
0 1000 2000 3000 FEET
0 200 400 600 800 1000 METERS

MARCH, 2007
POP. 48,668
POPULATION - U.S. BUREAU OF THE CENSUS 2000
CENSUS TO SECRETARY OF STATE, 1/1/2004
PROJECTION - LAMBERT CONFORMAL CONIC
WITH TWO STANDARD PARALLELS
AT LATITUDE 37°N AND 37°N
EDOT makes no warranty, guarantee, or representation for accuracy
of this information and assumes no liability for errors or omissions.
PUBLISHED OCTOBER 2010



FAIRMONT

STATE HIGHWAYS
ANNUAL AVERAGE 24-HOUR TRAFFIC
YEAR ENDING JUNE 30, 2010

CITY STREETS
24-HOUR TRAFFIC COUNTS OBTAINED
APRIL & MAY 2010

NOTE
SEASONAL & AXLE FACTOR APPLIED TO
COUNTS (IN BLACK)
NO ADJUSTMENTS TO COUNTS (IN RED)