

Southeast District Office
411 W. Fourteenth
Chanute, KS 66720-2894



phone: 620-902-6400
fax: 620-431-4406
www.ksdot.org

Julie Lorenz, Secretary

Laura Kelly, Governor

IMMEDIATE RELEASE

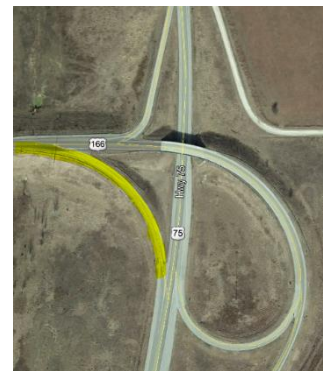
April 21, 2020

Contact: Priscilla Petersen, (620) 902-6433; priscilla.petersen@ks.gov

KDOT to close ramp on U.S. 166 bridge replacement project

The Kansas Department of Transportation (KDOT) plans to close the ramp from eastbound U.S. 166 to southbound U.S. 75 on Tuesday, April 21, weather permitting.

The ramp will be reconstructed as part of the project to replace the South Kansas & Oklahoma (SKOL) overpass west of the U.S. 166/U.S. 75 junction. KDOT expects the ramp to remain closed until late summer, when the new bridge will be completed. One-lane traffic directed by signals is being carried through the work zone on U.S. 166.



The ramp from southbound U.S. 75 to westbound U.S. 166, previously closed for reconstruction, will be open to traffic.

Persons with questions may contact Darrin Petrowsky, (620) 577-7312, or Priscilla Petersen, (620) 902-6433.

Drive safely and always wear your seat belt.

#####

For information about obtaining an alternative format, contact the KDOT Office of Public Affairs, 700 SW Harrison St., 2nd Floor West, Topeka, KS 66603-3754 or phone 785-296-3585 Voice/Hearing Impaired – 711.

Click below to connect to KDOT's Social Networks:

