

Southeast District Office
411 W. Fourteenth
Chanute, KS 66720-2894



phone: 620-431-1000
fax: 620-431-4406
www.ksdot.org

Julie Lorenz, Secretary

Laura Kelly, Governor

IMMEDIATE RELEASE

Oct. 18, 2019

For more information: Priscilla Petersen, (620) 902-6433; priscilla.petersen@ks.gov

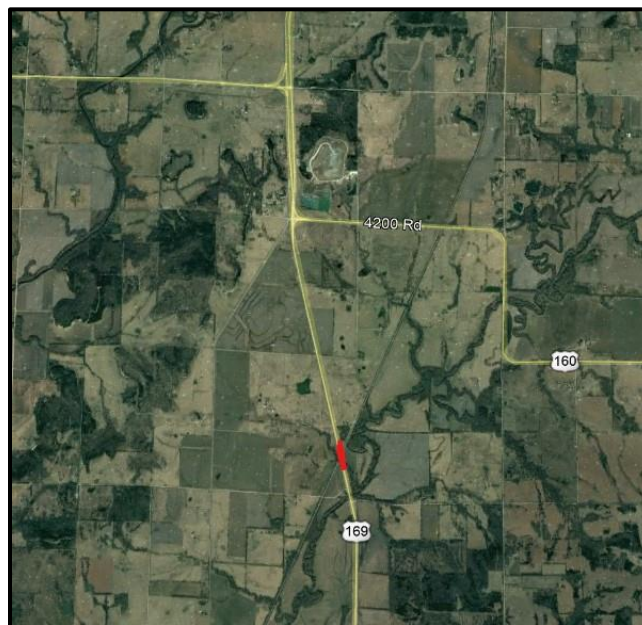
Pavement repairs to begin at U.S. 169 rail crossing

The Kansas Department of Transportation (KDOT) expects to begin pavement repairs on the truck stopping lanes at a U.S. 169 railroad crossing the week of Oct. 21.

The work will take place at the U.S. 169 South Kansas & Oklahoma (SKOL) crossing south of the U.S. 169/U.S. 160 junction. Cornejo & Sons, LLC, of Wichita is the project contractor.

Flaggers will direct traffic through the work zone, with minimal delays. The repairs should be completed by early November, weather permitting.

Persons with questions may contact Darrin Petrowsky at KDOT-Independence, (620) 577-7312, or Priscilla Petersen at KDOT-Chanute, (620) 902-6433.



Location of U.S. 169 pavement repairs shown in red

#####

For information about obtaining an alternative format, contact the KDOT Office of Public Affairs,
700 SW Harrison St., 2nd Floor West, Topeka, KS 66603-3754 or phone 785-296-3585 Voice/Hearing Impaired – 711.

Click below to connect to KDOT's Social Networks:

