

Southeast District Office
411 W. Fourteenth
Chanute, KS 66720-2894



phone: 620-431-1000
fax: 620-431-4406
www.ksdot.org

Julie Lorenz, Secretary

Laura Kelly, Governor

IMMEDIATE RELEASE

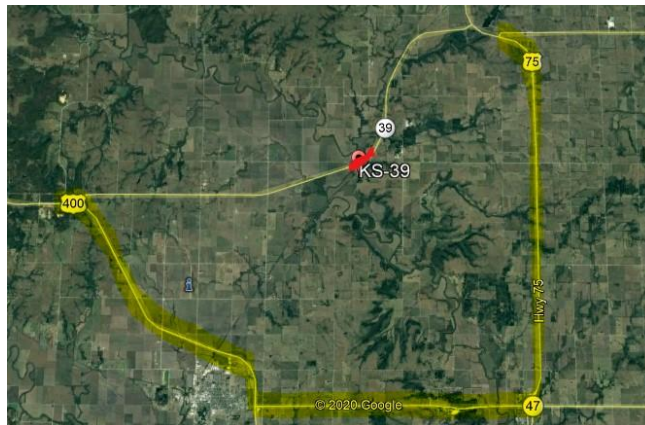
Dec. 4, 2020

Contact: Priscilla Petersen, (620) 902-6433; priscilla.petersen@ks.gov

K-39 to close for railroad crossing repairs Dec. 16-17

On Wednesday and Thursday, Dec. 16-17, UP Railroad plans to close and repair the crossing on K-39 at Benedict.

K-39 will be closed to through traffic between U.S. 400 and U.S. 75. Traffic will follow a signed detour on U.S. 75, K-47, and U.S. 400. Persons with questions may contact Marcus Leck, (620) 577-7313, or Priscilla Petersen, (620) 902-6433.



K-39 closure shown in red; detour route in yellow

#####

This information can be made available in alternative accessible formats upon request.

For information about obtaining an alternative format, contact the KDOT Division of Communications, 700 SW Harrison St., 2nd Fl West, Topeka, KS 66603-3754 or phone 785-296-3585 (Voice)/Hearing Impaired – 711.

Click below to connect to KDOT's Social Networks:

