

Southeast District Office  
411 W. Fourteenth  
Chanute, KS 66720-2894



phone: 620-902-6400  
fax: 620-431-4406  
[www.ksdot.org](http://www.ksdot.org)

Julie Lorenz, Secretary

Laura Kelly, Governor

## IMMEDIATE RELEASE

June 3, 2020

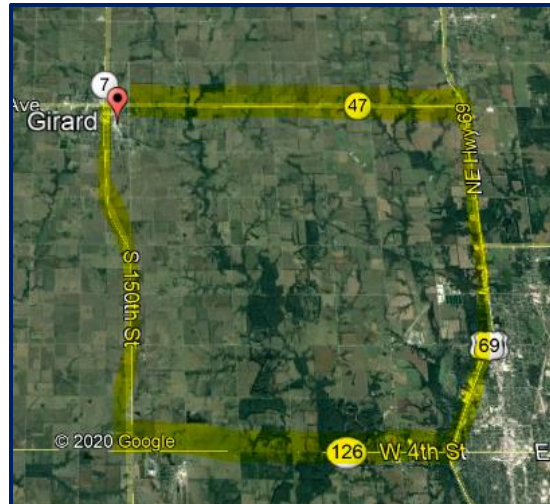
**Contact:** Priscilla Petersen, (620) 902-6433; [priscilla.petersen@ks.gov](mailto:priscilla.petersen@ks.gov)

### K-47 rail crossing to close for repairs

The BNSF Railway plans to close and repair its crossing on K-47 at Girard starting Thursday, June 4, until Monday, June 8, weather permitting.

Traffic will follow the signed detour on K-7, K-126, U.S. 69 and K-47 during the closure. Since a width restriction of 10 feet is in effect on a section of K-126, trucks with wide loads should use U.S. 400 instead.

Persons with questions may contact Kansas Department of Transportation Superintendent Wayne Nelson, (620) 308-7622, or Public Affairs Manager Priscilla Petersen, (620) 902-6433.



**BNSF closure shown in red; detour in yellow.**

#####

This information can be made available in alternative accessible formats upon request.

For information about obtaining an alternative format, contact the KDOT Division of Communications, 700 SW Harrison St., 2<sup>nd</sup> Fl West, Topeka, KS 66603-3754 or phone 785-296-3585 (Voice)/Hearing Impaired – 711.

Click below to connect to KDOT's Social Networks:

