

Southeast District Office  
411 W. Fourteenth  
Chanute, KS 66720-2894



phone: 620-902-6400  
fax: 620-431-4406  
[www.ksdot.org](http://www.ksdot.org)

Julie Lorenz, Secretary

Laura Kelly, Governor

## **IMMEDIATE RELEASE**

June 5, 2020

**Contact:** Priscilla Petersen, (620) 902-6433; [priscilla.petersen@ks.gov](mailto:priscilla.petersen@ks.gov)

### **Survey for U.S. 59 overpass begins this month**

The Kansas Department of Transportation (KDOT) plans to begin a field survey at the railroad overpass on U.S. 59 north of Parsons on Monday, June 8.

The overpass is located approximately one mile north of U.S. 400.

The field survey covers approximately one mile on the existing overpass alignment. Survey crew members will gather information for the detailed design of a proposed improvement to replace the overpass.

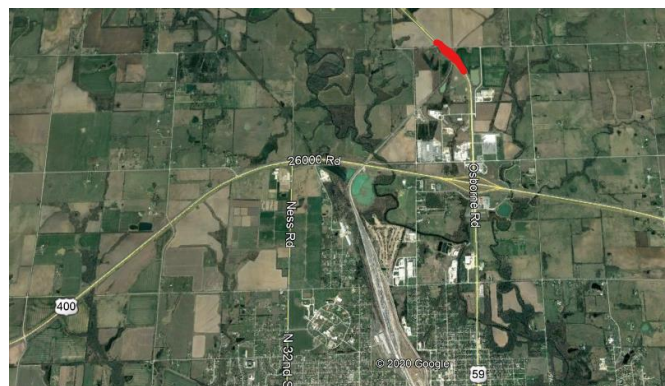
KDOT expects the survey work to take three to four weeks to complete. Activities include the use of survey instruments on the ground to determine locations of existing features within the corridor.

A member of the survey crew will contact property owners or tenants for permission to enter private property.

John Lilak of Bartlett & West will manage this survey for KDOT.

Persons with questions may contact KDOT Public Affairs Manager Priscilla Petersen, (620) 902-6433.

#### **Survey area in red**



#####

This information can be made available in alternative accessible formats upon request.

For information about obtaining an alternative format, contact the KDOT Division of Communications, 700 SW Harrison St., 2<sup>nd</sup> Fl West, Topeka, KS 66603-3754 or phone 785-296-3585 (Voice)/Hearing Impaired – 711.

Click below to connect to KDOT's Social Networks:

