

Northeast District Office  
121 S.W. 21st Street  
Topeka, KS 66612-1429



phone: 785-296-3881  
fax: 785-296-3720  
[www.ksdot.org](http://www.ksdot.org)

Mike King, Secretary

Sam Brownback, Governor

## FOR IMMEDIATE RELEASE

**June 7, 2015**

News Contact: Kimberly Qualls, (785) 640-9340 or [kqualls@ksdot.org](mailto:kqualls@ksdot.org)  
Jerry Haug, (785) 456-2353 or [jerryh@ksdot.org](mailto:jerryh@ksdot.org)



*A current view of existing K-63 Bridge over Straight Creek.*

# K-63 Straight Creek Bridge Replacement Project to Begin in Pottawatomie County – **UPDATE!**

On **Monday, June 15, June 29**, a replacement project will begin on the K-63 Bridge over Straight Creek located south of Havensville (2.09-miles north of the K-16 junction in Pottawatomie County). Project work includes removal of the existing 50-foot reinforced fixed arch bridge (with 28-foot wide roadway) with a 56-foot reinforced concrete rigid frame bridge (with 36-foot wide

roadway). Work will take place during daylight hours, Monday through Friday, with some occasional Saturday work.

Beginning on **Monday, June 15, June 29**, weather permitting, crews will set traffic control and late that same day, northbound and southbound K-63 over the Straight Creek bridge will be closed to all traffic throughout the project duration.

A marked detour will be provided (see detour map below). K-63 traffic will detour via K-16 east to K-62, then north on K-62, then west to K-9 to K-63 or via K-9 east to K-62, south on K-62 to K-16, then east on K-16 to K-63. Traffic will be directed around the project work zone via signage and barricades. Drivers should expect minor delays and must use alternate routes throughout the project duration.

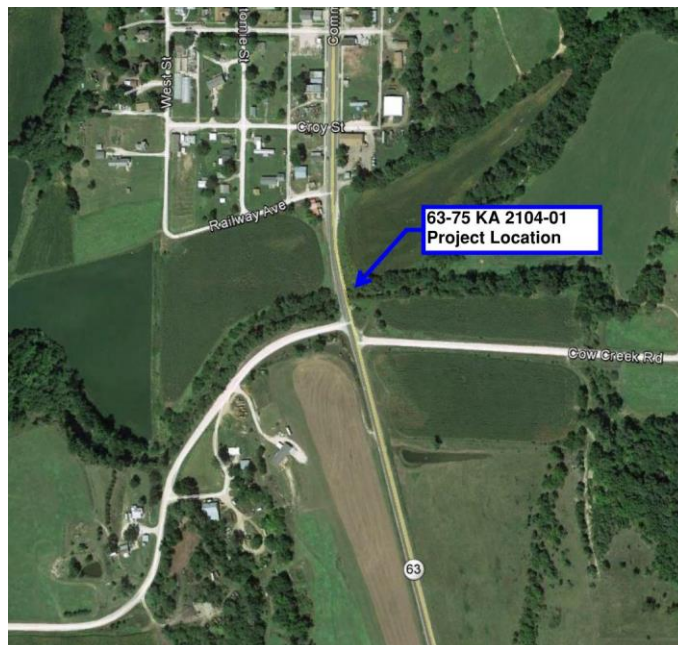
The Kansas Department of Transportation urges all motorists to be alert, obey the warning signs, and “Give ‘Em a Brake!” when approaching and driving through the project work zone.

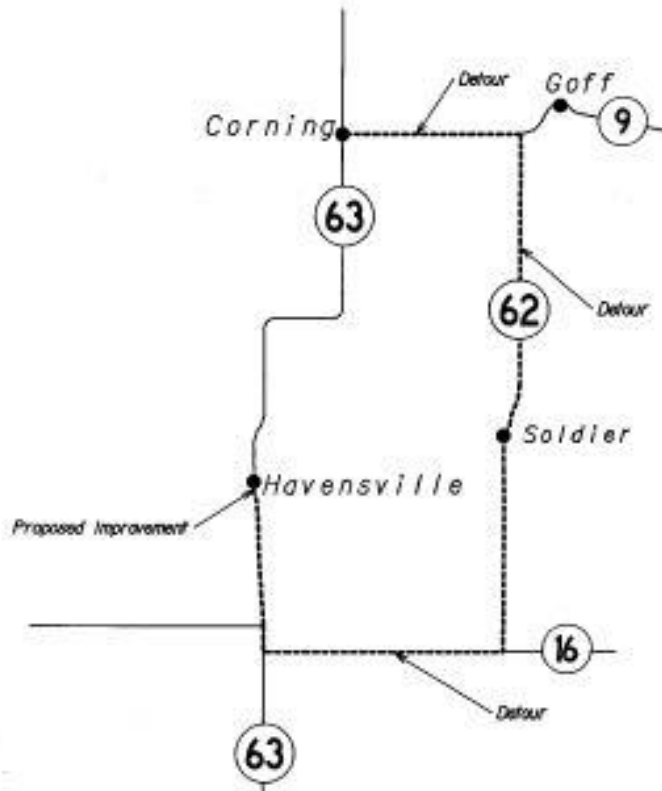
Bridges Inc. (Newton, KS) is the primary contractor on this bridge replacement project with a total contract cost of \$929,566. **The scheduled completion date for the bridge replacement project is late November 2015, weather permitting.**

This project is funded by T-WORKS, the transportation program passed by the Kansas Legislature in May 2010. Find out more about this and other T-WORKS projects at:

<http://kdotapp.ksdot.org/TWorks/>.

For more information on this bridge replacement project, please contact Kimberly Qualls, Northeast Kansas Public Affairs Manager, at (785) 640-9340, or Jerry Haug, Wamego Construction Engineer, at (785) 456-2353. (KDOT Project #63-75 KA-2104-01)





*Detour Sketch (Not to scale)*

*Traffic shall be detoured on other state routes as shown above. The detour shall be signed by the contractor and the detour signing shall be maintained by the contractor.*

###

This information is available in alternative accessible formats. To obtain an alternative format, contact KDOT Office of Public Affairs, Eisenhower Building, 700 SW Harrison, 2nd Floor West, Topeka, Kan., 66603-3754, or (785) 296-3585 (Voice)/Hearing Impaired - 711.

Click below to connect to KDOT's Social Networks:

