

Northeast District Office
121 S.W. 21st Street
Topeka, KS 66612-1429



phone: 785-296-3881
fax: 785-296-3720
www.ksdot.org

Mike King, Secretary

Sam Brownback, Governor

FOR IMMEDIATE RELEASE

May 18, 2012

News Contact: Kimberly Qualls, (785) 640-9340 or kqualls@ksdot.org

Mary Files, (785) 296-2291 or maryf@ksdot.org

Two K-4 Bridge Repair Projects to Begin in Jefferson & Shawnee Counties

Weather permitting, on **Tuesday, May 29**, a repair and resurfacing project will begin on the Muddy Creek and Little Muddy Creek bridges on K-4 in Jefferson and Shawnee Counties. Project work includes: milling away 3/4" of existing bridge pavement, patching bridge deck, followed by placement of a 1.5" silica fume overlay on the bridge deck. Work will take place during daylight hours from 7:00 a.m. to 7:00 p.m., Monday through Friday, with some occasional Saturday work.

Beginning **early morning on Tuesday, May 29**, eastbound and westbound K-4 over both the Little Muddy Creek and Muddy Creek bridges will be reduced to one lane of traffic for both directions over the individual bridges only. Traffic will be directed, 24/7 round the clock, across both bridges by traffic signals located at either end of each bridge. There will also be two additional traffic signals located at the K-4 Little Muddy Creek Bridge to help direct local traffic entering from the adjacent street network.

NOTE: Eastbound and westbound access from 37th Street to K-4 on the west side will be closed throughout the project duration. (See aerial maps below for traffic impact specifics.)

There will be a posted speed limit of 50 mph throughout the entire project work zone. There will be a 12' lane width restriction across both bridges. Advance message boards will alert drivers to the lane closure. Drivers should expect major delays during peak travel times and are encouraged to use alternate routes, if possible. Updated

traffic information for this bridge repair and resurfacing project can be viewed online at:
www.ksdot.org/topekametro/laneclose.asp.

PCiRoads LLC (St. Michael, MN) is the primary contractor on this bridge repair and resurfacing project with a total contract cost of \$254,980. **The scheduled completion date for the bridge repair and resurfacing project is early August 2012, weather permitting.**

This project is funded by T-WORKS, the transportation program passed by the Kansas Legislature in May 2010. Find out more about this and other T-WORKS projects at: <http://kdotapp.ksdot.org/TWorks/>.

The Kansas Department of Transportation urges all motorists to be alert, obey the warning signs, and "Give 'Em a Brake!" when approaching and driving through the project work zone. For more information on this bridge repair project, please contact Kimberly Qualls, Northeast Kansas Public Affairs Manager, at (785) 640-9340, or Mary Files, Construction Manager at (785) 296-2291. *(KDOT Project #4-44 KA 2253-01)*

###

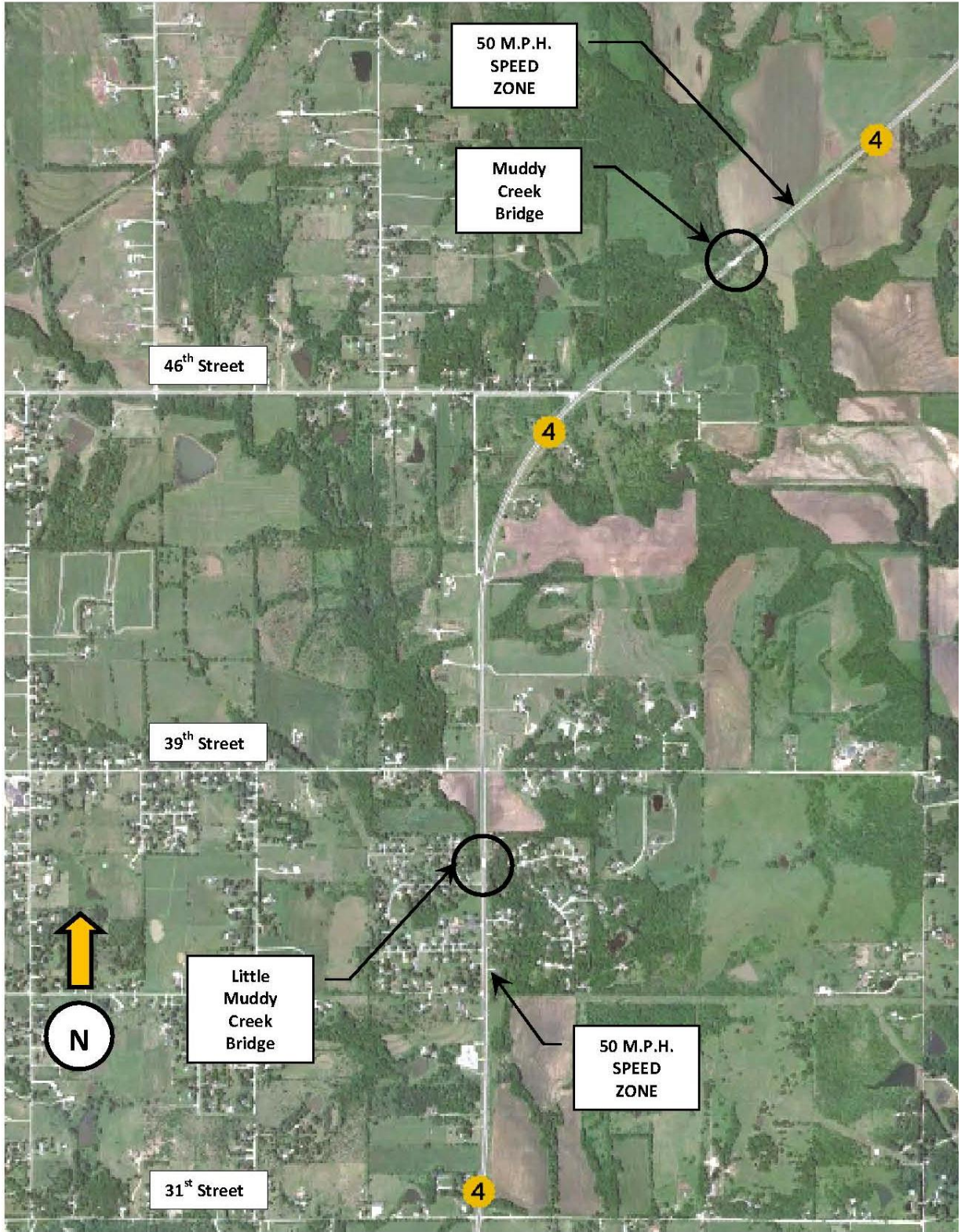
This information is available in alternative accessible formats. To obtain an alternative format, contact KDOT Transportation Information, Eisenhower Building, 700 SW Harrison, 2nd Floor West, Topeka, Kan., 66603-3754, or (785) 296-3585 (Voice)/Hearing Impaired - 711.

Click below to connect to NE Kansas KDOT's Social Networks:



K-4 Bridge Repair Projects - Area Map

K004 44 KA 2253-01



K-4 Bridge Repair Projects

K004 44 KA 2253-01

