

Eisenhower State Office Building
700 SW Harrison
Topeka, KS 66603



phone: 785-296-3585
fax: 785-296-0287
www.ksdot.org

Richard Carlson, Secretary

Sam Brownback, Governor

IMMEDIATE RELEASE

June 9, 2017

For more information:

Kim Stich
785.296.3585
KDOT.Media@ks.gov

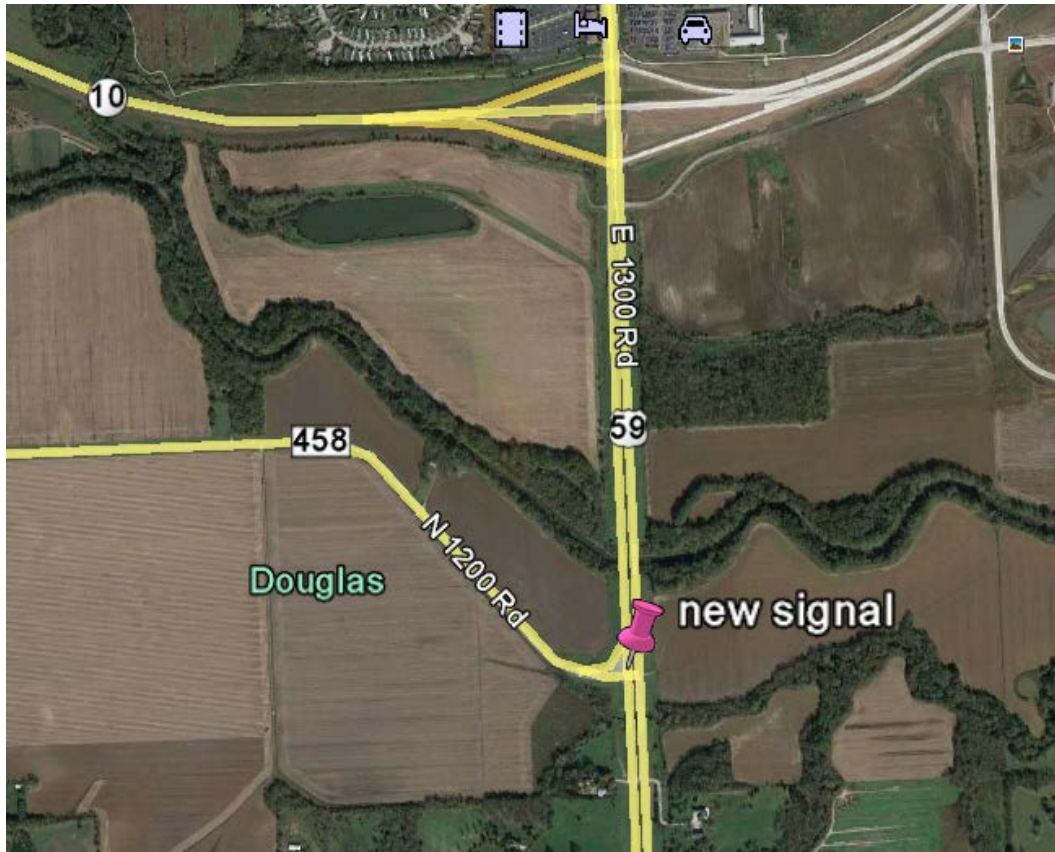
Traffic signals installed at U.S. 59/County Road 458

Work will begin on Monday, June 12, to install new traffic signals at the U.S. 59/County Road 458 intersection just south of Lawrence, according to the Kansas Department of Transportation.

Traffic will be flagged through the work zone and motorists should expect delays of up to 10 minutes when work is taking place during daylight hours, from Monday to Friday. The shoulders along U.S. 59 in the work zone will also be closed to traffic. This project area located about $\frac{3}{4}$ -mile south of the K-10/Iowa Street intersection.

Weather permitting, the work will be done in late July. J. Warren Co., Inc., of Topeka, is the contractor on the \$208,000 project.

Motorists are asked to use extra caution in the work zone area. A graphic of the project's location is below.



###

This information can be made available in alternative accessible formats upon request. For information about obtaining an alternative format, contact the Office of Public Affairs, 700 SW Harrison St., 2nd Fl West, Topeka, KS 66603-3754 or phone 785-296-3585 (Voice)/Hearing Impaired – 711.

Click below to connect to KDOT's Social Networks:



