

- LEGEND**
- CORPORATE CITY LIMITS
  - LAND SECTION LINE
  - DIVIDED HIGHWAY
  - STATE HIGHWAY
  - STREET OR PUBLIC ROAD
  - RAILROAD
  - INTERSTATE NUMBERED ROUTE
  - U.S. NUMBERED ROUTE
  - STATE NUMBERED ROUTE
  - SCHOOL
  - POST OFFICE
  - HOSPITAL
  - KDOT OFFICE
  - CITY HALL
  - SPORTS COMPLEX
  - MUSEUM
  - COUNTY COURT HOUSE
  - CUL-DE-SAC
  - LOW WATER CROSSING



CITY OF  
**SOUTH HAVEN**  
SUMNER COUNTY, KANSAS

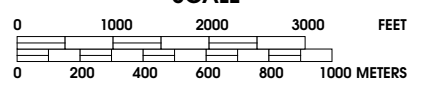
R 1 W T 34 S T 35 S

PREPARED BY THE 4

KANSAS DEPARTMENT OF TRANSPORTATION  
BUREAU OF TRANSPORTATION PLANNING

IN COOPERATION WITH THE  
U.S. DEPARTMENT OF TRANSPORTATION  
FEDERAL HIGHWAY ADMINISTRATION

**SCALE**



MARCH, 2004  
POP. 385

POPULATION - U.S. BUREAU OF THE CENSUS 2000  
CERTIFIED TO SECRETARY OF STATE, 7/1/2003

PROJECTION - LAMBERT CONFORMAL CONIC  
KANSAS COORDINATE SYSTEM, NORTH ZONE

SOURCE - 7.5' U.S.G.S. QUADRANGLE (1:24,000 SCALE)  
KDOT makes no warranties, guarantees, or representations for accuracy  
of this information and assumes no liability for errors or omissions.